



PROFICIENT.  
Price Book  
September 2020



## High Performance Sound Starts Here

When we started designing our Proficient Protege cabinet speakers, we looked at Dolby Atmos® and DTS:X® and the way homeowners want their loudspeakers to play music and movies. The result is a line built to sound great & look good in any room in their home.

Our Proficient Protege speakers have a smooth, stealthy matte black look that blends with any decor. Every model features the best combination of drivers we've ever assembled: precise, powerful graphite woofers paired with exceptionally accurate silk dome tweeters.

Give the new Proficient Protege speakers a long listen. We think they might just change your attitude about cabinet loudspeakers. They're built not just to be heard, but to be listened to and loved.

Just what you would expect from Proficient.

PROFICIENT  
**Protege**<sup>™</sup>  
Cabinet Loudspeakers

# Table of Contents

<b>Category</b>	<b>Page</b>
Proficient Protege Cabinet Speakers .....	4
Proficient Signature LCR Speakers.....	8
Proficient Signature Whole-House Speakers .....	9
Proficient Signature & Protege Whole-House Ceiling Speakers .....	10
Proficient Signature & Protege LCR Speakers.....	12
Proficient Signature & Protege Inwall Speakers .....	14
Proficient Protege Twin-Tweeter Ceiling Speakers .....	15
Proficient Protege Powered Subwoofers.....	16
Proficient Protege Passive Architectural Subwoofers.....	17
180 Watt Mono Sub Amp with Built-In Crossover.....	17
Outdoor/Indoor Speakers.....	18
Outdoor/Indoor Twin-Tweeter Speakers .....	19
Rock Speakers.....	19
Speaker Selectors.....	20
Volume Controls .....	21
Infrared Kits .....	22
Infrared Components .....	23
Pre-Construction Brackets .....	24
Ceiling Tile Brackets.....	25
Back Boxes .....	25
Speaker Cover Plates.....	26
Replacement Speaker Grilles .....	26

PROFICIENT

# Protege

## Cabinet Speakers



### LFS6 Dual 6" Floor Standing Speaker

**ITEM**  
LFS6

**U/M**  
Each

Our top-of-the-line floor standing speakers sound amazing with or without a subwoofer. Dual 6" graphite woofers in a carefully tuned floor standing enclosure deliver pounding bass powerful enough for rock, R&B and the most intense action movies. The smooth midrange of the ultra-light, ultra-rigid graphite cones combines with the sweet sound of a 1" silk dome tweeter to keep everything from female vocals to flutes sounding airy and natural, like they're right there in the room with you. The LFS6 has a matte black finish and removable black grille with neo-magnets. Add the LDA5 speaker to turn the LFS6 into an immersive sound system compatible with height & effect.

- Power Handling: 125 Watts
- Frequency Response: 60Hz - 20kHz
- Impedance: 6Ω
- Sensitivity: 89dB 2.83V/1m
- Cabinet Design: Rounded Corner MDF Cabinets
- Dimensions (H x W x D): 39 11/16" x 8 7/16" x 9 1/2"



### LB62 6" Bookshelf Speakers

**ITEM**  
LB62

**U/M**  
Pair

Our top bookshelf speakers are perfect for smaller systems and surround sound. Features 6" graphite woofers, 1" silk dome tweeters and 100 watt power handling. The LB62 has a matte black finish and removable black grilles with neo-magnets, integrated flush mounted single-slot wall mounts and threaded brass inserts for OmniMount 15.0 Wall or 15.0 Ceiling brackets. Add the LDA5 speaker to turn the LB62 into an immersive sound system compatible with height & effect.

- Power Handling: 100 Watts
- Frequency Response: 74Hz - 20kHz
- Impedance: 6Ω
- Sensitivity: 87dB 2.83V/1m
- Cabinet Design: Rounded Corner MDF Cabinets
- Dimensions (H x W x D): 13 1/8" x 8 7/16" x 9 1/2"

### LB52 5" Bookshelf Speakers

**ITEM**  
LB52

**U/M**  
Pair

A small bookshelf speaker that delivers spectacular sound in tight spaces and works great for home theater systems, too. Features 5" graphite woofers, 1" silk dome tweeters and 80 watt power handling. The LB52 has a matte black finish and removable black grilles with neo-magnets, integrated flush mounted single-slot wall mounts and threaded brass inserts for OmniMount 15.0 Wall or 15.0 Ceiling brackets and OmniMount 10.0 Wall / Ceiling brackets.

- Power Handling: 80 Watts
- Frequency Response: 78Hz - 20kHz
- Impedance: 6Ω
- Sensitivity: 86dB 2.83V/1m
- Cabinet Design: Rounded Corner MDF Cabinets
- Dimensions (H x W x D): 11 3/4" x 7 3/16" x 8 1/2"



PROFICIENT

# Protege<sup>™</sup>

## Cabinet Speakers



### LSB3 3-Channel Passive Soundbar

**ITEM**  
LSB3

**U/M**  
Each

Use this three-channel passive soundbar with any A/V receiver to build a compact yet powerful home theater system. Features six 3" graphite woofers, three 1" silk dome tweeters and 60 watt (per channel) power handling. The LSB3 has a matte black finish and removable black grille with neo-magnets. Includes a Proficient-designed horizontally adjustable wall-mounting bracket.

- Power Handling: 60 Watts (per channel)
- Frequency Response: 140Hz - 20kHz
- Impedance: 6Ω
- Sensitivity: 88dB 2.83V/1m
- Cabinet Design: Rounded Corner MDF Cabinets
- Dimensions (H x W x D): 53/16" x 3913/16" x 2¾"

### LCRE5 Dual 5" LCR & Effect Speaker

**ITEM**  
LCRE5

**U/M**  
Each

Our best LCR & effect speaker delivers high power from its two 5" graphite woofers, a 1" silk dome tweeter and 100 watt power handling. Features a matte black finish, removable black grille with neo-magnets and two integrated flush mounted cross-slotted wall mounts. Easily mounts horizontally or vertically.

- Power Handling: 100 Watts
- Frequency Response: 74Hz - 20kHz
- Impedance: 6Ω
- Sensitivity: 87dB 2.83V/1m
- Cabinet Design: Rounded Corner MDF Cabinets
- Dimensions (H x W x D): 73/16" x 20" x 4"



### LCRE4 Dual 4" LCR & Effect Speaker

**ITEM**  
LCRE4

**U/M**  
Each

A compact LCR & effect speaker that's perfect for small media rooms, dens and compact stereo systems. Features two 4" graphite woofers, a 1" silk dome tweeter and 90 watt power handling. The LCRE4 has a matte black finish, removable black grille with neo-magnets and two integrated flush mounted cross-slotted wall mounts. Easily mounts horizontally or vertically.

- Power Handling: 90 Watts
- Frequency Response: 80Hz - 20kHz
- Impedance: 6Ω
- Sensitivity: 86dB 2.83V/1m
- Cabinet Design: Rounded Corner MDF Cabinets
- Dimensions (H x W x D): 63/16" x 20" x 4"



### LDA5 5" Dolby Atmos<sup>®</sup> Speakers

**ITEM**  
LDA5

**U/M**  
Pair

Our Dolby Atmos enabled loudspeakers reflect sound off the ceiling for immersive Dolby Atmos and DTS:X surround sound. Features a slanted speaker baffle, 5" graphite woofers, 1" silk dome tweeters and 60 watt power handling. The LDA5 features a matte black finish, removable black grilles with neo-magnets and integrated flush mounted single-slot wall mounts. Designed to sit on top of the LFS6 or LB62, or mount on the wall below the ceiling.

- Power Handling: 60 Watts
- Frequency Response: 120Hz - 20kHz
- Impedance: 6Ω
- Sensitivity: 84dB 2.83V/1m
- Cabinet Design: Rounded Corner MDF Cabinets
- Dimensions (H x W x D): 57/8" x 67/8" x 10¼"



# Red Hot Design. White



# Knuckle Performance.

A flagship product line built for the few, not the many. Its creation is free of restrictions that favor bottom line compromise ahead of top line performance. These considerations led us to produce the Proficient Signature Class.

It's Proficient's best of everything, an all star lineup featuring nine flagship speakers from home theater to whole house audio. Each speaker represents an unmatched combination of power, precision and performance.

Proficient Signature class is all about qualities rarely seen working and playing well together in many other speaker brands. Like value and luxury. Innovation and tradition. Exuberance and poise.

The Proficient Signature Class is where sound performance you never thought possible becomes something you just can't live without. Experience the new Signature Class. Just what you would expect from Proficient.

PROFICIENT  
**Signature**<sup>™</sup>

PROFICIENT

# Signature™

## LCR Speakers

### C1075s 10" Ceiling LCR Speaker

**ITEM**  
C1075s

**U/M**  
Each

One LCR ceiling speaker with woofer and midrange/tweeter bridge fixed at a 15° angle. 10" Kevlar® woofer, 3" pivoting Kevlar® midrange, 1" pivoting aluminum dome tweeter, ±3dB midrange & treble contour switches and 200 watt power handling. Required for installation, the included PCB-C1000 bracket is designed for new construction as well as retrofit applications.

- Replaces C1031 Ceiling LCR Speaker
- Power Handling: 200 Watts
- Frequency Response: 25Hz - 22kHz
- Impedance: 4Ω
- Sensitivity: 94dB 1W/1m
- Includes Thin-Bezel Grille held by Neo Magnets
- Diameter x Depth: 133/8" x 77/8"
- Ceiling Cut Out: 117/8"



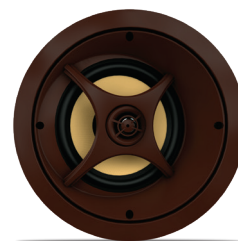
### C875s 8" Ceiling LCR Speaker

**ITEM**  
C875s

**U/M**  
Each

One LCR ceiling speaker with woofer and tweeter bridge fixed at a 15° angle. 8" Kevlar® woofer and 1" pivoting aluminum dome tweeter, ±3dB bass & treble contour switches and 175 watt power handling.

- Replaces C871 Ceiling LCR Speaker
- Power Handling: 175 Watts
- Frequency Response: 28Hz - 22kHz
- Impedance: 8Ω
- Sensitivity: 92dB 1W/1m
- Includes Thin-Bezel Grille held by Neo Magnets
- Diameter x Depth: 111/8" x 53/4"
- Ceiling Cut Out: 93/4"



### C675s 6½" Ceiling LCR Speaker

**ITEM**  
C675s

**U/M**  
Each

One LCR ceiling speaker with woofer and tweeter bridge fixed at a 15° angle. 6½" Kevlar® woofer and 1" pivoting aluminum dome tweeter and 125 watt power handling.

- New Ceiling LCR Speaker
- Power Handling: 125 Watts
- Frequency Response: 32Hz - 22kHz
- Impedance: 8Ω
- Sensitivity: 90dB 1W/1m
- Includes Thin-Bezel Grille held by Neo Magnets
- Diameter x Depth: 9¼" x 315/16"
- Ceiling Cut Out: 8¼"



### IW675s 6½" Inwall LCR Speaker

**ITEM**  
IW675s

**U/M**  
Each

One inwall LCR speaker with two 6½" Kevlar® woofers, 1" pivoting aluminum dome tweeter, ±3dB bass & treble contour switches and 150 watt power handling. Fits horizontally between 16" on-center wall studs.

- Replaces IW655 Inwall LCR Speaker
- Power Handling: 150 Watts
- Frequency Response: 40Hz - 22kHz
- Impedance: 8Ω
- Sensitivity: 90dB 1W/1m
- Includes Thin-Bezel Grille held by Neo Magnets
- Dimensions (H x W x D): 9" x 161/8" x 33/16"
- Wall Cut Out (H x W): 7½" x 14½"

### IW575s 5¼" Inwall LCR Speaker

**ITEM**  
IW575s

**U/M**  
Each

One inwall LCR speaker with two 5¼" Kevlar® woofers, 1" pivoting aluminum dome tweeter, ±3dB bass & treble contour switches and 125 watt power handling.

- Replaces IW555 Inwall LCR Speaker
- Power Handling: 125 Watts
- Frequency Response: 50Hz - 22kHz
- Impedance: 8Ω
- Sensitivity: 88dB 1W/1m
- Includes Thin-Bezel Grille held by Neo Magnets
- Dimensions (H x W x D): 8" x 1515/16" x 33/8"
- Wall Cut Out (H x W): 63/16" x 14½"





# Signature

## Whole-House Speakers



### C895s 8" Ceiling Speakers

**ITEM**  
C895s

**U/M**  
Pair

One pair of ceiling speakers with 8" Kevlar® woofers, cast magnesium woofer baskets, 1" pivoting aluminum dome tweeters, ±3dB bass & treble contour switches and 175 watt power handling.

- Replaces C851 Ceiling Speakers
- Power Handling: 175 Watts
- Frequency Response: 28Hz - 22kHz
- Impedance: 8Ω
- Sensitivity: 92dB 1W/1m
- Includes Thin-Bezel Grilles held by Neo Magnets
- Diameter x Depth: 111/8" x 4½"
- Ceiling Cut Out: 9¾"

### C695s 6½" Ceiling Speakers

**ITEM**  
C695s

**U/M**  
Pair

One pair of ceiling speakers with 6½" Kevlar® woofers, cast magnesium woofer baskets, 1" pivoting aluminum dome tweeters, +3dB bass & treble contour switches and 150 watt power handling.

- Replaces C646 Ceiling Speakers
- Power Handling: 150 Watts
- Frequency Response: 32Hz - 22kHz
- Impedance: 8Ω
- Sensitivity: 90dB 1W/1m
- Includes Thin-Bezel Grilles held by Neo Magnets
- Diameter x Depth: 9¼" x 315/16"
- Ceiling Cut Out: 8¼"



### W695s 6½" Inwall Speakers

**ITEM**  
W695s

**U/M**  
Pair

One pair of inwall speakers with 6½" Kevlar® woofers, cast magnesium woofer baskets, 1" pivoting aluminum dome tweeters, +3dB bass & treble contour switches and 150 watt power handling.

- Replaces W692 Inwall Speakers
- Power Handling: 150 Watts
- Frequency Response: 32Hz - 22kHz
- Impedance: 8Ω
- Sensitivity: 90dB 1W/1m
- Includes Thin-Bezel Grilles held by Neo Magnets
- Dimensions (H x W x D): 12¼" x 83/16" x 33/8"
- Wall Cut Out (H x W): 107/8" x 6¾"

### Signature C895s

**ITEM**  
C895s

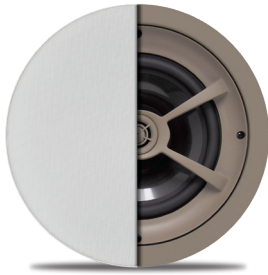
**U/M**  
Pair

One pair of ceiling speakers with 8" Kevlar® woofers, cast magnesium woofer baskets, 1" pivoting aluminum dome tweeters, ±3dB bass & treble contour switches and 175 watt power handling.

- Replaces C851 Ceiling Speakers
- Power Handling: 175 Watts
- Frequency Response: 28Hz - 22kHz
- Impedance: 8Ω
- Sensitivity: 92dB 1W/1m
- Includes Thin-Bezel Grilles held by Neo Magnets
- Diameter x Depth: 111/8" x 4½"
- Ceiling Cut Out: 9¾"



# Whole-House Ceiling Speakers



## Protege C801

**ITEM**  
PAS11801

**U/M**  
Pair

One pair of ceiling speakers with 8" graphite woofers, 1" pivoting aluminum dome tweeters, +3dB bass & treble contour switches and 150 watt power handling.

- Replaces C800 Ceiling Speakers
- Power Handling: 150 Watts
- Frequency Response: 28Hz - 22kHz
- Impedance: 8Ω
- Sensitivity: 92dB 1W/1m
- Includes Thin-Bezel Grilles held by Neo Magnets
- Diameter x Depth: 111/8" x 4 1/4"
- Ceiling Cut Out: 9 3/4"

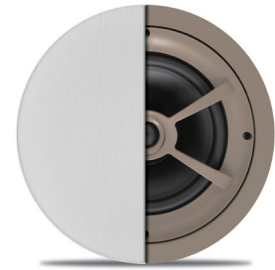
## Protege C791

**ITEM**  
PAS11791

**U/M**  
Pair

One pair of ceiling speakers with 8" polypropylene woofers, 1" pivoting soft dome tweeters and 125 watt power handling.

- Replaces C790 Ceiling Speakers
- Power Handling: 125 Watts
- Frequency Response: 36Hz - 20kHz
- Impedance: 8Ω
- Sensitivity: 92dB 1W/1m
- Includes Thin-Bezel Grilles held by Neo Magnets
- Diameter x Depth: 111/8" x 4 1/4"
- Ceiling Cut Out: 9 3/4"



## Signature C695s

**ITEM**  
C695s

**U/M**  
Pair

One pair of ceiling speakers with 6 1/2" Kevlar® woofers, cast magnesium woofer baskets, 1" pivoting aluminum dome tweeters, +3dB bass & treble contour switches and 150 watt power handling.

- Replaces C646 Ceiling Speakers
- Power Handling: 150 Watts
- Frequency Response: 32Hz - 22kHz
- Impedance: 8Ω
- Sensitivity: 90dB 1W/1m
- Includes Thin-Bezel Grilles held by Neo Magnets
- Diameter x Depth: 9 1/4" x 3 15/16"
- Ceiling Cut Out: 8 1/4"

## Protege C641

**ITEM**  
PAS11641

**U/M**  
Pair

One pair of ceiling speakers with 6 1/2" graphite woofers, 1" pivoting aluminum dome tweeters, +3dB bass & treble contour switches and 125 watt power handling.

- Replaces C640 Ceiling Speakers
- Power Handling: 125 Watts
- Frequency Response: 32Hz - 22kHz
- Impedance: 8Ω
- Sensitivity: 92dB 1W/1m
- Includes Thin-Bezel Grilles held by Neo Magnets
- Diameter x Depth: 9 1/4" x 3 5/8"
- Ceiling Cut Out: 8 1/4"



## Protege C626

**ITEM**  
PAS11626

**U/M**  
Pair

One pair of ceiling speakers with 6 1/2" graphite woofers, 1" pivoting silk dome tweeters and 100 watt power handling.

- Replaces C625 Ceiling Speakers
- Power Handling: 100 Watts
- Frequency Response: 45Hz - 20kHz
- Impedance: 8Ω
- Sensitivity: 91dB 1W/1m
- Includes Thin-Bezel Grilles held by Neo Magnets
- Diameter x Depth: 9 1/4" x 4"
- Ceiling Cut Out: 8 1/4"

# Whole-House Ceiling Speakers

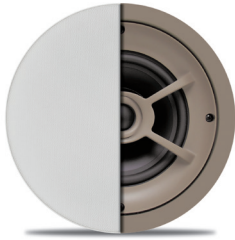
## Protege C635

One pair of ceiling speakers with 6½" aluminum woofers, 1" pivoting titanium dome tweeters and 100 watt power handling.

- New Ceiling Speakers
- Power Handling: 100 Watts
- Frequency Response: 40Hz - 22kHz
- Impedance: 8Ω

<b>ITEM</b>	<b>U/M</b>
C635	Pair

- Sensitivity: 92dB 1W/1m
- Includes Thin-Bezel Grilles held by Neo Magnets
- Diameter x Depth: 9¼" x 3¾"
- Ceiling Cut Out: 8¼"



## Protege C621

One pair of ceiling speakers with 6½" polypropylene woofers, 1" pivoting silk dome tweeters and 100 watt power handling.

- Replaces C620 Ceiling Speakers
- Power Handling: 100 Watts
- Frequency Response: 45Hz - 20kHz
- Impedance: 8Ω

<b>ITEM</b>	<b>U/M</b>
PAS11621	Pair

- Sensitivity: 91dB 1W/1m
- Includes Thin-Bezel Grilles held by Neo Magnets
- Diameter x Depth: 9¼" x 35/8"
- Ceiling Cut Out: 8¼"

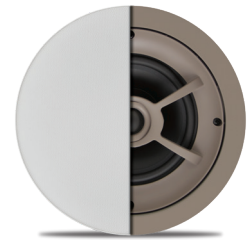
## Protege C612

One pair of ceiling speakers with 6½" polypropylene woofers, 1" pivoting soft dome tweeters and 85 watt power handling.

- Replaces C610 Ceiling Speakers
- Power Handling: 85 Watts
- Frequency Response: 45Hz - 20kHz
- Impedance: 8Ω

<b>ITEM</b>	<b>U/M</b>		
PAS11612	Pair	\$265	\$105

- Sensitivity: 91dB 1W/1m
- Includes Thin-Bezel Grilles held by Neo Magnets
- Diameter x Depth: 9¼" x 35/8"
- Ceiling Cut Out: 8¼"



## Protege C606

One pair of ceiling speakers with 6½" polypropylene woofers, ¾" soft dome tweeters and 75 watt power handling.

- Replaces C605 Ceiling Speakers
- Power Handling: 75 Watts
- Frequency Response: 45Hz - 20kHz
- Impedance: 8Ω

<b>ITEM</b>	<b>U/M</b>
PAS11606	Pair

- Sensitivity: 90dB 1W/1m
- Includes Thin-Bezel Grilles held by Neo Magnets
- Diameter x Depth: 9¼" x 35/8"
- Ceiling Cut Out: 8¼"

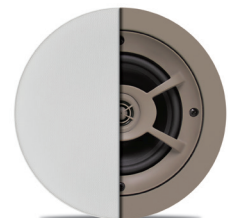
## Protege C501

One pair of ceiling speakers with 5¼" polypropylene woofers, ½" pivoting polyamide hard dome tweeters and 75 watt power handling.

- Replaces C500 Ceiling Speakers
- Power Handling: 75 Watts
- Frequency Response: 40Hz - 20kHz
- Impedance: 8Ω

<b>ITEM</b>	<b>U/M</b>
PAS11501	Pair

- Sensitivity: 90dB 1W/1m
- Includes Thin-Bezel Grilles held by Neo Magnets
- Diameter x Depth: 7¾" x 3¼"
- Ceiling Cut Out: 611/16"



# LCR Speakers

## Signature C1075s

**ITEM**  
C1075s

**U/M**  
Each

One LCR ceiling speaker with woofer and midrange/tweeter bridge fixed at a 15° angle. 10" Kevlar® woofer, 3" pivoting Kevlar® midrange, 1" pivoting aluminum dome tweeter, ±3dB midrange & treble contour switches and 200 watt power handling. Required for installation, the included PCB-C1000 bracket is designed for new construction as well as retrofit applications.

- Replaces C1031 Ceiling LCR Speaker
- Power Handling: 200 Watts
- Frequency Response: 25Hz - 22kHz
- Impedance: 4Ω
- Sensitivity: 94dB 1W/1m
- Includes Thin-Bezel Grille held by Neo Magnets
- Diameter x Depth: 133/8" x 77/8"
- Ceiling Cut Out: 117/8"



## Signature C875s

**ITEM**  
C875s

**U/M**  
Each

One LCR ceiling speaker with woofer and tweeter bridge fixed at a 15° angle. 8" Kevlar® woofer and 1" pivoting aluminum dome tweeter, ±3dB bass & treble contour switches and 175 watt power handling.

- Replaces C871 Ceiling LCR Speaker
- Power Handling: 175 Watts
- Frequency Response: 28Hz - 22kHz
- Impedance: 8Ω
- Sensitivity: 92dB 1W/1m
- Includes Thin-Bezel Grille held by Neo Magnets
- Diameter x Depth: 111/8" x 53/4"
- Ceiling Cut Out: 93/4"

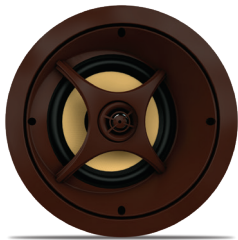
## Protege C841

**ITEM**  
PAS13841

**U/M**  
Each

One LCR ceiling speaker with woofer and tweeter bridge fixed at a 15° angle. 8" graphite woofer and 1" pivoting silk dome tweeter, ±3dB bass & treble contour switches and 150 watt power handling.

- Replaces C840 Ceiling LCR Speaker
- Power Handling: 150 Watts
- Frequency Response: 40Hz - 22kHz
- Impedance: 8Ω
- Sensitivity: 92dB 1W/1m
- Includes Thin-Bezel Grille held by Neo Magnets
- Diameter x Depth: 111/8" x 57/8"
- Ceiling Cut Out: 93/4"



## Signature C675s

**ITEM**  
C675s

**U/M**  
Each

One LCR ceiling speaker with woofer and tweeter bridge fixed at a 15° angle. 6½" Kevlar® woofer and 1" pivoting aluminum dome tweeter and 125 watt power handling.

- New Ceiling LCR Speaker
- Power Handling: 125 Watts
- Frequency Response: 32Hz - 22kHz
- Impedance: 8Ω
- Sensitivity: 90dB 1W/1m
- Includes Thin-Bezel Grille held by Neo Magnets
- Diameter x Depth: 9¼" x 315/16"
- Ceiling Cut Out: 8¼"

## Protege C661

**ITEM**  
PAS13661

**U/M**  
Each

One LCR ceiling speaker with woofer and tweeter bridge fixed at a 15° angle. 6½" graphite woofer and 1" pivoting aluminum dome tweeter and 125 watt power handling.

- Replaces C660 Ceiling LCR Speaker
- Power Handling: 125 Watts
- Frequency Response: 36Hz - 22kHz
- Impedance: 8Ω
- Sensitivity: 92dB 1W/1m
- Includes Thin-Bezel Grille held by Neo Magnets
- Diameter x Depth: 9¼" x 49/16"
- Ceiling Cut Out: 8¼"



# LCR Speakers



## Protege C656

**ITEM**      **U/M**  
PAS13656      Each

One LCR ceiling speaker with woofer and tweeter bridge fixed at a 15° angle. 6½" graphite woofer and 1" pivoting silk dome tweeter and 100 watt power handling.

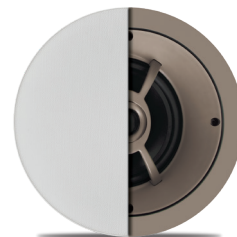
- Replaces C655 Ceiling LCR Speaker
- Power Handling: 100 Watts
- Frequency Response: 45Hz - 20kHz
- Impedance: 8Ω
- Sensitivity: 91dB 1W/1m
- Includes Thin-Bezel Grille held by Neo Magnets
- Diameter x Depth: 9¼" x 5"
- Ceiling Cut Out: 8¼"

## Protege C651

**ITEM**      **U/M**  
PAS13651      Each

One LCR ceiling speaker with woofer and tweeter bridge fixed at a 15° angle. 6½" polypropylene woofer and 1" pivoting silk dome tweeter and 100 watt power handling.

- Replaces C650 Ceiling LCR Speaker
- Power Handling: 100 Watts
- Frequency Response: 45Hz - 20kHz
- Impedance: 8Ω
- Sensitivity: 91dB 1W/1m
- Includes Thin-Bezel Grille held by Neo Magnets
- Diameter x Depth: 9¼" x 49/16"
- Ceiling Cut Out: 8¼"



## Signature IW675s

**ITEM**      **U/M**  
IW675s      Each

One inwall LCR speaker with two 6½" Kevlar® woofers, 1" pivoting aluminum dome tweeter, ±3dB bass & treble contour switches and 150 watt power handling. Fits horizontally between 16" on-center wall studs.

- Replaces IW655 Inwall LCR Speaker
- Power Handling: 150 Watts
- Frequency Response: 40Hz - 22kHz
- Impedance: 8Ω
- Sensitivity: 90dB 1W/1m
- Includes Thin-Bezel Grille held by Neo Magnets
- Dimensions (H x W x D): 9" x 161/8" x 33/16"
- Wall Cut Out (H x W): 7½" x 14½"

## Protege IW630

**ITEM**      **U/M**  
PAS22630      Each

One inwall LCR speaker with two 6½" graphite woofers, 1" pivoting soft dome tweeter, ±3dB bass & treble contour switches and 125 watt power handling. Fits horizontally between 16" on-center wall studs.

- Replaces IW625 Inwall LCR Speaker
- Power Handling: 125 Watts
- Frequency Response: 55Hz - 20kHz
- Impedance: 8Ω
- Sensitivity: 90dB 1W/1m
- Includes Thin-Bezel Grille held by Neo Magnets
- Dimensions (H x W x D): 9" x 161/8" x 3"
- Wall Cut Out (H x W): 7½" x 14½"



## Signature IW575s

**ITEM**      **U/M**  
IW575s      Each

One inwall LCR speaker with two 5¼" Kevlar® woofers, 1" pivoting aluminum dome tweeter, ±3dB bass & treble contour switches and 125 watt power handling.

- Replaces IW555 Inwall LCR Speaker
- Power Handling: 125 Watts
- Frequency Response: 50Hz - 22kHz
- Impedance: 8Ω
- Sensitivity: 88dB 1W/1m
- Includes Thin-Bezel Grille held by Neo Magnets
- Dimensions (H x W x D): 8" x 1515/16" x 33/8"
- Wall Cut Out (H x W): 63/16" x 14½"

## Protege IW530

**ITEM**      **U/M**  
PAS22530      Each

One inwall LCR speaker with two 5¼" graphite woofers, 1" pivoting aluminum dome tweeter, ±3dB bass & treble contour switches and 100 watt power handling.

- Replaces IW525 Inwall LCR Speaker
- Power Handling: 100 Watts
- Frequency Response: 65Hz - 20kHz
- Impedance: 8Ω
- Sensitivity: 88dB 1W/1m
- Includes Thin-Bezel Grille held by Neo Magnets
- Dimensions (H x W x D): 8" x 1515/16" x 37/16"
- Wall Cut Out (H x W): 63/16" x 14½"



# Whole-House Inwall Speakers

## Signature W895s

**ITEM**  
W895s      **U/M**  
Pair

One pair of inwall speakers with 8" Kevlar<sup>®</sup> woofers, cast magnesium woofer baskets, 1" pivoting aluminum dome tweeters,  $\pm 3$ dB bass & treble contour switches and 175 watt power handling.

- Replaces W852 Inwall Speakers
- Power Handling: 175 Watts
- Frequency Response: 28Hz - 22kHz
- Impedance: 8 $\Omega$
- Sensitivity: 92dB 1W/1m
- Includes Thin-Bezel Grilles held by Neo Magnets
- Dimensions (H x W x D): 147/8" x 101/8" x 41/8"
- Wall Cut Out (H x W): 135/8" x 8 $\frac{3}{4}$ "



## Protege W802

**ITEM**  
PAS21802      **U/M**  
Pair

One pair of inwall speakers with 8" graphite woofers, 1" pivoting aluminum dome tweeters, +3dB bass & treble contour switches and 150 watt power handling.

- Replaces W800 Inwall Speakers
- Power Handling: 150 Watts
- Frequency Response: 28Hz - 22kHz
- Impedance: 8 $\Omega$
- Sensitivity: 92dB 1W/1m
- Includes Thin-Bezel Grilles held by Neo Magnets
- Dimensions (H x W x D): 147/8" x 101/8" x 3 $\frac{3}{4}$ "
- Wall Cut Out (H x W): 135/8" x 8 $\frac{3}{4}$ "

## Signature W695s

**ITEM**  
W695s      **U/M**  
Pair

One pair of inwall speakers with 6 $\frac{1}{2}$ " Kevlar<sup>®</sup> woofers, cast magnesium woofer baskets, 1" pivoting aluminum dome tweeters, +3dB bass & treble contour switches and 150 watt power handling.

- Replaces W692 Inwall Speakers
- Power Handling: 150 Watts
- Frequency Response: 32Hz - 22kHz
- Impedance: 8 $\Omega$
- Sensitivity: 90dB 1W/1m
- Includes Thin-Bezel Grilles held by Neo Magnets
- Dimensions (H x W x D): 12 $\frac{1}{4}$ " x 83/16" x 33/8"
- Wall Cut Out (H x W): 107/8" x 6 $\frac{3}{4}$ "



## Protege W672

**ITEM**  
PAS21672      **U/M**  
Pair

One pair of inwall speakers with 6 $\frac{1}{2}$ " polypropylene woofers, 1" pivoting silk dome tweeters and 100 watt power handling.

- Replaces W670 Inwall Speakers
- Power Handling: 100 Watts
- Frequency Response: 36Hz - 20kHz
- Impedance: 8 $\Omega$
- Sensitivity: 91dB 1W/1m
- Includes Thin-Bezel Grilles held by Neo Magnets
- Dimensions (H x W x D): 12 $\frac{1}{4}$ " x 83/16" x 31/8"
- Wall Cut Out (H x W): 107/8" x 6 $\frac{3}{4}$ "



## Protege W667

**ITEM**  
PAS21667      **U/M**  
Pair

One pair of inwall speakers with 6 $\frac{1}{2}$ " polypropylene woofers,  $\frac{3}{4}$ " soft dome tweeters and 75 watt power handling.

- Replaces W665 Inwall Speakers
- Power Handling: 75 Watts
- Frequency Response: 45Hz - 20kHz
- Impedance: 8 $\Omega$
- Sensitivity: 90dB 1W/1m
- Includes Thin-Bezel Grilles held by Neo Magnets
- Dimensions (H x W x D): 12 $\frac{1}{4}$ " x 83/16" x 33/16"
- Wall Cut Out (H x W): 107/8" x 6 $\frac{3}{4}$ "

# Twin-Tweeter Ceiling Speakers



## Protege C825TT

ITEM	U/M
PAS12825	Each

One ceiling speaker with 8" dual voice coil graphite woofer, two 1" pivoting aluminum dome tweeters, +3dB bass & treble contour switches and 150 watt power handling.

- Replaces C800TT Single Stereo Ceiling Speaker
- Power Handling: 150 Watts
- Frequency Response: 28Hz - 22kHz
- Impedance: 8Ω
- Sensitivity: 92dB 1W/1m
- Includes Thin-Bezel Grille held by Neo Magnets
- Diameter x Depth: 111/8" x 4¼"
- Ceiling Cut Out: 9¾"

---

## Protege C625TT

ITEM	U/M
PAS12625	Each

One ceiling speaker with 6½" dual voice coil polypropylene woofer, two ½" hard dome tweeters and 75 watt power handling.

- Replaces C600TT Single Stereo Ceiling Speaker
- Power Handling: 75 Watts
- Frequency Response: 36Hz - 20kHz
- Impedance: 8Ω
- Sensitivity: 92dB 1W/1m
- Includes Thin-Bezel Grille held by Neo Magnets
- Diameter x Depth: 9¼" x 35/8"
- Ceiling Cut Out: 8¼"



PROFICIENT

# Protege<sup>™</sup>

## Powered Subwoofers

### FS12 12" Floor Standing Sub

One dual-drive subwoofer with 12" front-firing polypropylene-coated fiber composite woofer, 12" down-firing passive radiator and Class D Amp with 300 watts RMS, 600 watts peak. Anti-clipping circuitry assures high output with low distortion. Black wood grain vinyl finish and dampened rubber feet.

- Amplifier Type: Class D Amp
- Power Rating Continuous: 300 Watts RMS
- Power Rating Peak: 600 Watts Peak
- Frequency Response: 28Hz - 150Hz
- Subwoofer Output: 106dB SPL
- Inputs: Left & Right Line Level, LFE
- Outputs: Line Level High-Pass

- | ITEM | U/M  |
|------|------|
| FS12 | Each |
- Protection: Anti-Clipping Circuitry
  - Power On/Off: Auto Sensing
  - Phase Switch: 0 - 180°
  - Crossover: 50Hz - 150Hz; Bypass
  - Finish: Black Wood Grain Vinyl
  - Dampened Rubber Feet
  - Dimensions (H x W x D): 165/8" x 14½" x 15½"



### FS10 10" Floor Standing Sub

One dual-drive subwoofer with 10" front-firing polypropylene-coated fiber composite woofer, 10" down-firing passive radiator and Class D Amp with 250 watts RMS, 500 watts peak. Anti-clipping circuitry assures high output with low distortion. Black wood grain vinyl finish and dampened rubber feet.

- Amplifier Type: Class D Amp
- Power Rating Continuous: 250 Watts RMS
- Power Rating Peak: 500 Watts Peak
- Frequency Response: 30Hz - 150Hz
- Subwoofer Output: 103dB SPL
- Inputs: Left & Right Line Level, LFE
- Outputs: Line Level High-Pass

- | ITEM | U/M  |
|------|------|
| FS10 | Each |
- Protection: Anti-Clipping Circuitry
  - Power On/Off: Auto Sensing
  - Phase Switch: 0 - 180°
  - Crossover: 50Hz - 150Hz; Bypass
  - Finish: Black Wood Grain Vinyl
  - Dampened Rubber Feet
  - Dimensions (H x W x D): 151/8" x 13¼" x 14"

### FS8 8" Floor Standing Sub

One dual-drive subwoofer with 8" front-firing polypropylene-coated fiber composite woofer, 8" down-firing passive radiator and Class D Amp with 200 watts RMS, 400 watts peak. Anti-clipping circuitry assures high output with low distortion. Black wood grain vinyl finish and dampened rubber feet.

- Amplifier Type: Class D Amp
- Power Rating Continuous: 200 Watts RMS
- Power Rating Peak: 400 Watts Peak
- Frequency Response: 32Hz - 150Hz
- Subwoofer Output: 100dB SPL
- Inputs: Left & Right Line Level, LFE
- Outputs: Line Level High-Pass

- | ITEM | U/M  |
|------|------|
| FS8  | Each |
- Protection: Anti-Clipping Circuitry
  - Power On/Off: Auto Sensing
  - Phase Switch: 0 - 180°
  - Crossover: 50Hz - 150Hz; Bypass
  - Finish: Black Wood Grain Vinyl
  - Dampened Rubber Feet
  - Dimensions (H x W x D): 135/8" x 11¾" x 12½"





PROFICIENT

# Protege™

## Passive Architectural Subwoofers



### IWS105 10" Inwall Sub

**ITEM**  
PAS24105      **U/M**  
Each

Inwall passive subwoofer with a 10" long excursion treated paper cone woofer and inverted ferrite magnet structure with a power handling capacity of 250 watts. Designed to be used with the Proficient M3 Amp/Crossover. For new construction, use the optional BB-IWS10 MDF back box.

- Replaces IWS100 Inwall Sub
- Power Handling: 250 Watts
- Frequency Response: 36Hz - 150Hz
- Includes Thin-Bezel Grille held by Neo Magnets
- Dimensions (H x W x D): 135/8" x 135/8" x 3 3/4"
- Wall Cut Out (H x W): 121/16" x 121/16"

### ICS11 10" Ceiling Sub

**ITEM**  
PAS13111      **U/M**  
Each

Ceiling passive subwoofer with a 10" long excursion graphite woofer and a power handling capacity of 175 watts. Designed to be used with the Proficient M3 Amp/Crossover.

- Replaces ICS10 Ceiling Sub
- Power Handling: 175 Watts
- Frequency Response: 30Hz - 120Hz
- Includes Thin-Bezel Grille held by Neo Magnets
- Diameter x Depth: 133/8" x 55/8"
- Ceiling Cut Out: 117/8"



### M3 Amp/Crossover

**ITEM**  
PAS72300      **U/M**  
Each

180 watt high-current mono amp with built-in crossover network. Crossover features adjustments for subwoofer fine-tuning to individual room acoustics. Includes bolt-on rack ears.

- Use with Proficient Inwall & Ceiling Architectural Subs
- Premium Cast Aluminum Faceplate
- Power: 180 Watts Single Channel
- Variable Low Pass Crossover: 35Hz - 150Hz
- LFE Input & Pass Through Output
- Phase Switch
- Remote Power-On Switching via Signal Sensing
- Includes Bolt-On Rack Ears
- Dimensions (H x W x D): 4" x 171/8" x 125/8"
- Weight: 18 lbs



### BB-IWS10 Back Box

**ITEM**  
PAS02100      **U/M**  
Each

Medium Density Fiberboard (MDF) back box for the IWS105 inwall sub, designed to fit any standard 16" stud bay. Cuts down on translational energy vibration between adjacent walls. The IWS105 sub is tuned to the BB-IWS10 back box. *Not for use with ICS11.*

- Dimensions (H x W x D): 42 3/4" x 143/8" x 3 1/4"



PROFICIENT

# Outdoor

## Outdoor / Indoor Speakers

### AW830wht | blk

WHT	BLK	U/M
PAS42830	PAS42833	Pair

One pair of indoor/outdoor speakers with 8" polypropylene woofers, 3" graphite midrange, 1" pivoting soft dome tweeters and 175 watt power handling. Includes swivel mounting brackets.

**Order in white or black.**

- Power Handling: 175 Watts
- Frequency Response: 35Hz - 20kHz
- Impedance: 4Ω
- Sensitivity: 89dB 1W/1m
- Dimensions (H x W x D): 15¾" x 8¾" x 8¾"



### AW650wht | blk

WHT	BLK	U/M
PAS41650	PAS41653	Pair

One pair of indoor/outdoor speakers with 6½" polypropylene woofers, 1" pivoting Supernil soft dome tweeters and 150 watt power handling. Includes swivel mounting brackets. **Order in white or black.**

- Power Handling: 150 Watts
- Frequency Response: 37Hz - 20kHz
- Impedance: 8Ω
- Sensitivity: 89dB 1W/1m
- Dimensions (H x W x D): 11" x 7" x 6¼"

### AW525wht | blk

WHT	BLK	U/M
PAS41525	PAS41527	Pair

One pair of indoor/outdoor speakers with 5¼" polypropylene woofers, 1" pivoting Supernil soft dome tweeters and 125 watt power handling. Includes swivel mounting brackets. **Order in white or black.**

- Power Handling: 125 Watts
- Frequency Response: 45Hz - 20kHz
- Impedance: 8Ω
- Sensitivity: 88dB 1W/1m
- Dimensions (H x W x D): 93/16" x 6½" x 63/8"



### AW400wht | blk

WHT	BLK	U/M
PAS41400	PAS41403	Pair

One pair of indoor/outdoor speakers with 4" polypropylene woofers, ¾" Supernil soft dome tweeters and 100 watt power handling. Includes swivel mounting brackets. **Order in white or black.**

- Power Handling: 100 Watts
- Frequency Response: 55Hz - 20kHz
- Impedance: 8Ω
- Sensitivity: 87dB 1W/1m
- Dimensions (H x W x D): 7¾" x 5½" x 5½"

PROFICIENT

# Outdoor™

## Outdoor / Indoor Twin-Tweeter Speakers



### AW600TTwht | blk

<b>WHT</b>	<b>BLK</b>	<b>U/M</b>
PAS42600	PAS42603	Each

One indoor/outdoor speaker with 6½" dual voice coil polypropylene woofer, two 1" pivoting Supernil soft dome tweeters and 125 watt power handling. Weather-resistant ABS housing, powder coated aluminum grille. Includes swivel mounting bracket. **Order in white or black.**

- Power Handling: 125 Watts
- Frequency Response: 50Hz - 20kHz
- Impedance: 4Ω
- Sensitivity: 91dB 1W/1m
- Dimensions (H x W x D): 7" x 12" x 8"

### AW500TTwht | blk

<b>WHT</b>	<b>BLK</b>	<b>U/M</b>
PAS42500	PAS42503	Each

One indoor/outdoor speaker with 5¼" dual voice coil polypropylene woofer, two 1" pivoting Supernil soft dome tweeters and 100 watt power handling. Weather-resistant ABS housing, powder coated aluminum grille. Includes swivel mounting bracket. **Order in white or black.**

- Power Handling: 100 Watts
- Frequency Response: 60Hz - 20kHz
- Impedance: 4Ω
- Sensitivity: 89dB 1W/1m
- Dimensions (H x W x D): 7" x 11" x 6¼"



## Rock Speakers

### R800G / R800S

<b>G</b>	<b>S</b>	<b>U/M</b>
PAS10800	PAS10801	Pair

One pair of rock speakers with 8" graphite woofers, 1" polyamide dome tweeters and 90 watt power handling. **Order in granite or sandstone.**

- Power Handling: 90 Watts
- Frequency Response: 65Hz - 20kHz
- Impedance: 8Ω
- Sensitivity: 95dB 1W/1m
- Weather-Resistant Design
- Dimensions (H x W x D): 14½" x 14½" x 11"



### R650G / R650S

<b>G</b>	<b>S</b>	<b>U/M</b>
PAS10650	PAS10651	Pair

One pair of rock speakers with 6½" graphite woofers, 1" polyamide dome tweeters and 60 watt power handling. **Order in granite or sandstone.**

- Power Handling: 60 Watts
- Frequency Response: 80Hz - 20kHz
- Impedance: 8Ω
- Sensitivity: 88dB 1W/1m
- Weather-Resistant Design
- Dimensions (H x W x D): 11½" x 9½" x 8¼"

# Speaker Selectors



## SS8P

**ITEM**  
PAS71850    **U/M**  
Each

Eight-pair resistor-based on/off speaker selector provides quick, convenient access for up to eight stereo pairs. 125 watts power handling per channel, rear override switch for circuit protection and suction feet for stable operation.

- Power Handling: 125 Watts per Channel
- Frequency Response: 20Hz - 20kHz
- Protection: Front Mounted Switch & Rear Override
- Includes Area Labels
- Dimensions (H x W x D): 23/16" x 17" x 613/32"



## SS4P

**ITEM**  
PAS71450    **U/M**  
Each

Four-pair resistor-based on/off speaker selector provides quick, convenient access for up to four stereo pairs. 125 watts power handling per channel, rear override switch for circuit protection and suction feet for stable operation.

- Power Handling: 125 Watts per Channel
- Frequency Response: 20Hz - 20kHz
- Protection: Front Mounted Switch & Rear Override
- Includes Area Labels
- Dimensions (H x W x D): 23/16" x 83/8" x 613/32"

# Volume Controls



## VC60i

60-watt impedance-balancing volume control with autoformer. Features quick & secure wire connecting system. Fits in most single-gang J-boxes and plaster rings. Includes white, bone and almond plates, inserts and knobs.

- Power Handling: 60 Watts Continuous  
120 Watts Peak Music Power
- Frequency Response: 20Hz - 20kHz
- Steps: 12 (Make Before Break)
- Total Attenuation: 42dB (Max)
- Depth: 2½" Behind Plate

ITEM	U/M
PAS35377	Each



## VC60AW

60-watt weather-resistant volume control sealed against dust and moisture. Fits onto ¾" conduit or can be surface mounted. Available in Gray.

- Power Handling: 60 Watts Continuous  
120 Watts Peak Music Power
- Frequency Response: 20Hz - 20kHz
- Steps: 12 (Make Before Break)
- Total Attenuation: 42dB (Max)
- Dimensions (H x W x D): H 4½" x W 2¾" x D 3½"

ITEM	U/M
PAS34320G	Each

# Infrared Kits



## IR Shelf Top Kit

**ITEM**  
PAS80313      **U/M**  
Each

Contains all components needed for a one room system setup. Includes the following IR components:

- (1) IR Shelf Top Receiver
- (1) IR Router
- (1) IR Power Supply-250mA
- (4) IR Single Flashers



## IR Plasma Kit

**ITEM**  
PAS80315      **U/M**  
Each

Compatible with most Plasma, LCD, LED and DLP. Contains all components needed for a one room system setup. Includes the following IR components:

- (1) IR Plasma Receiver
- (1) IR Router
- (1) IR Power Supply-250mA
- (4) IR Single Flashers



## IR Mini-blk Kit

**ITEM**  
PAS80312BK      **U/M**  
Each

Contains all components needed for a one room system setup. Includes the following IR components:

- (1) IR Mini Receiver-blk
- (1) IR Router
- (1) IR Power Supply-250mA
- (4) IR Single Flashers



## IR Fish Eye Kit

**ITEM**  
PAS80311      **U/M**  
Each

Compatible with most Plasma, LCD, LED and DLP. Contains all components needed for a one room system setup. Includes the following IR components:

- (1) IR Fish Eye Receiver
- (1) IR Router
- (1) IR Power Supply-250mA
- (4) IR Single Flashers

# Infrared Components

## IR Plasma Receiver

ITEM PAS81205 U/M Each

Super small, surface-mount IR plasma receiver. Two-piece design separates the receiver from the "Smart Circuit" electronics package for clean looking installation. The "Smart Circuit" blocks interference from plasmas or CFLs. LEDs indicate system status and IR activity. IR Terminal included for easy, no-cut connection. Compatible with most Plasma, LCD, LED and DLP.



## IR Mini Receiver-blk

ITEM PAS81200BK U/M Each

Surface-mount mini IR receiver features Ambient Noise Suppression and LEDs to indicate system status and IR activity. IR Terminal included for easy, no-cut connection.

- Dimensions (L x W x D): 29/16" x 17/32" x 9/16"

## IR Fish Eye Receiver

ITEM PAS81100 U/M Each

Flush-mount IR receiver features Ambient Noise Suppression and LEDs to indicate system status and IR activity. Includes four flavors of bezels (white, black, almond, and bone) and two Ambient Light Restrictor (ALR) bezels for severe plasma or CFL environments. IR Terminal included for easy, no-cut connection. Compatible with most Plasma, LCD, LED and DLP.

- Dimensions (Dia x L): 15/32" x 25/8"
- Color Bezel (Dia x L): 47/64" x 1/8"

- ALR Bezel (Dia x L): 47/64" x 23/64"



## IR Router

ITEM PAS82200 U/M Each

Central router for all Proficient IR systems. Controls IR receivers and IR Flashers. Equipped with 3.5mm mini jacks for quick connection of IR Receivers and Flashers. Multiple IR Routers can be cascaded for additional IR Flasher output jacks.

## IR Power Supply-250mA

ITEM PS12-0.5 U/M Each

12V DC, 250mA regulated power supply designed for use in small to moderate IR systems. Powers the IR Receivers, IR Router and IR Flashers.



## IR Single Flasher

ITEM PAS83300 U/M Each

LED flashes red to indicate operation. Features docking port which allows quick installation of IR Flasher on a component, as well as easy removal of IR Flasher. Includes an 8' wire for painless hookup to IR Router.

## IR Dual Flasher

ITEM PAS83400 U/M Each

LEDs flash red to indicate operation. Features docking ports which allow quick installation of IR Flashers on components, as well as easy removal of IR Flashers. The Dual IR Flasher splits to two 8' wires for easy hookup to IR Router.



# Pre-Construction Brackets

## PCB-C800

ITEM	U/M
PCB11800	Pair

One pair of pre-construction brackets for new construction. Fits 8" 2-way, LCR & twin-tweeter ceiling speakers.

## PCB-C600

ITEM	U/M
PCB11600	Pair

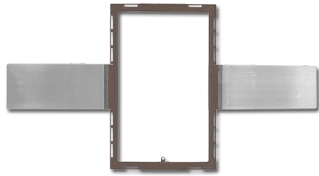
One pair of pre-construction brackets for new construction. Fits 6½" 2-way, LCR & twin-tweeter ceiling speakers.



## PCB-C500

ITEM	U/M
PCB11500	Pair

One pair of pre-construction brackets for new construction. Fits 5¼" ceiling speakers.



## PCB-W800

ITEM	U/M
PCB21800	Pair

One pair of pre-construction brackets for new construction. Fits 8" inwall speakers.

## PCB-W600

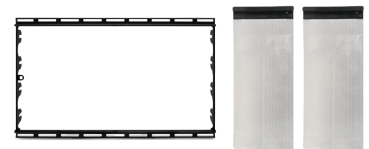
ITEM	U/M
PCB21600	Pair

One pair of pre-construction brackets for new construction. Fits 6½" inwall speakers.

## PCB-IW600

ITEM	U/M
PCB22600	Each

One each pre-construction bracket for new construction. Fits 6½" inwall LCR speakers.



## PCB-IW500

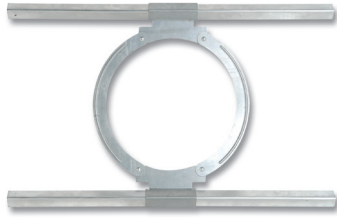
ITEM	U/M
PCB22500	Each

One each pre-construction bracket for new construction. Fits 5¼" inwall LCR speakers.





# Ceiling Tile Brackets



## CTB-C800

One each ceiling tile bracket used in drop ceiling and T-bar type ceiling applications. Fits 8" 2-way, LCR & twin-tweeter ceiling speakers.

<b>ITEM</b>	<b>U/M</b>
CTB11801	Each

## CTB-C600

One each ceiling tile bracket used in drop ceiling and T-bar type ceiling applications. Fits 6½" 2-way, LCR & twin-tweeter ceiling speakers.

<b>ITEM</b>	<b>U/M</b>
CTB11601	Each

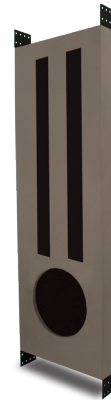
# Back Boxes

## BB-IWS10

Medium Density Fiberboard (MDF) back box for the IWS105 inwall sub, designed to fit any standard 16" stud bay. Cuts down on translational energy vibration between adjacent walls. The IWS105 sub is tuned to the BB-IWS10 back box. *Not for use with ICS11.*

• Dimensions (H x W x D): 42¾" x 143/8" x 3¼"

<b>ITEM</b>	<b>U/M</b>
PAS02100	Each



## BB-C800

One metal back box for 8" 2-way, LCR & twin-tweeter ceiling speakers. **UL 263-03 1-hour fire rating.**

<b>ITEM</b>	<b>U/M</b>
PAS01800	Each

## BB-C650

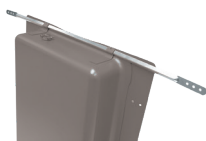
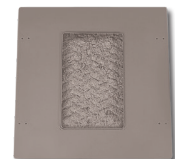
One metal back box for 6½" 2-way, LCR & twin-tweeter ceiling speakers. CMB-24 mounting bars are needed when installing in ceiling joists 24" on-center or suspended ceilings. **UL 263-03 1-hour fire rating.**

<b>ITEM</b>	<b>U/M</b>
PAS01603	Each

## BB-W600

One metal back box for 6½" inwall speakers. **UL 263-03 1-hour fire rating.**

<b>ITEM</b>	<b>U/M</b>
PAS02600	Each



## CMB-24

One pair of ceiling mounting bars slip into clips on BB-C650 back box. For installation in ceiling joists 24" on-center or suspended ceilings.

<b>ITEM</b>	<b>U/M</b>
PAS01000	Pair

# Speaker Cover Plates

## CPC-800 8" Ceiling Cover Plate

**ITEM**  
PAS03800      **U/M**  
Pair

One pair of white cover plates for 8" 2-way, LCR & twin-tweeter ceiling speakers.

## CPC-600 6½" Ceiling Cover Plate

**ITEM**  
PAS03600      **U/M**  
Pair

One pair of white cover plates for 6½" 2-way, LCR & twin-tweeter ceiling speakers.

## CPW-600 6½" Inwall Cover Plate

**ITEM**  
PAS04600      **U/M**  
Pair

One pair of white cover plates for 6½" inwall speakers.



---

# Replacement Speaker Grilles

## Thin-Bezel 10" Ceiling LCR Grille

**ITEM**  
1001-131031      **U/M**  
Each

Compatible with Proficient Signature 10" Ceiling LCR Speakers.

## Thin-Bezel 8" Ceiling Grille

**ITEM**  
1001-11801      **U/M**  
Each

Compatible with Proficient Signature & Protege 8" 2-Way, LCR & Twin-Tweeter Ceiling Speakers.

## Thin-Bezel 6½" Ceiling Grille

**ITEM**  
1001-11602      **U/M**  
Each

Compatible with Proficient Signature & Protege 6½" 2-Way, LCR & Twin-Tweeter Ceiling Speakers.

## Thin-Bezel 5¼" Ceiling Grille

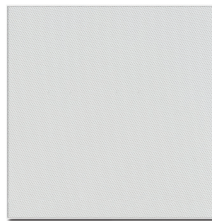
**ITEM**  
1001-11501      **U/M**  
Each

Compatible with Proficient Protege 5¼" Ceiling Speakers.

## Thin-Bezel 6½" Ceiling Grille

**ITEM**  
SRG-C6-SG      **U/M**  
Each

Square Grille for 6 ½" ceiling speakers



---

## Thin-Bezel 8" Inwall Grille

**ITEM**  
1001-21801      **U/M**  
Each

Compatible with Proficient Signature & Protege 8" Inwall Speakers.

## Thin-Bezel 6½" Inwall Grille

**ITEM**  
1001-21601      **U/M**  
Each

Compatible with Proficient Signature & Protege 6½" Inwall Speakers.



# Replacement Speaker Grilles



**Thin-Bezel 6½" Inwall LCR Grille** **ITEM** **U/M**  
 1001-22630 Each  
 Compatible with Proficient Signature & Protege 6½" Inwall LCR Speakers.

**Thin-Bezel 5¼" Inwall LCR Grille** **ITEM** **U/M**  
 1001-22530 Each  
 Compatible with Proficient Signature & Protege 5¼" Inwall LCR Speakers.



**Thin-Bezel 10" Inwall Sub Grille** **ITEM** **U/M**  
 1001-24105-2 Each  
 Compatible with Proficient Protege IWS105 10" Inwall Subwoofer.

**Thin-Bezel 10" Ceiling Sub Grille** **ITEM** **U/M**  
 1001-13111 Each  
 Compatible with Proficient Protege ICS11 10" Ceiling Subwoofer.



**AW830 Grilles** **WHT** **BLK** **U/M**  
 1001-42830 1001-42833 Pair  
 Compatible with AW830 Outdoor/Indoor Speakers.



**AW650 Grilles** **WHT** **BLK** **U/M**  
 1001-41650 1001-41653 Pair  
 Compatible with AW650 Outdoor/Indoor Speakers.

**AW525 Grilles** **WHT** **BLK** **U/M**  
 1001-41525 1001-41527 Pair  
 Compatible with AW525 Outdoor/Indoor Speakers.

**AW400 Grilles** **WHT** **BLK** **U/M**  
 1001-41400 1001-41403 Pair  
 Compatible with AW400 Outdoor/Indoor Speakers.

**AW600TT Grille** **WHT** **BLK** **U/M**  
 1001-42600 1001-42603 Each  
 Compatible with AW600TT Twin-Tweeter Outdoor/Indoor Speakers.



**AW500TT Grille** **WHT** **BLK** **U/M**  
 1001-42500 1001-42503 Each  
 Compatible with AW500TT Twin-Tweeter Outdoor/Indoor Speakers.



# PROFICIENT<sup>®</sup>

5919 Sea Otter Place, Suite 100 • Carlsbad, CA 92010 • 800.472.5555 • Fax 707.283.5901 • [proficientaudio.com](http://proficientaudio.com)

©2020 Nortek Security & Control, LLC. All rights reserved. Proficient<sup>®</sup> is a registered trademark of Nortek Security & Control, LLC.

**Rev E, 10/2020**

*Dolby, Dolby Atmos, and the double-D symbol are registered trademarks of Dolby Laboratories.*

*DTS, the Symbol, DTS and the Symbol together, DTS:X, and the DTS:X logo are registered trademarks or trademarks of DTS, Inc. in the United States and/or other countries.*

*DuPont and Kevlar are trademarks or registered trademarks of E.I. du Pont de Nemours and Company.*