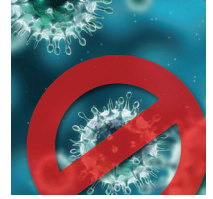


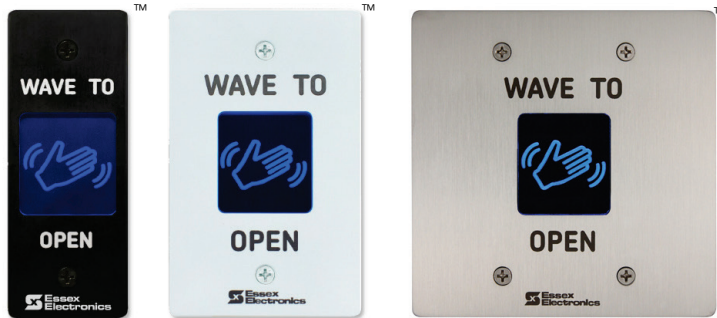
Touchless Switches

Hand-E-Wave™

Hand-E-Wave is a ruggedized touchless switch with advanced 24GHz Doppler radar technology. Ideal for use in public areas where sanitation is a concern including healthcare, education, commercial corporate and retail facilities, Hand-E-Wave's no touch activation reduces the spread of viruses, bacteria and infectious diseases. An optional manual override (HEWMO) is available for emergency egress applications.



Hand-E-Wave



HEW – 1B

HEW – 2W

HEW – 3S

- Power Requirements: 12–24VAC/DC*
- One DPDT Relay, 2A 30VDC Resistive, ½A 125VAC
- Field Selectable Timed or Toggle Output
- Adjustable Detection Zone: 2 to 24 inches
- Vandal Resistant 1/8" Stainless Steel faceplate
- Easy to Clean and Sanitize
- Developed and Manufactured in the U.S.A.
- Customization Options
- Visual and selectable On/Off Audio Feedback
- HEWMO adds fail safe to NC contacts and a manual override button with 0.5 to 60 second timer.

Part No.

Description

HEW – 1B	Narrow/Jamb, Hand-E-Wave™, Black Faceplate
HEW – 1S	Narrow/Jamb, Hand-E-Wave™, Stainless Faceplate
HEW – 2B	U.S. Single Gang, Hand-E-Wave™, Black Faceplate
HEW – 2S	U.S. Single Gang, Hand-E-Wave™, Stainless Faceplate
HEW – 2W	U.S. Single Gang, Hand-E-Wave™, White Faceplate
HEW – 3B	U.S. Double Gang, Hand-E-Wave™, Black Faceplate
HEW – 3S	U.S. Double Gang, Hand-E-Wave™, Stainless Faceplate
HEW – 3W	U.S. Double Gang, Hand-E-Wave™, White Faceplate
HEWMO – 1	Narrow/Jamb, Hand-E-Wave™, Stainless Faceplate with Manual Override
HEWMO – 2	U.S. Single Gang, Hand-E-Wave™, Stainless Faceplate with Manual Override
HEWMO – 3	U.S. Double Gang, Hand-E-Wave™, Stainless Faceplate with Manual Override
TWM	Two Wire Module (hardwired for retrofit two wire mechanical switch replacement)

The illuminated hand symbol changes from blue to green, when motion is detected in the detection zone.



HEWMO-2

Piezoelectric Touch Switches

The PEB Series are industrial grade, stainless steel, illuminated, Piezoelectric Touch switches designed to operate in various high use, harsh and vandal prone environments. Utilizing Essex Billion Cycle Switch Technology, the PEB Series features field selectable illumination. Brilliant red, vibrant green or no illumination can be selected for standby and switch activation status. The PEB Series is designed to control an automatic door, electric lock/strike or magnetic lock.

PEB Series

PEB Series



- Power Requirements: 12–24VDC*
- Two Outputs: 1 N/O, 1 N/C (2A 30VDC Resistive, ½A 125 VAC)
- IP 66 Rated - 40° C to +70° C, 100% Relative Humidity
- Adjustable Output Time: 1 to 40 seconds
- Dimensions: Single gang 4 ½" x 2 ¾" x 1 ¼" Narrow 4 ½" x 1 ¾" x 1 ¼"

Part No.

Description

Faceplate Graphics

PEB – 1S	Narrow Piezo Switch	"PUSH TO EXIT"
PEB – 1SO	Narrow Piezo Switch	"PUSH TO OPEN"
PEB – 2S	U.S. Single Gang Piezo Switch	"PUSH TO EXIT"
PEB – 2SEE	U.S. Single Gang Piezo Switch	"EMERGENCY EXIT"
PEB – 2SO	U.S. Single Gang Piezo Switch	"PUSH TO OPEN"
PEB – 2SBLANK	U.S. Single Gang Piezo Switch	No graphics



PEB – 1SO



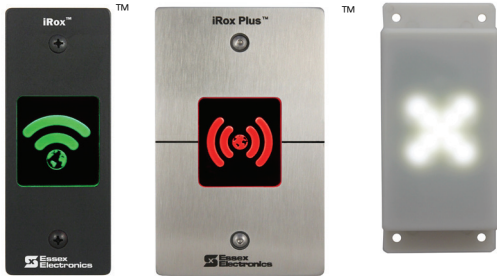
PEB – 2S

*Important Note: Essex REX devices will not operate with <11VDC. Backup power (i.e. UPS) is required for operation during a power interruption.

Smart Card Readers

iRox™ Series

iRox™ and iRox Plus™ are professional grade, heavy duty RFID smart card readers with Genuine HID Technology™. iRox readers feature epoxy encapsulated electronics in a recessed vandal and ligature resistant design. iRox reads iCLASS SE credentials including HID Seos™. iRoxPlus reads 13.56MHz HF credentials and 125kHz Proximity. iRox-T is an optimally tuned turnstile reader ideal for compact metal environments.



IRXO – 1B

IRXPO – 2S

IRXPTO
(Turnstile)

- iCLASS SE® (13.56MHz) or MultiCLASS SE® (13.56MHz and 125kHz) Frequency
- Field Selectable Wiegand or OSDP Secure Channel
- HID Mobile Access Options (BLE and NFC)
- 1/8" Stainless Steel Faceplate or no faceplate (iRox-T)
- IP 66 Rated, - 35° C to +65° C, 100% Relative Humidity
- 5 or 12VDC Field Selectable Input Voltage
- Current Draw: 90mA Standby, 300mA max
- Audio and Visual Feedback
- Dimensions: Narrow 4 1/2" x 1 3/4" x 3/4"
Single gang 4 1/2" x 2 3/4" x 3/4"
Turnstile 4 1/8" x 2 1/8" x 1"



iRox Wall Reader



Custom Graphics Available

Part No.

Description

IRXO – 1B	iRox™ Narrow OSDP/Wiegand Wall Reader with iCLASS SE® Black Faceplate
IRXO – 1S	iRox™ Narrow OSDP/Wiegand Wall Reader with iCLASS SE® Stainless Faceplate
IRXO – 2B	iRox™ U.S. Single Gang OSDP/Wiegand Wall Reader with iCLASS SE® Black Faceplate
IRXO – 2S	iRox™ U.S. Single Gang OSDP/Wiegand Wall Reader with iCLASS SE® Stainless Faceplate
IRXPO – 1B	iRox Plus™ Narrow OSDP/Wiegand Wall Reader with MultiCLASS SE® Black Faceplate
IRXPO – 1S	iRox Plus™ Narrow OSDP/Wiegand Wall Reader with MultiCLASS SE® Stainless Faceplate
IRXPO – 2B	iRox Plus™ U.S. Single Gang OSDP/Wiegand Wall Reader with MultiCLASS SE® Black Faceplate
IRXPO – 2S	iRox Plus™ U.S. Single Gang OSDP/Wiegand Wall Reader with MultiCLASS SE® Stainless Faceplate
IRXTO	iRox-T™ Turnstile Reader with iCLASS SE®
IRXTO – BLE	iRox-T™ Turnstile Reader with iCLASS SE® with HID Mobile Access (BLE)
IRXPTO	iRox-T™ Turnstile Reader with MultiCLASS SE®
IRXPTO – BLE	iRox-T™ Turnstile Reader with MultiCLASS SE® with HID Mobile Access (BLE)



SEOS

iRox Turnstile



125kHz Proximity Readers

RoxProx™ Series

RoxProx™ is a heavy duty 125 kHz Proximity Access Control reader with Genuine HID Technology™. Designed for interior and exterior environments. RoxProx features rugged metal construction, epoxy encapsulated electronics and a low profile, vandal and ligature resistant design.

- 125kHz Wiegand Proximity Reader with Genuine HID Technology™
- 1/8" Stainless Steel Faceplate
- 5 or 12VDC Field Selectable Input Voltage
- Current Draw: 50mA Standby, 150mA max
- IP 66 Rated - 40° C to +70° C, 100% Relative Humidity
- Dimensions: Mullion 4 1/2" x 1 3/4" x 3/4" Single gang 4 1/2" x 2 3/4" x 3/4"

Part No.

Description

PRX – 1	RoxProx™ Narrow Proximity Reader Stainless Faceplate, Blue Globe
PRX – 2	RoxProx™ Single Gang Proximity Reader Stainless Faceplate, Blue Globe
PRX – 1R	RoxProx™ Narrow Proximity Reader Stainless Faceplate, Red RFID
PRX – 2R	RoxProx™ Single Gang Proximity Reader Stainless Faceplate, Red RFID
PRX2 – 1B	RoxProx II™ Narrow Proximity Reader Black Faceplate, Blue Globe
PRX2 – 1S	RoxProx II™ Narrow Proximity Reader Stainless Faceplate, Blue Globe
PRX2 – 2B	RoxProx II™ Single Gang Proximity Reader Black Faceplate, Blue Globe
PRX2 – 2S	RoxProx II™ Single Gang Proximity Reader Stainless Faceplate, Blue Globe

Custom Graphics Available



RoxProx II



PRX-1



PRX2-1S



PRX2-2B

OEM Keypads

KTP Series

The KTP Series are virtually indestructible Keypads designed to interface with most OEM access control panels or automated control equipment. Built with Essex Piezoelectric Billion Cycle Switch Technology™, the KTP Series can be used in virtually any interior or exterior environment.

- Superior Performance: Switch technology tested over 1 Billion cycles.
- All Weather: IP66 Rated, -40° C to +70° C, 100% Relative Humidity



KTP Series



KTP 12 Pad 3x4

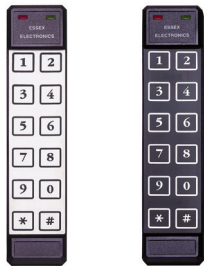
- Dimensions: 5 1/8" x 3 3/8" x 7/16"
- Current Draw: < 20 mA
- Mounting: Single gang, surface or flush
- Keypad Bezel: Stainless Steel (SN), Black (KN) or no Bezel (XX)

Part No.

- KTP – 103 – SN**
- KTP – 163 – SN**
- KTP – 4853 – SN**

Keypad Output

- 26 Bit Wiegand
- 8 Bit Word
- RS-485



KTP Thinline 2x6

- Dimensions: 7 1/8" x 1 3/4" x 3/4"
- Current Draw: < 20 mA, Illuminated: < 60 mA
- Mounting: Surface or mullion mount
- Keypad Overlay: Stainless Steel (SN) or Black Illuminated (LI)

Part No.

- KTP – 102 – SN**
- KTP – 162 – SN**

Keypad Output

- 26 Bit Wiegand
- 8 Bit Word

Combination Keypad/Card Readers

PiezoProx® and iSMART SE™

PiezoProx is a rugged dual technology access control reader which combines an Essex 3x4 Keypad with 125 kHz HID Proximity. iSMART features 13.56MHz iCLASS. Both PiezoProx and iSMART are designed for harsh or vandal prone environments where a dual method of identification is desired.



- Genuine HID Technology™
- IP66 Rated, -40° C to +70° C, 100% Relative Humidity
- Keypad Output: 26 Bit Wiegand (103) or 8 Bit Word (163)
- Keypad Bezel: Stainless Steel (SN) or Black (KN)
- Current Draw: < 80mA with LED's, < 35mA without LED's
- Mounting: Single gang switchbox or surface mount
- Dimensions: 7 1/4" x 3 3/8" x 1 1/2"

Part No.

- PPH – 103 – SN** PiezoProx® Reader – HID Proximity w/26 Bit Wiegand Keypad, Stainless Bezel
- PPH – 163 – SN** PiezoProx® Reader – HID Proximity w/8 Bit Word Keypad, Stainless Bezel
- ISH – 34 – SN** iSMART Reader – HID iCLASS with KI Series Multi Format Keypad, Stainless Bezel

Description



PiezoProx

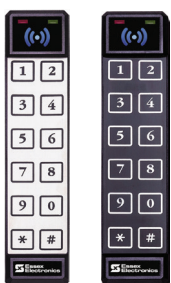


iSMART SE



T-Prox™

T-Prox is a dual technology access control reader which combines an Essex Thinline 2x6 Keypad with HID125 kHz Proximity. Suitable for all indoor and outdoor applications, T-Prox is specifically designed for mullion mount installations to provide a dual method of identification.



- Genuine HID Technology™
- IP66 Rated, -40° C to +70° C, 100% Relative Humidity
- Keypad Overlay: Stainless Steel (S) or Black Illuminated (I)
- Current Draw: < 30mA, Illuminated < 100 mA
- Mounting: Surface or mullion mount
- Dimensions: 7 1/8" x 1 3/4" x 3/4"

Part No.

- TPX – 26S** T-Prox Reader – Thinline 2x6 Keypad w/HID Proximity, Stainless Overlay
- TPX – 26I** T-Prox Reader – Thinline 2x6 Keypad w/HID Proximity, Black Illuminated Overlay

Description



T-Prox



Access Control Systems

- All Weather Keypad
- Request to Exit Input
- Keypad Programmable
- Piezoelectric Switch Technology
- Latching Output
- Anti-Tailgating
- Programmable Output Time
- Tamper Alarm
- Non-Volatile Memory

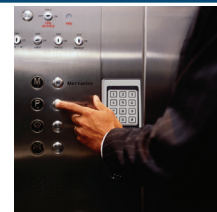
SKE-34/SKE-26



Multiple User, Self Contained, Access Control Keypad

- 500 User
- 12-24VDC In/Out
- 3 Programmable Outputs
- 1 SPDT Relay (2 amp at 24V max)
- 2 Auxiliary Open Collector Outputs (¼A)
- 3x4 Bezel: Stainless (S) or Black (K).
2x6 Overlay: Stainless (S) or Black Illuminated (I)

Part No.	Description
SKE – 34S	SKE-34, 3x4 Keypad Stainless
SKE – 34K	SKE-34, 3x4 Keypad Black
SKE – 26S	SKE-26, 2x6 Keypad Stainless
SKE – 26I	SKE-26, 2x6 Keypad Black
SKE – 34SE	SKE-34, 3x4 Keypad Stainless for Elevators The SKE-34SE is CSA Listed for Elevator Access Control (CSA B44.1/ASME 17.5)



SKE Elevator



SKE Commercial



K1 Series



All-In-One, Multi Format Keypad Reader (26 Bit Wiegand, 8 Bit Word, BCD, Serial ASCII)

Field configurable as an OEM Compatible Reader or 500 User Keyless Entry System (*may require external relays)

- 5VDC or 12-24VDC In/Out
- 3 Programmable D.C. Outputs
- 3x4 Bezel: Stainless (S) or Black (K).
2x6 Overlay: Stainless (S) or Black Illuminated (I)

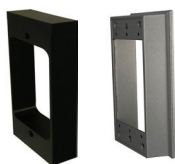
Part No.	Description
K1 – 34S	K1, 12 Pad 3x4 Stainless
K1 – 34K	K1, 12 Pad 3x4 Black
K1 – 26S	K1, Thinline 2x6 Stainless
K1 – 26I	K1, Thinline 2x6 Black

K1 Series



Accessories

Narrow Spacer Rings, Extension Back Box and Ligature Bezel



The Surface Mount Spacer Ring and Extension Back Box are designed to simplify product installation.

- Spacer ring: Black plastic or powder coat aluminum
- Extension Back Box: Grey powder coat aluminum

Part No.	Description
SP – 1	Black Plastic Spacer Ring for narrow readers & switches
SR – 1	Black Aluminum Spacer Ring for narrow readers & switches
BAK BOX – SGE	Grey Extension Back Box for single gang readers and switches
LRB – 2	Ligature Resistant Bezel for single gang readers

Stainless Spy Proof Housing



The Stainless Steel Spy Proof Housing provides keypad illumination and serves to limit the view of an unwelcome onlooker.

- 5 or 12VDC Field Selectable
- Long Lasting LED's

Part No.	Description
SH – 34S	Non Illuminated Spy Proof Housing for 3x4 Keypads
SH – 34SI – 12	Illuminated Spy Proof Housing for 3x4 Keypads
SH – 34WK	Illuminated, Wide Black Spy Proof Housing for iSMART SE™ and Piezoprox®

Stainless Back Box



The Stainless Steel Back Box solves various installation challenges. For use with 3x4 keypads and single gang iRox, RoxProx readers, PEB and HEW switches.

- 5 3/8" x 3 5/8" x 1/2" to 1 3/4"
- Conduit knockout

Part No.	Description
BAK BOX – SGS	Stainless Steel Single Gang Angle Mount Back Box

