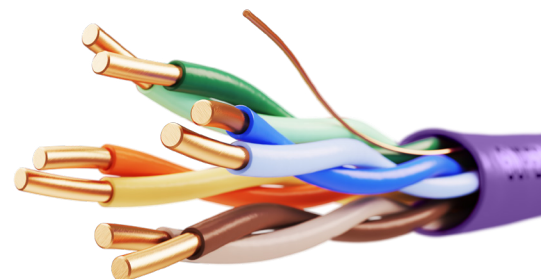


PowerWise® for Extended Distance: The Facts

Do you think there are standards for extended distance cables?

The answer is no!

- Cable performance and future proof depend on too many variables: distance, source, end point and more:
 - Are cables direct attached?
 - Are there 2, 3 or 4 connectors per channel?
 - What kind of plug or jack is involved?
 - What's the patch cord type and length?
 - What's the cable type and length?
- One small change to any of those elements can impact the future performance of an installation in a big way. What works today won't necessarily work tomorrow.
- Heat generated by PoE also affects performance and the distance cables can be run. Depending on the installation, heat spike zones can appear.
 - Type 3 or 4 links will work shorter than Type 1 or 2
 - This also impacts how future proof an installation is
- The bottom line is, for all these reasons, Category 6A won't automatically go farther than Cat 6 or Cat 5e cables.



PowerWise® for Extended Distance: The Facts

Do you believe that many cables offer independently verified performance at distances longer than 100 meters?

No! But one that does is PowerWise® for Extended Distance - both 1G and 10G 4PPoE.

- The cable UL verified for extended distance applications
- 1G 4PPoE rigorously tested for validated performance up to 160 meters
- Compliant to IEEE 802.3bt standard for Type 1 to Type 4 PoE
 - Used Bit Error Rate (BER), the only valid test to check how far a signal is eligible for any device
 - Tests were performed at ambient temperature (Type 1 & 2) and LP temperature of the cable (Type 3 & 4)

PowerWise® Extended Distance Maximum Supported Lengths

Direct Attach Application	Transmission/Standard	PowerWise® 1G		PowerWise® 10G	
		BER @ Ambient 20°C Type 1 & 2	BER @ Max 70.1°C Type 3 & 4	BER @ Ambient 20°C Type 1 & 2	BER @ Max 70.1°C Type 3 & 4
Data & Power (Bandwidth & Speed)	Max Distance @ 100 Mb/s	200 m	140 m	195 m	190 m
Data & Power (Bandwidth & Speed)	Max Distance @ 1 Gb/s	160 m	140 m	155 m	145 m
Data & Power (Bandwidth & Speed)	Max Distance @ 10 Gb/s	120 m	105 m	110 m	105 m

Direct Attach ¹ Camera Type	PoE	Bandwidth	Latency	PowerWise® 1G	
				Max Distance	
Any IP Security Camera	15 W	2 Mbps	100%	305 m	
Any IP Security Camera	30 W	< 10 Mbps	100%	244 m	
Any IP Security and Any PTZ Camera	60 W	100 Mbps	100%	200 m	



PowerWise[®] for Extended Distance: The Facts

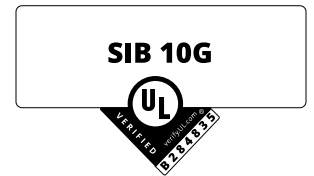
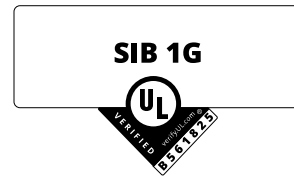
Do you assume lots of cables come with an extended warranty?

Once again, no! But PowerWise does!

- PerformaWise[™] Warranty: up to 40 years
- For PowerWise[®] premises copper cables and PowerWise[®] premises fiber optic network installations
- Approved applications: LED lighting, security cameras, security devices or air valve controls
- Conforming substantially to the ANSI/TIA-568 series industry specifications

When it comes to connectivity in any environment, PowerWise PoE Cables for Extended Distance check all the boxes for performance and reliability:

- More than capable of connecting all your IoT devices
- Best price-to-performance ratio in the industry
- Cables are lab-tested and UL-verified for guaranteed performance up to 160 meters
- Warrantied for up to 40 years



PowerWise® for Extended Distance: The Facts

PRODUCT NAME

PART NUMBERS

PowerWise® 10G 4PPoE
CMP-LP

PW6H-H72-xB

PowerWise® 1G 4PPoE
CMR-LP/CMP-LP

PW52-H46-x5, PW52-H72-x5,
PW52-H46-x8, PW52-H72-x8

PowerWise® 1G 4PPoE Indoor/Outdoor
CMR/CMX Sunlight Resistant

PW52-H46-E1

PowerWise® 1G 4PPoE Indoor/Outdoor
CMR/CMX

PW52-H46-x1

PowerWise® 1G 4PPoE
CMR-LSHF

PW52-H46-xM, PW52-H72-xM

PowerWise® 1G 4PPoE with FEP Jacket
CMP-LP Indoor/Outdoor

PW52-H72-xP

