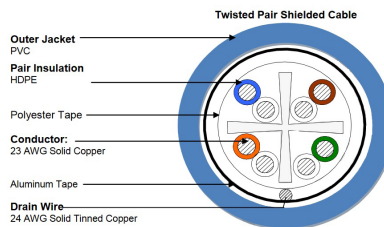


COPPER CABLES

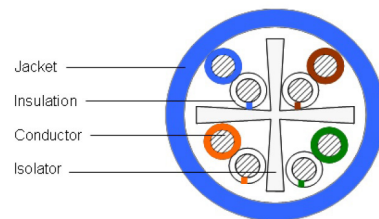
SOLUTION	CABLE	
	CMR	CMP
OCC-5GS – CATEGORY 6 SHIELDED	OCC-FTP64R-xx	OCC-FTP64PLM-xx
OCC-5G – CATEGORY 6 HIGH-PERFORMANCE UTP	OCC-U64HR-xx	OCC-U64HPLM-xx
OCC-2.5G – CATEGORY 6 STANDARD UTP	OCC-UE64R-xx	OCC-UE64PLM-xx

*xx=COLOR: 01=Yellow; 02=Black; 03=Red; 04=Green; 05=Blue; 06=Data Grey; 07=White; 08=Violet; 09=Orange

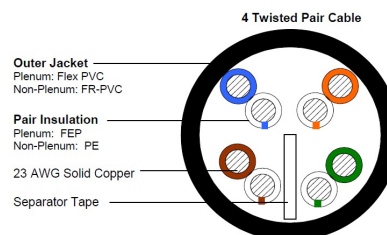
OCC-5GS



OCC-5G - HIGH-PERFORMANCE



OCC-2.5G - STANDARD PERFORMANCE



KMJ JACKS

DESCRIPTION	OCC PART #
OCC-5GS – CATEGORY 6 SHIELDED	KMJA602S
OCC-5G – CATEGORY 6 HIGH-PERFORMANCE UTP	KMJA6xx

*xx=COLOR: 00=Electrical Ivory; 01=Office White; 02=Black; 03=Red; 04=Green; 05=Blue; 06=Grey; 07=White; 08=Orange; 09=Yellow; 10=Purple; 11=Brown; 12=Bright White
Compatible with OCC-5G & OCC-2.5G Solutions.



KMJ JACK FEATURES

- » Meets ANSI/TIA-568.2-D Category 6 specifications
- » Supports 1, 2.5, 5GBASE-T Ethernet
- » Three termination methods provide for simple, consistent, reliable terminations
- » Accommodates 22-26 AWG conductors
- » Modular Interface: 750 mating cycles
- » UL 1863
- » Available in multiple colors

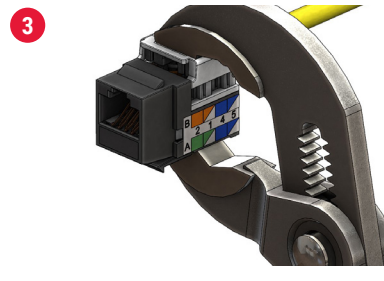
UNSHIELDED JACKS OFFER THREE TERMINATION OPTIONS



110 IMPACT TOOL



PA8109 TERMINATION TOOL

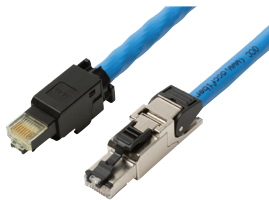


STUFFER CAP TERMINATION METHOD

FIELD TERMINABLE PLUGS

DESCRIPTION	OCC PART #
OCC-10GS – CATEGORY 6A SHIELDED	OCCUFP6A
OCC-10G – CATEGORY 6A UTP	OCCSFP6A

Backwards compatible with Category 5e/6.



- » ANSI/TIA-568.2-D Category 6A
- » IEC 60603-7-41
- » Supports IEEE 802.3an 10GBASE-T
- » Supports IEEE 802.3bt PoE++
- » Accommodates 22-24 AWG conductors
- » Modular Interface: 750 mating cycles
- » 1000 VDC Dielectric Withstand
- » Current Rating (50°C): 1A
- » 500MΩ Insulation resistance
- » Temperature range: -40°C to 70°C
- » Temperature range: -40°C to 85°C (shielded version)
- » UL 1863
- » UL 2043 Certification for use in Air Handling Spaces



APPLICATIONS

- » Wireless Access Points
- » IP Security Cameras
- » IP Access Control
- » IP Audio
- » Building Automation Devices
- » Data Center Direct Attach Cable Assemblies
- » Transition Cables

PATCH PANELS

DESCRIPTION	OCC PART #
OCC-5GS – CATEGORY 6 SHIELDED	DCC2488/110SIX-S DCC4888/110SIX-S
OCC-5G – CATEGORY 6 HIGH-PERFORMANCE UTP	DCC2488/110SIX DCC4888/110SIX

Compatible with OCC-5G & OCC-2.5G Solutions.



PATCH CORDS

DESCRIPTION	OCC PART #
OCC-5GS – CATEGORY 6 SHIELDED	PCSIXSxxByy
OCC-5G – CATEGORY 6 HIGH-PERFORMANCE UTP	PCSIXxxByy

xx = LENGTH

yy = COLOR: 01=Yellow; 02=Black; 03=Red; 04=Green; 05=Blue; 06=Data Grey; 07=White; 08=Orange; 09=Brown; 10=Purple.

Compatible with OCC-5G & OCC-2.5G Solutions.

HEADROOM GUARANTEE TABLE

CATEGORY 6	OCC-2.5G (Typical)	OCC-2.5G (Min. Margin)	OCC-5G (Typical)	OCC-5G (Min. Margin)	OCC-5GS (Typical)	OCC-5GS (Min. Margin)
INSERTION LOSS	11%	5%	12%	8%	8%	5%
NEXT	6	4	8	6	8	6
PSNEXT	7	5	8	7	8	7
ACR	8	6	9	7	9	7
PSACR	8	7	9	8	9	8
ACR-F (ELFEXT)	10	8	12	10	12	9
PSACR-F (PSEFFEXT)	12	9	12	12	12	9
RL	4	3	5	5	5	3

OCC-5GS Example: OCC guarantees a minimum of 3dB headroom above the CAT6 standard for Return Loss values up to 250MHz. Many users of OCC-5GS typically experience performance of 5dB above the Return Loss values in the standard. CAT6 Standard RL Spec at 250MHz is 8dB. OCC Guarantees RL of 11dB. Many users typically experience 13dB.

OCC ROANOKE, VA

Corporate Headquarters and Fiber Optic Cable Manufacturing Facility
5290 Concourse Drive
Roanoke, VA 24019 USA
540.265.0690 or 800.622.7711

OCC DALLAS, TX

Harsh Environment and Specialty Connectivity Manufacturing Facility
1700 Capital Avenue, Suite 150
Plano, TX 75074 USA
972.509.1500 or 877.509.1500

OCC ASHEVILLE, NC

Enterprise Connectivity Manufacturing Facility
33 Superior Way
Swannanoa, NC 28778 USA
828.298.2260 or 800.622.7711



VISIT US AT
OCCFIBER.COM