

Engineering Specification

Job Name _____

Contractor _____

Job Location _____

Approval _____

Engineer _____

Contractor's P.O. No. _____

Approval _____

Representative _____

Tag _____

FD-370

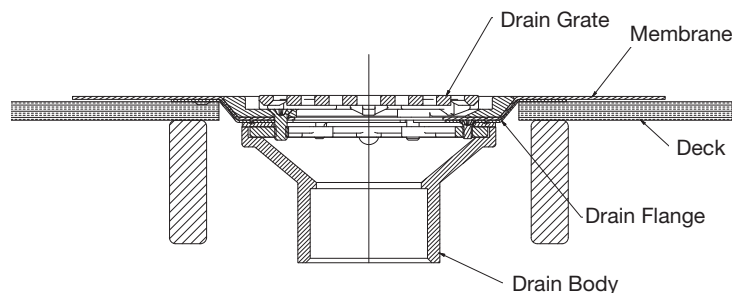
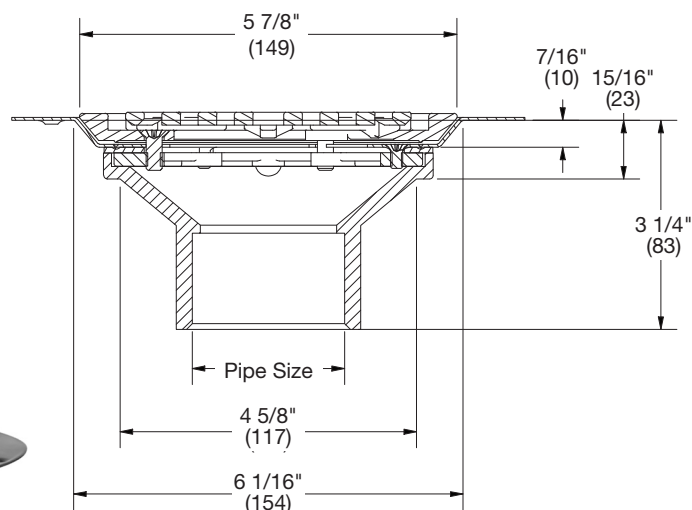
Wood Deck Drain

Specification

Watts FD-370 epoxy coated wood deck drain with 5"(127) diameter heel proof aluminum grate and surface membrane clamp, recessed mounting flange, and 2"(51) ABS socket outlet.

Options		
Suffix	Description	
-6	Vandal Proof	<input type="checkbox"/>

Load Rating	Free Area Sq. In.
LD	8



Typical Installation

NOTICE

The load classifications are in accordance with the American National Standard ASME A112.21.1M ASME Ratings are as follows:
LD Safe Live Load under 2000 lbs. (0-900 kg)
The above categories are given as a guide only. Please consult factory.

NOTICE

The information contained herein is not intended to replace the full product installation and safety information available or the experience of a trained product installer. You are required to thoroughly read all installation instructions and product safety information before beginning the installation of this product.

Watts product specifications in U.S. customary units and metric are approximate and are provided for reference only. For precise measurements, please contact Watts Technical Service. Watts reserves the right to change or modify product design, construction, specifications, or materials without prior notice and without incurring any obligation to make such changes and modifications on Watts products previously or subsequently sold.



USA: T: (800) 338-2581 • Watts.com

Canada: T: (888) 208-8927 • Watts.ca

Latin America: T: (52) 55-4122-0138 • Watts.com

ES-WD-FD-370 2233

© 2022 Watts