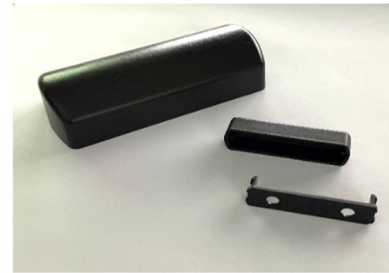


Installation Instructions

Kit Information

MINIBRNP
PROSIXMINI2 Brown Cover &
Magnet Kit
(Pack of 10)



MINIBLKP
PROSIXMINI2 Black Cover &
Magnet Kit
(Pack of 10)

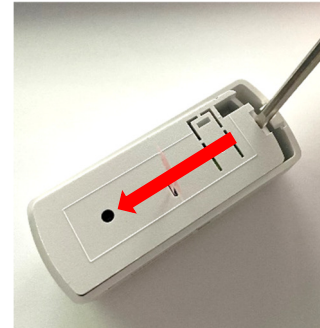
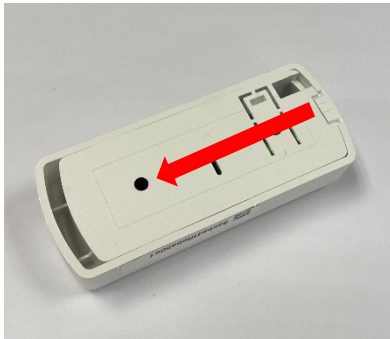
MINIMAGBRN
PROSIXMINI2 Brown Magnet Kit
(Pack of 10)



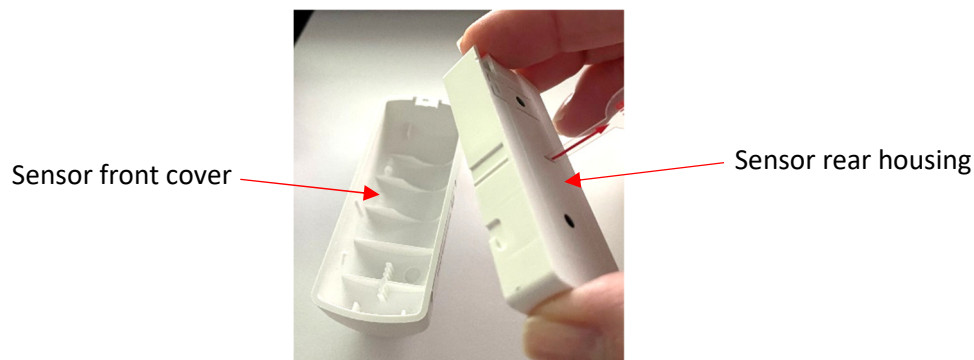
MINIMAGBLK
PROSIXMINI2 Black Magnet Kit
(Pack of 10)

Replacing the PROSIXMINI2 Cover & Magnet Housing

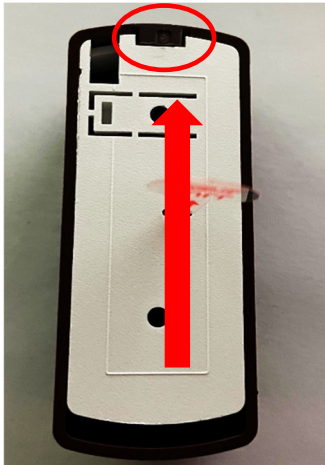
1. To remove the sensor front cover: use your thumb to push down and slide the rear housing in the direction as shown OR use a small screwdriver to unlatch the rear housing as shown. Use caution if using the screwdriver to avoid injury.



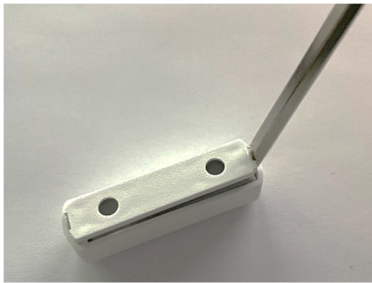
2. Separate the white sensor rear housing from the front cover. **Do not remove the sensor components from the rear housing.**



3. Insert the white sensor rear housing into the new brown or black front cover. Be sure to line up with the notch as shown circled in red, then push up to lock into place until it clicks. (If using a screwdriver, exercise caution to avoid injury.)

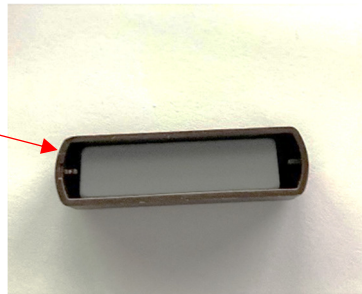


4. Using caution, remove the white magnet back cover using a small screwdriver as shown.
5. Remove the magnet from the front cover (using a steel screwdriver will make removal easier).

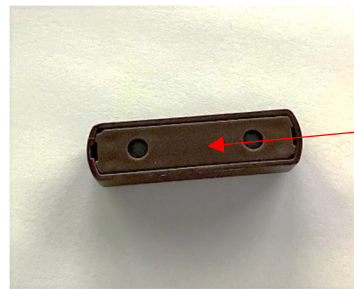


6. Insert the magnet into the new brown or black front cover. Align the magnet rear housing with the front cover and press firmly until two clicks are heard.

Magnet front cover



Magnet rear housing



7. Proceed with the mini door/window sensor installation. If an additional magnet is needed, order MINIMAGBRN (brown) or MINIMAGBLK (black).



R800-26852A 4/21 Rev A

resideo

2 Corporate Center Drive, Suite 100
P.O. Box 9040, Melville, NY 11747
© 2021 Resideo Technologies, Inc.
www.resideo.com