



resideo

V-Plex[®]
The wiring solution
that saves time
and money
Addressable Technology



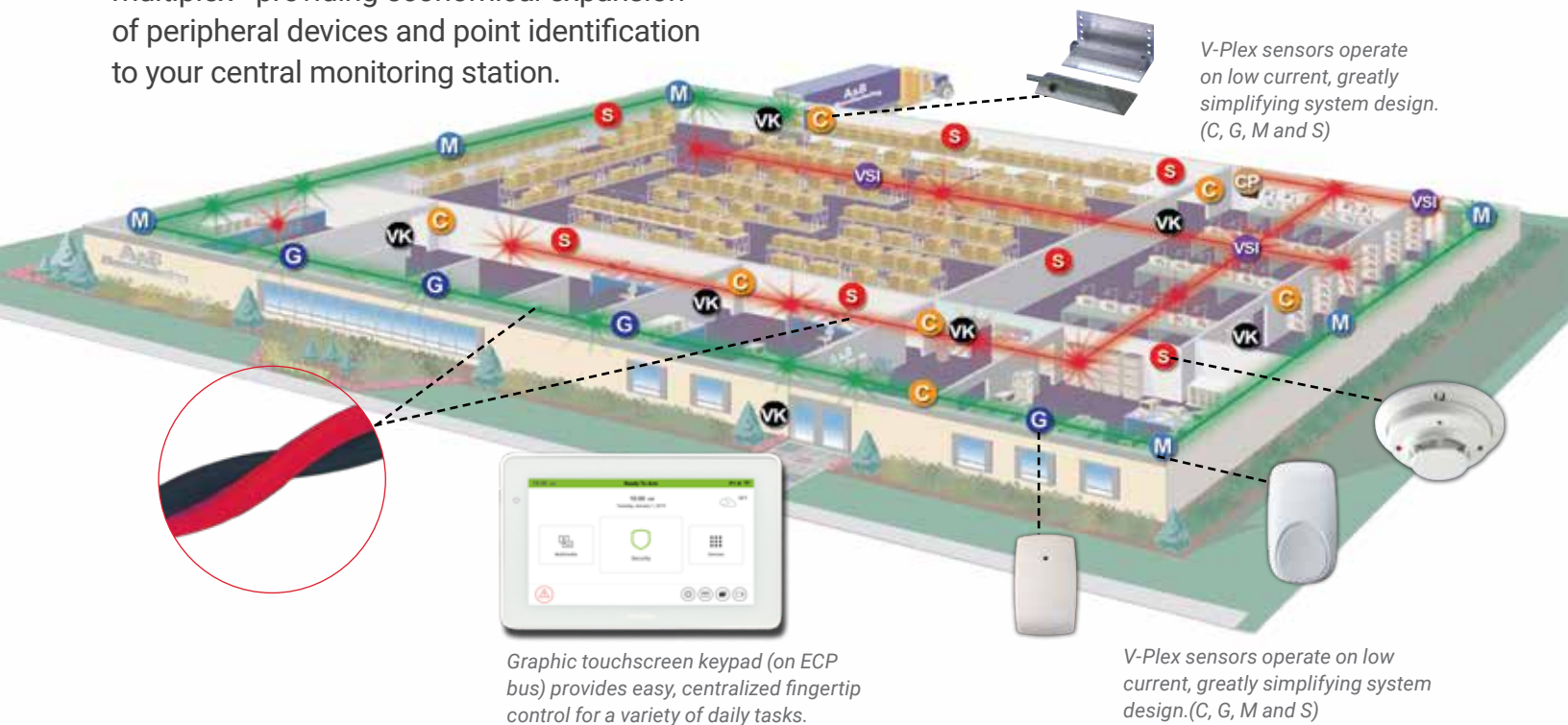
The V-Plex[®] Advantage

The Industry's Leading Addressable Technology

V-Plex is the polling loop technology that literally defines price and performance on a simple pair of wires.

By using two wires instead of four, V-Plex offers significant advantages over “home run” wiring or the conventional four-wire multiplex—providing economical expansion of peripheral devices and point identification to your central monitoring station.

- G** Glassbreak Detector
- M** Motion Detector
- CP** Control Panel
- VK** VISTAKEY[®]
- VSI** VSI V-Plex Short Loop Isolator
- C** Contact
- S** Smoke Detector



V-Plex sensors operate on low current, greatly simplifying system design. (C, G, M and S)

Graphic touchscreen keypad (on ECP bus) provides easy, centralized fingertip control for a variety of daily tasks.

V-Plex sensors operate on low current, greatly simplifying system design. (C, G, M and S)

Benefits

Reduced Costs

Since each V-Plex sensor can be installed using two wires for power and data—including existing wiring in many cases—costs are substantially reduced.

Reduced Power Consumption

V-Plex devices draw minimal amounts of current, minimizing the need for auxiliary power supplies.

Fast, Accurate Identification and Response

Point ID allows you to quickly and easily pinpoint the source of alarm or trouble from the keypad and communicate the information to the proper authorities—and lets you bypass protection at any specific point.

Reduced Time and Labor

V-Plex offers a labor and time-saving maintenance feature that gives you the ability to diagnose and pinpoint defects. As a result, installation and service professionals can arrive at the

site already knowing the exact location of the problem. Service calls become much more efficient, saving you the time and labor costs associated with repeat visits.

Reduced Maintenance Costs

V-Plex devices continually monitor functions displayed at the keypad. All issues are stored in the local event log and reported to a monitoring station. This drastically reduces system maintenance costs when annual tests or inspections are performed.

V-Plex products do not require batteries. This eliminates truck rolls for replacements.

The Resideo V-Plex addressable technology offers many new and exciting innovations while fully supporting existing addressable loop products. Efficiencies in installation and reliability add up quickly to improve your bottom line. Begin experiencing the V-Plex advantage today!

ACCESSORIES



DT8050A-SN
V-Plex® Dual Tec®
Motion Sensor with
Anti-Mask

- Dual motion sensor (PIR/microwave)
- 50' (15m) mirror optic
- Anti-mask feature notifies user if sensor is masked



IS3050A-SN
V-Plex Passive
Infrared Motion
Sensor with Anti-Mask

- PIR motion sensor
- 50' (15m) mirror optic
- Anti-mask feature notifies user if sensor is masked



5193SD/5193SDT
V-Plex Photoelectric
Smoke Detector

- 5193SDT features (135°F/57°C) heat detector
- Easy installation and no tools necessary for cleaning



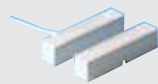
FG1625SN
V-Plex FlexGuard®
Glassbreak Detector

- FlexCore™ Signal Processor
- Selectable sensitivity
- Easy installation with FG-701 Tester
- No minimum range
- 25' (9.6m) max range



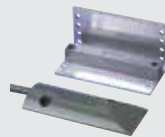
4191SN-WH
V-Plex Recessed
Contact

- 1/2" (12.7mm) diameter case
- Standard gap: 7/8" (22mm)
- Steel door adapter available (4191WA)



4939SN
V-Plex Addressable
Surface Mount
Contact

- Snap on cover to conceal mounting screws
- Standard gap: 1.25" (32mm)
- 5' (1.5m) CL II jacketed cable
- Available in white, brown and gray



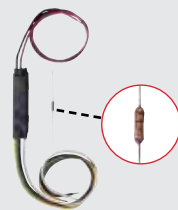
4959SN
V-Plex Addressable
Overhead Door
Contact

- Rugged aluminum housing and adjustable L bracket type magnet
- Standard gap: 2" (51mm)



269SN
V-Plex Holdup Switch

- Fully supervised
- Reset key for testing and reset of alarm
- Stainless steel protective cover



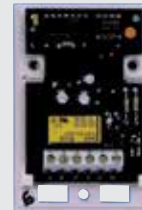
4193SN/4193SNP
V-Plex Two-Zone
Expander

- Makes any hardwired device V-Plex ready
- Built-in serial number for addressing
- One supervised, one unsupervised zone



4190SN
V-Plex Two-Zone
Expander Module

- Left Zone-EOLR supervised, open or closed circuit sensors
- Right Zone-unsupervised, closed circuit sensors



4101SN
V-Plex Single Output
Relay Module

- Form C contacts rated at 2A, 28V AC or DC with supervision
- One Class B EOLR supervised auxiliary input zone



4208SNF
V-Plex Universal Class
A & Class B Expander
Module

- Provides up to six Class B supervised zones and converts two panel zones to Class A supervised zones
- Powered from addressable loop or DC power supply
- Addressing via DIP switch



4208SN
V-Plex Eight-Zone
Expander Module

- Dip-switch and serial number polling
- Supports up to 8 Class B zones



4209U
V-Plex Group Zoning
Module

- 4-Zone, 2-Wire Smoke Detector Interface
- Streamlines large or expanded system installation

VISTAKEY V-Plex® Single Door Access Control Module



Now, you can add access control to VISTA® light commercial security systems. VistaKey maximizes security investments by integrating access control, intrusion and fire detection into a single system. You can offer your customers 1 to 15 doors of seamless integration, and a unique combination of security and access control features:

- Arms and disarms security system with access card
- Connects conveniently to the V-Plex polling loop
- Tracks employee door entry and locks/unlocks doors on schedule
- Restricts access based on job function, time or location
- Records events to the VISTA event log; printer optional

VPLEX-VSI V-Plex Short Isolator



- Detects and isolates polling loop branches with complete or resistive shorts, and overload or defective polling loop devices on initial power up
- Can be used to isolate burglary devices from fire devices, increasing life safety and protection
- LED indicator reduces troubleshooting time and maintenance costs
- Powered directly from the V-Plex two-wire polling loop
- Can be placed on any major or minor branch in any configuration on the polling loop

4297 V-Plex Polling Loop Driver and Isolator



- Adds additional polling loop current drive power for large installations
- Provides UL driven requirement to isolate burglary products from fire products
- Power via the control panel auxiliary 12V output

For more information

resideo.com/pro



For more information
resideo.com

Resideo Technologies, Inc.

2 Corporate Center Drive,
Suite 100
P.O. Box 9040
Melville, NY 11747
1-800-645-7492

L/VPLEXBR/D | AF | 05/22
© 2022 Resideo Technologies, Inc.
All rights reserved.
The Honeywell Home trademark
is used under license from
Honeywell International Inc.
These products are manufactured
by Resideo Technologies,
Inc. and its affiliates.