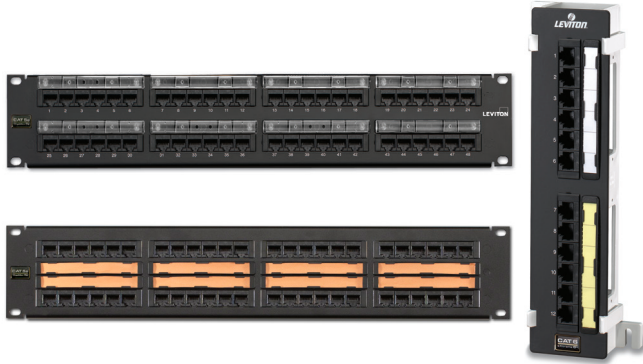


## Cat 5e Flat 110-Style Patch Panels and Patch Block

### APPLICATION

Leviton Cat 5e Flat 110-Style Patch Panels and Patch Blocks are ideal for modular cross connection and available in a multitude of port densities to meet the needs of high-speed data applications. Craft-friendly 110 punchdowns on the rear of the panel make installation easy.



### SPECIFICATION

Patch panels shall meet or exceed the requirements for channel- and component-level performance as described in ANSI/TIA-568.2-D Category 5e standards, as well as the Class D requirements described in ISO/IEC 11801. The panels shall feature both T568A and T568B wiring configurations, white IDC 110-punchdown modules, mounting standoffs for cable management bars, and color-coded front window labeling. The panels shall have universal T568A and T568B wiring card for terminations. The panels shall be made of 14-gauge steel, and shall have a black painted finish with white silk-screening. The plastic elements shall be fire retardant with a UL flammability rating of 94V-0. Panels shall be offered in 12-, 24-, 48-, and 96-port configurations as well as 89D 12-port configuration for wall-mount applications. Patch panel shall be configured with six port modules. The 110 termination on the rear of the panel shall follow normal installation color sequence (blue, orange, green, brown) from left to right. The panels shall exceed IEEE 802.3bt standard up to 0.5 amps per conductor (100 watts) continuously.

### COUNTRY OF ORIGIN

USA

### FEATURES

- Patented Retention Force Technology protects tines from damage and increases system longevity
- Craft-friendly installation
- Universal T568A and T568B wiring cards for 110-style IDC terminations
- Color-coded front labeling for easy port identification (ANSI/TIA-606-C compliant)
- Terminates 26-22 gauge solid conductors
- Centralized labeling (available on 48-port) promotes greater visibility of labels when patch cords are routed into horizontal cable management above and below the patch panel
- Capable of multiple re-terminations
- Panel available with patented magnifying lens label holder for easy reading
- Will exceed IEEE 802.3bt standard up to 0.5 amps per conductor (100 watts) continuously
- ETL verified to meet the IEC 60512-99-002 standard for support of IEEE 802.3bt Type 4 PoE (90-watt) applications

### DESIGN CONSIDERATIONS

- Mounts on 19-inch equipment racks
- Panel offered in 12-, 24-, 48-, 96-port configurations and 12-port U89 Block for wall-mount applications
- Connector modules are in groups of six
- Includes rear cable management bars
- Use star washers for grounding in rack-mount installations

### STANDARDS COMPLIANCE

- ANSI/TIA-568.2-D (Cat 5e)
- ISO/IEC 11801-1 (Class D)
- ANSI/TIA-1096-A (formerly FCC Part 68)
- IEC 60512-99-002
- cULus Listed
- IEEE 802.3bt PoE Type 1 (15.4 Watts) formerly 802.3af, Type 2 (30 Watts) formerly 802.3at, Type 3 (60 Watts), Type 4 (90 Watts)
- Cisco UPoE (60 Watts), UPoE+ (90 Watts)
- Power over HDBaseT™ PoH (95 Watts)

### WARRANTY INFORMATION

For a copy of Leviton product warranties, visit [www.leviton.com/warranty](http://www.leviton.com/warranty).

### ELECTRONIC FILES

For CAD files, typical specs, or technical drawings (.DXF, .DWG), visit [www.leviton.com](http://www.leviton.com).

#### Leviton Network Solutions

2222 - 222nd St. SE  
Bothell, WA 98021-4416

tel 1-800-824-3005  
tel +1-425-486-2222  
[appeng@leviton.com](mailto:appeng@leviton.com)  
[www.leviton.com](http://www.leviton.com)

#### Asia / Pacific

T +1.631.812.6228  
E [infoasean@leviton.com](mailto:infoasean@leviton.com)

#### Europe

T +44.0.1592.772124  
E [customerserviceeu@leviton.com](mailto:customerserviceeu@leviton.com)

#### Canada

T +1.514.954.1840  
E [pcservice@leviton.com](mailto:pcservice@leviton.com)

#### Mexico

T +52.55.5082.1040  
E [lsmarketing@leviton.com](mailto:lsmarketing@leviton.com)

#### Caribbean

T +1.954.593.1896  
E [infocaribbean@leviton.com](mailto:infocaribbean@leviton.com)

#### Middle East & Africa

T +971.4.247.9800  
E [lmeinfo@leviton.com](mailto:lmeinfo@leviton.com)

#### China

T +852.2774.9876  
E [infochina@leviton.com](mailto:infochina@leviton.com)

#### South Korea

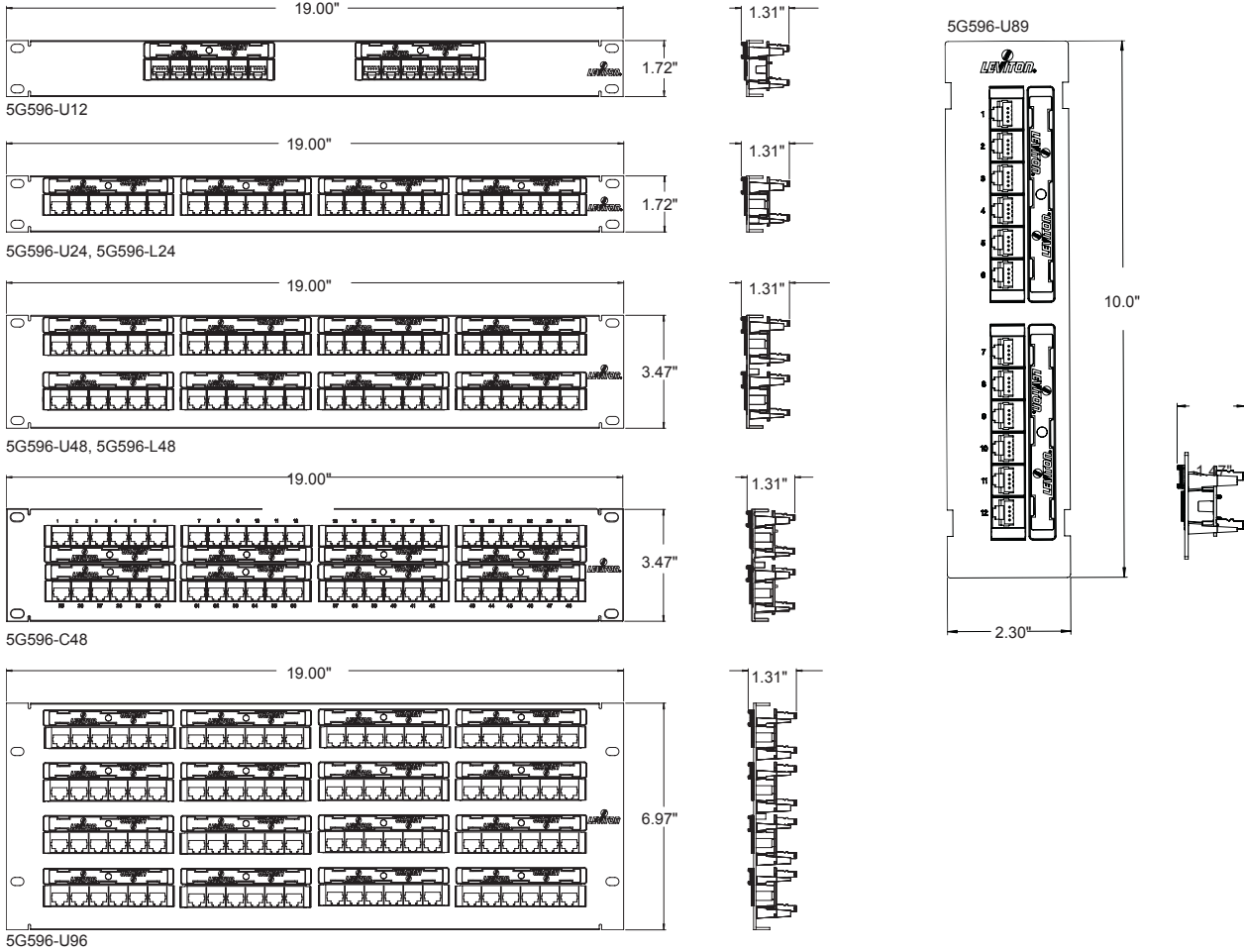
T +82.2.3273.9963  
E [infokorea@leviton.com](mailto:infokorea@leviton.com)

#### Colombia

T +57.1.743.6045  
E [infocolombia@leviton.com](mailto:infocolombia@leviton.com)

**PHYSICAL SPECIFICATIONS**

Dimensions: See below  
 Capacity: 12-, 24-, 48-, or 96-port, 12-port Patch Block, U89 Universal  
 Materials: 14-gauge steel, painted black, PCB and plastic components are rated UL 94V-0



**5G596-xxx**

**PART NUMBERS**

Description	Part No.
Cat 5e Flat 110-Style Patch Panel, 12-port, 1RU	5G596-U12
Cat 5e Flat 110-Style Patch Panel, 24-port, 1RU	5G596-U24
Cat 5e Flat 110-Style Patch Panel with magnifying lens label holder, 24-port, 1RU	5G596-L24
Cat 5e Flat 110-Style Patch Panel, 48-port, 2RU	5G596-U48
Cat 5e Flat 110-Style Patch Panel, 48-port, 2RU, Centralized Labeling	5G596-C48
Cat 5e Flat 110-Style Patch Panel with magnifying lens label holder, 48-port, 2RU	5G596-L48
Cat 5e Flat 110-Style Patch Panel, 96-port, 4RU	5G596-U96
Cat 5e Flat 110-Style Patch Block, 12-port	5G596-U89



<b>Leviton Network Solutions</b> 2222 - 222nd St. SE Bothell, WA 98021-4416	<b>Asia / Pacific</b> T +1.631.812.6228 E infoasean@leviton.com	<b>Canada</b> T +1.514.954.1840 E pcservice@leviton.com	<b>Caribbean</b> T +1.954.593.1896 E infocaribbean@leviton.com	<b>China</b> T +852.2774.9876 E infochina@leviton.com	<b>Colombia</b> T +57.1.743.6045 E infocolombia@leviton.com
tel 1-800-824-3005 tel +1-425-486-2222 appeng@leviton.com www.leviton.com	<b>Europe</b> T +44.0.1592.772124 E customerserviceeu@leviton.com	<b>Mexico</b> T +52.55.5082.1040 E lsamarketing@leviton.com	<b>Middle East &amp; Africa</b> T +971.4.247.9800 E lmeinfo@leviton.com	<b>South Korea</b> T +82.2.3273.9963 E infokorea@leviton.com	