

Installation Instructions for Replacement MD-1243 and MD-1244 Microphone

This document applies to four kits:

- **RPL-MD-1243** and **RPL-MD-1244**: for non-Touch Screen models ending in -C, for example TX3-1000-8U-C
- **RPL-MD-1243-TOUCH** and **RPL-MD-1244-TOUCH**: for Touch Screen models ending in -C, for example TX3-TOUCH-F15-C

The microphones **MD-1243** and **MD-1244** are identical in terms of installation and wiring.

Each kit consists of the following parts:

- replacement microphone circuit board with adhesive strips on flat side
- wiring harness and terminal block

You will also need the following tools:

- Screwdriver or a utility knife
- A multimeter probe

To install the microphone, you must perform the following steps:

- A. Shut down the unit and disconnect power**
- B. Remove the old microphone**
- C. Attach the new microphone to the door**
- D. Connect the wiring harness to the lobby controller board**

Details on how to perform these steps are in the following pages.

A. Shut down the unit and disconnect power

If you are installing the replacement microphone on TX3 Touch Screen, it is essential that you follow the proper shut down procedure.

Shut down the TX3 Touch Screen

1. At the Touch Screen terminal, enter 9999.
2. Enter your administrator password, and then press **OK**.
3. Select **File > Shut down > Shut down**.
4. After the TX3 Configurator and Windows have finished shutting down, disconnect power from the Touch Screen.

B. Remove the old microphone

1. Open the door.
2. Use a screwdriver or utility knife to remove the old microphone circuit board from the inside of the door.
3. Clean any residue left behind.

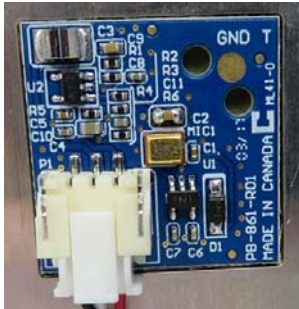


Figure 1 Old microphone on the door

4. Disconnect the old microphone cable.

C. Attach the new microphone to the door

The new microphone attaches to the inside of the door with double-sided tape. The microphone fits into an indentation in the door. For ideal sound quality, the opening on the flat side of the new microphone (see Figure 3) must align with the microphone opening on the door.

Align and attach the new microphone to the door using a multimeter probe

1. Remove the sticker to expose the adhesive on the flat side of the microphone board as shown in Figure 2.

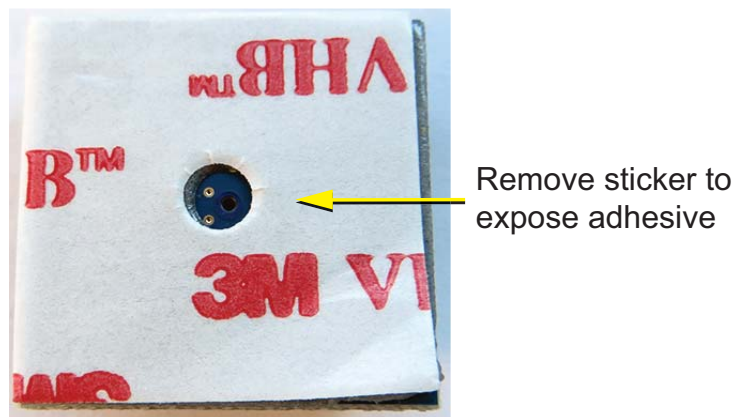


Figure 2 Remove sticker to expose adhesive on new microphone

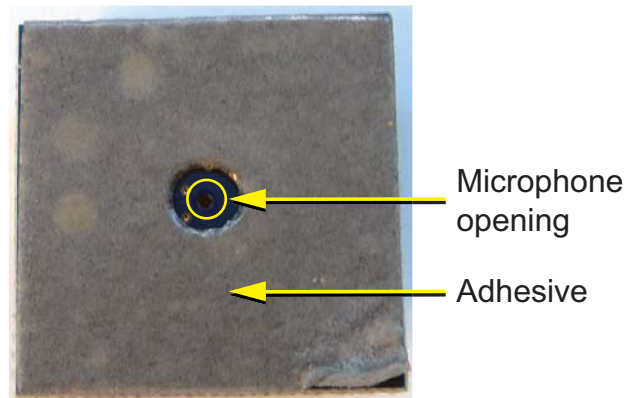


Figure 3 Location of the microphone opening on the new microphone

2. Open the door.
3. From the front of the door, insert the multimeter probe through the door's microphone opening.
4. Carefully insert the tip of the multimeter probe into the microphone opening on the microphone.

Caution: The microphone on the other side of the opening is very delicate. Permanent damage to the microphone can result if you force the tip of the multimeter probe too far into the microphone opening.

5. Align the microphone so that the terminal for the wiring harness is on the bottom (see Figure 4).

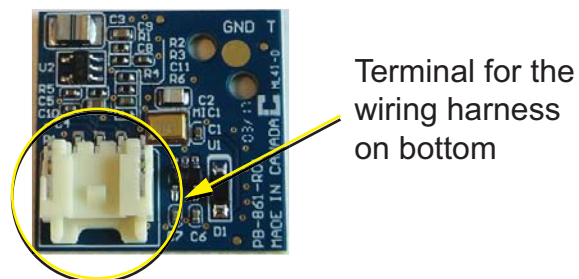


Figure 4 Proper alignment of the of the microphone board

6. Using the multimeter probe as a guide, move the microphone towards the door until the microphone attaches to the door.

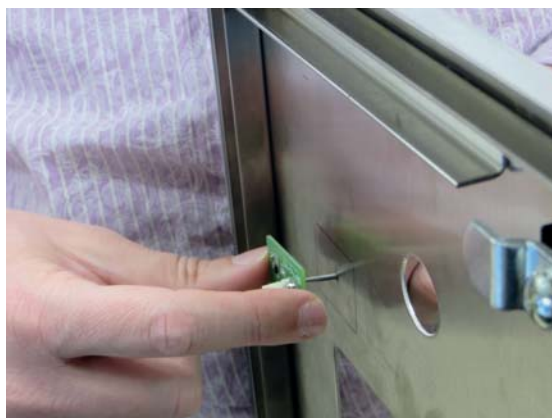


Figure 5 Aligning the microphone with the microphone hole

D. Connect the wiring harness to the lobby controller board

1. Connect the 4-pin connector on the wiring harness to the 4-pin terminal on the lobby controller board as shown in Figure 6.
2. If there is a jumper on JW11, remove it (see Figure 6).
3. Reconnect power to the unit, and then turn it on.

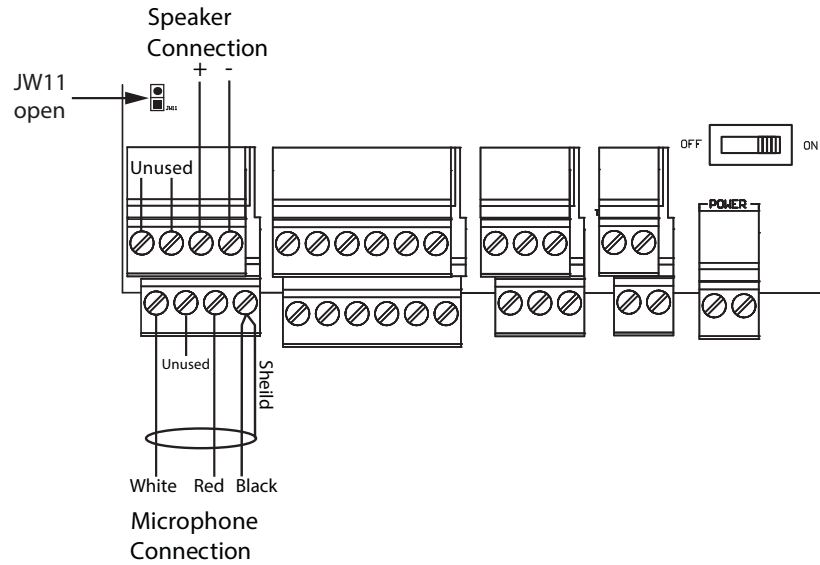


Figure 6 Microphone wiring