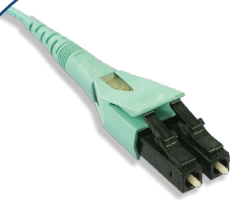


Power On

Quality. Speed. Innovation



Fiber
Optic



Audio
and Video



Active
Network



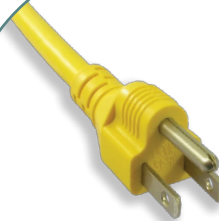
Fiber
Connectivity



Copper



Telco



Power



Copper
Connectivity



LYNN ELECTRONICS

1-800-523-6075
www.lynnelec.com
sales@lynnelec.com

Fiber Optic and Copper
Connectivity Solutions

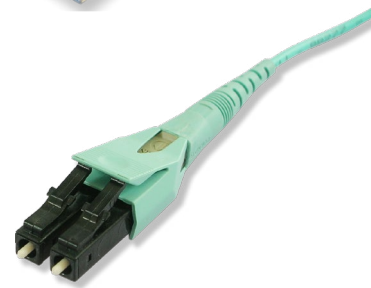
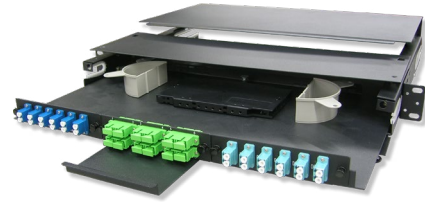
Lynn Electronics

Since 1964

Lynn Electronics provides prompt delivery of products whose performance are in accordance with our tradition of remarkable manufacturing standards.

We aim to be the industry standard in service to customers.

We maintain an exceptional level of integrity in interactions with business partners and associates.



Why Lynn Electronics?



25 Year
Performance and
Workmanship Warranty



Manufacturing
Locations
in Pennsylvania and
California



50+ Years of
Manufacturing

Dedication - Lynn Electronics is committed to supporting our Partners at every level required to promote their business needs in today's market. Our unrivaled customer service is supported by sales offices throughout the US and virtually nationwide coverage of manufacturer representatives.

Delivery - Lynn Electronics has manufacturing facilities on both coasts, providing our Partners with quick turnaround on custom copper & fiber assemblies, as well as BAA/TAA compliant patch cords and fiber assemblies.

Experience - In business since 1964, Lynn Electronics has over 50 years in the manufacturing business. Lynn Electronics has the knowledge, ability and resources to ensure that even the most complex projects or requirements are achieved with success.

Table of Contents

Fiber Optic

- 4 - Corning™ Gold Program
- 5 - Bright By Lynn Electronics
- 6 - Multimode OM1 and OM2 Fiber Optic Patch Cables
- 6 - Singlemode 9/125μ Fiber Optic Patch Cables
- 7 - Multimode 10 GIG OM3 50/125μ Fiber Optic Patch Cables
- 7 - Multimode 10 GIG OM4 50/125μ Fiber Optic Patch Cables
- 8 - Custom Fiber Optic Assemblies
- 9 - OTDR Launch Boxes
- 10 - Z-Fold Wall Mount
- 11 - Reduced Depth Rackmount Panel
- 12 - Swing-Out Panel
- 13 - Two Door Wall Mount
- 14 - Pre-Loaded LGX Rackmount Kits
- 16 - Fiber Optic Enclosures, Adapter Strips and Accessories
- 16 - Cassettes

Copper

- 17 - Optilink Connectivity Products
- 19 - CAT5E and CAT6 Patch Cables - Imports
- 20 - CAT5E and CAT6 Patch Cables
- 20 - CAT6A Patch Cables
- 20 - 28AWG Mini CAT6 and CAT6A Patch Cable

Active Network Equipment

- 21 - High Speed Data Storage Cables
- 21 - SFP Optical Transceivers
- 22 - TEC Optix Media Converters
- 22 - Network Switches

Audio and Video

- 23 - HDMI Cables
- 23 - SVGA Cables
- 23 - Audio Cables
- 23 - A/V Extenders and Switches

Telco

- 24 - 25 Pair Hydra Assemblies
- 24 - Pre-Wired Patch Panels, 66 Blocks and 110 Blocks
- 25 - CAT3 25 Pair Telco Assemblies
- 25 - CAT5E 25 Pair Telco Assemblies
- 26 - Replacement Handset Cords
- 26 - Modular Telephone Line Cords
- 26 - Bulk Modular Flat Cordage

Power

- 27 - NEMA Straight Blade Power Cords
- 27 - P-Lock Secure Power Cords
- 27 - Hospital Grade Power Cords
- 28 - IEC 60320 Power Cords
- 28 - International Power Cords
- 28 - Miscellaneous Power Cord and Power Related Products

Reference Guides

- 29 - Connector Identification
- 30 - MTP Polarity Guide

Interactive Catalog

Easily navigate the new catalog by utilizing interactive links found throughout the document. Click on the product in the table of contents to go to that specific page, click the website at the bottom of the page, or see the tabs on the side of every page.

Fiber Optic

Copper

Active Network

Audio and Video

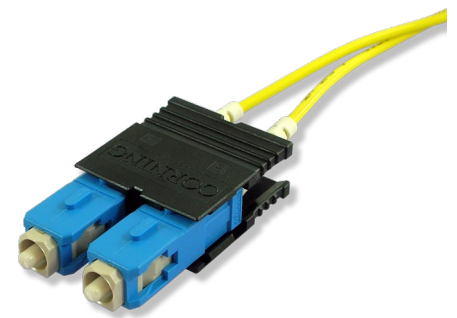
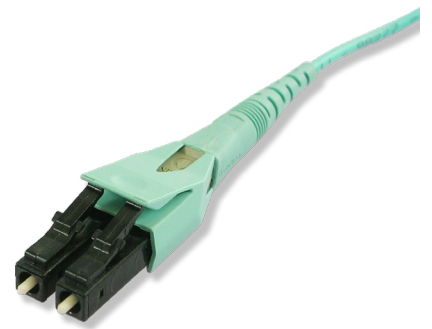
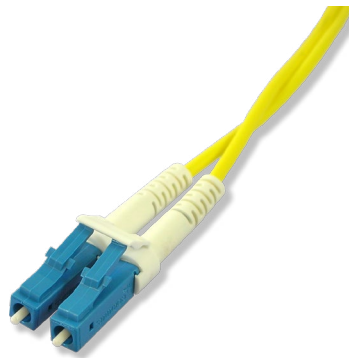
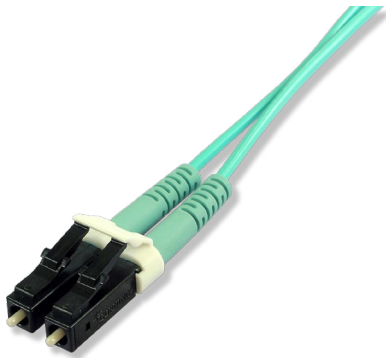
Telco

Power

Corning™ Gold Program

The Corning™ Cable Systems CAH Connections Gold Program represents the highest standard for fiber optic patch cord manufacturers.

By working with Corning™ Cable Systems and the CAH Connections Gold Program, Lynn Electronics offers the speed and flexibility of a cable assembly house with the high quality products, components and backing from Corning™ Cable Systems - a world leader in optical components. Because of this, Corning™ Cable Systems will extend its 25 year Extended Warranty Program (EWP) coverage to include simplex and duplex patch cords manufactured by Lynn Electronics' CAH Connections Gold Certified division for any project installed by a certified Network of Preferred Installers.



**CAH ConnectionsSM
Gold Program**

One of the world's first self-powered traceable fiber jumpers. Each end contains an LED and a button to activate, once activated your Bright jumper will light up at each connector end for easy traceability. Every Bright fiber jumper utilizes a switchable Uniboot connector and Corning™ ClearCurve® glass.

- Self tracing saves time and money
 - Blinking lights provide RAPID resolution for wiring mistakes
 - Quick release battery compartment for easy field replacement
 - 3v lithium battery with 8+ years shelf life
 - Patented technology
 - Efficient ID for optimizing labeling process
 - Reverse polarity Uniboot
 - Tracing AUTOMATICALLY shuts off at 20 seconds or 40 seconds
 - Product can be activated on either end
 - Utilizes Corning™ ClearCurve® Glass
 - UL Rated CMR-OF
-
- 1-15 meter cord standard lengths in stock
 - Custom lengths upon request



BRIGHT BY LYNN ELECTRONICS

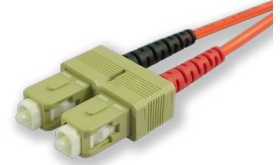
	LC/LC DX SM Bend Insensitive	LC/LC DX OM3 Bend Insensitive	LC/LC DX OM4 Bend Insensitive
1M	TGKK5AR001M	TGKK3AR001M	TGKK4AR001M
2M	TGKK5AR002M	TGKK3AR002M	TGKK4AR002M
3M	TGKK5AR003M	TGKK3AR003M	TGKK4AR003M
4M	TGKK5AR004M	TGKK3AR004M	TGKK4AR004M
5M	TGKK5AR005M	TGKK3AR005M	TGKK4AR005M
6M	TGKK5AR006M	TGKK3AR006M	TGKK4AR006M
7M	TGKK5AR007M	TGKK3AR007M	TGKK4AR007M
8M	TGKK5AR008M	TGKK3AR008M	TGKK4AR008M
9M	TGKK5AR009M	TGKK3AR009M	TGKK4AR009M
10M	TGKK5AR010M	TGKK3AR010M	TGKK4AR010M
11M	TGKK5AR011M	TGKK3AR011M	TGKK4AR011M
12M	TGKK5AR012M	TGKK3AR012M	TGKK4AR012M
13M	TGKK5AR013M	TGKK3AR013M	TGKK4AR013M
14M	TGKK5AR014M	TGKK3AR014M	TGKK4AR014M
15M	TGKK5AR015M	TGKK3AR015M	TGKK4AR015M



Lynn Electronics manufactures and stocks an extensive selection of fiber optic patch cables. All patch cables are available in both duplex and simplex with an OFNR, OFNP or LSZH jacket. All Lynn Electronics fiber patch cords are manufactured utilizing top of the line connectors and cable. All assemblies are 100% tested and documented with test results.

Multimode OM1 62.5/125 μ and OM2 50/125 μ Fiber Optic Patch Cables

- Corning™ Infinicor® optical glass
- OFNR, OFNP or LSZH rated jacket
- Factory termination and polish for optimum performance
- Individually packaged with test results
- 100% tested for insertion loss
- Ceramic ferrules on all (APC and UPC) LC, SC, ST and FC Connectors
- Duplex clips on all LC and SC connectors
- 12 Vibrant colored jackets available



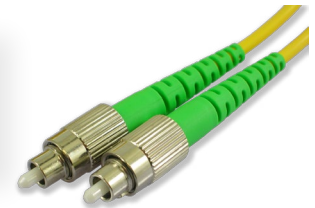
Multimode 62.5/125 μ Fiber Cables

	LC/LC	LC/SC	LC/ST	SC/SC	SC/ST	ST/ST
1M	LCLCDUPMM-1M	LCSCDUPMM-1M	LCSTDUPMM-1M	SCSCDUPMM-1M	SCSTDUPMM-1M	STSTDUPMM-1M
2M	LCLCDUPMM-2M	LCSCDUPMM-2M	LCSTDUPMM-2M	SCSCDUPMM-2M	SCSTDUPMM-2M	STSTDUPMM-2M
3M	LCLCDUPMM-3M	LCSCDUPMM-3M	LCSTDUPMM-3M	SCSCDUPMM-3M	SCSTDUPMM-3M	STSTDUPMM-3M
5M	LCLCDUPMM-5M	LCSCDUPMM-5M	LCSTDUPMM-5M	SCSCDUPMM-5M	SCSTDUPMM-5M	STSTDUPMM-5M
7M	LCLCDUPMM-7M	LCSCDUPMM-7M	LCSTDUPMM-7M	SCSCDUPMM-7M	SCSTDUPMM-7M	STSTDUPMM-7M
10M	LCLCDUPMM-10M	LCSCDUPMM-10M	LCSTDUPMM-10M	SCSCDUPMM-10M	SCSTDUPMM-10M	STSTDUPMM-10M
15M	LCLCDUPMM-15M	LCSCDUPMM-15M	LCSTDUPMM-15M	SCSCDUPMM-15M	SCSTDUPMM-15M	STSTDUPMM-15M
20M	LCLCDUPMM-20M	LCSCDUPMM-20M	LCSTDUPMM-20M	SCSCDUPMM-20M	SCSTDUPMM-20M	STSTDUPMM-20M
25M	LCLCDUPMM-25M	LCSCDUPMM-25M	LCSTDUPMM-25M	SCSCDUPMM-25M	SCSTDUPMM-25M	STSTDUPMM-25M
30M	LCLCDUPMM-30M	LCSCDUPMM-30M	LCSTDUPMM-30M	SCSCDUPMM-30M	SCSTDUPMM-30M	STSTDUPMM-30M

- All Multimode patch cables are available in standard 50/125 μ also. Change part number to DUPMM50.
- Additional connector styles, custom lengths, jacket ratings and colors available.
- Cable OD Options: 1.2MM, 1.6MM, 2MM, 3MM
- Special boot options: Short SC/LC, Bendable SC/LC, and Uniboot LC

Singlemode 9/125 μ Fiber Optic Patch Cables

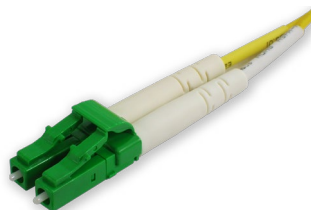
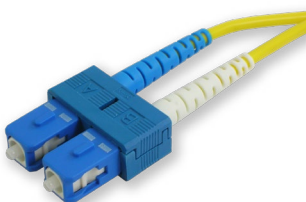
- Corning™ SMF28e® bend insensitive series optical glass
- OFNR, OFNP or LSZH rated jacket
- Factory termination and polish for optimum performance
- Individually packaged with test results
- 100% tested for insertion and return loss
- Ceramic ferrules on all LC, SC, ST and FC connectors
- Duplex clips on all LC and SC connectors
- 12 Vibrant colored jackets available



Singlemode 9/125 μ Fiber Cables

	LC/LC	LC/SC	LC/ST	SC/SC	SC/ST	ST/ST
1M	LCLCDUPSM-1M	LCSCDUPSM-1M	LCSTDUPSM-1M	SCSCDUPSM-1M	SCSTDUPSM-1M	STSTDUPSM-1M
2M	LCLCDUPSM-2M	LCSCDUPSM-2M	LCSTDUPSM-2M	SCSCDUPSM-2M	SCSTDUPSM-2M	STSTDUPSM-2M
3M	LCLCDUPSM-3M	LCSCDUPSM-3M	LCSTDUPSM-3M	SCSCDUPSM-3M	SCSTDUPSM-3M	STSTDUPSM-3M
5M	LCLCDUPSM-5M	LCSCDUPSM-5M	LCSTDUPSM-5M	SCSCDUPSM-5M	SCSTDUPSM-5M	STSTDUPSM-5M
7M	LCLCDUPSM-7M	LCSCDUPSM-7M	LCSTDUPSM-7M	SCSCDUPSM-7M	SCSTDUPSM-7M	STSTDUPSM-7M
10M	LCLCDUPSM-10M	LCSCDUPSM-10M	LCSTDUPSM-10M	SCSCDUPSM-10M	SCSTDUPSM-10M	STSTDUPSM-10M
15M	LCLCDUPSM-15M	LCSCDUPSM-15M	LCSTDUPSM-15M	SCSCDUPSM-15M	SCSTDUPSM-15M	STSTDUPSM-15M
20M	LCLCDUPSM-20M	LCSCDUPSM-20M	LCSTDUPSM-20M	SCSCDUPSM-20M	SCSTDUPSM-20M	STSTDUPSM-20M
25M	LCLCDUPSM-25M	LCSCDUPSM-25M	LCSTDUPSM-25M	SCSCDUPSM-25M	SCSTDUPSM-25M	STSTDUPSM-25M
30M	LCLCDUPSM-30M	LCSCDUPSM-30M	LCSTDUPSM-30M	SCSCDUPSM-30M	SCSTDUPSM-30M	STSTDUPSM-30M

- LC, SC and FC connectors available in APC versions. Add an "A" to the connector to designate APC. Example: LCASCDUPSM.
- All singlemode assemblies are available in bend insensitive versions. Available with 5mm, 7.5mm or 10mm bend radius optical glass.
- FC, MU and E2000 assemblies available upon request.
- Additional connector styles, custom lengths, jacket ratings and colors available.
- Cable OD Options: 1.2MM, 1.6MM, 2MM, 3MM
- Special boot options: Short SC/LC, Bendable SC/LC, and Uniboot LC

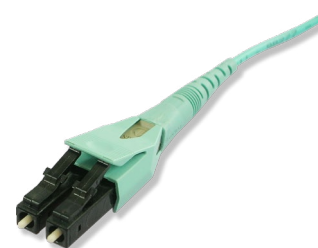
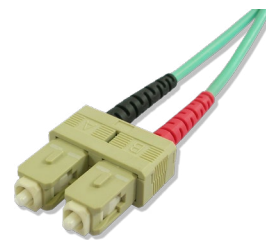


Multimode 10 GIG OM3 50/125 μ Fiber Optic Patch Cables

- Corning™ Infinicor SX series® optical glass
- OFNR, OFNP or LSZH rated jacket
- Factory termination and polish for optimum performance
- Individually packaged with test results
- 100% tested for insertion loss
- Ceramic ferrules on all LC, SC and ST connectors
- Duplex clips on all LC and SC connectors
- 12 Vibrant colored jackets available

10GIG OM3 50/125 μ Fiber Cables

	LC/LC	LC/SC	LC/ST	SC/SC
1M	LCLC-10GIG-1M	LCSC-10GIG-1M	LCST-10GIG-1M	SCSC-10GIG-1M
2M	LCLC-10GIG-2M	LCSC-10GIG-2M	LCST-10GIG-2M	SCSC-10GIG-2M
3M	LCLC-10GIG-3M	LCSC-10GIG-3M	LCST-10GIG-3M	SCSC-10GIG-3M
5M	LCLC-10GIG-5M	LCSC-10GIG-5M	LCST-10GIG-5M	SCSC-10GIG-5M
7M	LCLC-10GIG-7M	LCSC-10GIG-7M	LCST-10GIG-7M	SCSC-10GIG-7M
10M	LCLC-10GIG-10M	LCSC-10GIG-10M	LCST-10GIG-10M	SCSC-10GIG-10M
15M	LCLC-10GIG-15M	LCSC-10GIG-15M	LCST-10GIG-15M	SCSC-10GIG-15M
20M	LCLC-10GIG-20M	LCSC-10GIG-20M	LCST-10GIG-20M	SCSC-10GIG-20M
25M	LCLC-10GIG-25M	LCSC-10GIG-25M	LCST-10GIG-25M	SCSC-10GIG-25M
30M	LCLC-10GIG-30M	LCSC-10GIG-30M	LCST-10GIG-30M	SCSC-10GIG-30M



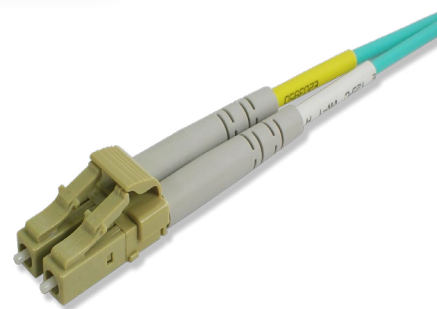
- Additional connector styles, custom lengths, jacket ratings and colors available.
- Cable OD Options: 1.2MM, 1.6MM, 2MM, 3MM
- Special boot options: Short SC/LC, Bendable SC/LC, and Uniboot LC

Multimode 10 GIG OM4 50/125 μ Fiber Optic Patch Cables

- Corning™ Infinicor SX series® optical glass
- OFNR, OFNP or LSZH rated jacket
- Factory termination and polish for optimum performance
- Individually packaged with test results
- 100% tested for insertion loss
- Ceramic ferrules on all LC, SC and ST connectors
- Duplex clips on all LC and SC connectors
- 12 Vibrant colored jackets available

10GIG OM4 50/125 μ Fiber Cables

	LC/LC	LC/SC	LC/ST	SC/SC
1M	LCLC-OM4-1M	LCSC-OM4-1M	LCST-OM4-1M	SCSC-OM4-1M
2M	LCLC-OM4-2M	LCSC-OM4-2M	LCST-OM4-2M	SCSC-OM4-2M
3M	LCLC-OM4-3M	LCSC-OM4-3M	LCST-OM4-3M	SCSC-OM4-3M
5M	LCLC-OM4-5M	LCSC-OM4-5M	LCST-OM4-5M	SCSC-OM4-5M
7M	LCLC-OM4-7M	LCSC-OM4-7M	LCST-OM4-7M	SCSC-OM4-7M
10M	LCLC-OM4-10M	LCSC-OM4-10M	LCST-OM4-10M	SCSC-OM4-10M
15M	LCLC-OM4-15M	LCSC-OM4-15M	LCST-OM4-15M	SCSC-OM4-15M
20M	LCLC-OM4-20M	LCSC-OM4-20M	LCST-OM4-20M	SCSC-OM4-20M
25M	LCLC-OM4-25M	LCSC-OM4-25M	LCST-OM4-25M	SCSC-OM4-25M
30M	LCLC-OM4-30M	LCSC-OM4-30M	LCST-OM4-30M	SCSC-OM4-30M



- Additional connector styles, custom lengths, jacket ratings and colors available.
- Cable OD Options: 1.2MM, 1.6MM, 2MM, 3MM
- Special boot options: Short SC/LC, Bendable SC/LC, and Uniboot LC

Lynn Electronics' state of the art custom fiber production facilities, located in Pennsylvania and California, have the ability to produce everything from the simplest 900 μ pigtail to 144 strand OSP assemblies and 100% Corning™ Gold assemblies. Our highly trained production staff, top of the line termination and polishing equipment along with the latest in test equipment, ensure that every assembly produced meets or exceeds industry standards.

Custom Fiber Optic Assemblies

Simplex, duplex, 900 μ m unjacketed, pigtails and multi strand assemblies

Corning™, Senko, Suncall and Fiberon reverse polarity LC uniboot assemblies available

Corning™ Gold assemblies available

Corning™ MTP assemblies available using Corning™ Cable Systems reduced diameter cable for 12, 24, 36 and 48 strand trunks

MTP trunks and QSFP+ 40G assemblies available.

Cable: Corning™, Berk-Tek, Hitachi, TLC, OCC, Generic plus many other manufacturers

Connectors: Senko, Suncall, AFOP, Corning™, Fiberon and generic available

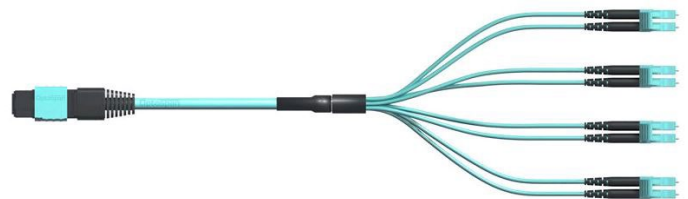
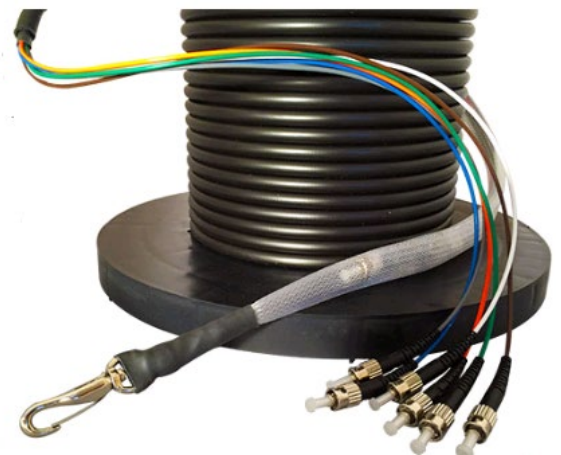
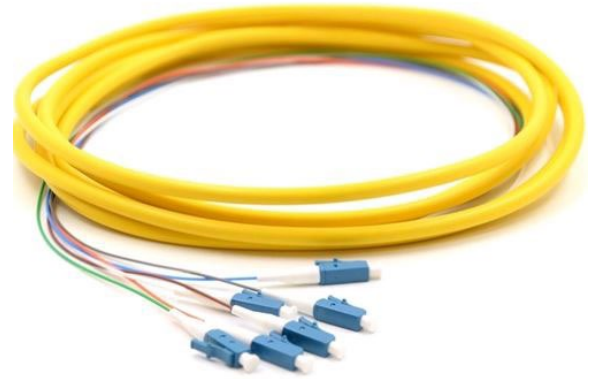
LC, LC APC, SC, SC APC, ST, MTRJ, MTP/MPO, MU, E2000, FC and FC APC connectors available

SM 9/125, MM 62.5/125, MM 50/125 (OM2) and MM 50/125 Laser Optimized 10 GIG OM3 and OM4 available

SM 9/125 Bend insensitive fiber in 10mm, 7.5mm and 5mm bend radius available

12 pack and 6 pack 900 μ pigtail kits available for fusion splicing applications

Every assembly 100% tested and packaged with test results



Pulse suppression boxes, sometimes referred to as “Dead Zone” or “Launch Boxes” are typically used with Optical Time Domain Reflectometers (OTDR). The boxes suppress the initial pulse when light leaves the transmitter of the OTDR enabling the OTDR to make the measurements along the entire length of the fiber.

Lynn Electronics offers Launch Boxes and Pouches custom lengths. Singlemode fiber launch assemblies are available with FC/SC/ST and LC Connectors, including APC version where appropriate.

Part Number	Description
LBSCSCSM-XXXM	Launch Box, SC SM available in 150, 300, 500, 1000M w/ 2 meter B/O
LBSTSTSM-XXXM	Launch Box, ST SM available in 150, 300, 500, 1000M w/ 2 meter B/O
LBLCLCSM-XXXM	Launch Box, LC SM available in 150, 300, 500, 1000M w/ 2 meter B/O
LBSCSTSM-XXXM	Launch Box, SC-ST SM available in 150, 300, 500, 1000M w/ 2 meter B/O
LBLCSCSM-XXXM	Launch Box, LC-SC SM available in 150, 300, 500, 1000M w/ 2 meter B/O
LBSCASCASM-XXXM	Launch Box, SCA-SCA SM available in 150, 300, 500, 1000M w/ 2 meter B/O
LBSCSCASM-XXXM	Launch Box, SC-SCA SM available in 150, 300, 500, 1000M w/ 2 meter B/O



Copper

Active Network

Part Number	Description
LBSCSCOM3-XXXM	Launch Box, SC OM3 available in 150, 300, 500, 1000M w/ 2 meter B/O
LCSTSTOM3-XXXM	Launch Box, ST OM3 available in 150, 300, 500, 1000M w/ 2 meter B/O
LBLCLCOM3-XXXM	Launch Box, LC OM3 available in 150, 300, 500, 1000M w/ 2 meter B/O
LBSCSTOM3-XXXM	Launch Box, SC-ST OM3 available in 150, 300, 500, 1000M w/ 2 meter B/O
LBLSCCOM3-XXXM	Launch Box, LC-SC OM3 available in 150, 300, 500, 1000M w/ 2 meter B/O



Audio and Video

Connector Insertion Loss

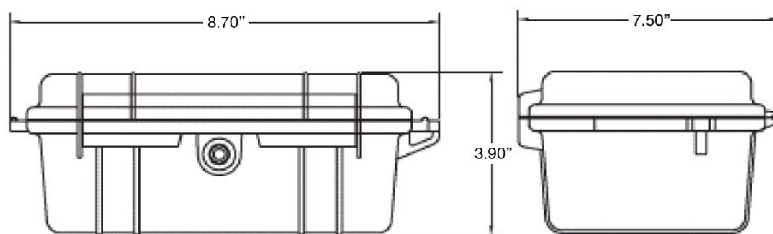
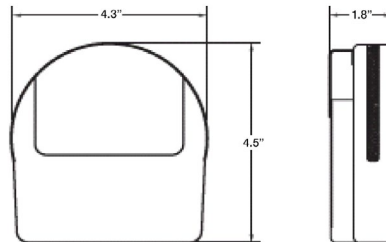
UPC or APC: 0.3 dB Typical, 0.5 dB Max

Connector Return Loss

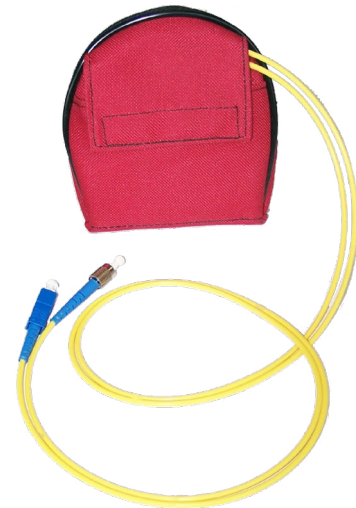
UPC: > 55 dB
APC: > 65 dB

End Face Geometry

Meets or Exceeds all Telcordia GR-326 Requirements



Interior Dimensions: 7.58" x 5.08" x 3.23"



Telco

Power

Z-Fold Wall Mount



Features:

- Sturdy construction
- Compact footprint
- Locked protection for the service provider side
- Multiple entry/exit points for both the end user and service provider
- Latched cover for end user access
- 6-24 SC and 6-48 LC adapters
- Light weight aluminum
- Delivered fully loaded, per end user's spec, under one part number

Z-Fold Wall Mount

Part Number	Description
ZWPM-48	2 Strip LGX Wall Mount Patch Panel, Empty - Latch on cover, Lock on side, Aluminum
ZWP6B11F9CY003M	2 Strip LGX Wall Mount Patch Panel, Loaded with 12F SCA Pigtail and Plastic Splice Tray - Latch on cover, Lock on side, Aluminum
ZWP6B11B9CY003M	2 Strip LGX Wall Mount Patch Panel, Loaded with 12F SCU Pigtail and Plastic Splice Tray - Latch on cover, Lock on side, Aluminum
ZWP6B11E9CY003M	2 Strip LGX Wall Mount Patch Panel, Loaded with 12F LCA Pigtail and Plastic Splice Tray - Latch on cover, Lock on side, Aluminum
ZWP6B11A9CY003M	2 Strip LGX Wall Mount Patch Panel, Loaded with 12F LCU Pigtail and Plastic Splice Tray - Latch on cover, Lock on side, Aluminum
ZWP6B2XF9CY003M	2 Strip LGX Wall Mount Patch Panel, Loaded with 24F SCA Pigtail and Plastic Splice Tray - Latch on cover, Lock on side, Aluminum
ZWP6B2XB9CY003M	2 Strip LGX Wall Mount Patch Panel, Loaded with 24F SCU Pigtail and Plastic Splice Tray - Latch on cover, Lock on side, Aluminum
ZWP6B2XE9CY003M	2 Strip LGX Wall Mount Patch Panel, Loaded with 24F LCA Pigtail and Plastic Splice Tray - Latch on cover, Lock on side, Aluminum
ZWP6B2XA9CY003M	2 Strip LGX Wall Mount Patch Panel, Loaded with 24F LCU Pigtail and Plastic Splice Tray - Latch on cover, Lock on side, Aluminum
ZWP6B11F9CM003M	2 Strip LGX Wall Mount Patch Panel, Loaded with 12F SCA Pigtail and Metal Splice Tray - Latch on cover, Lock on side, Aluminum
ZWP6B11B9CM003M	2 Strip LGX Wall Mount Patch Panel, Loaded with 12F SCU Pigtail and Metal Splice Tray - Latch on cover, Lock on side, Aluminum
ZWP6B11E9CM003M	2 Strip LGX Wall Mount Patch Panel, Loaded with 12F LCA Pigtail and Metal Splice Tray - Latch on cover, Lock on side, Aluminum
ZWP6B11A9CM003M	2 Strip LGX Wall Mount Patch Panel, Loaded with 12F LCU Pigtail and Metal Splice Tray - Latch on cover, Lock on side, Aluminum
ZWP6B2XF9CM003M	2 Strip LGX Wall Mount Patch Panel, Loaded with 24F SCA Pigtail and Metal Splice Tray - Latch on cover, Lock on side, Aluminum
ZWP6B2XB9CM003M	2 Strip LGX Wall Mount Patch Panel, Loaded with 24F SCU Pigtail and Metal Splice Tray - Latch on cover, Lock on side, Aluminum
ZWP6B2XE9CM003M	2 Strip LGX Wall Mount Patch Panel, Loaded with 24F LCA Pigtail and Metal Splice Tray - Latch on cover, Lock on side, Aluminum
ZWP6B2XA9CM003M	2 Strip LGX Wall Mount Patch Panel, Loaded with 24F LCU Pigtail and Metal Splice Tray - Latch on cover, Lock on side, Aluminum



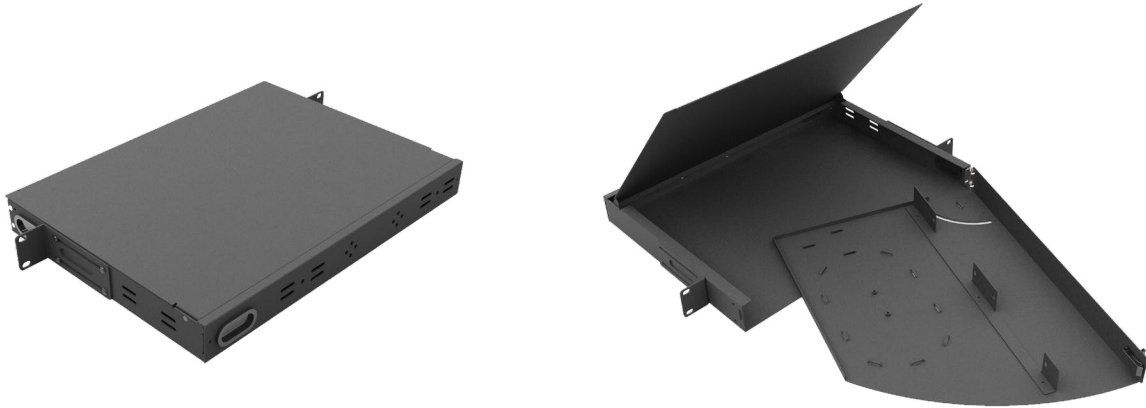
Features:

- Sturdy construction
- Heavy duty side rail
- Reduced depth for space saving installation in closets
- Optional front fiber management
- Removable magnetic top for easy access
- Multiple entry points for future expansion
- 6-36 SC adapters and 6-72 LC adapters
- Dimensions With Protector: 330mm x 440 mm
- Dimensions Without Protector: 248mm x 440mm
- Delivered fully loaded, per end user's spec, under one part number

Reduced Depth Rackmount Panel

Part Number	Description
FRD-1U	Empty: strips and splice trays not included, without front protector
FRDP-1U	Empty: strips and splice trays not included, with front protector
FRD-PROT	Front protector
RD1B12B9CY003M	12 count SCU + pigtail + plastic splice tray + 2 blanks: without front protector
RD1B12E9CY003M	12 count SCA + pigtail + plastic splice tray + 2 blanks: without front protector
RD1B12A9CY003M	12 count LCU + pigtail + plastic splice tray + 2 blanks: without front protector
RD1B12F9CY003M	12 count LCA + pigtail + plastic splice tray + 2 blanks: without front protector
RD1B12B9CM003M	12 count SCU + pigtail + metal splice tray + 2 blanks: without front protector
RD1B12E9CM003M	12 count SCA + pigtail + metal splice tray + 2 blanks: without front protector
RD1B12A9CM003M	12 count LCU + pigtail + metal splice tray + 2 blanks: without front protector
RD1B12F9CM003M	12 count LCA + pigtail + metal splice tray + 2 blanks: without front protector
RDP1B12B9CY003M	12 count SCU + pigtail + plastic splice tray + 2 blanks: with front protector
RDP1B12E9CY003M	12 count SCA + pigtail + plastic splice tray + 2 blanks: with front protector
RDP1B12A9CY003M	12 count LCU + pigtail + plastic splice tray + 2 blanks: with front protector
RDP1B12F9CY003M	12 count LCA + pigtail + plastic splice tray + 2 blanks: with front protector
RDP1B12B9CM003M	12 count SCU + pigtail + metal splice tray + 2 blanks: with front protector
RDP1B12E9CM003M	12 count SCA + pigtail + metal splice tray + 2 blanks: with front protector
RDP1B12A9CM003M	12 count LCU + pigtail + metal splice tray + 2 blanks: with front protector
RDP1B12F9CM003M	12 count LCA + pigtail + metal splice tray + 2 blanks: with front protector

Swing-Out Panel



Features:

- Sturdy construction
- Full frontal access to splicing, terminations and traffic management
- Solid protection for adapters and fibers (the others have none or fragile protection at best)
- One exit point to eliminate the possibility of incorrect routing
- Removeable top for easy access
- 19" and 23" racking capability
- 6-24 SC and 6-48 LC adapters
- Delivered fully loaded, per end user's spec, under one part number

Swing-Out Panel

Part Number	Description
FRSP-1U	1u Swing-Out, Empty: strips and splice trays not included
RSP1B11B9CY003M	1u Swing-Out, 12 count SCU + pigtail + plastic splice tray + blank
RSP1B11E9CY003M	1u Swing-Out, 12 count SCA + pigtail + plastic splice tray + blank
RSP1B11A9CY003M	1u Swing-Out, 12 count LCU + pigtail + plastic splice tray + blank
RSP1B11F9CY003M	1u Swing-Out, 12 count SCA + pigtail + plastic splice tray + blank
RSP1B11B9CM003M	1u Swing-Out, 12 count SCU + pigtail + metal splice tray + blank
RSP1B11E9CM003M	1u Swing-Out, 12 count SCA + pigtail + metal splice tray + blank
RSP1B11A9CM003M	1u Swing-Out, 12 count LCU + pigtail + metal splice tray + blank
RSP1B11F9CM003M	1u Swing-Out, 12 count LCA + pigtail + metal splice tray + blank



Features:

- Sturdy construction
- Lockable service provider door
- Latched end user door
- Multiple slide out entry/exit points for easy additions
- 6-14 SC adapters and 6-48 LC adapters
- Delivered fully loaded, per end user's spec, under one part number

Two Door Wall Mount

Part Number	Description
W2PM-48	2 Strip LGX Wall Mount Patch Panel, Empty - With lock, Latch only
W2P6B11F9CY003M	2 Strip LGX Wall Mount Patch Panel, Loaded with 12F SCA Pigtail and Plastic Splice Tray - With lock, Latch only
W2P6B11B9CY003M	2 Strip LGX Wall Mount Patch Panel, Loaded with 12F SCU Pigtail and Plastic Splice Tray - With lock, Latch only
W2P6B11E9CY003M	2 Strip LGX Wall Mount Patch Panel, Loaded with 12F LCU Pigtail and Plastic Splice Tray - With lock, Latch only
W2P6B11A9CY003M	2 Strip LGX Wall Mount Patch Panel, Loaded with 24F SCA Pigtail and Plastic Splice Tray - With lock, Latch only
W2P6B2XF9CY003M	2 Strip LGX Wall Mount Patch Panel, Loaded with 24F SCU Pigtail and Plastic Splice Tray - With lock, Latch only
W2P6B2XB9CY003M	2 Strip LGX Wall Mount Patch Panel, Loaded with 24F LCA Pigtail and Plastic Splice Tray - With lock, Latch only
W2P6B2XE9CY003M	2 Strip LGX Wall Mount Patch Panel, Loaded with 24F LCU Pigtail and Plastic Splice Tray - With lock, Latch only
W2P6B2XA9CY003M	2 Strip LGX Wall Mount Patch Panel, Loaded with 24F LCU Pigtail and Plastic Splice Tray - With lock, Latch only
W2P6B11F9CM003M	2 Strip LGX Wall Mount Patch Panel, Loaded with 12F SCA Pigtail and Metal Splice Tray - With lock, Latch only
W2P6B11B9CM003M	2 Strip LGX Wall Mount Patch Panel, Loaded with 12F SCU Pigtail and Metal Splice Tray - With lock, Latch only
W2P6B11E9CM003M	2 Strip LGX Wall Mount Patch Panel, Loaded with 12F LCA Pigtail and Metal Splice Tray - With lock, Latch only
W2P6B11A9CM003M	2 Strip LGX Wall Mount Patch Panel, Loaded with 12F LCU Pigtail and Metal Splice Tray - With lock, Latch only
W2P6B2XF9CM003M	2 Strip LGX Wall Mount Patch Panel, Loaded with 24F SCA Pigtail and Metal Splice Tray - With lock, Latch only
W2P6B2XB9CM003M	2 Strip LGX Wall Mount Patch Panel, Loaded with 24F SCU Pigtail and Metal Splice Tray - With lock, Latch only
W2P6B2XE9CM003M	2 Strip LGX Wall Mount Patch Panel, Loaded with 24F LCA Pigtail and Metal Splice Tray - With lock, Latch only
W2P6B2XA9CM003M	2 Strip LGX Wall Mount Patch Panel, Loaded with 24F LCU Pigtail and Metal Splice Tray - With lock, Latch only

Pre-Loaded LGX Rackmount Kits

All configurations below available 1U, 2U, 4U. Only a 1U panel is pictured.



LC 10 GIG OM3/OM4
Available with 24F adapters



LC/APC Singlemode
Available with 24F adapters



LC/UPC Singlemode
Available with 24F adapters



LC Multimode 62.5/OM2
Available with 24F adapters



SC 10 GIG OM3/OM4



SC/APC Singlemode



SC/UPC Singlemode



SC Multimode 62.5/OM2



ST 10 GIG OM3/OM4

Fiber Optic

Copper

Active Network

Audio and Video

Telco

Power



1U



2U



4U

Pre-Loaded LGX Rackmount Kits Part Number Generator

	Prefix	Size	# of Ports	# of Panels	# of Blanks	Connector	Fiber Type	Breakout	Splice Tray	Pigtail (L)
Rack Mount	RMP	(1)	(2)	(3)	(4)	(5)	(6)	(7)	(8)	(9)
High Density Rackmount	RHD	(1)	(2)	(3)	(4)	(5)	(6)	(7)	(8)	(9)
Reduced Depth Rackmount	RDP	(1)	(2)	(3)	(4)	(5)	(6)	(7)	(8)	(9)
Panel	RD	(1)	(2)	(3)	(4)	(5)	(6)	(7)	(8)	(9)
Swing Out Rackmount	RSP	(1)	(2)	(3)	(4)	(5)	(6)	(7)	(8)	(9)
Wall Mount 1 Door	W1P	(1)	(2)	(3)	(4)	(5)	(6)	(7)	(8)	(9)
Wall Mount 2 Door	W2P	(1)	(2)	(3)	(4)	(5)	(6)	(7)	(8)	(9)
Z Fold Wall Mount	ZWP	(1)	(2)	(3)	(4)	(5)	(6)	(7)	(8)	(9)

(1)	SIZE
1	1u Rack Mount
2	2u Rack Mount
3	3u Rack Mount
4	4u Rack Mount
5	1 Plate Wall Mount
6	2 Plate Wall Mount
7	3 Plate Wall Mount

(2)	# of Ports
A	6
B	12
C	18
D	24
E	24 High Density
F	36
G	48
H	48 High Density
I	72
J	72 High Density
K	96
L	96 High Density
M	144
N	144 High Density
P	288 High Density
R	CUSTOM NUMBER

(3)	# of Panels
1	1 Panel
2	2 Panel
3	3 Panel
4	4 Panel
5	5 Panel
6	6 Panel
7	7 Panel
8	8 Panel
9	9 Panel
10	10 Panel
11	11 Panel
12	12 Panel

(4)	# of Blanks
#	X, 1, 2, 3, ...

(5)	Connector
A	LC
B	SC
C	ST
D	LC/APC
E	SC/APC
F	FC
G	FC/APC
H	E-2000 APC
J	LC/MTP MALE
K	SC/MTP MALE
M	LC SPLICE CASSETTE

(6)	Fiber Type
1	OM1
2	OM2
3	OM3
4	OM4
5	OM5
9	OS2

(7)	Breakout
A	No Pigtail
B	900u Pigtail (no jacket)
C	900u Pigtail (w/jacket)
D	250u Pigtail (no jacket)
E	250u Pigtail (w/jacket)
F	IN/OUT PIGTAIL
G	CUSTOM LENGTH PIGTAIL
R	RIBBON PIGTAIL

(8)	Splice Tray (# of Fibers)
C	Splice Chip
M	12F METAL SPLICE TRAY
N	24F METAL SPLICE TRAY
R	Ribbon Splice Tray
X	NO SPLICE TRAY
Y	12F PLASTIC Splice Tray
Z	24F PLASTIC Splice Tray

(9)	Pigtail Length
	XXX

(10)	UOM
M	Meters
F	Feet

Fiber Optic Enclosures, Adapter Strips and Accessories



- LGX Footprint
- 18 Gauge steel
- Black powder coat finish
- Standard 19"/23" rack mount
- Available unloaded or loaded per customer requirements
- Custom branding available

Rack Mount Enclosures

FRMP-1U	1U 19"/23" Rack Mount Enclosure, holds up to 3 adapter strips or cassettes - *maximum capacity of 72 fibers*
FRMP-2U	2U 19"/23" Rack Mount Enclosure, holds up to 6 adapter strips or cassettes - *maximum capacity of 144 fibers*
FRMP-4U	4U 19"/23" Rack Mount Enclosure, holds up to 12 adapter strips or cassettes - *maximum capacity of 288 fibers*

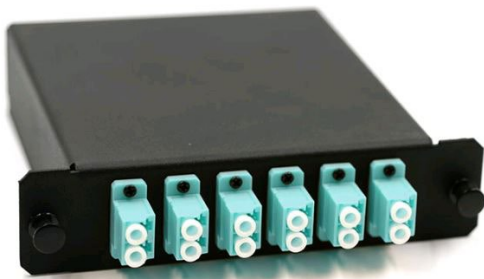
* Maximum capacity based on utilizing high density 24 port LC adapter strips

Rack Mount Enclosures

FWMP-24	Wall Mount Enclosure, holds up to 1 adapter strip or cassette *maximum capacity of 24 fibers*
FWMP-48	Wall Mount Enclosure, holds up to 2 adapter strips or cassettes *maximum capacity of 48 fibers*
FWMP-96	Wall Mount Enclosure, holds up to 4 adapter strips or cassettes *maximum capacity of 96 fibers*



Cassettes



Cassettes (Fully Loaded)

FCS-12MSC	12 Fiber SC to 1 MTP/MPO MM 62.5μ and 50μ distribution cassette
FCS-12GSC	12 Fiber SC to 1 MTP/MPO MM 10GIG distribution cassette
FCS-12SSC	12 Fiber SC to 1 MTP/MPO SM distribution cassette
FCS-12MLC	12 Fiber LC to 1 MTP/MPO MM 62.5μ and 50μ distribution cassette
FCS-12GLC	12 Fiber LC to 1 MTP/MPO MM 10GIG distribution cassette
FCS-12SLC	12 Fiber LC to 1 MTP/MPO SM distribution cassette
FCS-24MLC	24 Fiber LC to 2 MTP/MPO's MM 62.5μ and 50μ distribution cassette
FCS-24GLC	24 Fiber LC to 2 MTP/MPO's MM 10GIG distribution cassette
FCS-24SLC	24 Fiber LC to 2 MTP/MPO's SM distribution cassette

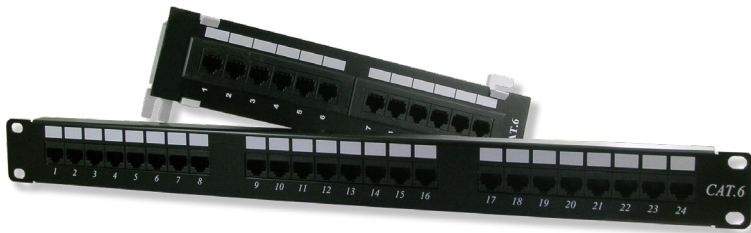
Adapter Strips

FAS-24GLC	24 Fiber high density LC quad 6 Port MM 10GIG adapter strip
FAS-24SLC	24 Fiber high density LC quad 6 Port SM adapter strip
FAS-12GLC	12 Fiber LC duplex 6 Port MM 10GIG adapter strip
FAS-12MLC	12 Fiber LC duplex 6 Port MM 62.5μ and 50μ adapter strip
FAS-12SLC	12 Fiber LC duplex 6 Port SM adapter strip
FAS-12ALC	12 Fiber LC APC duplex 6 Port SM adapter strip
FAS-12GSC	12 Fiber SC duplex 6 Port MM 10GIG adapter strip
FAS-12MSC	12 Fiber SC duplex 6 Port MM 62.5μ and 50μ adapter strip
FAS-12SSC	12 Fiber SC duplex 6 Port SM adapter strip
FAS-12ASC	12 Fiber SC APC duplex 6 Port SM adapter strip
FAS-6GSC	6 Fiber SC simplex 6 Port MM 10GIG adapter strip
FAS-6MSC	6 Fiber SC simplex 6 Port MM adapter strip
FAS-6SSC	6 Fiber SC simplex 6 Port SM adapter strip
FAS-6ASC	6 Fiber SC APC simplex 6 Port SM adapter strip
FAS-12SST	12 Fiber ST simplex 12 Port SM adapter strip
FAS-6SST	6 Fiber ST simplex 6 Port SM adapter strip
FAS-6MST	6 Fiber ST simplex 6 Port MM adapter strip
FAS-BLANK	Blank adapter strip

• Additional configurations and connectors available.

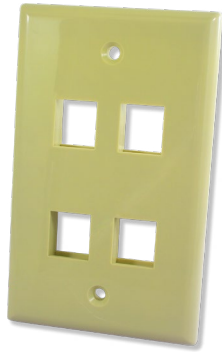
Lynn Electronics offers a complete line of CAT5E and CAT6 keystone jacks, inserts, patch panels and wall plates under our Optilink brand. The Optilink line of copper connectivity is a cost-affordable and reliable choice for most standard network installations.

Optilink Connectivity Products



CAT5E and CAT6 Patch Panels

C5E-12V	12 Port CAT5E Vertical wall mount patch panel with 89D bracket
C5E-24	1U 24 Port CAT5E 19" rack mount patch panel
C5E-48	2U 48 Port CAT5E 19" rack mount patch panel
C6-12V	12 Port CAT6 Vertical wall mount patch panel with 89D bracket
C6-24	1U 24 Port CAT6 19" rack mount patch panel
C6-48	2U 48 Port CAT6 19" rack mount patch panel



Custom Audio/Video wall plates available

Custom Wall Plates

7W-2P	Single gang 2 port ivory wall plate with ID windows
7W-2P-W	Single gang 2 port white wall plate with ID windows
7W-4P	Single gang 4 port ivory wall plate with ID windows
7W-4P-W	Single gang 4 port white wall plate with ID windows
7-1P	Single gang 1 port ivory wall plate
7-1P-W	Single gang 1 port white wall plate
7-2P	Single gang 2 port ivory wall plate
7-2P-W	Single gang 2 port white wall plate
7-3P	Single gang 3 port ivory wall plate
7-3P-W	Single gang 3 port white wall plate
7-4P	Single gang 4 port ivory wall plate
7-4P-W	Single gang 4 port white wall plate
7-6P	Single gang 6 port ivory wall plate
7-6P-W	Single gang 6 port white wall plate



1-EHT030
4 Pair 110 Quick termination tool

Keystone Jacks

1-45E-XX	CAT5E 90° RJ45 Keystone jack, 110 style punchdown with dust cover
1-KJC6-XX	CAT6 90° RJ45 Keystone jack, 110 style punchdown with dust cover
1-KJHDMIFF-WH	HDMI Keystone jack, Female/Female, White
1-KJFCONNFF-WH	"F" Connector Keystone jack, Female/Female, White
1-KJUSBAFF-WH	USB Keystone jack, USB A, Female/Female, White

*CAT5E and CAT6 Jacks are available in 8 colors. Replace "XX" with code from below.
Black - BK • Blue - BL • Green - GR • Ivory - IV • Orange - OR • Red - RD • White - WH • Yellow - YW

Lynn Optilink patchcords stand out from competition with a unique snagless boot. They are guaranteed to pass channel testing, feature true gold 50um RJ45 contacts, and are UL listed. All Lynn Electronics' patch cables are compliant with EIA/TIA 568B standards.

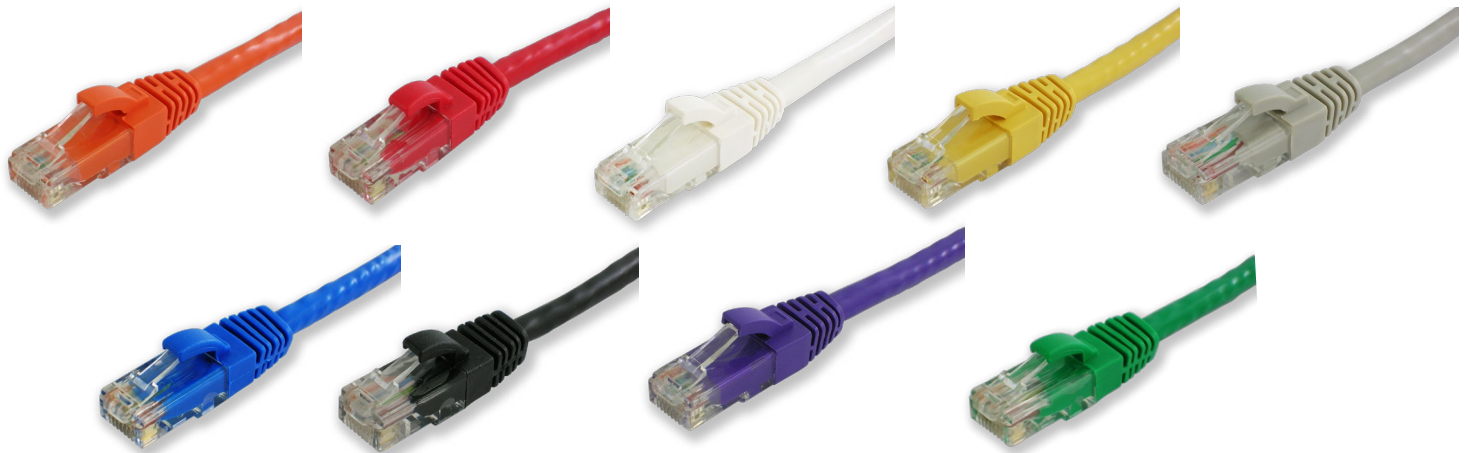
CAT5E and CAT6 Patch Cables

Construction:

- CAT5E or CAT6 24AWG UTP, CM rated, high performance stranded patch cable
- High performance CAT5E or CAT6 RJ45 plugs with gold plated contacts
- Ultra flexible, sturdy jacket
- 9 Vibrant colored jackets available

CAT5E Patch Cable - Snagless Molded Boots

	Black	Blue	Gray	Green	Orange	Purple	Red	White	Yellow
1 ft.	ECAT5-4PR-01-BKB	ECAT5-4PR-01-BLB	ECAT5-4PR-01-GYB	ECAT5-4PR-01-GRB	ECAT5-4PR-01-ORB	ECAT5-4PR-01-PUB	ECAT5-4PR-01-RDB	ECAT5-4PR-01-WHB	ECAT5-4PR-01-YEB
3 ft.	ECAT5-4PR-03-BKB	ECAT5-4PR-03-BLB	ECAT5-4PR-03-GYB	ECAT5-4PR-03-GRB	ECAT5-4PR-03-ORB	ECAT5-4PR-03-PUB	ECAT5-4PR-03-RDB	ECAT5-4PR-03-WHB	ECAT5-4PR-03-YEB
5 ft.	ECAT5-4PR-05-BKB	ECAT5-4PR-05-BLB	ECAT5-4PR-05-GYB	ECAT5-4PR-05-GRB	ECAT5-4PR-05-ORB	ECAT5-4PR-05-PUB	ECAT5-4PR-05-RDB	ECAT5-4PR-05-WHB	ECAT5-4PR-05-YEB
7 ft.	ECAT5-4PR-07-BKB	ECAT5-4PR-07-BLB	ECAT5-4PR-07-GYB	ECAT5-4PR-07-GRB	ECAT5-4PR-07-ORB	ECAT5-4PR-07-PUB	ECAT5-4PR-07-RDB	ECAT5-4PR-07-WHB	ECAT5-4PR-07-YEB
10 ft.	ECAT5-4PR-10-BKB	ECAT5-4PR-10-BLB	ECAT5-4PR-10-GYB	ECAT5-4PR-10-GRB	ECAT5-4PR-10-ORB	ECAT5-4PR-10-PUB	ECAT5-4PR-10-RDB	ECAT5-4PR-10-WHB	ECAT5-4PR-10-YEB
14 ft.	ECAT5-4PR-14-BKB	ECAT5-4PR-14-BLB	ECAT5-4PR-14-GYB	ECAT5-4PR-14-GRB	ECAT5-4PR-14-ORB	ECAT5-4PR-14-PUB	ECAT5-4PR-14-RDB	ECAT5-4PR-14-WHB	ECAT5-4PR-14-YEB
25 ft.	ECAT5-4PR-25-BKB	ECAT5-4PR-25-BLB	ECAT5-4PR-25-GYB	ECAT5-4PR-25-GRB	ECAT5-4PR-25-ORB	ECAT5-4PR-25-PUB	ECAT5-4PR-25-RDB	ECAT5-4PR-25-WHB	ECAT5-4PR-25-YEB
50 ft.	ECAT5-4PR-50-BKB	ECAT5-4PR-50-BLB	ECAT5-4PR-50-GYB	ECAT5-4PR-50-GRB	ECAT5-4PR-50-ORB	ECAT5-4PR-50-PUB	ECAT5-4PR-50-RDB	ECAT5-4PR-50-WHB	ECAT5-4PR-50-YEB
100 ft.	ECAT5-4PR-100BKB	ECAT5-4PR-100BLB	ECAT5-4PR-100GYB	ECAT5-4PR-100GRB	ECAT5-4PR-100ORB	ECAT5-4PR-100PUB	ECAT5-4PR-100RDB	ECAT5-4PR-100WHB	ECAT5-4PR-100YEB



CAT6 Patch Cable - Snagless Molded Boots

	Black	Blue	Gray	Green	Orange	Purple	Red	White	Yellow
1 ft.	CAT6-01-BKB	CAT6-01-BLB	CAT6-01-GYB	CAT6-01-GRB	CAT6-01-ORB	CAT6-01-PUB	CAT6-01-RDB	CAT6-01-WHB	CAT6-01-YEB
3 ft.	CAT6-03-BKB	CAT6-03-BLB	CAT6-03-GYB	CAT6-03-GRB	CAT6-03-ORB	CAT6-03-PUB	CAT6-03-RDB	CAT6-03-WHB	CAT6-03-YEB
5 ft.	CAT6-05-BKB	CAT6-05-BLB	CAT6-05-GYB	CAT6-05-GRB	CAT6-05-ORB	CAT6-05-PUB	CAT6-05-RDB	CAT6-05-WHB	CAT6-05-YEB
7 ft.	CAT6-07-BKB	CAT6-07-BLB	CAT6-07-GYB	CAT6-07-GRB	CAT6-07-ORB	CAT6-07-PUB	CAT6-07-RDB	CAT6-07-WHB	CAT6-07-YEB
10 ft.	CAT6-10-BKB	CAT6-10-BLB	CAT6-10-GYB	CAT6-10-GRB	CAT6-10-ORB	CAT6-10-PUB	CAT6-10-RDB	CAT6-10-WHB	CAT6-10-YEB
14 ft.	CAT6-14-BKB	CAT6-14-BLB	CAT6-14-GYB	CAT6-14-GRB	CAT6-14-ORB	CAT6-14-PUB	CAT6-14-RDB	CAT6-14-WHB	CAT6-14-YEB
25 ft.	CAT6-25-BKB	CAT6-25-BLB	CAT6-25-GYB	CAT6-25-GRB	CAT6-25-ORB	CAT6-25-PUB	CAT6-25-RDB	CAT6-25-WHB	CAT6-25-YEB
50 ft.	CAT6-50-BKB	CAT6-50-BLB	CAT6-50-GYB	CAT6-50-GRB	CAT6-50-ORB	CAT6-50-PUB	CAT6-50-RDB	CAT6-50-WHB	CAT6-50-YEB

- All CAT5E/CAT6 patch cables are available in a non-booted version also.
- Remove the "B" after the color designation for the non-booted part number.
- Custom lengths available.

Optilink+ 5E, Optilink+ 6 and Optilink+ 6A patch cables by Lynn Electronics are manufactured in the USA and comply with the TAA (Trade Agreements Act) and the BAA (Buy American Act). Designed with the IT professional in mind, Optilink patch cables feature a low profile snagless clip style strain relief that sits flush to the RJ45 connector. This makes it ideal for use in high density patch panels and switches. All Optilink patch cables can be customized for length, jacket color, boot color, jacket type and brand specific cabling. Custom configurations are available in straight, crossover, and rolled wiring.

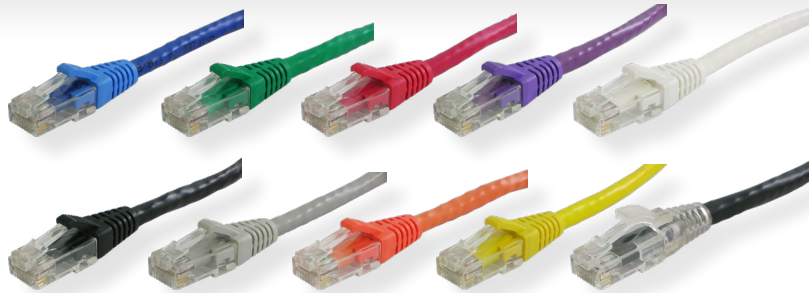
CAT5E and CAT6 Patch Cables

Construction:

- CAT5E, CAT6 and CAT6E 4 pair UTP, CM rated, high performance stranded patch cable
- High performance CAT5E and CAT6 RJ45 plugs with gold plated contacts
- Low profile snagless clip style strain relief available in 10 colors
- 16 Vibrant colored jackets available
- Ultra flexible, sturdy jacket

Features:

- BAA and TAA compliant
- Made in the USA
- Each cable 100% tested



Part Number Matrix

O	L	Cable Mfg	Construction	Cable Type	Jacket Color	Boot Color	Length
K		Berk-Tek	10 = CAT5E RJ45 568B	A = CAT5E Stranded UTP	BK = Black	K = Black	
G		Generic	12 = CAT5E RJ45 568A/B Crossover	C = CAT6 Stranded UTP	BL = Blue	B = Blue	
Q		Quabbin	20 = CAT6 RJ45 568B	G = CAT6A Stranded FTP	GR = Green	N = Green	
		Other manufacturers available	22 = CAT6 RJ45 568A/B Crossover	K = CAT5E Stranded FTP	GY = Gray	G = Gray	
			25 = CAT6A RJ45 568B	L = CAT6E Stranded FTP	OR = Orange	O = Orange	
			26 = CAT6E RJ45 568B	O = CAT6A Stranded UTP	PU = Purple	V = Purple	
			Other constructions available	P = Mini 28AWG CAT6 Stranded UTP	RD = Red	R = Red	
				S = Mini 28AWG CAT6A Stranded UTP	WH = White	W = White	
				Other constructions available	YE = Yellow	Y = Yellow	
					Other Colors available	C = Clear	
						X = No Boot	

CAT6A Patch Cables

Lynn Electronics CAT6A are manufactured utilizing high performance CAT6A cable and plugs. Available in shielded and unshielded versions. Customer specific cable and connectors may be used upon request.

Construction:

- CAT6A 4 pair UTP, CM rated, high performance stranded patch cable
- High performance CAT6A RJ45 plugs with gold plated contacts
- Various shielded constructions available

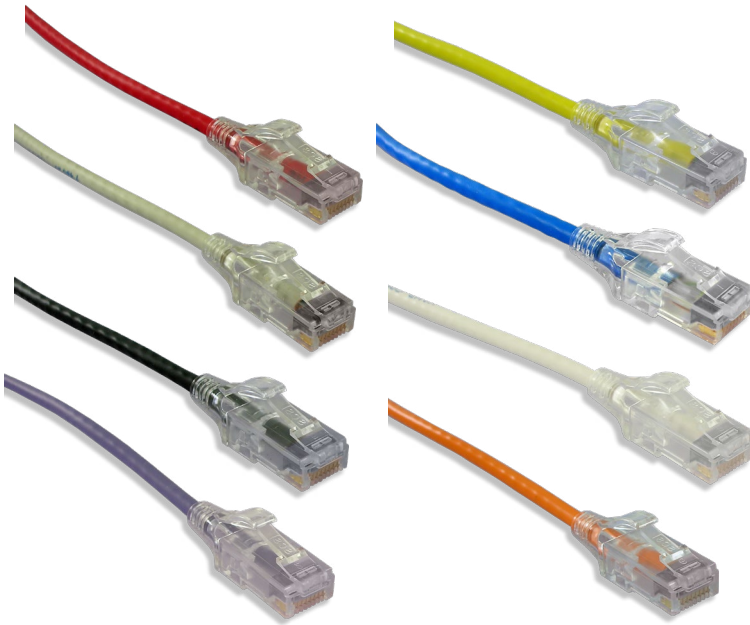
Features:

- BAA and TAA compliant
- Made in the USA
- Each cable 100% tested



Lynn Electronics 28AWG Mini CAT6/CAT6A are manufactured utilizing high performance CAT6/CAT6A cable and plugs. Featuring a reduced diameter, the Mini CAT6/CAT6A maximizes air flow and provides increased cable density making them perfect for top of the rack applications in the data center. The reduced overall diameter and smaller bend radius makes routing and installation in cable management panels and high density applications quicker and easier.

28AWG Mini CAT6 and CAT6A Patch Cables



Construction:

- CAT6/CAT6A 4 pair UTP, CM rated, high performance 28 AWG stranded patch cable
- High performance CAT6/CAT6A RJ45 plugs with integral clear slimline boot
- Available in plenum

Features and Benefits:

- 70% the size of standard CAT6/CAT6A
- Superior flexibility
- Improved cable density and air flow
- Each cable 100% tested

CAT6 Part Number

	Black	Blue	Gray	Green	Orange	Purple	Red	White	Yellow
1 ft.	OLG20PBKC-001	OLG20PBLC-001	OLG20PGYC-001	OLG20PGRC-001	OLG20PORC-001	OLG20PPUC-001	OLG20PRDC-001	OLG20PWHC-001	OLG20PYEC-001
3 ft.	OLG20PBKC-003	OLG20PBLC-003	OLG20PGYC-003	OLG20PGRC-003	OLG20PORC-003	OLG20PPUC-003	OLG20PRDC-003	OLG20PWHC-003	OLG20PYEC-003
5 ft.	OLG20PBKC-005	OLG20PBLC-005	OLG20PGYC-005	OLG20PGRC-005	OLG20PORC-005	OLG20PPUC-005	OLG20PRDC-005	OLG20PWHC-005	OLG20PYEC-005
7 ft.	OLG20PBKC-007	OLG20PBLC-007	OLG20PGYC-007	OLG20PGRC-007	OLG20PORC-007	OLG20PPUC-007	OLG20PRDC-007	OLG20PWHC-007	OLG20PYEC-007
10 ft.	OLG20PBKC-010	OLG20PBLC-010	OLG20PGYC-010	OLG20PGRC-010	OLG20PORC-010	OLG20PPUC-010	OLG20PRDC-010	OLG20PWHC-010	OLG20PYEC-010
14 ft.	OLG20PBKC-014	OLG20PBLC-014	OLG20PGYC-014	OLG20PGRC-014	OLG20PORC-014	OLG20PPUC-014	OLG20PRDC-014	OLG20PWHC-014	OLG20PYEC-014
25 ft.	OLG20PBKC-025	OLG20PBLC-025	OLG20PGYC-025	OLG20PGRC-025	OLG20PORC-025	OLG20PPUC-025	OLG20PRDC-025	OLG20PWHC-025	OLG20PYEC-025

CAT6A Part Number

	Black	Blue	Gray	Green	Orange	Purple	Red	White	Yellow
1 ft.	OLG25SBKC-001	OLG25SBLC-001	OLG25SGYC-001	OLG25SGRC-001	OLG25SORC-001	OLG25SPUC-001	OLG25SRDC-001	OLG25SWHC-001	OLG25SYEC-001
3 ft.	OLG25SBKC-003	OLG25SBLC-003	OLG25SGYC-003	OLG25SGRC-003	OLG25SORC-003	OLG25SPUC-003	OLG25SRDC-003	OLG25SWHC-003	OLG25SYEC-003
5 ft.	OLG25SBKC-005	OLG25SBLC-005	OLG25SGYC-005	OLG25SGRC-005	OLG25SORC-005	OLG25SPUC-005	OLG25SRDC-005	OLG25SWHC-005	OLG25SYEC-005
7 ft.	OLG25SBKC-007	OLG25SBLC-007	OLG25SGYC-007	OLG25SGRC-007	OLG25SORC-007	OLG25SPUC-007	OLG25SRDC-007	OLG25SWHC-007	OLG25SYEC-007
10 ft.	OLG25SBKC-010	OLG25SBLC-010	OLG25SGYC-010	OLG25SGRC-010	OLG25SORC-010	OLG25SPUC-010	OLG25SRDC-010	OLG25SWHC-010	OLG25SYEC-010
14 ft.	OLG25SBKC-014	OLG25SBLC-014	OLG25SGYC-014	OLG25SGRC-014	OLG25SORC-014	OLG25SPUC-014	OLG25SRDC-014	OLG25SWHC-014	OLG25SYEC-014
25 ft.	OLG25SBKC-025	OLG25SBLC-025	OLG25SGYC-025	OLG25SGRC-025	OLG25SORC-025	OLG25SPUC-025	OLG25SRDC-025	OLG25SWHC-025	OLG25SYEC-025

High Speed Data Storage Cables

Lynn Electronics carries a full line of high speed data storage cables. High speed data storage cables are the perfect solution for today's data centers where bandwidth and data throughput are in high demand.

- SFP and SFP+ cables
- QSFP+ cables
- Infiniband cables
- CX4 and CXP cables
- Fibre Channel cables
- SAS, Mini SAS and Mini SAS HD cables
- Twinax and Active Optical available
- Programmable and custom coded for Cisco, Arista, and Juniper switches



SFP Optical Transceivers



SFP Optical Transceivers

MC-1600C-12	12" Bay 19" rack mount chassis with dual redundant power supplies, 75 watt
MC-SFP-SM10K	Singlemode 10KM SFP, LC Connectors
MC-SFP-SM40K	Singlemode 40KM SFP, LC Connectors
MC-SFP-SM60K	Singlemode 60KM SFP, LC Connectors
MC-SFP-SM80K	Singlemode 80KM SFP, LC Connectors
MC-SFP-SM100K	Singlemode 100KM SFP, LC Connectors
MC-SFP-SM120K	Singlemode 120KM SFP, LC Connectors

Lynn Electronics TEC Optix Solutions division manufactures and stocks a complete line of media converters, network switches, SFP's and XFP's to fill the demand in today's networks running both fiber and copper structured solutions. TEC Optix media converters and switches are among the most functional, versatile and user friendly on the market today.

TEC Optix Media Converters

- Auto negotiation and auto MDIX
- LED indication: PWR/ACT/LNK/FDX/SPD/COL
- Store and forward mechanism
- Link fault pass through on all fiber ports
- Lifetime performance warranty
- Chassis or wall mountable
- 1024 MAC address
- IEEE 802.3 10BaseT, 802.3u 1000BaseTX, 100BaseFX compliant

10/100 Fast Ethernet Converters

MC-100SC-MM	10/100BaseT/TX to 100BaseFX Multimode with SC connectors, 2 km
MC-100ST-MM	10/100BaseT/TX to 100BaseFX Multimode with ST connectors, 2 km
MC-120SC-MM	10/100BaseT/TX to 100BaseFX Singlemode with SC connectors, 30 km
MC-MINISC-MM	10/100BaseT/TX to 100BaseFX Multimode with SC connectors, compact desktop size, 2 km
MC-MINIST-MM	10/100BaseT/TX to 100BaseFX Multimode with ST connectors, compact desktop size, 2 km
MC-MINISC-SM	10/100BaseT/TX to 100BaseFX Singlemode with SC connectors, compact desktop size, 30 km



10/100/1000 Gigabit Converters

MC-1000SC-MM	1000BaseT to 1000BaseSX Multimode with SC connectors, 220M/550M
MC-1000SC-SM	1000BaseT to 1000BaseLX Singlemode with SC connectors, 10 km
MC-1500LC-MM	10/100/1000BaseT to 1000BaseSX (SFP) Multimode with LC connectors, 220M/550M
MC-1500LC-SM	10/100/1000BaseT to 1000BaseLX (SFP) Singlemode with LC connectors, 10 km
MC-1500SC-MM	10/100/1000BaseT to 1000BaseSX Multimode with SC connectors, 220M/550M
MC-1500SC-SM	10/100/1000BaseT to 1000BaseLX Singlemode with SC connectors, 10 km



Network Switches

10/100 entry level unmanaged switches

LY-SF1005D	5 Port 10/100 desktop switch
LY-SF1008D	8 Port 10/100 desktop switch
LY-SF1016	16 Port 10/100 19" rack mount switch
LY-SF1024	24 Port 10/100 19" rack mount switch
LY-SF1048	48 Port 10/100 19" rack mount switch



10/100/1000 unmanaged gigabit switches

LY-SG1005D	5 Port 10/100/1000 desktop switch
LY-SG1008D	8 Port 10/100/1000 desktop switch
LY-SG1016	16 Port 10/100/1000 19" rack mount switch
LY-SG1024	24 Port 10/100/1000 19" rack mount switch
LY-SG1048	48 Port 10/100/1000 19" rack mount switch

Power Over Ethernet Switch and Injector

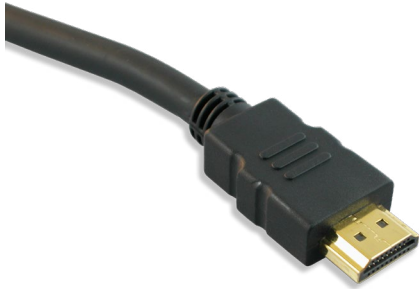
LY-SF1008P	8 Port POE switch, 4 10/100 ports and 4 POE ports
LY-SG1008P	8 Port POE switch, 4 10/100/1000 ports and 4 POE ports
LY-SG3424P	24 Port POE switch, 24 10/100/1000 POE ports and 4 combo SFP slots
LY-POE-200	POE Kit (1 injector and 1 splitter)

10/100/1000 L2 managed switches

LY-SG3210	9 Port 10/100/1000 desktop switch with 2 SFP slots
LY-SG3216	16 Port 10/100/1000 19" rack mount switch with 2 combo SFP slots
LY-SG3424	24 Port 10/100/1000 19" rack mount switch with 4 combo SFP slots

Lynn Electronics carries a complete line of Audio/Video and USB cables and accessories. Our A/V product offering is the perfect choice for any of today's A/V installations.

HDMI Cables



Part Number	Description
HDMI-3F	HDMI High Speed Male to Male with Ethernet, V1.4, 3ft.
HDMI-6F	HDMI High Speed Male to Male with Ethernet, V1.4, 6ft.
HDMI-10F	HDMI High Speed Male to Male with Ethernet, V1.4, 10ft.
HDMI-15F	HDMI High Speed Male to Male with Ethernet, V1.4, 15ft.
HDMI-20F	HDMI High Speed Male to Male with Ethernet, V1.4, 20ft.
HDMI-25F	HDMI High Speed Male to Male with Ethernet, V1.4, 25ft.
HDMI-30F	HDMI High Speed Male to Male with Ethernet, V1.4, CL2 Rated Jacket for In Wall Use 30ft.
HDMI-35F	HDMI High Speed Male to Male with Ethernet, V1.4, CL2 Rated Jacket for In Wall Use 35ft.
HDMI-40F	HDMI High Speed Male to Male with Ethernet, V1.4, CL2 Rated Jacket for In Wall Use 40ft.
HDMI-45F	HDMI High Speed Male to Male with Ethernet, V1.4, CL2 Rated Jacket for In Wall Use 45ft.
HDMI-50F	HDMI High Speed Male to Male with Ethernet, V1.4, CL2 Rated Jacket for In Wall Use 50ft.
HDMI-60F	HDMI High Speed Male to Male with Ethernet, V1.4, CL2 Rated Jacket for In Wall Use 60ft.
HDMI-75F	HDMI High Speed Male to Male with Ethernet, V1.4, CL2 Rated Jacket for In Wall Use 75ft.
HDMI-100F	HDMI High Speed Male to Male with Ethernet, V1.4, CL2 Rated Jacket for In Wall Use 100ft.

* Also available in Plenum jacket construction

SVGA Cables



Part Number	Description
SVGAMM-XXXF	SVGA HD15 Male to Male with Ferrites. Available in 6, 10, 15, 25, 35, 50, 75 and 100ft.
SVGAMF-XXXF	SVGA HD15 Male to Female with Ferrites. Available in 6, 10, 15, 25, 50, 75 and 100ft.
SVGA-3.5-MM-XXXF	SVGA HD15 Male to Male + 3.5mm Stereo Audio. Available in 3, 6, 10, 15, 25, 35, 50, 75 and 100ft.

* Also available in Plenum jacket construction

Audio Cables



Part Number	Description
3.5MM-XXXF	3.5mm Male to Male Stereo Audio Cable. Available in 1, 3, 6, 12, 25, 35, 50, 75 and 100ft.
3.5MF-XXXF	3.5mm Male to Female Stereo Audio Extension Cable. Available in 6, 12, 25, 35, 50, 75 and 100ft.
RCA-A-XXX	Dual RCA (Left & Right) Stereo Audio. Available in 3, 6, 12, 25, 50, 75 and 100ft.
RCA-AV-XXX	Triple RCA (Left & Right) Stereo Audio + Video. Available in 3, 6, 12, 25, 50, 75 and 100ft.

* Also available in Plenum jacket construction

A/V Extenders and Switches



Part Number	Description
HDMI-EXT	HDMI Extender Over CAT5E/CAT6. 1080P upto 133ft, 1080i upto 200ft
VGA3.5-EXT-200M	SVGA + Audio Extender over CAT5E/CAT6. Max. Distance of 200M. Max resolution 1920x1440
VGA-EXT-100M	SVGA Extender over CAT5E/CAT6. Max. Distance of 100M. Max resolution 1280x1024
HDMI4X1	4 HDMI Sources to 1 HDMI Display, Switch.
HDMI5X1	5 HDMI Sources to 1 HDMI Display, Switch.
HDMI1X2-SP	1 HDMI Source to 2 HDMI Displays, Splitter
HDMI1X4-SP	1 HDMI Source to 4 HDMI Displays, Splitter

* Also available in Plenum jacket construction

Lynn Electronics can custom manufacture 25 pair hydra breakout cables, pre-wired patch panels, 66 blocks and 110 blocks to cut down on installation time for both phone and network installations.

25 Pair Hydra Assemblies

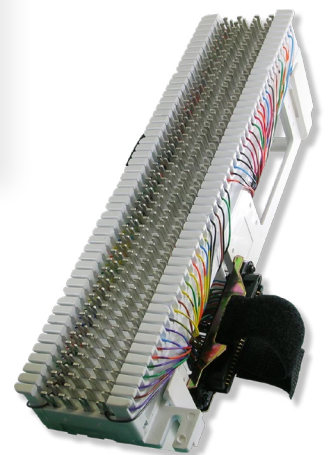
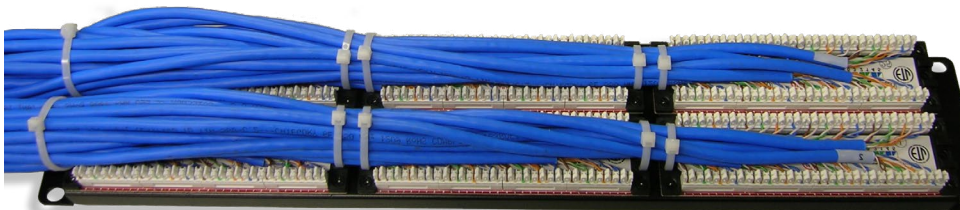
- CAT3 and CAT5E 25 pair UTP cable
- 25 Pr. CAT3 or CAT5E connectors on one end
- 90°, 110° and 180° Hoods available
- RJ45, RJ11 and RJ12 available on the individual legs
- Mesh sleeving over individual legs for protection
- Custom breakout lengths
- 100% tested
- Fully BAA and TAA Compliant
- Plenum jacket available
- Made in the USA

Part Number Matrix

H	Conn. A	Conn. B	# of Legs	Wiring	Breakout	Cable Type	Length
P3 = 25PR CAT3 90° Male C3 = 25PR CAT3 90° Female PA = 25PR CAT5E 90° Male AL = 25PR CAT5E 110° Male Left Exit AR = 25PR CAT5E 110° Male Right Exit CP = 25PR CAT5E 180° Male JA = 25PR CAT5E 90° Female 4 = RJ11 (6P4C) 6 = RJ12 (6P6C) 8 = RJ45 (8P8C)		4 = RJ11 (6P4C) 6 = RJ12 (6P6C) 8 = RJ45 (8P8C)	25 24 12 8 6	U2 = USOC 2 Wire U4 = USOC 4 Wire U6 = USOC 6 Wire U8 = USOC 8 Wire A8 = 586A B8 = 568B T = 10BaseT		12 = 12 inch legs 18 = 18 inch legs 24 = 24 inch legs 36 = 36 inch legs ST = Staggered legs	L3 = CAT3 L5 = CAT5E

Pre-Wired Patch Panels, 66 Blocks and 110 Blocks

- 12, 24, 48 and 96 port CAT5E and CAT6 patch panels terminated with customer specific cabling lengths
- 66 Blocks terminated with custom length tails or with RJ21's mounted onto the bracket
- 50, 100 and 300 Pair 110 blocks available terminated with top or bottom exit custom length tails
- Made in the USA
- Fully BAA and TAA Compliant
- 100% tested



Lynn Electronics offers a full line of 25 pair Telco assemblies. All assemblies conform to telephone industry standards and are UL type CMR/PVC or CMP plenum as required.

CAT3 25 Pair Telco Assemblies

- CAT3 25 pair UTP cable
- Tyco 50 position 25 Pr. connectors
- Machine terminated
- Made in the USA
- 100% tested
- Fully BAA and TAA compliant
- Shielded and plenum versions available
- 32, 50, 100, 200 and 300 Pair cables available

CAT3 Telco Part Number Matrix

25	Conn. End A	Conn. End B	Length	L3
P	= 25 Pr. Male	P = 25 Pr. Male		
C	= 25 Pr. Female	C = 25 Pr. Female		
X		X = Open/Blunt		

- Bail locks, lock latches, 180° hoods and high profile hoods available.



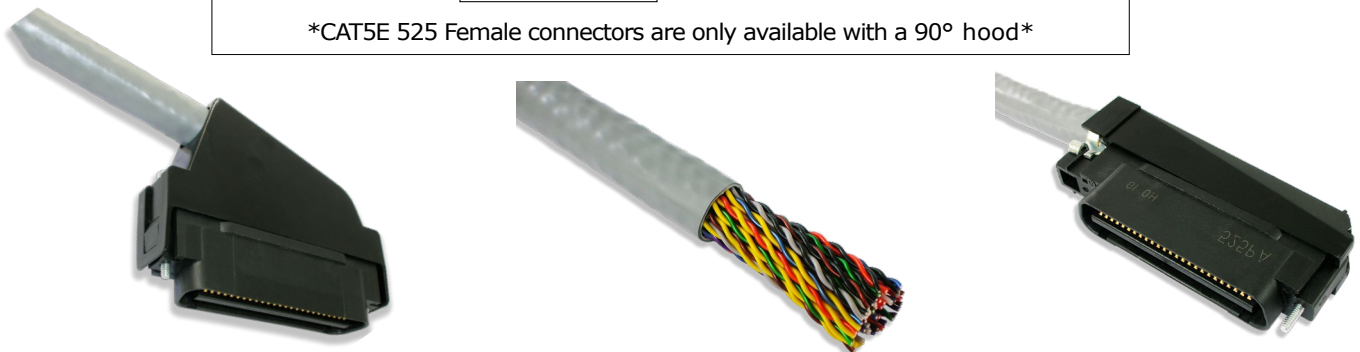
CAT5E 25 Pair Telco Assemblies

- CAT5E Powersum 25 pair UTP cable
- Systimax 50 position 525 connectors
- Lucent/Avaya machine terminated
- 90°, 110° and 180° Hoods available
- 100% tested
- Fully BAA and TAA Compliant
- Plenum jacket available
- Made in the USA

525 CAT5E Telco Part Number Matrix

525	Conn. End A	Conn. End B	Length	Hood End A	Hood End B
P	= 525 Male	P = 525 Male	90 = 90° Exit	90 = 90° Exit	
C	= 525 Female	C = 525 Female	110 = 110° Exit	110 = 110° Exit	
X		X = Open/Blunt	180 = 180° Exit	180 = 180° Exit	

CAT5E 525 Female connectors are only available with a 90° hood



Lynn Electronics has been manufacturing and supplying modular telephone cords and accessories since 1964. As a leader in the industry, our products are made from only the finest raw materials. All modular cords and handset cords are available individually bagged, blister packed or bulk packaged. Lynn Electronics telephone cords and accessories are built to conform to industry standards.

Replacement Handset Cords

Replacement Handset Coil Cords

Part Number	Description
L-H4DU-06-XX	6ft Replacement handset cord
L-H4DU-09-XX	9ft Replacement handset cord
L-H4DU-12-XX	12ft Replacement handset cord
L-H4DU-15-XX	15ft Replacement handset cord
L-H4DU-25-XX	25ft Replacement handset cord

Replace XX with color abbreviation from below.

Color Abbreviation Matrix

AL = Almond	DG = Dark Gray	GB = Gloss Black	OY = Oyster
BE = Beige	DJ = Light Gray	GL = Matte Platinum	PG = Pearl Gray
BK = Black	DQ = Matte Pearl Gray	HH = Matte Charcoal	PL = Platinum
CB = Cocoa Brown	ER = Chameleon Gray	IV = Ivory	SP = Smokey Pearl
CG = Charcoal Gray	ET = Vanilla	LA = Light Ash	SW = Special White
CR = Cherry Red	FB = Flat Black	MC = Misty Cream	WH = White
CQ = Dove Gray	FW = Gloss Charcoal	NG = NTG Gray	WW = Warm White



- H4DU Flat modular cordage
- High quality tinsel conductors
- Long lasting stretch and memory retraction
- True pre-coiled lengths
- 1:4 - 4:1 Reversed wiring
- 4P4C Modular connectors
- UL listed
- RoHS Compliant

Modular Telephone Line Cords

4 Conductor Line and Distribution Cords

Part Number	Description
L-D4BU-XX-SS*	6P4C RJ11 4 Conductor Silver Satin Flat Line Cord, 1:4, 4:1 Wired
L-D4QK-XX-SS	RJ11 4 Conductor to Spade Terminals Silver Satin Flat Line Cord
L-DW4A-XX-SE	RJ11 4 Conductor Round Distribution Cord, Single Ended
L-DW4A-XX-DE	RJ11 4 Conductor Round Distribution Cord, Double Ended, 1:1, 4:4 Wired

*4 Conductor line cords also available in 7 jacket colors. Replace "SS" with code from below.

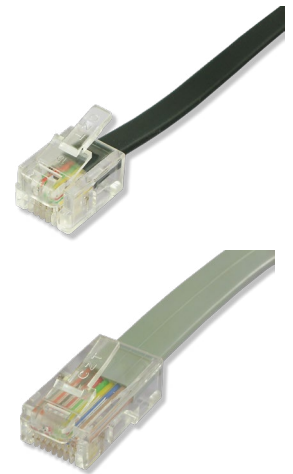
Clear - CL • Black - BK • Beige - BE • Ivory - IV • Light Ash - LA • White - WH

6 Conductor Line Cords

Part Number	Description
L-D6BU-XX-SS	6P6C RJ12 6 Conductor Silver Satin Flat Line Cord, 1:6, 6:1 Wired

8 Conductor Line and Distribution Cords

Part Number	Description
L-F8BU-XX-SS	8P8C RJ45 8 Conductor Silver Satin Flat Line Cord, 1:8, 8:1 Wired
L-F8BU-XX-REVSS	8P8C RJ45 8 Conductor Silver Satin Flat Line Cord, 1:1, 8:8 Wired
L-D8BU-XX-SS	8P8C RJ45 8 Conductor Silver Satin Round Line Cord, 1:8, 8:1 Wired
L-D8BU-XX-REV87	8P8C RJ45 8 Conductor Silver Satin Round Line Cord, 1:1, 8:8 Wired
L-DW8A-XX-SE	RJ45 8 Conductor Round Distribution Cord, Single Ended
L-DW8A-XX-DE	RJ45 8 Conductor Round Distribution Cord, Double Ended, 1:1, 8:8 Wired



Bulk Modular Flat Cordage

4 Conductor Bulk Line Cordage

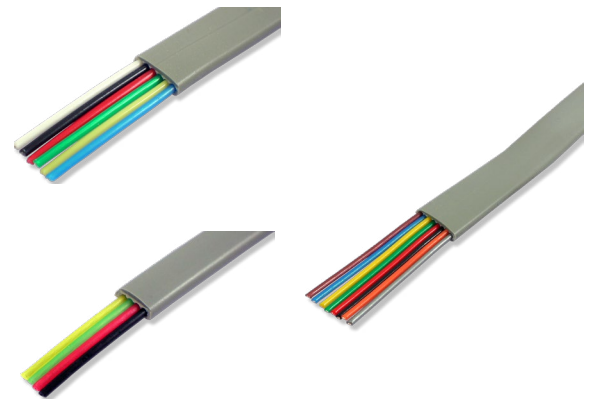
Part Number	Description
D4BU-CU26BC-SS	4 Cond. 26AWG BC, Flat Silver Satin 1000ft, UL Listed
D4BU-CU28-SS	4 Cond. 28AWG TC, Flat Silver Satin 1000ft, UL Listed
D4BU-CU26BC-BK	4 Cond. 26AWG BC, Flat Black 1000ft, UL Listed

6 Conductor Bulk Line Cordage

Part Number	Description
D6BU-CU26BC-SS	6 Cond. 26AWG BC, Flat Silver Satin 1000ft, UL Listed
D6BU-CU28-SS	6 Cond. 28AWG TC, Flat Silver Satin 1000ft, UL Listed
D6BU-CU26BC-BK	6 Cond. 26AWG BC, Flat Black 1000ft, UL Listed

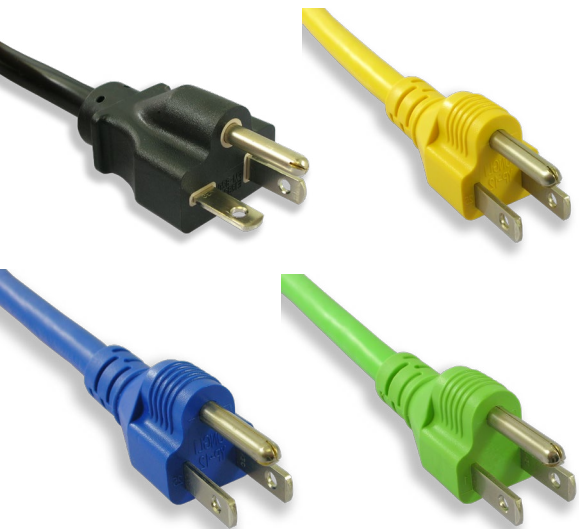
8 Conductor Bulk Line Cordage

Part Number	Description
F8LC-CU26BC-SS	8 Cond. 26AWG BC, Flat Silver Satin 1000ft, UL Listed
F8LC-SS	8 Cond. 28AWG TC, Flat Silver Satin 1000ft, UL Listed
F8LC-CU26BC-BK	8 Cond. 26AWG BC, Flat Black 1000ft, UL Listed



NEMA connectors and outlets are the standard power connection found in North America. Lynn Electronics carries a full line of straight blade and locking NEMA power cords for all power requirements. NEMA cords are available in various amperages as well as several jacket colors and lengths.

NEMA Straight Blade Power Cords



- SJT and SVT Jackets available
- 9 Different jacket colors available for C13 to 5-15P cords
- 100% tested for dielectric voltage withstand (Hi-Pot), polarization and continuity
- UL/cUL certified
- RoHS compliant

NEMA Power Cord Part Number Matrix

Conn. End A	Conn. End B	Amps	Jacket Color*	Length	F
C13 = C13	515P = 5-15P	10A = 10 Amps	Blank = Black		
C15 = C15	520P = 5-20P	13A = 13 Amps	BL = Blue		
C19 = C19	615P = 6-15P	15A = 15 Amps	GR = Green		
515P = 5-15P	620P = 6-20P	20A = 20 Amps	GY = Gray		
520P = 5-20P	515R = 5-15R		OR = Orange		
520P = 5-20P	520R = 5-20R		PU = Purple		
615P = 6-15P	615R = 6-15R		RD = Red		
620P = 6-20P	620R = 6-20R		WH = White		
			YE = Yellow		

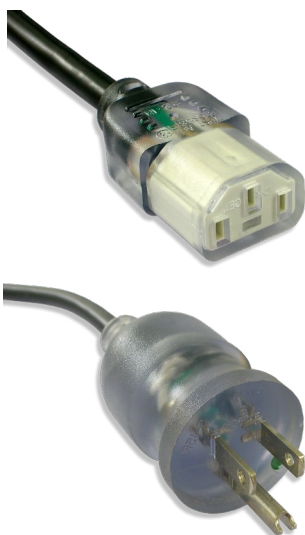
*Additional jacket colors only available for C13 to 5-15P cords

P-Lock Secure Power Cords

P-Lock secure power cords are designed with locking clips on both sides of the C14 connector. When used with a ServerTech Lockable CDU or Raritan SecureLock PDU the C14 will lock into the C13 providing a secure connection.



Hospital Grade Power Cords

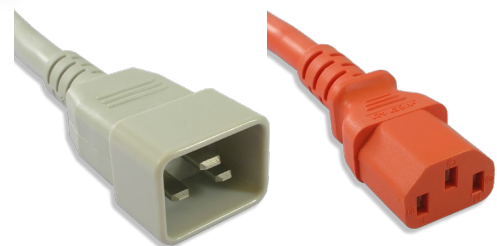
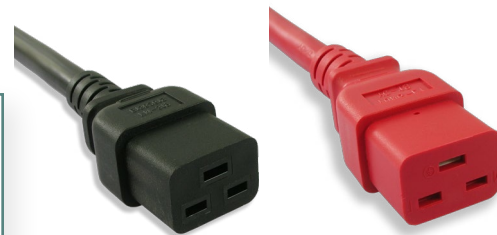


- SJT Jacket
- Solder terminations on terminal pins instead of crimp
- Solid ground pin provides greater strength
- Greater retention force on the live and neutral lines
- Separate ring clamp inside the mold providing enhanced wire retention
- 100% tested for dielectric voltage withstand (Hi-Pot), polarization and continuity
- UL/cUL certified
- RoHS compliant

IEC 60320 Power Cords

IEC 60320 power cords are most commonly found and used between servers, switches, power distribution units and other data center equipment in the data cabinet. Lynn Electronics carries a full line of IEC power cords in various connector styles, lengths and jacket colors to enable you to organize and manage your power distribution requirements.

- SJT Jacket
- 9 Different jacket colors available
- 100% tested for dielectric voltage withstand (Hi-Pot), polarization and continuity
- UL/cUL certified
- RoHS compliant

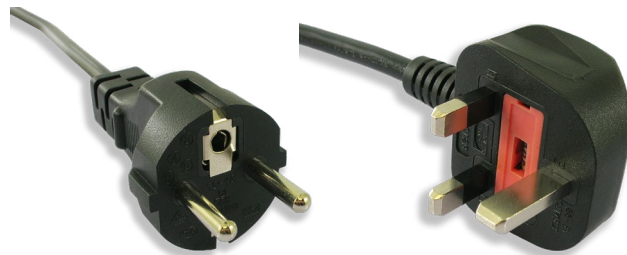


IEC 60320 Power Cord Part Number Matrix

Conn. End A	Conn. End B	Amps	Jacket Color	Length	F
C13 C14 C19	C14 C15 C19 C20	10A = 10 Amps 15A = 15 Amps 20A = 20 Amps	Blank = Black BL = Blue GR = Green GY = Gray OR = Orange PU = Purple RD = Red WH = White YE = Yellow		

International Power Cords













Lynn Electronics carries international power cords for the following regions and countries: Argentina, Australia, Brazil, China, Denmark, Europe, India, Israel, Italy, Japan, Korea, Taiwan, Switzerland, United Kingdom, South Africa, Saudi Arabia, Singapore, Russia, Hong Kong and Mexico. All international power cords are certified to each country's standards and are RoHS compliant.







Miscellaneous Power Cord and Power Related Products

- Industrial and multiphase IEC 60309 pin and sleeve power cables
- PDU cables and electrical drops
- Plug adapters and pigtails
- Portable outlets, reels and GFCI's
- Power stringers



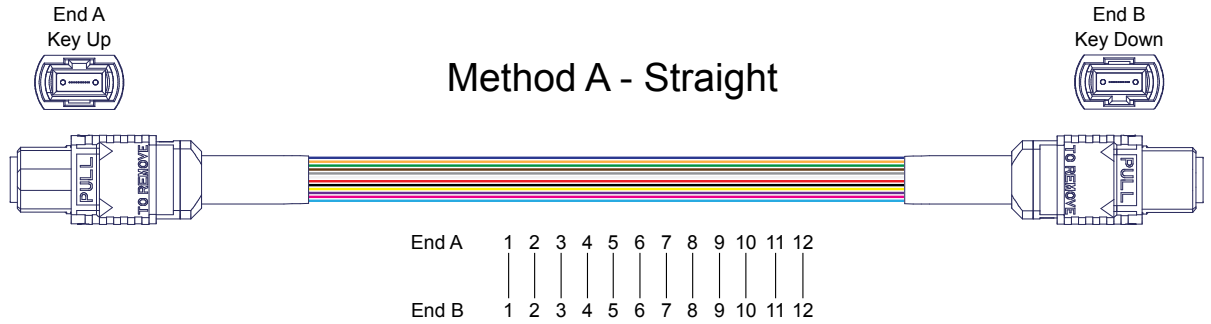
LC		SC		MTP	
UPC	APC	UPC	APC	Singlemode	Multimode
Simplex 	Simplex 	Simplex 	Simplex 	Male/Pinned 	Male/Pinned 
Duplex 	Duplex 	Duplex 	Duplex 	Female/Unpinned 	Female/Unpinned 

ST	FC	MTRJ	
Bayonet Connector	Threaded Connector	Male/Pinned	Female/Unpinned
			

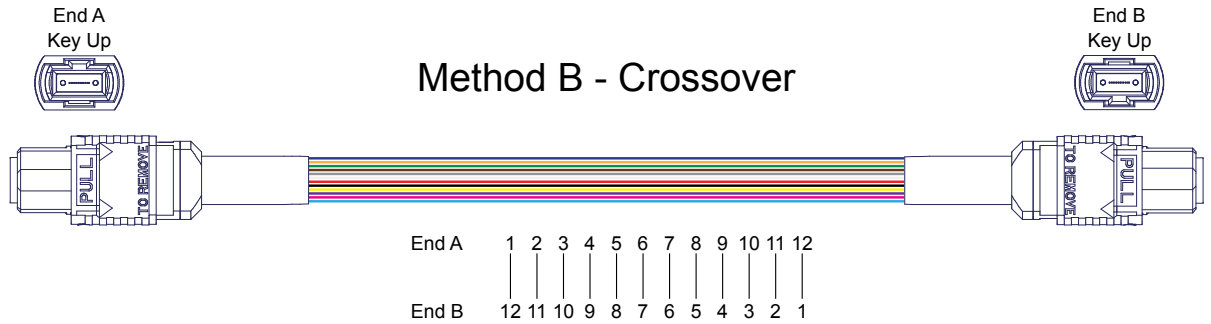
OM1	OM2	OM3	OM4	SM
Typically Orange	Typically Orange	Typically Aqua	Typically Aqua	Typically Yellow
62.5/125	50/125	50/125	50/125	9/125

MTP Polarity Guide

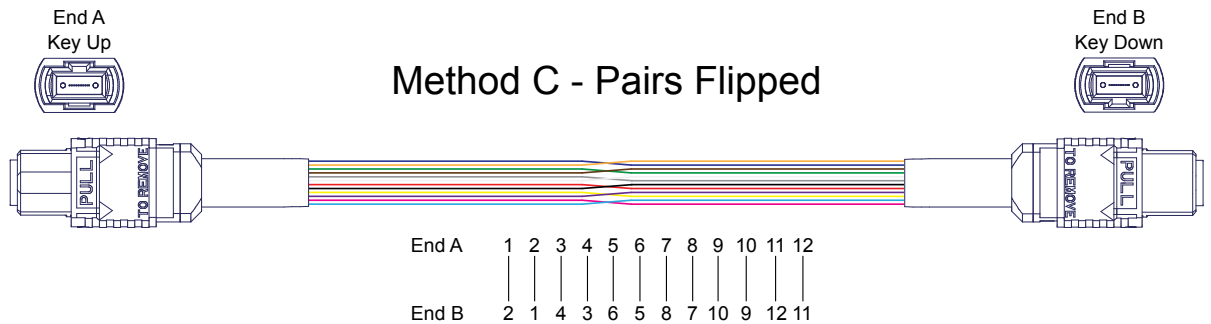
Method A		
POS.	End A	End B
1	BLUE	BLUE
2	ORANGE	ORANGE
3	GREEN	GREEN
4	BROWN	BROWN
5	SLATE	SLATE
6	WHITE	WHITE
7	RED	RED
8	BLACK	BLACK
9	YELLOW	YELLOW
10	VIOLET	VIOLET
11	ROSE	ROSE
12	AQUA	AQUA



Method B		
POS.	End A	End B
1	BLUE	AQUA
2	ORANGE	ROSE
3	GREEN	VIOLET
4	BROWN	YELLOW
5	SLATE	BLACK
6	WHITE	RED
7	RED	WHITE
8	BLACK	SLATE
9	YELLOW	BROWN
10	VIOLET	GREEN
11	ROSE	ORANGE
12	AQUA	BLUE



Method C		
POS.	End A	End B
1	BLUE	ORANGE
2	ORANGE	BLUE
3	GREEN	BROWN
4	BROWN	GREEN
5	SLATE	WHITE
6	WHITE	SLATE
7	RED	BLACK
8	BLACK	RED
9	YELLOW	VIOLET
10	VIOLET	YELLOW
11	ROSE	AQUA
12	AQUA	ROSE





East Coast

154 Railroad Drive
Ivyland, Pennsylvania 18974

West Coast

16782 Von Karman Avenue
Irvine, California 92606

Toll Free: 800-523-6075

Local: 215-355-8200

Fax: 215-357-8662

Email: sales@lynnelec.com

Website: www.lynnelec.com

Follow Us

