



inovonics[®]

Product Catalog: North America

Table of Contents

Market Solutions

1-2	Commercial Security
3-4	Senior Living
5	Multifamily Submetering
6	Commercial Monitoring

Transmitters

7-8	Pendant
9-10	Universal
11	Commercial Monitoring
12-13	Specialized
14-15	Motion Detector

Receivers

16	Serial
17	Add-On
18	IP
19-20	Panel Partner

Repeaters

21	Repeaters
----	-----------


Other Infrastructure

22	System Tools
23	Software

Appendix

24-26	Product Index
27	Accessory Index
28	Replacement Battery Index
29-30	Inovonics UL Certifications



NOTE: All products with a UL certification are labeled as such throughout the catalog with the  logo. For further details on Inovonics UL Certifications please see pages 29-30.

Commercial Security

Transmitters

Pendant

Part Number	UL Certification	Description
EN1223D	UL	Double-button, water-resistant pendant transmitter
EN1223S		Single-button, water-resistant pendant transmitter
EN1223S-BU		Single-button, water-resistant pendant transmitter - bulk 50
EN1223S-60*		Single-button, water-resistant pendant transmitter, 60 minute check in
EN1223S-60BU		Single-button, water-resistant pendant transmitter, 60 minute check in - bulk 50
EN1224		Four-button, multi-condition belt clip pendant
EN1224-ON		Four-button, multi-condition belt clip pendant with on/off
EN1233D		Double-button, pendant transmitter
		Single-button, pendant transmitter
EN1235D		Double-button, belt clip pendant transmitter
EN1235DF	UL	Double-button, fixed position hold up transmitter
EN1235S		Single-button, belt clip pendant transmitter
EN1235SF	UL	Single-button, fixed position hold up transmitter
EN1236D		Double-button, three condition belt clip pendant
EN1238D		Double-button, dual condition belt clip pendant

Universal

Part Number	UL Certification	Description
EN1210		Single input universal transmitter
EN1210-60*		Single input universal transmitter, 60 minute check in
EN1210-240-BU		Single input universal transmitter, 4 hour check in - bulk 50
EN1210-BU		Single input universal transmitter - bulk 50
EN1210EOL		Single input universal transmitter, EOL protection
EN1212		Dual input universal transmitter
EN1212-60*		Dual input universal transmitter, 60 minute check in
EN1215EOL	UL	Universal transmitter with wall tamper
EN1216		Dual input universal transmitter with wall tamper
EN1252		Long range, dual input universal transmitter

Commercial Monitoring

Part Number	UL Certification	Description
EN1721		Integrated temperature/humidity transmitter
EN1722		Temperature/humidity transmitter
EN1723		Dual input temperature transmitter
EN1723-BU		Dual input temperature transmitter - bulk 50
EN1751		Water detector
EN1752		Temperature detector

Specialized

Part Number	UL Certification	Description
EN1210W		Door/window transmitter with reed switch
EN1210W-60*		Door/window transmitter with reed switch, 60 minute check in
EN1215WEOL	UL	Door/window transmitter with wall tamper, reed switch and EOL protection
EN1244	UL	Smoke detector transmitter
EN1245	UL	Wireless CO detector
EN1247		Glassbreak detector transmitter
EN1249	UL	Billtrap transmitter

*UL 2560 fundamental device with UL unlisted component certification. Partners must achieve Emergency Call System certification from a Nationally Recognized Testing Laboratory to claim compliance with UL 2560.

Refer to pages 7-24 for product images and high level specifications.

Motion Detector

Part Number	UL Certification	Description
EN1260		Wall mount motion detector
EN1262		Motion detector with pet immunity
EN1261HT	UL	High traffic four element motion detector
EN1265		360° Ceiling mount motion detector

Receiver

Part Number	UL Certification	Description
EN4200	UL	Security only serial receiver

Add-On

Part Number	UL Certification	Description
EN4204R	UL	Four zone add-on receiver with relay outputs
EN4216MR	UL	16 zone multi-condition receiver with relay outputs
EN4232MR	UL	32 zone multi-condition receiver with relay outputs

Panel Partner

Part Number	UL Certification	Description
EN4200	UL	Serial receiver/interface kit for Bosch panel (D7212G, D7412G, D9412G, B3512, B4512, B5512, B6512, B8512G and B9512G)
EN4200	UL	Serial receiver/interface for Pacom field controllers (8002 controller)
EN4200	UL	Serial receiver/interface for Sonitrol panels (iBase, FlexiBase, FlexiP)
EN4200	UL	Serial receiver/interface for Interlogix panels (Verex Monitor XL)
EN7286NX		Serial receiver/interface for Interlogix (NetworkX NX-8, NX-8E, NX-6, NX-4)
EN7290	UL	Serial receiver/interface for Honeywell panel (VISTA-128/-250)
EN7290	UL	Serial receiver/interface for Johnson Controls panel (TYCMSM128, TYC-MSM250FB)

Repeaters

Repeater

Part Number	UL Certification	Description
EN5040		High power repeater
EN5040-T	UL	High power repeater with transformer

Other Infrastructure

System Tools

Part Number	UL Certification	Description
EN1210SK		Universal survey transmitter
EN1223SK		Pendant survey transmitter
EN7016		Wireless survey kit
EN7017		Survey kit and app

Senior Living

Transmitters

Pendant

Part Number	UL Certification	Description
EN1221S-60N*		Waterproof pendant with lanyard - <i>Senior living use only</i>
EN1221S-60NBU		Waterproof pendant with lanyard - bulk 50 - <i>Senior living use only</i>
EN1221S-60W*		Waterproof pendant with wristband - <i>Senior living use only</i>
EN1221S-60WBU		Waterproof pendant with wristband - bulk 10 - <i>Senior living use only</i>
EN1221S-60WLB		Waterproof pendant with long wristband - bulk 10 - <i>Senior living use only</i>
EN1223S		Single-button, water-resistant pendant transmitter
EN1223S-BU		Single-button, water-resistant pendant transmitter - bulk 50
EN1223S-60*		Single-button, water-resistant pendant transmitter, 60 minute check in
EN1223S-60BU		Single-button, water-resistant pendant transmitter, 60 minute check in - bulk 50

Universal

Part Number	UL Certification	Description
EN1210		Single input universal transmitter
EN1210-BU		Single input universal transmitter - bulk 50
EN1210-60*		Single input universal transmitter, 60 minute check in
EN1210-240		Single input universal transmitter, 4 hour check in
EN1210-240-BU		Single input universal transmitter, 4 hour check in - bulk 50
EN1210EOL		Single input universal transmitter, EOL protection
EN1212		Dual input universal transmitter
EN1212-60*		Dual input universal transmitter, 60 minute check in
EN1215EOL	UL	Universal transmitter with wall tamper
EN1216		Dual input universal transmitter with wall tamper
EN1252		Long range, dual input universal transmitter

Commercial Monitoring

Part Number	UL Certification	Description
EN1721		Integrated temperature/humidity transmitter
EN1722		Temperature/humidity transmitter
EN1723		Dual input temperature transmitter
EN1723-BU		Dual input temperature transmitter - bulk 50
EN1751		Water detector
EN1752		Temperature detector

Specialized

Part Number	UL Certification	Description
EN1210W		Door/window transmitter with reed switch
EN1210W-60*		Door/window transmitter with reed switch, 60 minute check in
EN1244	UL	Smoke detector transmitter
EN1245	UL	Wireless CO detector
EN1702		Current/voltage data transmitter
EN1941	UL	Dual input one-way RF module
EN1941-BU		Dual input one-way RF module - bulk 50
EN1941-60-BU		Dual input one-way RF module, 60 minute check in - bulk 50
EN1941-60XHR-BU		Dual input one-way RF module without header - bulk 50
EN1941XS*		One-way, serial data RF module
EN1941XS-BU		One-way, serial data RF module - bulk 50
EN3942XS		Serial data two-way RF module

*UL 2560 fundamental device with UL unlisted component certification. Partners must achieve Emergency Call System certification from a Nationally Recognized Testing Laboratory to claim compliance with UL 2560.

Motion Detector

Part Number	UL Certification	Description
EN1241-60*		Activity sensor, 60 minute check in
EN1260		Wall mount motion detector
EN1261HT	UL	High traffic four element motion detector
EN1262		Motion detector with pet immunity
EN1265		360° Ceiling mount motion detector

Receivers

Serial

Part Number	UL Certification	Description
EN4000		Universal serial receiver
EN6040-T*		Network coordinator with transformer

IP

Part Number	UL Certification	Description
EN6080*		Area control gateway

Repeaters

Repeater

Part Number	UL Certification	Description
EN5040		High power repeater
EN5040-T	UL	High power repeater with transformer
EN5040-20T*		High power repeater with transformer, 20 minute check in

Other Infrastructure

System Tools

Part Number	UL Certification	Description
EN1210SK		Universal survey transmitter
EN1223SK		Pendant survey transmitter
EN7016		Wireless survey kit
EN7017		Survey kit and app

*UL 2560 fundamental device with UL unlisted component certification. Partners must achieve Emergency Call System certification from a Nationally Recognized Testing Laboratory to claim compliance with UL 2560.

MultiFamily Submetering

Transmitters

Specialized

Part Number	Description
EN1501	Pulse meter transmitter
EN1501-EXT	Pulse meter transmitter board for integration
EN1501-XL	Pulse meter transmitter with extended life battery
EN1550EP	Encoder Pulse Transmitter

Receiver

Serial

Part Number	UL Certification	Description
EN4000		Universal serial receiver

IP

Part Number	UL Certification	Description
EN7580		TapWatch gateway
EN7581		TapWatch gateway lite

Repeaters

Repeater

Part Number	UL Certification	Description
EN5040		High power repeater
EN5040-T	UL	High power repeater with transformer

Other Infrastructure

System Tools

Part Number	Description
EN1210SK	Universal survey transmitter
EN1223SK	Pendant survey transmitter
EN7016	Wireless survey kit
EN7017	Survey kit and app

Software

Part Number	UL Certification	Description
TapWatch		TapWatch 3 software

Commercial Monitoring

Transmitters

Commercial Monitoring

Part Number	UL Certification	Description
EN1721		Integrated temperature/humidity transmitter
EN1722		Temperature/humidity transmitter
EN1723		Dual input temperature transmitter
EN1723-BU		Dual input temperature transmitter - bulk 50
EN1751		Water detector
EN1752		Temperature detector

Specialized

Part Number	UL Certification	Description
EN1702	UL	Current/voltage data transmitter
EN1941		Dual input one-way RF module
EN1941-BU		Dual input one-way RF module - bulk 50
EN1941-60-BU		Dual input one-way RF module, 60 minute check in - bulk 50
EN1941XS*		One-way, serial data RF module
EN1941XS-BU		One-way, serial data RF module - bulk 50
EN3942XS		Serial data two-way RF module

Receivers

Serial

Part Number	UL Certification	Description
EN4000		Universal serial receiver
EN6040-T*		Network coordinator with transformer

IP

Part Number	UL Certification	Description
EN4080		IP gateway

Repeaters

Repeater

Part Number	UL Certification	Description
EN5040		High power repeater
EN5040-T	UL	High power repeater with transformer

Other Infrastructure

System Tools

Part Number	UL Certification	Description
EN1210SK		Universal survey transmitter
EN1223SK		Pendant survey transmitter
EN7016		Wireless survey kit
EN7017		Survey kit and app

*UL 2560 fundamental device with UL unlisted component certification. Partners must achieve Emergency Call System certification from a Nationally Recognized Testing Laboratory to claim compliance with UL 2560.



EN1221S-60N Waterproof pendant with lanyard - *Senior living use only**

- Small, light and waterproof to IP67
- Bright lights signal alarm activation, alarm clearance and low battery
- Vibration feature confirms alarm activation
- Adjustable, breakaway lanyard
- Alarm clearance with magnetic card or button press pattern
- Lanyard included



EN1221S-60W Waterproof pendant with wristband - *Senior living use only**

- Small, light and waterproof to IP67
- Bright lights signal alarm activation, alarm clearance and low battery
- Vibration feature confirms alarm activation
- Adjustable, latex-free, silicone wristband
- Alarm clearance with magnetic card or button press pattern



EN1223D Double-button, water-resistant pendant transmitter

- Double-button design provides protection against accidental activation
- Lightweight, rugged design
- Necklace and belt clip included



EN1223S Single-button, water-resistant pendant transmitter

- Simple, single-button activation
- Lightweight, rugged design
- Necklace and belt clip included



EN1223S-60 Single-button, water-resistant pendant transmitter*

- Simple, single-button activation
- Lightweight, rugged design
- Necklace and belt clip included
- 60 minute check in



EN1224 Four-button, multi-condition belt clip pendant

- Activates four different alarm conditions
- Belt clip included
- Easily mounted for fixed position signaling



EN1224-ON Four-button, multi-condition belt clip pendant with on/off

- Activates four different alarm conditions
- Easily mounted for fixed position signaling
- Belt clip is not included



EN1233D Double-button, pendant transmitter

- Double-button design provides protection against accidental activation
- Necklace included
- Easily mounted for fixed position signaling



EN1233S Single-button, pendant transmitter

- Simple, single-button activation
- Necklace included
- Easily mounted for fixed position signaling



EN1235D Double-button, belt clip pendant transmitter

- Double-button design provides protection against accidental activation
- Belt clip included
- Available as fixed mount with back tamper (EN1235DF)



EN1235DF Double-button, fixed position hold up transmitter ^{UL}

- Double-button design helps prevent false alarms
- Includes back tamper for secure fixed position alarm signaling
- LED flashes with all transmissions, ensuring operation at a glance



EN1235S Single-button, belt clip pendant transmitter

- Simple, single-button activation
- Belt clip included
- Available as fixed mount with back tamper (EN1235SF)



EN1235SF Single-button, fixed position hold up transmitter ^{UL}

- Easy single-button activation
- Include back tamper for secure fixed position alarm signaling
- LED flashes with all transmissions, ensuring operation at a glance



EN1236D Double-button, three condition belt clip pendant

- Activates three different alarm conditions
- Belt clip included
- Easily mounted for fixed position signaling



EN1238D Double-button, dual condition belt clip pendant

- Activates two different alarm conditions
- Belt clip included
- Easily mounted for fixed position signaling



EN1210 Single input universal transmitter

- For use with almost any standard NO/NC contact or sensor
- Includes case tamper protection
- Available as board only version - EN1210BO-4H



EN1210-60 Single input universal transmitter*

- For use with almost any standard NO/NC contact or sensor
- Includes case tamper protection
- Available as board only version - EN1210BO-4H
- 60 minute check in



EN1210-240 Single input universal transmitter

- For use with almost any standard NO/NC contact or sensor
- Includes case tamper protection
- Available as board only version - EN1210BO-4H
- 240 minute check in



EN1210EOL Single input universal transmitter, EOL protection

- End of line resistor supervision (EOL resistor required)
- For use with almost any standard NO/NC contact or sensor
- Includes case tamper protection



EN1212 Dual input universal transmitter

- Supports dual inputs
- For use with any standard NO/NC contact or sensor
- Includes case tamper protection



EN1212-60 Dual input universal transmitter*

- Supports dual inputs
- For use with any standard NO/NC contact or sensor
- Includes case tamper protection
- 60 minute check in



EN1215EOL Universal transmitter with wall tamper [®]

- End of line resistor supervision (EOL resistor required)
- Screw closure housing and wall tamper switch provide additional security
- For use with any standard NO/NC contact or sensor
- Includes both case and back tamper protection



EN1216 Dual input universal transmitter with wall tamper

- Supports dual inputs
- Screw closure housing and wall tamper switch provide additional security
- For use with any standard NO/NC contact or sensor
- Includes both case and back tamper protection



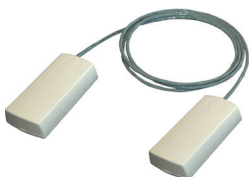
EN1252 Long range, dual input universal transmitter

- Provides five times the output power of other Inovonics universal transmitters
- Provides complete Inovonics EchoStream functionality to your product
- Operates using the dedicated, secure and fully-supervised Inovonics commercial mesh network to ensure critical messages are delivered
- Housing tamper helps ensure transmitter security



EN1721 Integrated temperature/humidity transmitter - Temperature monitoring use only

- Transmits temperature and humidity periodically and upon significant change
- Measurement range: -40° to 140°F and 0 to 90% relative humidity
- Typical accuracy of 0.5°F and 2.0% relative humidity



EN1722 Temperature/humidity transmitter - Temperature monitoring use only

- Transmits temperature/humidity periodically and on significant change
- Measurement range: -40° to 140°F and 0 to 100% relative humidity
- Typical accuracy of 0.5°F and 2.0% relative humidity
- The EN1722 requires use of the ACC710



EN1723 Dual input temperature transmitter - Temperature monitoring use only

- Transmits temperature measurement periodically and on significant change
- Transmission intervals from 10 seconds to 30 minutes
- Sensor measurement range: Internal: -13° to 140°F, External: -22° to 212°F



EN1751 Water detector

- Alarms upon detection of 1/4" non distilled water
- Tamper if probe wire is cut or disconnected
- Fully supervised, with a 60-minute check-in interval



EN1752 Temperature detector

- 80°F high threshold for server rooms monitoring; 40°F low threshold for pre-freeze warning
- Programmable thresholds with the ACC17XX programming cable and transmitter programmer app (supports Windows 10 and higher)
- Compatible with Honeywell T280R probe for external monitoring applications



EN1210W Door/window transmitter with reed switch

- Contains wired input and magnetic reed switch input
- Built-in magnetic reed switch that supports up to a 0.6" gap
- For use with any standard NO/NC contact or sensor
- Includes case tamper protection



EN1210W-60 Door/window transmitter with reed switch*

- Contains wired input and magnetic reed switch input
- Built-in magnetic reed switch that supports up to a 0.6" gap
- For use with any standard NO/NC contact or sensor
- Includes case tamper protection
- 60 minute check in



EN1215WEOL Door/window transmitter with wall tamper, reed switch and EOL protection

- End of line resistor supervision (EOL resistor required)
- Built-in magnetic reed switch that supports up to a 0.6" gap
- Screw closure housing and wall tamper switch provide additional security
- For use with any standard NO/NC contact or sensor
- Includes both case and back tamper protection



EN1244 Smoke detector transmitter

- Local test and silence alarm functions
- Low battery detection
- Maintenance warning
- Tamper switch for prevention against sensor removal



EN1245 Wireless CO detector

- Local test and silence alarm functions
- Low battery detection
- Maintenance warning
- Tamper switch for prevention against sensor removal
- Ten year CO sensor life



EN1247 Glassbreak detector transmitter

- Interlogix's ShatterPro II pattern recognition technology provides extended range (25 ft. radius, 360° coverage)



EN1249 Billtrap transmitter

- Two alarm transmission modes, two and ten second delay, to reduce false alarms
- Wireless design provides ease of installation and drawer removal
- Back and case tamper
- LED indication confirms when bill has been inserted into the billtrap



EN1501 Pulse meter transmitter - *Submetering use only*

- TapWatch submetering system compatible
- Compatible with virtually any meter with a pulsed output
- Case tamper protection



EN1501-EXT Pulse meter transmitter board for integration - *Submetering use only*

- TapWatch submetering system compatible
- Compatible with virtually any meter with a pulsed output



EN1501-XL Pulse meter transmitter with extended life battery - *Submetering use only*

- TapWatch submetering system compatible
- Compatible with virtually any meter with a pulsed output
- Includes a non-replaceable, long-life battery, with a life expectancy of 20 years



EN1550EP Encoder Pulse Transmitter - *Submetering use only*

- Compatible with Neptune E-CODER®, ProRead™, ProCoder™ register
- TapWatch submetering system compatible
- Includes case tamper protection



EN1702 Current/voltage data transmitter

- Supports user selectable dual channel input on a single device
- Transmits analog measurements periodically and upon significant change
- Jumper selectable units of measurement: 0-5V, 0-10V or 4-20mA
- 16 bit measurement resolution, 1.0% measurement accuracy



EN1941 Dual input one-way RF module

- Powered by input device - low current draw
- Easy to integrate to any binary switch device
- Small form factor



EN1941-60 One-way, serial data RF module*

- 60 minute check-in
- Excludes 8-pin header



EN1941-60XHR One-way, serial data RF module without header*

- 60 minute check-in
- Excludes 8-pin header



EN1941XS One-way, serial data RF module*

- Powered by input device - low current draw
- Easy to integrate to any serial output device
- 50 byte serial data payload



EN3942XS Serial data two-way RF module

- Powered by input device - low current draw
- Easy to integrate to any serial output device
- 50 byte serial data payload
- One-way version available (EN1941XS)

*UL 2560 fundamental device with UL unlisted component certification. Partners must achieve Emergency Call System certification from a Nationally Recognized Testing Laboratory to claim compliance with UL 2560.



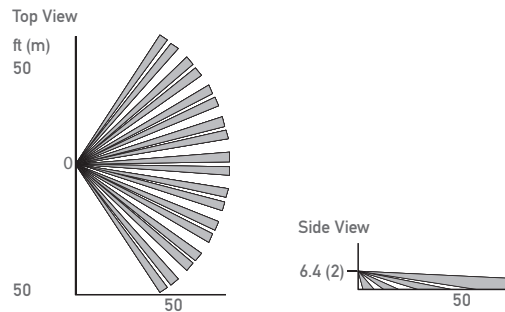
EN1241-60 Activity sensor for senior living*

- Low current detector highly sensitive to moving heat infrared radiation for increased immunity to interface, and false alarms
- Adjustable sensitivity
- Case tamper and back tamper switches
- 60 minute check in



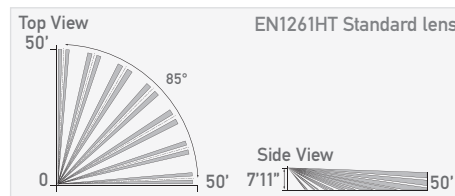
EN1260 Wall mount motion detector

- Intelligent sleep timer extends battery life in high traffic environments
- Digital signal processing recognizes human signatures to reduce false alarms
- Highly sensitive to moving infrared radiation
- Increased immunity to radio frequency interference, vibration, static, lightning, ambient temperature changes, and other causes of false alarms
- Detection range of 50 feet



EN1261HT High traffic four element motion detector [®]UL

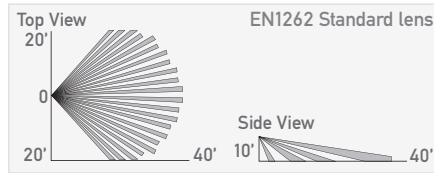
- Increased immunity to radio frequency interference, vibration, static, lightning, ambient temperature changes, or other causes of false activation
- Case tamper and back tamper switches
- Pet immunity (up to 33lbs/1ft)
- Four year battery life in high traffic applications (200 activations a day)
- Selectable sleep modes
- Adjustable sensitivity





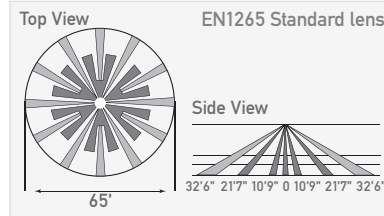
EN1262 Motion detector with pet immunity

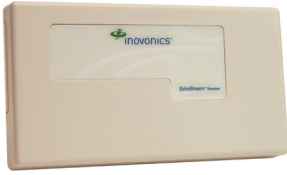
- For residential and low traffic (less than 100 activations a day) commercial applications
- Features Pet Friendly® pet immunity for animals up to 30 lbs
- Uses advanced signal processing to provide false activation immunity
- 90 second sleep time



EN1265 360° Ceiling mount motion detector

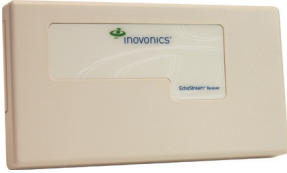
- Wireless four element passive infrared intrusion detector for use in ceiling mount applications
- Provides wide coverage patterns even at low mounting heights
- Increased immunity to radio frequency interference, vibration, static, lightning, ambient temperature changes, or other causes of false activation
- Intelligent sleep timer extends battery life in high traffic environments





EN4000 Universal serial receiver

- Wireless gateway between EchoStream one-way transmitters (security, submetering, temperature, or analog) and a head end application using an RS-232 serial interface
- Serial receiver transmits EchoStream formatted messages to the head end application
- Supervised connection between the receiver and application
- Serial integration enables hundreds to thousands of wireless devices



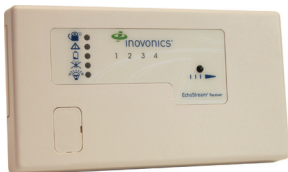
EN4200 Security only serial receiver

- Wireless gateway between EchoStream one-way security transmitters and an head end application using an RS-232 serial interface
- Serial receiver transmits EchoStream formatted messages to the head end application
- Supervised connection between the receiver and application
- Serial integration enables hundreds to thousands of wireless devices



EN6040-T Network coordinator with transformer*

- Supports EchoStream end devices
- RS-232 serial interface with VAR's head end application



EN4204R Four zone add-on receiver with relay outputs

- Add up to four high performance EchoStream wireless transmitters to any installation
- LED allows the user to view the current status of all four transmitters
- Five form C relays for connecting to any panel: four alarm, one fault
- Outputs can be configured in follower, latching, momentary, or toggle modes independently
- Case tamper protection, jam detection, and internal antennas for a secure wireless implementation
- Wireless programming routine built into the receiver



EN4216MR 16 zone multi-condition receiver, relay outputs

- Add up to 16 high performance wireless transmitters and/or repeaters to any installation
- Two line text display shows condition of each transmitter, provides log of past events, and view signal strength
- Six form C relays for connecting to any panel: five alarm, one fault
- Supports single condition and multiple condition transmitters
- Momentary output duration programmable from 0.5 to 99.5 seconds
- Case tamper protection, jam detection, and internal antennas for a secure wireless implementation
- Wireless programming routine built into the receiver



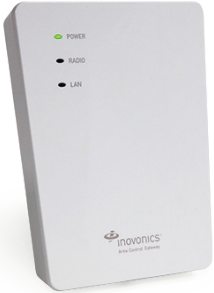
EN4232MR 32 zone multi-condition receiver, relay outputs

- Add up to 32 wireless high performance EchoStream wireless transmitters and/or repeaters to any installation
- 12 form C relays for connecting to any panel: 11 alarm, one fault
- Supports single condition and multiple condition transmitters
- Password protected access levels for end user, authorized user, and authorized installer
- Jam detection monitors all RF channels for interference.
- Supports a normally open (N/O) or normally closed (N/C) configuration.
- Reset terminal to allow for externalized receiver resets.
- Tamper terminal to allow for externalized tampers.



EN4080 IP gateway - *Message queuing telemetry transport (MQTT) license required*

- Combines EN4000 receiver and third party IP gateway functionality into a single product
- Optional Power over Ethernet (PoE) feature
- Supports over-the-air updates
- Compatible with all Inovonics EchoStream one-way transmitters



EN6080 Area control gateway*

- IP integration of Inovonics wireless devices into commercial security systems
- Uses open source protocol to enable integration with non-Inovonics security solutions
- Includes a web-browser and embedded device configuration software
- Supports up to 3,000 end devices (with license)



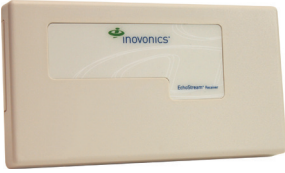
EN7580 TapWatch gateway - *Submetering use only*

- Combines the receiver and data logger functionality into a single gateway
- Supports over-the-air updates
- Full compatibility with previously installed EchoStream systems



EN7581 TapWatch gateway lite - *Submetering use only*

- Ideal for smaller residential or light commercial properties
- Combines the receiver and data logger functionality into a single gateway
- Supports over-the-air updates
- Full compatibility with previously installed EchoStream systems



EN4200 Serial receiver/interface for Bosch panels [®]

- Wireless integration with Bosch D7212G, D7412G and D9412G panels
- Requires ENKIT-01 (GV3) or ENKIT-SDI2 (GV4) - available through Bosh
- The ENKIT-01 (GV3) and ENKIT-SDI2 (GV4) include both EN4200 and interface module
- May require multiple interface modules
- The Bosch D7212G interface has 32 wireless points
- The Bosch D7412G interface has 67 wireless points
- The Bosch D9412G has 238 wireless points
- Compatible with control panels including all versions of the D9412GV4, D7412GV4 and D7212GV4, as well as the B3512, B4512, B5512, B6512, B8512G and B9512G

EN4200 Serial receiver/interface for Pacom field controllers [®]

- Wireless integration with Pacom 8002 controller and alarm management
- RS232 communication with Pacom field controllers
- Remote transmitter arm and disarm
- The Pacom 8002 controller has 256 wireless points

EN4200 Serial receiver/interface for Sonitrol panels [®]

- Wireless integration with Sonitrol iBase, FlexiBase, and FlexIP panels
- Based on Sonitrol IP panel programming, the panel will send alarms to a central station
- The iBase interface has 64 wireless points

EN4200 Serial receiver/interface for Interlogix panels [®]

- Wireless integration with Interlogix Verex Monitor XL panel
- Supports up to 32 zones per receiver
- The Verex Monitor XL interface has 32 wireless points



EN7286NX Serial receiver/interface for Interlogix

- Wireless integration with the Interlogix NetworX NX-8, NX-8E, NX-6 and NX-4 panels
- Remote transmitter arm and disarm
- The NetworX NX-8 interface has 48 wireless points
- The NetworX NX-8E interface has 192 wireless points
- The NetworX NX-6 interface has 16 wireless points

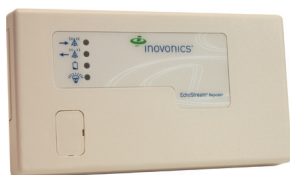


EN7290 Serial receiver/interface for Honeywell panels

- Wireless integration with Honeywell VISTA-128 and VISTA-250 panels
- Honeywell panels support multiple condition devices including the EN1212, EN1216, EN1224, EN1224-ON, EN1236D and EN1238D
- The Honeywell VISTA-128 interface has 127 wireless points
- The Honeywell VISTA-250 interface has 249 wireless points

EN7290 Serial receiver/interface for Johnson Controls panels

- Wireless integration with Johnson Controls TYCMSM128 and TYCMSM250FB panels
- Johnson Controls panels support multiple condition devices including the EN1212, EN1216, EN1224, EN1224-ON, EN1236D and EN1238D
- The Johnson Controls TYCMSM128 interface has 127 wireless points
- The Johnson Controls TYCMSM250FB interface has 249 wireless points



EN5040 High power repeater

- Includes backup battery
- No wires or programming required
- Self configuring
- Case and wall tamper protection

EN5040-T High power repeater with transformer

- Includes 120 VAC power transformer
- Includes backup battery
- No wires or programming needed
- Self configuring
- Case tamper protection

EN5040-20T High power repeater with transformer*

- Supervises for low battery, loss of line power, case tamper, back tamper and jam protection
- Incorporates sophisticated signal management
- Includes backup battery
- Self configuring
- Case tamper protection
- Sends check in message every 20 minutes



EN1210SK Universal survey transmitter

The Inovonics EN1210SK survey transmitter is used with the EN7016 wireless survey kit to help determine the optimal location for transmitters and repeaters. Switch turns transmitter on/off to generate a "heartbeat" RF signal.



EN1223SK Pendant survey transmitter

The Inovonics EN1223SK survey pendant is used with the EN7016 wireless survey kit to help determine the optimal location for transmitters. Button turns transmitter on/off to generate a "heartbeat" RF signal.



EN7016 Wireless survey kit

The EN7016 wireless survey kit is available for purchase or 30 day loan — you pay only the cost of shipping. Use the Inovonics EN7016 to determine optimal location for EchoStream transmitters and repeaters or to demonstrate the range of 900MHz EchoStream devices to potential customers.

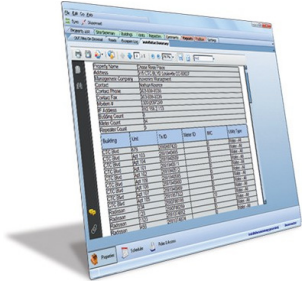
- Survey any facility quickly and easily
- Completely portable
- Battery operates the system for up to eight hours
- Includes one EN1223SK survey pendant and one EN1210SK survey universal transmitter
- Requires four AA batteries, not included



EN7017 Survey kit and app

The EN7017 survey kit and app provides security integrators with a wireless blueprint in advance of installing devices, allowing the quick preparation of accurate quotes.

- Automatic notification of both signal repeater signal strength
- Intuitive display
- Protective and professional storage
- Mobile flexibility



TapWatch 3 TapWatch 3 Software - *Submetering use only*

- TapWatch 3 software communicates with the RDL8500 data logger and allows for configuring a submetered site
- Works in conjunction with IP enabled sites
- Is able to communicate with RDL8500s using IP enabled connection via TapWatch proxy connection, a modem, or the RDL8500's LAN (RJ45) connection
- Configure site information, transmitters and repeaters
- View RF signal strength from transmitters
- Monitor RF messages received in real time
- Automatically creates meter reads in a standard text file format

Transmitters

Pendant Transmitters

Part Number	Description
EN1221S-60N	Waterproof pendant with lanyard - <i>Senior living use only</i>
EN1221S-60NBU	Waterproof pendant with lanyard - bulk 50 - <i>Senior living use only</i>
EN1221S-60W	Waterproof pendant with wristband - <i>Senior living use only</i>
EN1221S-60WB	Waterproof pendant with wristband - bulk 10 - <i>Senior living use only</i>
EN1221S-60WLB	Waterproof pendant with long wristband- bulk10 - <i>Senior living use only</i>
EN1223D	Double-button, water-resistant pendant transmitter
EN1223S	Single-button, water-resistant pendant transmitter
EN1223S-BU	Single-button, water-resistant pendant transmitter - bulk 50
EN1223S-60	Single-button, water-resistant pendant transmitter, 60 minute check in
EN1223S-60BU	Single-button, water-resistant pendant transmitter, 60 minute check in - bulk 50
EN1224	Four-button, multi-condition belt clip pendant
EN1224-ON	Four-button, multi-condition belt clip pendant with on/off
EN1233D	Double-button, pendant transmitter
EN1233S	Single-button, pendant transmitter
EN1235D	Double-button, belt clip pendant transmitter
EN1235DF	Double-button, fixed position hold up transmitter
EN1235S	Single-button, belt clip pendant transmitter
EN1235SF	Single-button, fixed position hold up transmitter
EN1236D	Double-button, three condition belt clip pendant
EN1238D	Double-button, dual condition belt clip pendant

Universal Transmitters

Part Number	Description
EN1210	Single input universal transmitter
EN1210-BU	Single input universal transmitter - bulk 50
EN1210-60	Single input universal transmitter, 60 minute check in
EN1210-240	Single input universal transmitter, 4 hour check in
EN1210-240-BU	Single input universal transmitter, 4 hour check in - bulk 50
EN1210EOL	Single input universal transmitter, EOL protection
EN1212	Dual input universal transmitter
EN1212-60	Dual input universal transmitter, 60 minute check in
EN1215EOL	Universal transmitter with wall tamper
EN1216	Dual input universal transmitter with wall tamper
EN1252	Long range, dual input universal transmitter

Commercial Monitoring Transmitters

Part Number	Description
EN1721	Integrated temperature/humidity transmitter
EN1722	Temperature/humidity transmitter
EN1723	Dual input temperature transmitter
EN1723-BU	Dual input temperature transmitter - bulk 50
EN1751	Water detector
EN1752	Temperature detector

Specialized Transmitters

Part Number	Description
EN1210W	Door/window transmitter with reed switch
EN1210W-60	Door/window transmitter with reed switch, 60 minute check in
EN1215WEOL	Door/window transmitter with wall tamper
EN1244	Smoke detector transmitter
EN1245	Wireless CO detector
EN1247	Glassbreak detector transmitter
EN1249	Billtrap transmitter
EN1501	Pulse meter transmitter
EN1501-EXT	Pulse meter transmitter board for integration
EN1501-XL	Pulse meter transmitter with extended life battery
EN1550EP	Encoder Pulse Transmitter

Specialized Transmitters (Continued)

Part Number	Description
EN1702	Current/voltage data transmitter
EN1941	RF module
EN1941-BU	Dual input one-way RF module - bulk 50
EN1941-60-BU	Dual input one-way RF module, 60 minute check in - bulk 50
EN1941-60XHR	Dual input one-way RF module without header
EN1941-60XHR-BU	Dual input one-way RF module without header - bulk 50
EN1941XS	One-way, serial data RF module
EN1941XS-BU	One-way, serial data RF module - bulk 50
EN3942XS	Serial data two-way RF module

Motion Detectors

Part Number	Description
EN1241-60	Activity sensor, 60 minute check in
EN1260	Wall mount motion detector
EN1261HT	High traffic four element motion detector
EN1262	Motion detector with pet immunity
EN1265	360° Ceiling mount motion detector

Receivers

Serial Receivers

Part Number	Description
EN4000	Universal serial receiver
EN4200	Security only serial receiver
EN6040-T	Network coordinator with transformer

Add-On Receivers

Part Number	Description
EN4204R	Four zone add-on receiver with relay outputs
N4216MR	16 zone multi-condition receiver with relay outputs
EN4232MR	32 zone multi-condition receiver with relay outputs

IP Receivers

Part Number	Description
EN4080	IP gateway
EN6080	Area control gateway
EN7580	TapWatch gateway
EN7581	TapWatch gateway lite

Panel Partner Receivers

Part Number	Description
EN4200	Serial receiver/interface kit for Bosch panel (D7212G, D7412G, D9412G, B3512, B4512, B5512, B6512, B8512G and B9512G)
EN4200	Serial receiver/interface for Pacom field controllers (8002 controller)
EN4200	Serial receiver/interface for Sonitrol panels (iBase, FlexiBase, FlexIP)
EN4200	Serial receiver/interface for Interlogix panels (Verex Monitor XL)
EN7286NX	Serial receiver/interface for Interlogix (NetworkX NX-8, NX-8E, NX-6, NX-4)
EN7290	Serial receiver/interface for Honeywell panel (VISTA 128/250)
EN7290	Serial receiver/interface for Johnson Controls panel (TYCMSM128, TYC-MSM250FB)

Repeaters

Repeaters

Part Number	Description
EN5040	High power repeater
EN5040-T	High power repeater with transformer
EN5040-20T	High power repeater with transformer, 20 minute check in

Other Infrastructure

System Tools

Part Number	Description
EN1210SK	Universal survey transmitter
EN1223SK	Pendant survey transmitter
EN7016	Wireless survey kit
EN7017	Survey kit and app

Software

Part Number	Description
TapWatch	TapWatch 3 software

Accessory Index

Part Number	Description
ACC1223D-25	E*1223D GRAY HOUSING 25PK
ACC1223S-25	E*1223S WHITE HOUSING 25PK
ACC501	Mounting Plate
ACC520-25	EN1235S/SF-1 BUTTON COVER-25PK
ACC521-25	EN1235D/DF/36D/38D-2 BUTTON COVER-25PK
ACC522-25	EN1235S/D/36D/38D-BASE HSG-25PK
ACC523-25	EN1235SF/DF-BASE HOUSING-25PK
ACC524-25	EN1224/ON-HOUSING KIT-25PK
ACC525-25	EN1233/35S-1 BTN-KPD-W/LT PIPE-25PK
ACC526-25	EN1233/35D-2 BTN-KPD-W/LT PIPE-25PK
ACC530-25	MAGNET-DOOR/WINDOW-WHITE-25PK
ACC531-5000	TAMPER SPRING-5000PK
ACC532-100	TERMINAL BLOCK-2 INPUT-100PK
ACC551	Big Green Battery Recycling Box
ACC603M	Metal Necklace
ACC603P	Plastic Necklace
ACC605-BK10	Pendant Belt Clip Replacement, 10Pk
ACC610	14VAC/20VA Transformer
ACC612	AC/DC Power Supply - RDL8500
ACC620	Programming Cable
ACC623A	Accessory Pack for E*1223 Pendant
ACC623B	Accessory Pack Black for E*1223 Pendant
ACC623L	WRIST STRAP-LARGE
ACC623L-50	WRIST STRAP-LARGE-50 PACK
ACC623S	WRIST STRAP-SMALL
ACC623S-50	WRIST STRAP-SMALL - 50 Pack
ACC624BG-50	E*1223D GRAY BELT-CLIP 50PK
ACC624BW-50	E*1223S WHITE BELT-CLIP 50PK
ACC624NG-50	E*1223D GRAY NECK-CLIP 50PK
ACC624NW-50	E*1223S WHITE NECK-CLIP 50PK
ACC625-50	E*1223S RESET BUTTON & SEAL 50PK
ACC626-50	E*1223D RESET BUTTON/SEAL 50PK
ACC627-200	E*1223S HOUSING SCREWS SILVER 200PK
ACC628-200	E*1223D HOUSING SCREWS BLACK 200PK
ACC631	Continuous Alarm Trigger Module
ACC643	Serial/Power Cable
ACC647	Serial Cable for TW
ACC650	Repeater Outdoor Housing Encloser
ACC653	RF Gateway Serial and Power Cable
ACC664	Cable-EN7280-Sec Interfce
ACC665	Wall/Ceiling Mount Bracket
ACC667	Filter-White Light-E*1261
ACC668	Lens-Long Range-E*1261
ACC669	High Ceiling Lens for EN1265 PIR
ACC672CT	Curtain Lens-EN1260 PIR
ACC672LR	Long Range Lens-EN1260 PIR
ACC672PA	Pet Alley Lens-EN1260 PIR
ACC680-BU	Alarm Clearance Cards for EN1221S-60-Bulk 10
ACC681-BU	Neck Lanyards for EN1221S-60N - Bulk 10
ACC682-BU	Wristbands for EN1221S-60W - Bulk 10
ACC683-BU	Belt Loop Kits for EN1221S-60N - Bulk 10
ACC684-BU	Battery Doors for EN1221S-60 - Bulk 10
ACC710	Temperature/Humidity Probe
ACC8500	RDL8500 TapWatch.com Upgrade USB

Replacement Battery Index

Part Number	Description
BAT601B	Box of four 4.5V Replacement Battery
BAT604	3.0V Lith Batt (Duracell)
BAT604-400	3.0V Replacement Battery-Panasonic
BAT604-50	3.0V Lith D- multiples 50
BAT607	3.0 V Lithium Replacement Battery
BAT608	3.0 Lithium Replacement Battery
BAT609	3.0V Lithium Coin Cell
BAT610	Replacement Battery 3.0V,2.2AH, High Traffic
BAT850	Replacement Battery, EE/EN5040

Inovonics UL Certifications - by Product Number

Part Number	Certifications
EN1215EOL	UL365, UL1023, UL1076, UL1610, cUL
EN1215WEOL	UL365, UL634, UL1023, UL1076, UL1610, cUL, ULC/ORD-C634-86
EN1221S-60N	UL2560
EN1221S-60W	UL2560
EN1223D	UL1023, cUL
EN1223S-60	UL2560
EN1235DF	UL365, UL636, UL1076, UL1610
EN1235SF	UL365, UL636, UL1076, UL1610
EN1242	UL217
EN1244	UL268
EN1245	UL2075, UL2560
EN1249	UL365, UL636, UL1076, UL1610
EN1261HT	UL365, UL369, UL1023, UL1076, UL1610, cUL
EN1941	UL639, UL1076, UL1610, cUL, ULC-S306-03, ULC/ORD-C1076
EN1941XS	UL2560
EN1941-60	UL2560
EN4200	UL365, UL636, UL1023, UL1076, UL1610, cUL
EN4204R	UL365, UL636, UL985, UL1023, UL1076, UL1610, cUL, ULC/ORD-C1023-74
EN4216MR	UL365, UL636, UL1023, UL1076, UL1610, cUL
EN4232MR	UL365, UL636, UL1023, UL1076, UL1610, cUL
EN5040-T	UL2560
EN5040-20T	UL2560
EN6040-T	UL2560
EN6080	UL2560
EN7290	UL365, UL609, UL1023, UL1076, UL1610, ULC/ORD-C1023-74

Inovonics UL Certifications - by UL Number

UL Number	Part Number
UL 217	EN1242
UL 365	EN1215EOL, EN1215WEOL, EN1235DF, EN1235SF, EN1249, EN1261HT, EN4216MR, EN4232MR, EN5040-T, EN7290, EN4200
UL 609	EN7290
UL 634	EN1215WEOL
UL 636	EN1235DF, EN1235SF, EN1249, EN4216MR, EN4232MR, EN5040-T, EN4200
UL 639	EN1261HT, EN1941
UL 1023	EN1215EOL, EN1215WEOL, EN1223D, EN1261HT, EN4216MR, EN4232MR, EN5040-T, EN7290, EN4200
UL 1076	EN1215EOL, EN1215WEOL, EN1235DF, EN1235SF, EN1249, EN1261HT, EN4216MR, EN4232MR, EN5040-T, EN7290, EN4200, EN1941
UL 1610	EN1215EOL, EN1215WEOL, EN1235DF, EN1235SF, EN1249, EN1261HT, EN4216MR, EN4232MR, EN5040-T, EN7290, EN4200, EN1941
UL 2075	EN1245
UL 2560	EN1221S-60N, EN1221S-60W, EN1223S-60, EN1245, EN5040-20T, EN6040-T, EN6080, EN1941XS, EN1941-60
cUL	EN1215EOL, EN1215WEOL, EN1223D, EN1261HT, EN4216MR, EN4232MR, EN5040-T, EN4200, EN1941
ULC / ORD-C634-86	EN1215WEOL
ULC/ ORD-C1023-74	EN1215EOL, EN1215WEOL, EN1223D, EN1261HT, EN4216MR, EN4232MR, EN5040-T, EN7290, EN4200
ULC-S306-03	EN1261HT, EN1941
ULC/ORD-C1076	

UL Standards & Descriptions

Part Number	Certifications
UL 217	Single & Multiple Station Smoke Alarms
UL 365	Police Station Connected Burglar Alarm Units & Systems
UL 634	Connectors & Switches for Use w/Burglar Alarm Systems
UL 636	Holdup Alarm Units & Systems
UL 639	Intrusion - Detection Units
UL 1023	Household Burglar Alarm Units
UL 1076	Proprietary Burglar Alarm Units & Systems
UL 1610	Central Station Burglar Alarm Units
UL 2075	Gas and Vapor Detectors and Sensors
UL 2560	Emergency Call Systems for Assisted Living and Independent Living Facilities
cUL	Certified for Canada
ULC / ORD-C634-86	Connectors & Switches for Use w/Burglar Alarm Systems for Canada
ULC/ ORD-C1023-74	Household Burglar Alarm Units for Canada
ULC-S306-03	Intrusion - Detection Units for Canada
ULC/ORD-C1076	Proprietary Burglar Alarm Units & Systems for Canada



inovonics[®]

Phone: 303.939.9336

Toll-Free: 800.782.2709

Tech Support: 800-782-2709, option 2

Customer Service: 800-782-2709, option 1

Fax: 303.939.8977

sales@inovonics.com

www.inovonics.com