

IX-DVF-HW

IX Series Video Door station with Hand Wave Call Button and Surface Mount Box

-INSTRUCTIONS-

IX-DVF-HW includes a video door station with a built-in touchless switch, a PS-POE, and an SBX-IDVFRA surface mount box. The IX-DVF-HW operates like a standard IX-DVF with the added ability to place a call to the programmed station without having to touch the call button. The touchless switch utilizes the first contact input on the door station. The contact input will need to be programmed and assigned to the same calling group as the call button. Program the IX-DVF-HW as an IX-DVF. Refer to the IX Series Quick Start Programming Guide for details. This manual will show how to install and program the door station for contact input calling.

Wiring

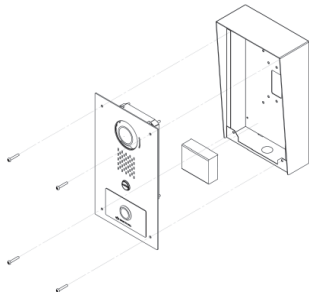
A PoE+ switch is required when using the IX-DVF-HW. Connect a network cable from the PoE+ switch to LAN 1 of the IX Series door station. LAN 2 connects to the included PS-POE. Connect the power output of the PS-POE to the red (+VDC) and black (Gnd) wires of the touchless switch. The green (N/O) and yellow (Common) wires of the touchless switch will already be connected to the brown and blue wires of the CN2 connector. The white (N/C) wire is not used.

Package Contents

- Qty 1 Video door station with touchless sensor
- Qty 1 PS-POE
- Qty 1 SBX-IDVFRA surface mount box
- Qty 4 speed nuts for panel mounting
- Qty 4 screws for panel mounting
- Qty 1 One foot patch cable

Installation

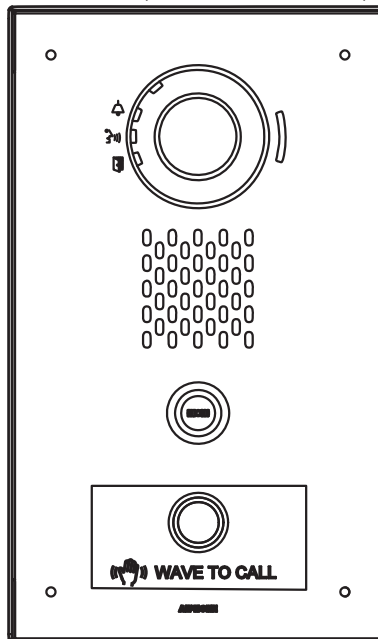
1. Secure the SBX-IDVFRA to wall
2. Connect the supplied patch cable, power wires, and a ground wire to PS-POE and place unit inside the SBX-IDVFRA at the bottom so that it does not interfere with securing the station
3. Attach speed nuts to tabs on the SBX-IDVFRA, then connect ground wire from PS-POE to one of the four screws used to secure IX-DVF-HW to the SBX-IDVFRA
4. Plug in CN2 connector and connect network cable to the station
5. Secure station to SBX-IDVFRA



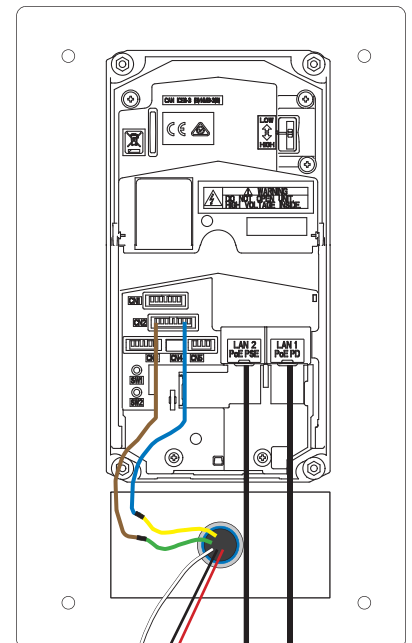
Specifications

Dimensions:
11-1¹/₁₆" H x 7" W x 3-5⁵/₁₆" (top); 2-5⁵/₁₆" (bottom) D

IX-DVF-HW (surface box not shown)



Inside Back View



N.C. (not used)

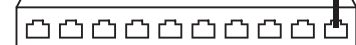
Red = +VDC

Black = Gnd

Patch cable supplied
Cat-5e / Cat-6



PoE+ Switch

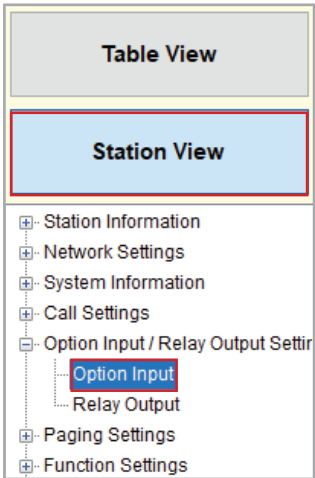


If a PoE passthrough is not available, connect the PS-POE directly to the PoE switch

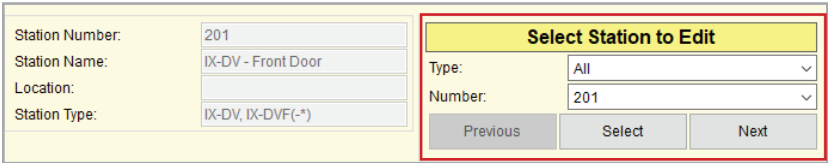
Programming

Enabling Door Station Option Input

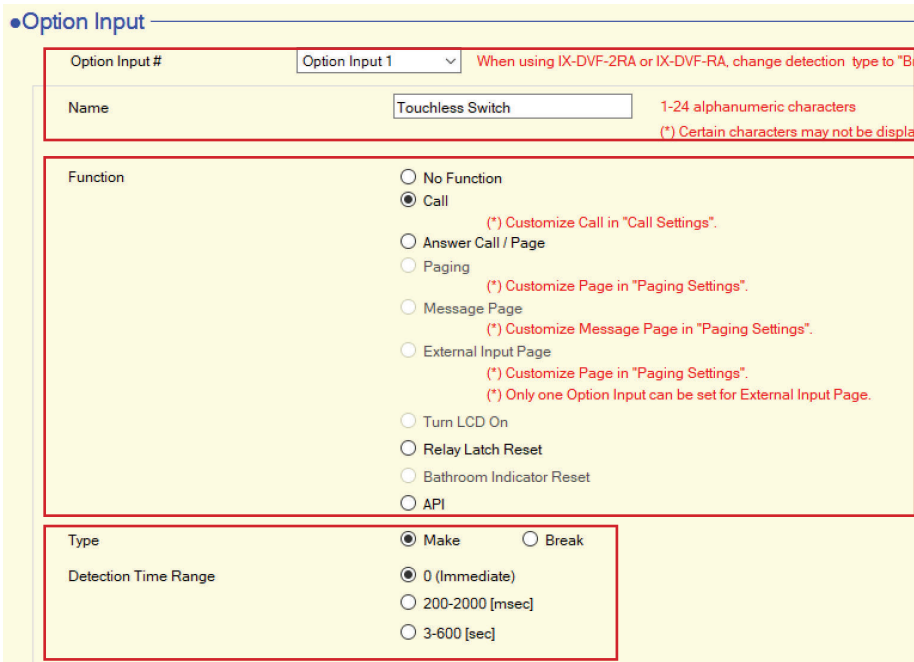
The first step is to enable contact input 1 on the IX-DVF-HW, as this is connected to the touchless switch. Open IX Support Tool and select the system to edit. In the upper left corner of the screen click **Station View** to switch from **Table View** to **Station View**.



1.1 - Option Input
Expand **Option Input / Relay Output Settings** and click **Option Input**.



1.2 - Select a Station
Use the drop-down menu or click **Next** to choose the station number of the door station to be configured. Click **Select**.



1.3 - Option Input / Name
Select **Option Input 1** using the drop-down menu and assign a **Name**.

1.4 - Choose a Function
Select **Call** for this option input.

1.5 - Contact Settings
Select **Make** for the **Type** and **0 (Immediate)** for the **Detection Time Range**.

Click **Update** to save your settings.

Door Station Option Input Call

The next step is to assign a call group to the trigger input. The call group for the trigger input will be the same group assigned to the call button.

- Station Information
- Network Settings
- System Information
- Call Settings
 - Station Information
 - Called Stations (Master Stati
 - Called Stations (Door/Sub St
 - Call Origination**
 - Incoming Call
- Option Input / Relay Output Settir
- Paging Settings
- Function Settings
- Transfer Settings
- Station Settings
- Maintenance

2.1 - Call Origination
Expand **Call Settings** and click **Call Origination**.

Station Number:	201	<div style="text-align: center;">Select Station to Edit</div> Type: <input type="text" value="All"/> Number: <input type="text" value="201"/> <input type="button" value="Previous"/> <input type="button" value="Select"/> <input type="button" value="Next"/>
Station Name:	IX-DV - Front Door	
Location:		
Station Type:	IX-DV, IX-DVF(-*)	

2.2 - Select a Station
Use the drop-down menu to choose the station number of the door station to be configured and click **Select**.

Call Origination

Call Button / Option Input #

Call Method

Standard Destination

Change Destination by Time Delay

Change Destination by Schedule

Ringback Tone

Call Timeout sec

Ringback Tone Count [time(s)]

Call Destination	Call Destination 01-99	Priority
	<input type="button" value="Open"/>	<input type="text" value=""/>
Standard Mode Settings	Call Destination <input type="text" value="01"/>	Priority <input type="text" value="Normal"/>

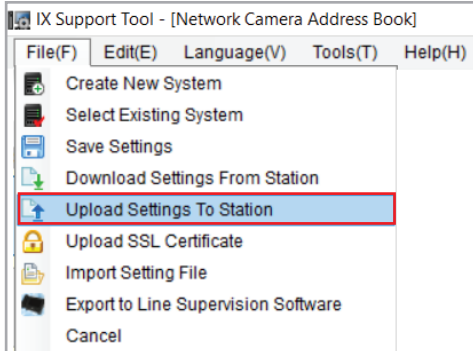
2.3 - Select an Input
Use the drop-down menu and select **Option Input 1**.

2.4 - Select a Destination
Click **Open** under **Call Destination** and select group **01**. Use the **Priority** drop-down menu to select the calling priority.

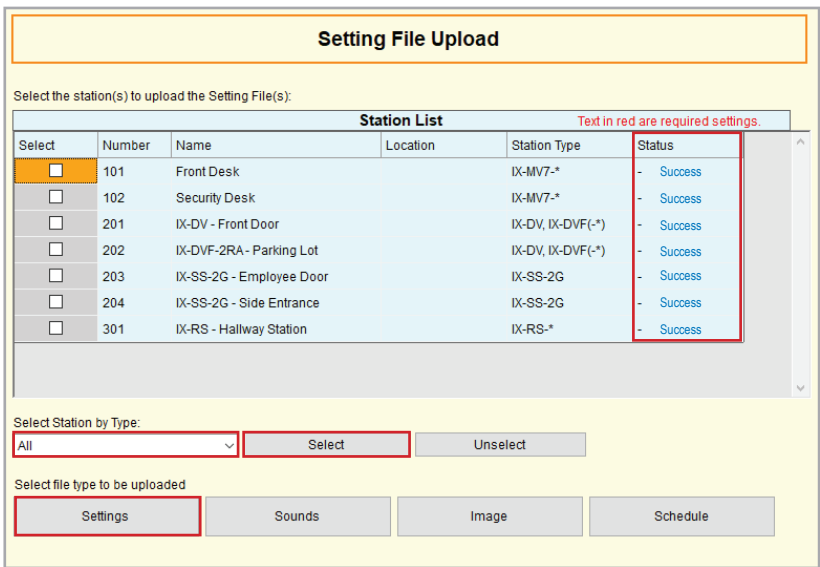
Click **Update** to save your settings.

Uploading Settings to Stations

The final step is to upload all updated settings from Support Tool to the door station.



3.1 - Upload Settings to Station
From the menu bar select **File** then **Upload Settings To Station**



3.2 - Select Stations
Click **Select** to check all stations in the system or select just the door station that was changed.

3.3 - Upload Settings
Click **Settings** to begin the upload process.

3.4 - Confirm Status
Using the **Status** column, confirm that each station has successfully been updated with the new setting file.