



TALKAPHONE

EMERGENCY PHONE MOUNTS




ETP-MTE ECO TOWER™

THE ECO TOWER™, MODEL ETP-MTE, COMBINES ECONOMY AND ECOLOGY INTO ONE STYLISH PRODUCT. THE LIGHTWEIGHT ALUMINUM CONSTRUCTION REDUCES ITS ECOLOGICAL FOOTPRINT AND ALLOWS FOR ONE-PERSON INSTALLATION

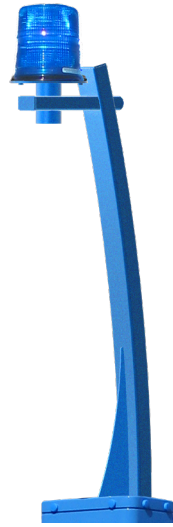
FEATURES

- n Light weight aluminum construction for reduced ecological footprint and one-person installation
- n Durable, multilayer powder coating achieves near-zero waste and VOC (volatile organic compound) emissions
- n Modular construction allows for easy upgrades
- n Optimal internal mounting plates and shelves provide clean mounting solutions for accessories
- n Call Station is illuminated at all times by an LED Panel Light
- n Vandal-resistant and designed to resist extreme weather conditions
- n A variety of signage, graphics and color choices are available
- n Easily mount any ETP-500 Series or VOIP-500 / VOIP-600 Series Call Station into the unit (sold separately)
- n ADA-compliant



	ETP-MTE - ECO TOWER™ Emergency Phone Tower	ETP-MTE-W - Wireless/ Switched Power ECO TOWER™ Emergency Phone Tower	ETP-MTE-WP - Wireless ECO TOWER™ Emergency Phone Tower with Pole
			
Construction:	0.125 in. aluminum	0.125 in. aluminum	0.125 in. aluminum
Dimensions (WxDxH):	10.0 x 6.8 x 113.0 in. (254 x 171 x 2870 mm)	10.0 x 6.8 x 124.0 in. (254 x 171 x 3150 mm)	10.0 x 6.8 x 148.0 in. (254 x 171 x 3759 mm) including pole and Blue Light
Weight:	45 lbs. (20.4 kg)	50 lbs. (22.7 kg)	60 lbs. (27.2 kg)
Coating:	High-gloss, multi-layer, corrosion-inhibitive system with resistance to UV-fade and graffiti protection	High-gloss, multi-layer, corrosion-inhibitive system with resistance to UV-fade and graffiti protection	High-gloss, multi-layer, corrosion-inhibitive system with resistance to UV-fade and graffiti protection
Colors:	Blue and Red are standard. Available in custom colors.	Blue and Red are standard. Available in custom colors.	Blue and Red are standard. Available in custom colors.
Signage:	3.25 in. high reflective white "EMERGENCY" lettering with wide-angle visibility is standard. Available in custom colors, lettering, and graphics.	3.25 in. high reflective white "EMERGENCY" lettering with wide-angle visibility is standard. Available in custom colors, lettering, and graphics.	3.25 in. high reflective white "EMERGENCY" lettering with wide-angle visibility is standard. Available in custom colors, lettering, and graphics.
Lighting:	LED Blue Light: 209 lumens peak, 78 flashes per minute. 50,000 hour lifetime LED Panel Light: Ultra bright LEDs, 50,000 hour lifetime	LED Blue Light: 209 lumens peak, 78 flashes per minute. 50,000 hour lifetime LED Panel Light: Ultra bright LEDs, 50,000 hour lifetime	LED Blue Light: 209 lumens peak, 78 flashes per minute. 50,000 hour lifetime LED Panel Light: Ultra bright LEDs, 50,000 hour lifetime
Power:	9 watts, 12-24VDC, 24/120VAC	9 watts, 12-24VDC, 24/120VAC	9 watts, 12-24VDC, 24/120VAC
Mounting:	Mounts into concrete foundation using included hardware (shipped in advance). Mounting options available for pre-poured parking decks.	Mounts into concrete foundation using included hardware (shipped in advance). Mounting options available for pre-poured parking decks.	Mounts into concrete foundation using included hardware (shipped in advance). Mounting options available for pre-poured parking decks.
Operating Temperature:	-40° F to +131° F (-40° C to +55° C)	-40° F to +131° F (-40° C to +55° C)	-40° F to +131° F (-40° C to +55° C)
Protection Rating:	IP55, NEMA 3R	IP55, NEMA 3R	IP55, NEMA 3R
Limited Warranty:	2-year limited warranty	2-year limited warranty	2-year limited warranty
Approvals:	ETL Recognized Component -- Conforms to UL Standards 60950-1 and 60950-22. Certified to CSA Standard C22.2 Nos. 60950-1 and 60950-22.		

ETP-MTE-ARM - ECO TOWER™
Camera Arm



ETP-MTE-72 - ECO TOWER™
Emergency Phone Tower

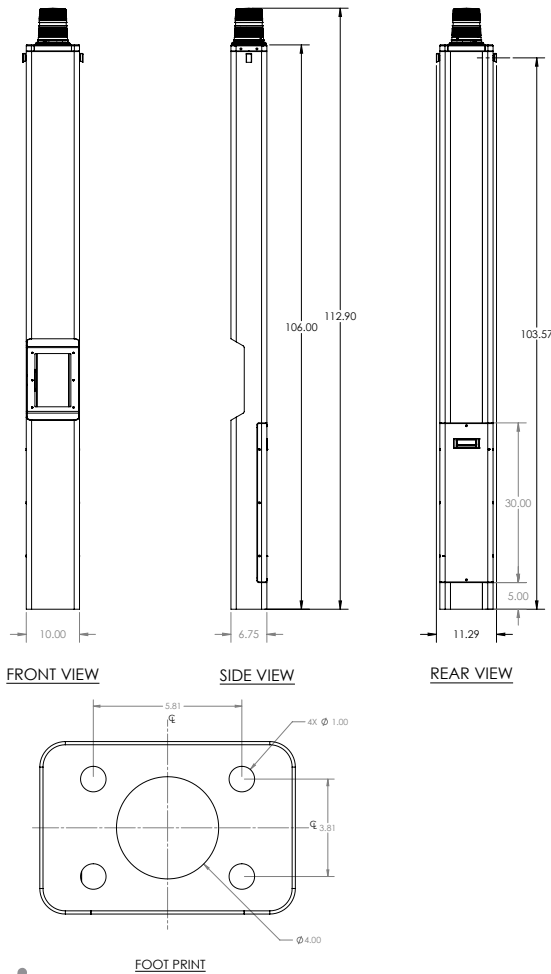


Construction:	0.125 in. aluminum	0.125 in. aluminum
Dimensions (WxDxH):	10.0 x 13.5 x 43.4 in. (254 x 344 x 1101 mm) not including LED Blue Light	10.0 x 6.8 x 72.0 in. (254 x 171 x 1829 mm)
Weight:	18 lbs. (8.2 kg) - Arm	30 lbs. (13.6 kg)
Coating:	High-gloss, multi-layer, corrosion-inhibitive system with resistance to UV-fade and graffiti protection	High-gloss, multi-layer, - corrosion-inhibitive system with resistance to UV-fade and graffiti protection
Colors:	Blue and Red are standard. Available in custom colors.	Blue and Red are standard. Available in custom colors.
Signage:	N/A	3.25 in. high reflective white "EMERGENCY" lettering with wide-angle visibility is standard. Available in custom colors, lettering, and graphics.
Lighting:	N/A	LED Blue Light: 209 lumens peak, 78 flashes per minute. 50,000 hour lifetime LED Panel Light: Ultra bright LEDs, 50,000 hour lifetime
Power:	N/A	9 watts, 12-24VDC, 24/120VAC
Mounting:	Camera mount has a 1.5" NPT adapter to mount a dome camera. Camera mount can be installed on any basic ECO TOWER emergency phone tower.	Mounts into concrete foundation using included hardware (shipped in advance). Mounting options available for pre-poured parking decks.
Operating Temperature:	-40° F to +131° F (-40° C to +55° C)	-40° F to +131° F (-40° C to +55° C)
Protection Rating:	IP55, NEMA 3R	IP55, NEMA 3R
Limited Warranty:	2-year limited warranty	2-year limited warranty
Approvals:	ETL Recognized Component -- Conforms to UL Standards 60950-1 and 60950-22. Certified to CSA Standard C22.2 Nos. 60950-1 and 60950-22.	



DIMENSIONAL DRAWING

All dimensions are in inches and are provided for reference only.



TALKAPHONE

THE LEADERS IN SECURITY AND LIFE SAFETY COMMUNICATIONS

7530 North Natchez Avenue
Niles, Illinois 60714

Tel: 773-539-1100
Email: info@talkaphone.com
Web: www.talkaphone.com

Terms of Use and Limited Warranty

This Product includes intellectual property and proprietary rights owned by Talk-A-Phone, LLC and/or its licensors. Your use of this Product confirms your agreement that Talk-A-Phone, LLC and/or its licensors retain all right, title and interest in and to all such property; that your rights are to access and use the Product for your internal business use only; that all Product elements will be maintained as confidential; and that the Product may not be rented, leased or lent to third parties, reverse engineered, decompiled or disassembled, or otherwise used for any purpose other than as an access device for your premises.

Talk-A-Phone, LLC warrants Talk-A-Phone Emergency Phone, Call Station, and Wide-Area Emergency Broadcast System equipment against any defects in material and workmanship, under normal use, for a period of twenty-four (24) months from date of installation, provided that Talk-A-Phone receives a completed "Installation Certification" certifying the date on which the system has been installed. An "Installation Certification" card is enclosed with every unit. In the event that no "Installation Certification" is received by Talk-A-Phone, the twenty-four (24) months will commence on the date of shipment by Talk-A-Phone. Warranty period for the metal elements of models in the GP Series Pedestals, MT Series Towers, MTE Series Towers, MT/R Series Towers, PM Series Pedestals, SM Series Surface Mounts, Via Series Mounts, and WM Series Wall Mounts is five (5) years, under the same terms and conditions. Warranty period for Area of Rescue Products is sixty (60) months, under the same terms and conditions. Warranty period for Intercommunication Products is twelve (12) months, under the same terms and conditions. If the Product is found by Talk-A-Phone to be defective within the warranty period, Talk-A-Phone's only obligation, and your exclusive remedy, is for the repair or replacement of any defective parts, provided that the Product is returned to us at 7530 N. Natchez Ave., Niles, IL 60714. Talk-A-Phone shall have no obligation to furnish or pay for the labor of any third parties or bear the expense of shipping defective Products for repair. In no event shall Talk-A-Phone or its licensors or suppliers be liable for any form of exemplary or punitive damages, or any special, indirect or consequential damages. TALK-A-PHONE EXPRESSLY DISCLAIMS ALL OTHER WARRANTIES, WHETHER EXPRESS, IMPLIED OR STATUTORY, INCLUDING BUT NOT LIMITED TO THE IMPLIED WARRANTIES OF MERCHANTABILITY OR FITNESS FOR A PARTICULAR PURPOSE. In no event shall Talk-A-Phone or its licensors or suppliers be liable for any form of exemplary or punitive damages, or any special, indirect or consequential damages. Your use of this Product constitutes your agreement to all of the foregoing terms.

THIS WARRANTY GIVES YOU SPECIFIC LEGAL RIGHTS AND YOU MAY ALSO HAVE OTHER RIGHTS WHICH VARY FROM STATE TO STATE. Further information is available at talkaphone.com/legal

Copyright 2021 Talk-A-Phone, LLC All Rights Reserved - Rev. 11/17/2021

ACCESSORIES

Parking Deck Mounting Kit: Order model ETP-PDMK to mount on pre-poured parking deck.

Shelving: Order model ETP-MTE-SHELF to add an internal mounting shelf for accessories. Maximum two shelves per tower.

Mounting Panel: Order model ETP-MTE-PANEL to add an internal mounting panel for accessories. Maximum two panels per tower.

Call Stations

VoIP

Single Button Emergency Phone



VOIP-500E



VOIP-600E

Single Button Assistance Phone



VOIP-500C



VOIP-600H

Dual Button Emergency Phone



VOIP-500EI



VOIP-600EI

Keypad Emergency Phone



VOIP-500ECK



VOIP-600ECK