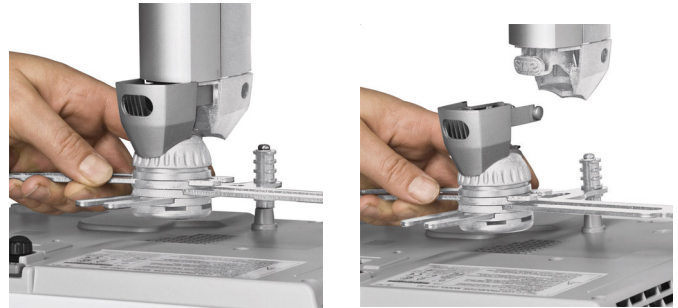


NP01UCM / NP02UCM / NP03UCM NP04UCM / NP05UCM NP30UCM

NP01UCM / NP02UCM / NP03UCM
Universal Ceiling Mounts
with snap-on attachment for
rapid mounting or dismounting.



NP04UCM / NP05CM
Height-adjustable universal
Ceiling Mounts.



NP30UCM
Universal Ceiling Mount for
heavy weight.



see more.

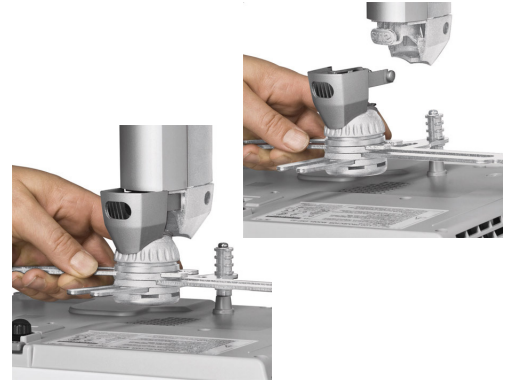
NEC Display Solutions

NP01UCM / NP02UCM / NP03UCM NP04UCM / NP05UCM NP30UCM

Universal Ceiling Mounts NP01UCM / NP02UCM / NP03UCM

TECHNICAL SPECIFICATIONS

Maximum load	7 kg
Length NP01UCM	250 mm
Length NP02UCM	500 mm
Length NP03UCM	750 mm
Tilt/Roll	25°
Swivel	360°
Colour	White/Silver
Particularity	For simple and secure mounting of the projectors onto a ceiling
Compatible with	NEC Mobile and Desktop Projectors



Universal Ceiling Mounts NP04UCM / NP05UCM

SPÉCIFICATIONS TECHNIQUES

Maximum load	12 kg
Length NP04UCM	300 - 350 mm
Length NP05UCM	500 - 750 mm
Weight	1 - 3 kg (dep. on length of bracket)
Tilt/Roll	25°
Swivel	360°
Colour	Aluminium/Silver
Particularity	Height-adjustable universal Ceiling Mounts
Compatible with	NEC Mobile and Desktop Projectors



Universal Ceiling Mount NP30UCM

SPÉCIFICATIONS TECHNIQUES

Maximum load	30 kg
Length NP30UCM	280 - 380 mm 130 mm with mast removed
Weight	1 - 3 kg (dep. on length of bracket)
Tilt/Roll	6°
Swivel	360°
Colour	White
Particularity	Universal Ceiling Mount for heavy weight
Compatible with	All NEC Projector models



All hardware and software names are brand names and/or registered trademarks of the respective manufacturers. All rights reserved. All specifications are subject to change without notice. 07/2009

www.nec-display-solutions.com

NEC Display Solutions Europe GmbH, Landshuter Alle 12-14, D-80637 Munich
Phone: +49 (0)89/99 699-0, Fax: +49 (0)89/99 699-500