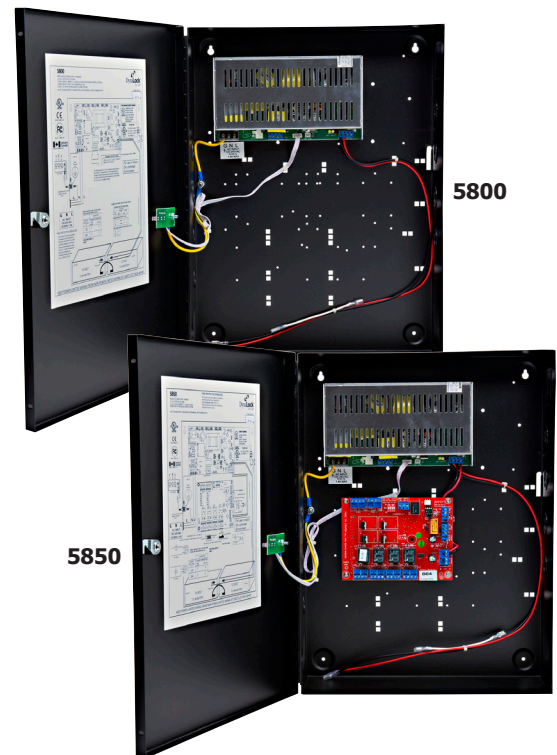


5800 Power Supply

5850 Power Supply

- **Selectable 12/24 VDC Output @ 3A Continuous**
- **Built-in Battery Charger**
- **AC Fail, Battery Presence/Fail Supervision**
- **4-Zone Power Distribution Board (5850)**
- **Supervised Fire Alarm Interface (5850)**
- **Lifetime Warranty**



Description

DynaLock 5800 and 5850 Power Supply/Chargers supply a regulated 12VDC or 24VDC at 3 Amps nominal continuous current. They're housed in hinged, locking steel enclosures capable of accommodating one or two optional 12AH lead acid rechargeable standby batteries.

Model 5850 includes a 4-zone power distribution controller featuring fused Class 2 outputs individually rated a 2A each, with selectable fail-safe, fail-secure power, or isolated dry contact signal operating modes, supervised fire alarm and access control trigger inputs, and a cascade facility, allowing controllers from two or more power supplies to be tied together for simultaneous fire alarm sequencing.

Models are UL Listed in the US and Canada, CE, FCC and Industry Canada compliance registered. See page 4 for a full breakdown of agency listings and registrations.

Features & Specifications

- Input = 120-240 VAC, 50-60Hz at 1.4 Amps Maximum
- Overall Output = 3 Amps Continuous at 12 or 24VDC
- 4-Zone Distribution Controller with Individual 2 Amp Rated Lock Outputs and Access Control Inputs (5850)
- Supervised Fire Alarm/Access Control Interface with Selectable Latching and Reset Input (5850)
- Built-in Temperature Compensated Battery Charger
- 1.5 Amps Maximum Charging Current
- Auto Switchover To Battery Standby Below 69.5 VAC
- Automatic Battery Load Test Every 48 Hours
- Battery Reversal Protection
- Low Battery Indication at 11.4/22.8 Volts
- Automatic Low Battery Disconnect at 10/20.2 Volts
- AC, DC and Battery Status LED's on Enclosure Door
- AC and Battery Failure CMOS Relay Outputs
- Battery Leads Included
- Key-Locked Enclosure Lid (Includes 2 Keys)
- Enclosure Size: 13.3"W x 17.6"H x 4.3"D (338mm x 448mm x 110mm)
- Operating Temperature: 32°F to 120°F (0°C to 49°C)
- Lifetime Warranty

Wiring Details - Model 5800

5800

REGULATED POWER SUPPLY CHARGER
 UL/ULC LISTED AS FOLLOWS:
 UL294, CAN/ULC-60839-11-1, CAN/ULC-S533 FOR ACCESS CONTROL SYSTEM
 UL864, CAN/ULC-S527 FOR COMMERCIAL FIRE
 UL603, ULC-S318 FOR BURGLARY ALARM SYSTEM
 NOTE: PLEASE REFER TO 5800 INSTALLATION MANUAL, PART NO:M5800 REV:01



Date of MFG



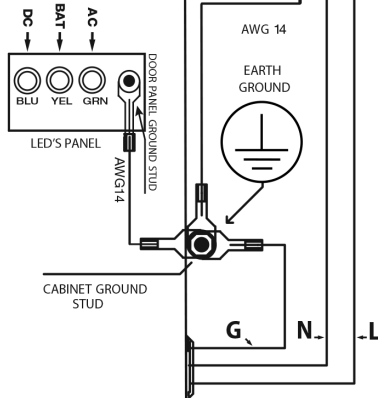
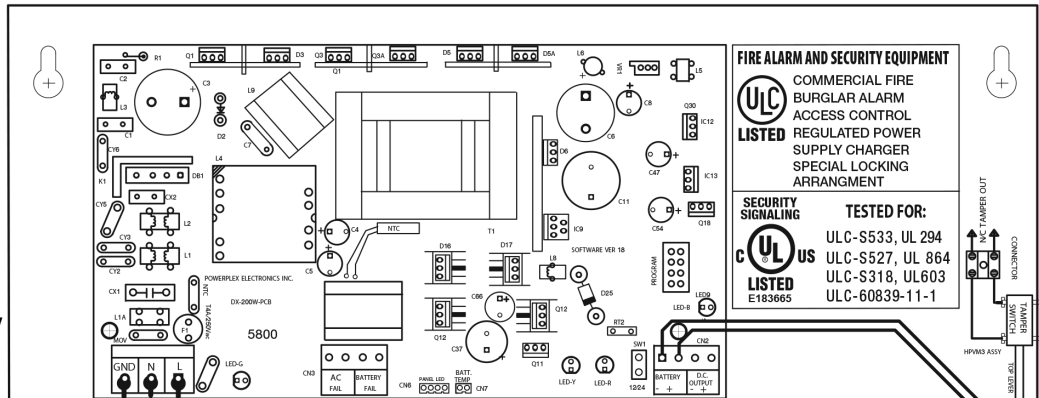
REG# T1880475-01



REG# T1880475-02



REG# T1880475-03



Regulated 12/24 VDC 3.0Amp
 (NEC and CEC CLASS 2 CIRCUIT, 60950 LPS CIRCUIT)
 For wiring size use 22 to 14AWG

For fire applications in US, all interconnecting wiring are Class E, unsupervised. For fire applications in Canada, interconnecting wiring shall be supervised by interconnected fire alarm equipment or be limited to 18 m run in a metallic conduit

For use in Indoor Dry controlled Environment

G N L
 AC INPUT
 120-240 VAC
 50-60Hz 1.4A

FIRE PROTECTIVE SIGNALING

This Product must be installed in compliance with the National Electrical Code NFPA70, as well as NFPA72 Nation a Fire Alarm Code and all applicable codes. CSA C22.1, Safety Standard for Electrical Installations, Canadian Electrical Code, Part I, CAN/ULC-S524

Battery capacity for loss of primary power at least (see table below) hours for:

OUTPUT VOLTAGE (V)	12AH BATTERY	
	STANDBY OPERATION TIME (HOURS)	LOAD (A)
12V	2	3
24V	2	3

UL294, CAN/ULC-60839-11-1:
 Grade 3"

STANDBY BATTERIES TIME/VOLTAGE CHARTS

Calculation with 20% safety margin

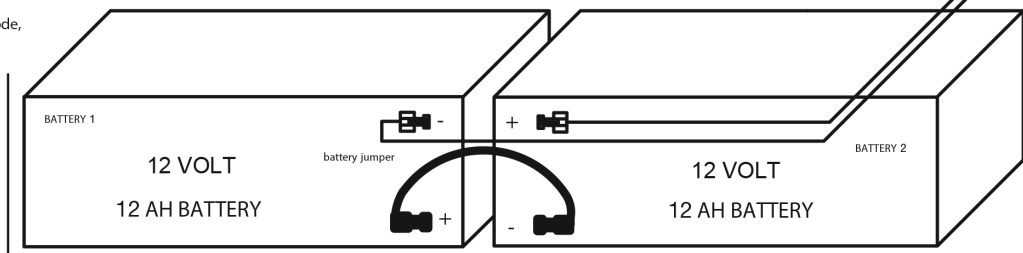
OUTPUT VOLTAGE	12AH BATTERY	
	STANDBY TIME (HOURS)	ALARM (A)
12	4	150mA
24	4	150mA

BURGLAR APPLICATIONS TO UL603

12	4	150mA	30	3.0
24	4	150mA	30	3.0

FIRE ALARM & BURGLARY APPLICATION ULC-S318

12	24
24	24



KEEP POWER LIMITED WIRING FROM NON POWER LIMITED WIRING AT LEAST 0.25" INCH APART

5800 / 5850 Power Supplies



Wiring Details - Model 5850

5850

REGULATED POWER SUPPLY CHARGER
UL/ULC LISTED AS FOLLOWS:
UL294, CAN/ULC60839-11-1, CAN/ULC-S533
POWER SUPPLY FOR ACCESS CONTROL SYSTEM

FIRE PROTECTIVE SIGNALING

This Product must be installed in compliance with National Electrical Code/NFPA70, and all applicable codes, CSA C22.1, Safety Standard for Electrical Installations, Canadian Electrical Code.



NOTE: PLEASE REFER TO 5850 INSTALLATION MANUAL, PART NO:M5850 REV:01

Date of MFG



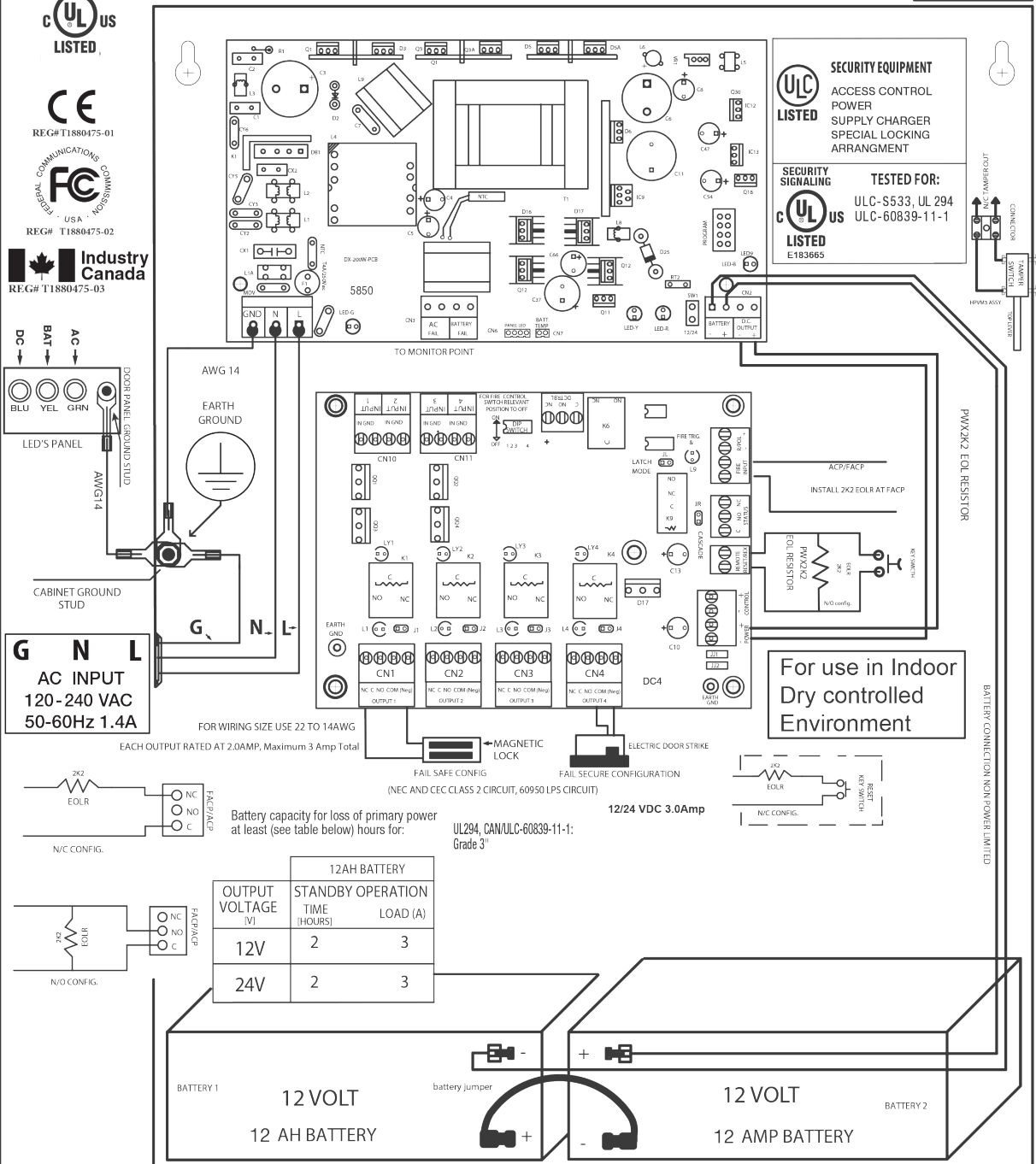
REG# T1880475-01



REG# T1880475-02



REG# T1880475-03



ULC LISTED

SECURITY EQUIPMENT
ACCESS CONTROL
POWER
SUPPLY CHARGER
SPECIAL LOCKING
ARRANGMENT

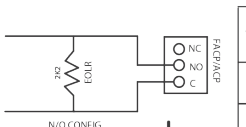
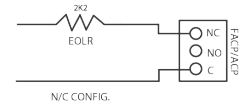
SECURITY SIGNALING

TESTED FOR:
ULC-S533, UL 294
ULC-60839-11-1

UL LISTED
E183665

AC INPUT
120-240 VAC
50-60Hz 1.4A

FOR WIRING SIZE USE 22 TO 14AWG
EACH OUTPUT RATED AT 2.0AMP, Maximum 3 Amp Total

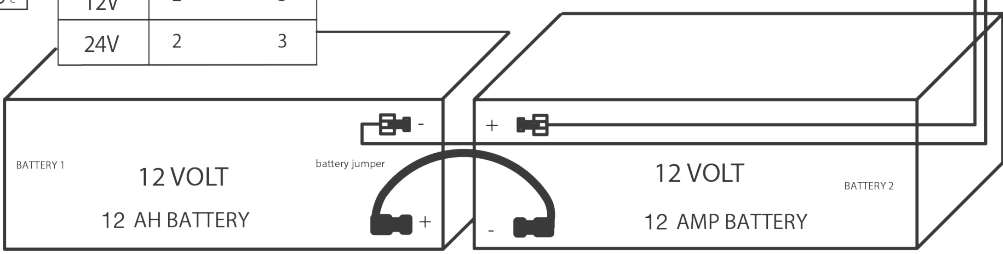


Battery capacity for loss of primary power at least (see table below) hours for:

OUTPUT VOLTAGE (V)	12AH BATTERY	
	STANDBY OPERATION TIME (HOURS)	LOAD (A)
12V	2	3
24V	2	3

UL294, CAN/ULC-60839-11-1:
Grade 3"

12/24 VDC 3.0Amp



KEEP POWER LIMITED WIRING FROM NON POWER LIMITED WIRING AT LEAST 0.25" INCH APART

Options

- BBU1-12** BATTERY BACK-UP - 12 AH @ 12VDC, 1 battery
- BBU2-12** BATTERY BACK-UP - 12 AH @ 24VDC, 2 batteries
- PC** POWER CORD - Six foot, 3-wire plug-in line cord
- TS1** SINGLE TAMPER SWITCH KIT - Supervised NC contacts monitor lid opening.
- TS2** DUAL TAMPER SWITCH KIT - Dual Supervised NC contacts monitor lid opening & enclosure bottom tamper.

Accessories

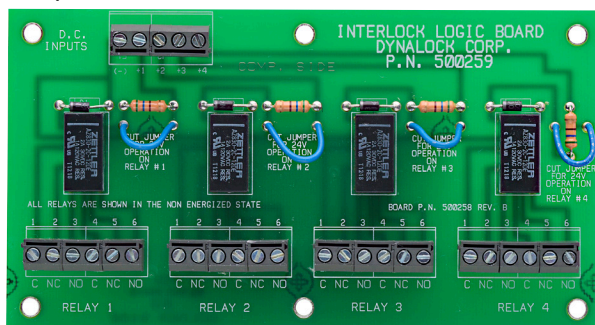
- 500259** INTERLOCK LOGIC BOARD - Accessory controller incorporating four independently triggerable 12/24 VDC, DPDT relays. Facilitates sequencing control of interlocks comprised of 2 or 3 magnetically locked doors. Multiple Interlock Logic Boards may be interconnected to support interlock systems involving more than 3 doors. Contact a DynaLock Sales Engineer for expert assistance in selecting interlock system components and request a price quotation for a Custom System Wiring Diagram, should one be required.

Supplied with double-sided adhesive mounting tape. May be mounted inside the 5800/5850 Power Supply enclosure (if no back-up batteries are installed), or remotely wired.

Interlock Logic Board Dimensions: 6"W x 3.25H x .75"D (152mm x 83mm x 19mm)

Relay Contact Rating: 2A @ 30VDC

Relay Current Draw: 35mA @ 12 or 24VDC Each



UL Listing Standards & Agency Registrations

- UL294** Access Control System Units
- UL603** Power Supplies For Use With Burglar Alarm Systems (5800)
- UL864** Control Units and Accessories For Fire Alarm Systems (5800)
- ULC-S318** Power Supplies For Burglar Alarm Systems - Canada (5800)
- CAN/ULC-S527** Control Units For Fire Alarm Systems - Canada (5800)
- CAN/ULC-60839-11-1** Alarm and Electronic Security Systems - Canada
- CAN/ULC-S533** Egress Door Securing and Releasing Devices - Canada
- CE** European Compliance
- FCC** U.S. Federal Communications Commission
- Industry Canada** Canadian Registration



DYNALOCK CORPORATION
 705 EMMETT STREET / PO BOX 2728
 BRISTOL, CT 06011-2728
 PHONE: 877-DYNALOCK / FAX: 860-585-0338
 E-MAIL: INFO@DYNALOCK.COM
 WEBSITE: WWW.DYNALOCK.COM