

Quick Setup Guide

Speco Technologies DxVX Series DVRs

Please go to www.specotech.com/software-updates.html for the latest software

Congratulations on purchasing your new VX DVR. We hope that this Quick Setup Guide will help you quickly setup and configure your new Speco Technologies DVR.

Thank you!

Product Components

DVR Unit (VXSeries)



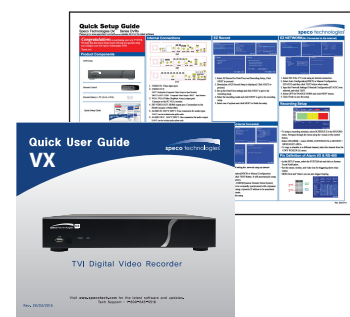
Remote Control



Remote Battery 1.5V (AAA x 2EA)



Quick Setup Guide



Quick User Guide

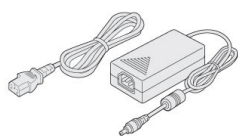
Mouse



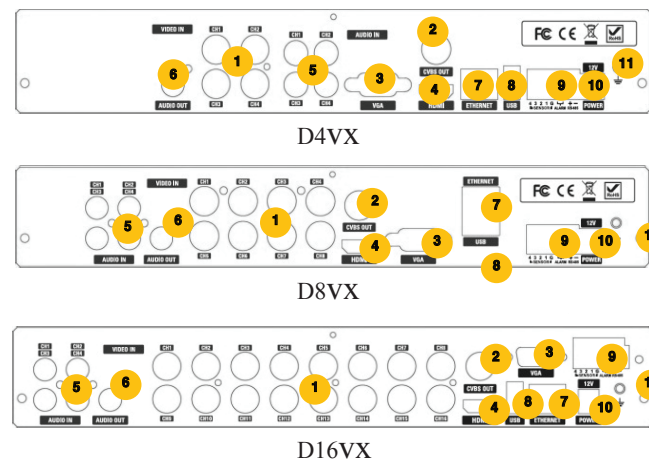
Software & Manual CD



Adaptor (DC12V 3A)
& Power Cable(110V)



Internal Connections



1. VIDEO IN: Video input port
2. VIDEO OUT: Switchable (Composite Video Output or Spot Monitor) Connects to the PC VGA monitor.
3. VGA: VGA (Video Graphics Array) output port.
4. HDMI monitor (D4VX & D8VX: Max. 1920x1080, D16VX: Max. 3840x2160)
5. AUDIO IN: Four connectors for audio input
6. AUDIO OUT: One connector for audio output
7. ETHERNET : Network terminal.
8. USB: USB terminal
9. SENSOR IN, ALARM OUT, RS-485: External sensor terminal, External alarm out terminal & RS-485 for PTZ Camera control
10. POWER: DC12V input
11. Ground: Use for ground port

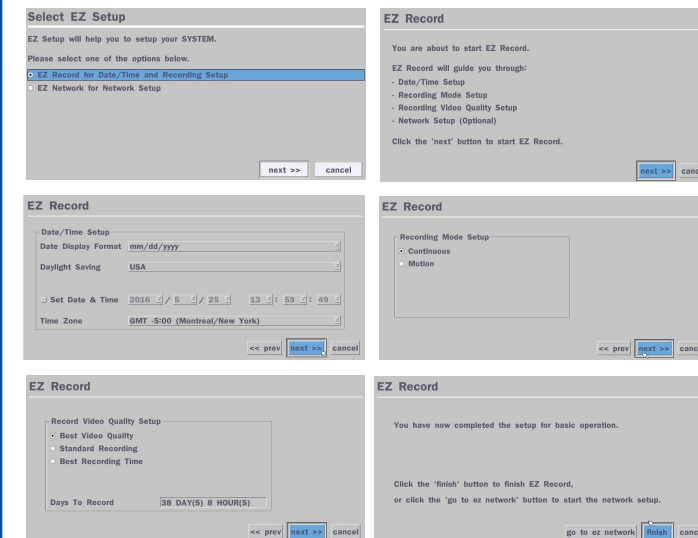
Power on the DVR

- Please follow the proper power on procedures to avoid damaging the DVR.
- Connect all necessary components, e.g. monitor and cameras, before powering the DVR.
- Check the type of power source before connecting the power adaptor to the DVR.

EZ SETUP

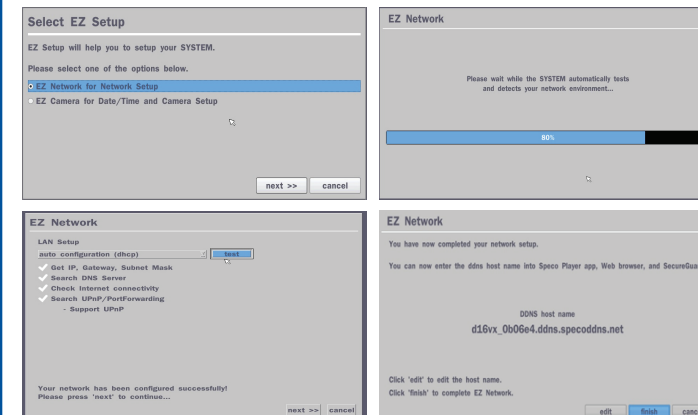
- To start the EZ Setup, right click on the mouse and select EZ SETUP from the submenu or the main menu button the main menu.
- Enter username and password. The default username is admin and Password is same with DVR setup password.
- It is strongly suggested to change the password to prevent unauthorized access.

EZ Record



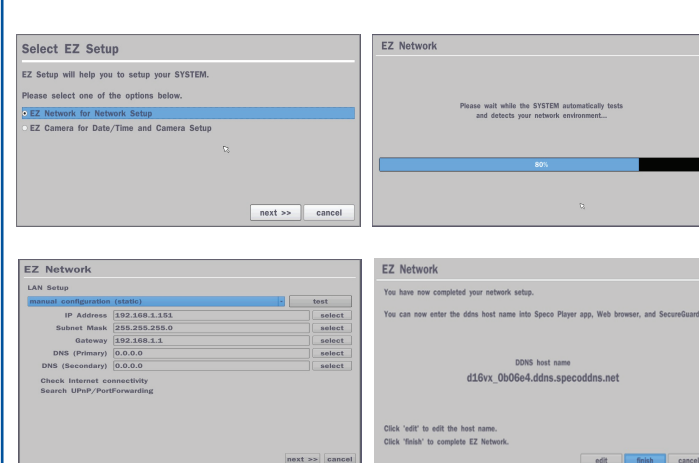
1. Select EZ Record for Date/Time and Recording Setup, Click NEXT to proceed.
2. Description of EZ Record Setup is displayed, Click NEXT to proceed.
3. Set up the Date/Time settings and click NEXT to get to the recording setup.
4. Select the recording mode and click NEXT to get to the recording setup.
5. Select one of options and click NEXT to finish the setup

EZ Network Setup

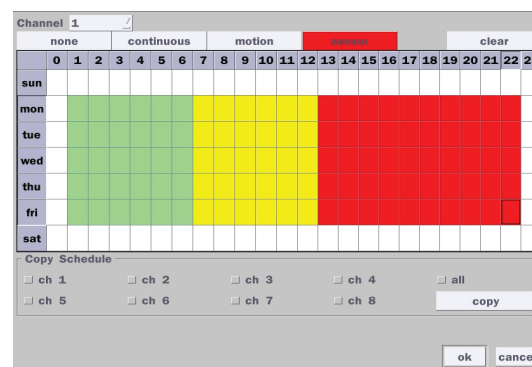


1. Under EZ Setup, select EZ Network for Network Setup
2. Select NEXT if the DVR is using an internet connection.
3. DVR automatically tries to test and detect a network environment. It will automatically setup the network setting for the DVR.
4. Select Auto Configuration(DHCP) and then click TEST button.
5. Setup DDNS setting. DDNS (Dynamic Domain Name System) allows a DNS name to be constantly synchronized with a dynamic IP address. It allows using a dynamic IP address to be associated with a static domain name. Refer to the full version manual for more information.
6. Click FINISH to save the setup.

EZ Network Setup



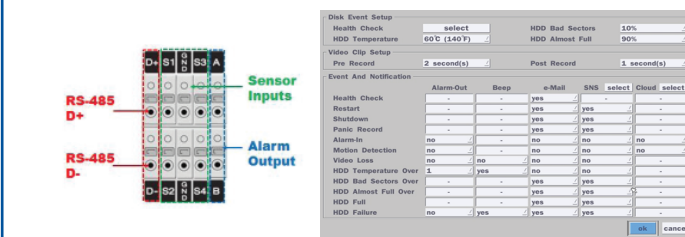
Recording Setup



- To setup a recording schedule, select SCHEDULE in the RECORD menu. Navigate through the items using the mouse or the control button.
- Select CHANNEL > select NONE, CONTINUOUS or MOTION > HIGHLIGHT AREA.
- To copy a schedule to a different channel, select the channel from the COPY SCHEDULE menu.

Pin Definition of Alarm I/O & RS-485

- In the SETUP menu, select the SYSTEM tab and click on System Event Notification.
- Set the sensor, motion, and video loss for triggering alarm relay output.
- HDD Error and Video Loss can also trigger beeping.

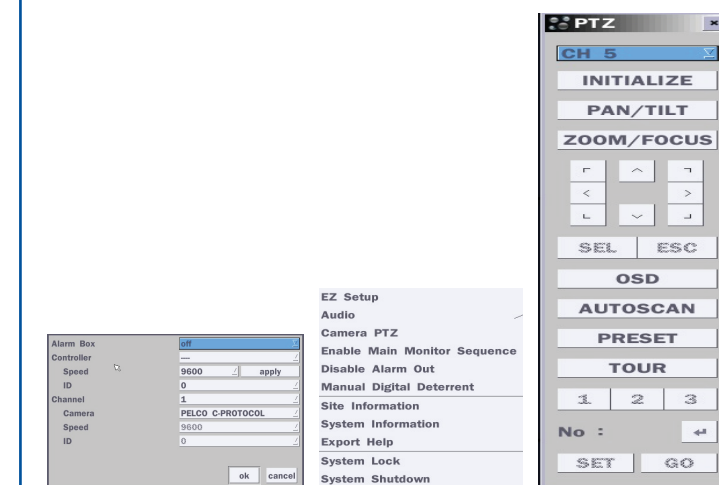


Rev. 28/03/17

A1 SECURITY CAMERAS

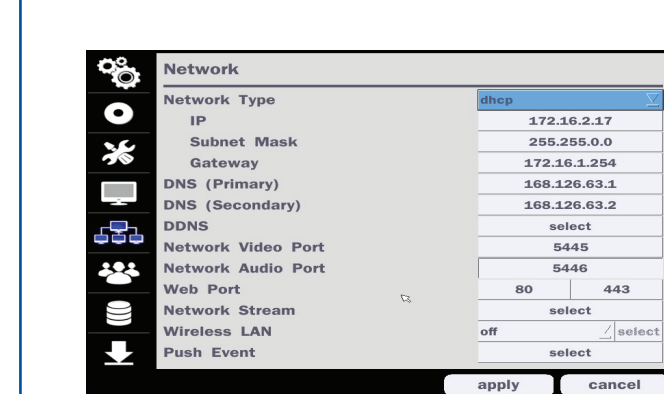
The First Name in Security

PTZ Camera Setup



- Connect the RS-485 cables of PTZ camera to the RS-485 port on the rear panel.
- In the SETUP menu, select the DEVICE tab and click on CONTROLLER & PTZ.
- Set the channel, name, speed and ID on the PTZ setup screen.
- Right click on the PTZ channel and click on PTZ from the Sub Menu.

Network Setup



Select the NETWORK tab.

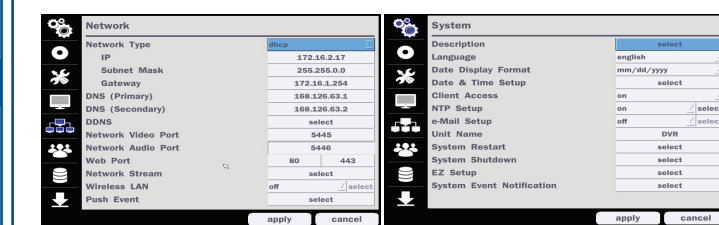
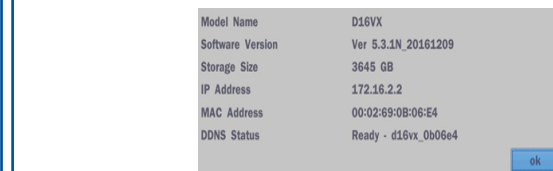
- For DHCP, set the Network Type for DHCP and exit to the menu. The IP address, Subnet Mask, Gateway and DNS settings are retrieved from network servers. DHCP is dynamic and the settings will change from time to time.
- For Static, set the Network Type to Static. Enter the IP address, Subnet Mask, Gateway and DNS. Obtain this information from the network service provider.
- The Client Access must be ON for the NVR to be accessed remotely.
- Enable DDNS for free DDNS name server.

Connect the DVR via Web-Browser Viewer

Setup Requirements

- Make sure PC is connected to the Internet.
- Make sure DVR is already setup following the Network Setup steps.
- Internet Settings
 - Start Internet Explorer; go to 'Tools' → 'Internet Options' → 'Security' tab.
 - Select 'Trusted sites' and click 'Sites' to specify its security setting.
 - Uncheck 'Require server verification (https:) for all sites in this zone'. Enter the IP address of the DVR in this field and click 'Add' to add this website to the zone.
 - In the Security Level area, click 'Custom Level'. Under 'ActiveX controls and plug-ins', set all items to 'Enable' or 'Prompt'.
 - Click 'OK' to accept the settings and close the 'Security Settings' screen.

Obtain Network Information of the DVR

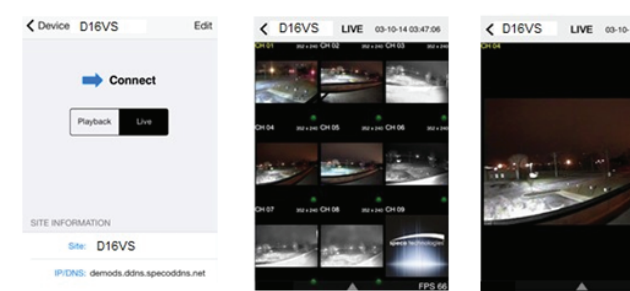


- Obtain IP address from System Information in the Sub Menu.
- In the SETUP menu, select the SYSTEM tab and enable CLIENT ACCESS.
- In the SETUP menu, select the NETWORK tab and click on NETWORK PORT. Obtain the network and web port number.
- Start Internet Explorer and enter the IP address and port of the DVR.
 - For example: http:// [ip address] : [port] → http://192.168.80.6:80
- The ActiveX controls and plug-ins dialog will be prompted for installation.
- Install the plug-ins.
- Click on 'Connect' and enter the username and password of the DVR.
 - The default user name is admin and password is same with DVR setup password.

Mobile View Software

The VX provides mobile surveillance software for the iPhone® and the Android™.

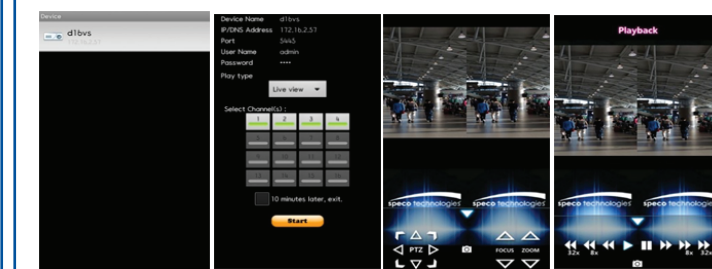
iPhone®

- Search for 'Speco Player' in the Apple App Store and install the app.
- 

- Select the ADD menu and enter site information. Click ADD to save the site information.
- Select the saved site from "Devices".
- Select a channel(s) to view.
- Select Playback/Live then click CONNECT.

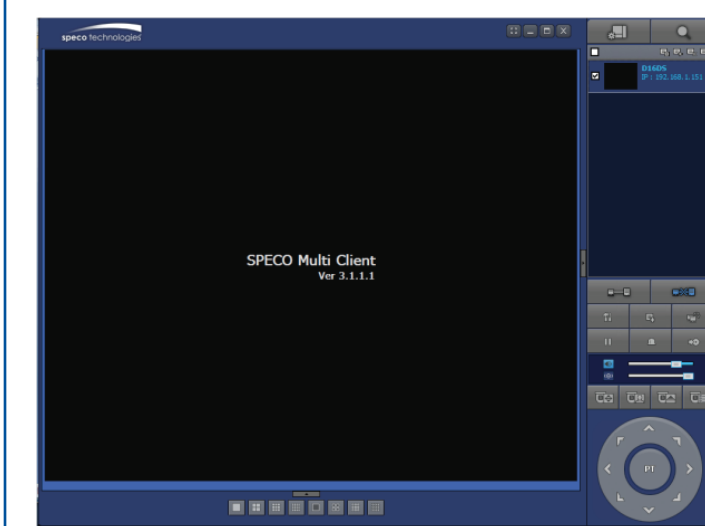
Android™

- Search for 'Speco Player' in the Android Market and install the app.



- Select the ADD menu and enter site information. Click ADD to save the site information.
- Select the saved site from "Devices" for network connection.
- Select a channel and select Live view or Playback.
- Click START button.

Connect the DVR via SpecoTech Multi-Client Viewer Software



SpecoTech Multi-Client Viewer Software is a multiple site monitoring client software that allows streaming of video and audio, and transmission of alarm signals from the DVRs over the network. The SpecoTech Multi-Client can display up to 16 DVRs and supports dual monitors. PTZ camera control is also supported by this software.

By attaching a microphone and speaker system to devices on site, the user may make bi-directional audio communication over the network.

Refer to the complete manual for more information.

The SpecoTech Multi-Client Viewer Software and manual are included on the CD.

speco technologies®

200 New Highway
Amityville, NY 11701
1-800-645-5516
www.specotech.com

Speco Technologies is constantly developing and improving products. We reserve the right to modify product design and specifications without notice and without incurring any obligation.

Rev. 28/03/17

A

B