



PROFICIENT®
Home Loudspeakers



Red Hot Design: White Knuckle Performance

A flagship product line built for the few, not the many. Its creation is free of restrictions that favor bottom line compromise ahead of top line performance. These considerations led us to produce the Proficient Signature Class.

It's Proficient's best of everything, an all star lineup featuring nine flagship speakers from home theater to whole house audio. Each speaker represents an unmatched combination of power, precision and performance.

Proficient Signature Class is all about qualities rarely seen working and playing well together in many other speaker brands. Like value and luxury. Innovation and tradition. Exuberance and poise.

The Proficient Signature Class is where sound performance you never thought possible becomes something you just can't live without. Experience the new Signature Class. Just what you would expect from Proficient.

PROFICIENT
Signature[™]



C1075s

10" Ceiling LCR Speaker

Replaces C1031 Ceiling LCR Speaker
Woofer & Midrange/Tweeter Bridge Fixed at 15°
Woofer: 10" Kevlar Cone
Midrange: 3" Pivoting Kevlar Cone
Tweeter: 1" Pivoting Aluminum Dome
Contour Switches: ±3dB Midrange & Treble
Power Handling: 200 Watts
Frequency Response: 25Hz - 22kHz
Impedance: 4Ω
Sensitivity: 94dB 1W/1m

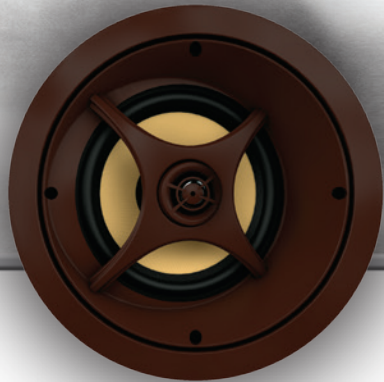


C875s

8" Ceiling LCR Speaker

Replaces C871 Ceiling LCR Speaker
Woofer & Tweeter Bridge Fixed at 15°
Woofer: 8" Kevlar Cone
Tweeter: 1" Pivoting Aluminum Dome
Contour Switches: ±3dB Bass & Treble
Power Handling: 175 Watts
Frequency Response: 28Hz - 22kHz
Impedance: 8Ω
Sensitivity: 92dB 1W/1m

Kevlar® Ceiling LCR & Ceiling Speakers



C675s

6 1/2" Ceiling LCR Speaker

New Ceiling LCR Speaker
Woofer & Tweeter Bridge Fixed at 15°
Woofer: 6 1/2" Kevlar Cone
Tweeter: 1" Pivoting Aluminum Dome
Contour Switches: ±3dB Bass & Treble
Power Handling: 125 Watts
Frequency Response: 32Hz - 22kHz
Impedance: 8Ω
Sensitivity: 90dB 1W/1m



C895s

8" Ceiling Speakers

Replaces C851 Ceiling Speakers
Woofers: 8" Kevlar Cone
Tweeters: 1" Pivoting Aluminum Dome
Contour Switches: ±3dB Bass & Treble
Power Handling: 175 Watts
Frequency Response: 28Hz - 22kHz
Impedance: 8Ω
Sensitivity: 92dB 1W/1m



C695s

6 1/2" Ceiling Speakers

Replaces C646 Ceiling Speakers
Woofers: 6 1/2" Kevlar Cone
Tweeters: 1" Pivoting Aluminum Dome
Contour Switches: +3dB Bass & Treble
Power Handling: 150 Watts
Frequency Response: 32Hz - 22kHz
Impedance: 8Ω
Sensitivity: 90dB 1W/1m



IW675s

6½" Inwall LCR Speaker

Replaces IW655 Inwall LCR Speaker

Woofers: Two 6½" Kevlar Cone

Tweeter: 1" Pivoting Aluminum Dome

Contour Switches: ±3dB Bass & Treble

Power Handling: 150 Watts

Frequency Response: 40Hz - 22kHz

Impedance: 8Ω

Sensitivity: 90dB 1W/1m



IW575s

5¼" Inwall LCR Speaker

Replaces IW555 Inwall LCR Speaker

Woofers: Two 5¼" Kevlar Cone

Tweeter: 1" Pivoting Aluminum Dome

Contour Switches: ±3dB Bass & Treble

Power Handling: 125 Watts

Frequency Response: 50Hz - 22kHz

Impedance: 8Ω

Sensitivity: 88dB 1W/1m

Kevlar® Inwall LCR & Inwall Speakers



W895s

8" Inwall Speakers

Replaces W852 Inwall Speakers

Woofers: 8" Kevlar Cone

Tweeters: 1" Pivoting Aluminum Dome

Contour Switches: ± 3 dB Bass & Treble

Power Handling: 175 Watts

Frequency Response: 28Hz - 22kHz

Impedance: 8 Ω

Sensitivity: 92dB 1W/1m



W695s

6 1/2" Inwall Speakers

Replaces W692 Inwall Speakers

Woofers: 6 1/2" Kevlar Cone

Tweeters: 1" Pivoting Aluminum Dome

Contour Switches: +3dB Bass & Treble

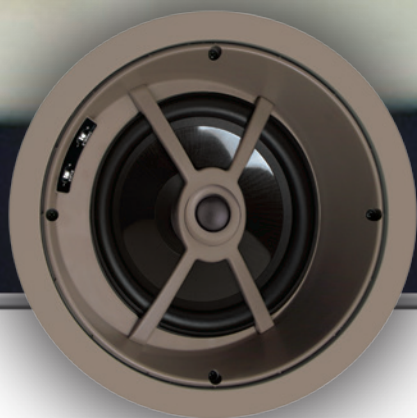
Power Handling: 150 Watts

Frequency Response: 32Hz - 22kHz

Impedance: 8 Ω

Sensitivity: 90dB 1W/1m

PROFICIENT
Signature[™]



C841

8" Ceiling LCR Speaker

Woofer & Tweeter Bridge Fixed at 15°

Woofer: 8" Graphite Cone

Tweeter: 1" Pivoting Silk Dome

Contour Switches: ±3dB Bass & Treble

Power Handling: 150 Watts

Frequency Response: 40Hz - 22kHz

Impedance: 8Ω

Sensitivity: 92dB 1W/1m



C661

6½" Ceiling LCR Speaker

Woofer & Tweeter Bridge Fixed at 15°

Woofer: 6½" Graphite Cone

Tweeter: 1" Pivoting Aluminum Dome

Contour Switches: n/a

Power Handling: 125 Watts

Frequency Response: 36Hz - 22kHz

Impedance: 8Ω

Sensitivity: 92dB 1W/1m



C656

6½" Ceiling LCR Speaker

Woofer & Tweeter Bridge Fixed at 15°

Woofer: 6½" Graphite Cone

Tweeter: 1" Pivoting Silk Dome

Contour Switches: n/a

Power Handling: 100 Watts

Frequency Response: 45Hz - 20kHz

Impedance: 8Ω

Sensitivity: 91dB 1W/1m

Graphite Ceiling LCR & Ceiling Speakers



C801

8" Ceiling Speakers

Woofers: 8" Graphite Cone
Tweeters: 1" Pivoting Aluminum Dome
Contour Switches: +3dB Bass & Treble
Power Handling: 150 Watts
Frequency Response: 28Hz - 22kHz
Impedance: 8Ω
Sensitivity: 92dB 1W/1m



C641

6 1/2" Ceiling Speakers

Woofers: 6 1/2" Graphite Cone
Tweeters: 1" Pivoting Aluminum Dome
Contour Switches: +3dB Bass & Treble
Power Handling: 125 Watts
Frequency Response: 32Hz - 22kHz
Impedance: 8Ω
Sensitivity: 92dB 1W/1m



C626

6 1/2" Ceiling Speakers

Woofers: 6 1/2" Graphite Cone
Tweeters: 1" Pivoting Silk Dome
Contour Switches: n/a
Power Handling: 100 Watts
Frequency Response: 45Hz - 20kHz
Impedance: 8Ω
Sensitivity: 91dB 1W/1m

PROFICIENT
Protege[™]



IW630

6 1/2" Inwall LCR Speaker

Woofers: Two 6 1/2" Graphite Cone
Tweeter: 1" Pivoting Soft Dome
Contour Switches: ± 3 dB Bass & Treble
Power Handling: 125 Watts
Frequency Response: 55Hz - 20kHz
Impedance: 8 Ω
Sensitivity: 90dB 1W/1m



IW530

5 1/4" Inwall LCR Speaker

Woofers: Two 5 1/4" Graphite Cone
Tweeter: 1" Pivoting Aluminum Dome
Contour Switches: ± 3 dB Bass & Treble
Power Handling: 100 Watts
Frequency Response: 65Hz - 20kHz
Impedance: 8 Ω
Sensitivity: 88dB 1W/1m

Graphite Inwall LCR & Inwall Speakers



W802

8" Inwall Speakers

Woofers: 8" Graphite Cone
Tweeters: 1" Pivoting Aluminum Dome
Contour Switches: +3dB Bass & Treble
Power Handling: 150 Watts
Frequency Response: 28Hz - 22kHz
Impedance: 8Ω
Sensitivity: 92dB 1W/1m



W682

6½" Inwall Speakers

Woofers: 6½" Graphite Cone
Tweeters: 1" Pivoting Aluminum Dome
Contour Switches: +3dB Bass & Treble
Power Handling: 125 Watts
Frequency Response: 32Hz - 22kHz
Impedance: 8Ω
Sensitivity: 92dB 1W/1m



C825TT

8" Twin-Tweeter Ceiling Speaker

Woofer: 8" Dual Voice Coil Graphite Cone
Tweeters: Two 1" Pivoting Aluminum Dome
Contour Switches: +3dB Bass & Treble
Power Handling: 150 Watts
Frequency Response: 28Hz - 22kHz
Impedance: 8Ω
Sensitivity: 92dB 1W/1m

PROFICIENT
Protege[™]



C651

6 1/2" Ceiling LCR Speaker

Woofer & Tweeter Bridge Fixed at 15°

Woofer: 6 1/2" Polypropylene Cone

Tweeter: 1" Pivoting Silk Dome

Contour Switches: n/a

Power Handling: 100 Watts

Frequency Response: 45Hz - 20kHz

Impedance: 8Ω

Sensitivity: 91dB 1W/1m



C791

8" Ceiling Speakers

Woofers: 8" Polypropylene Cone

Tweeters: 1" Pivoting Soft Dome

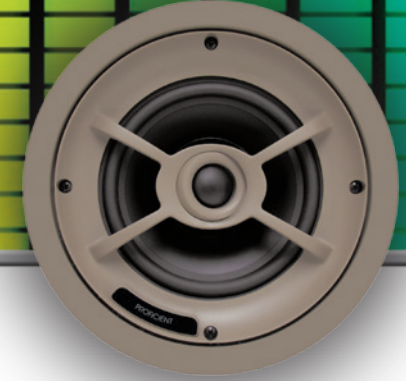
Contour Switches: n/a

Power Handling: 125 Watts

Frequency Response: 36Hz - 20kHz

Impedance: 8Ω

Sensitivity: 92dB 1W/1m



C621

6 1/2" Ceiling Speakers

Woofers: 6 1/2" Polypropylene Cone

Tweeters: 1" Pivoting Silk Dome

Contour Switches: n/a

Power Handling: 100 Watts

Frequency Response: 45Hz - 20kHz

Impedance: 8Ω

Sensitivity: 91dB 1W/1m

Performance Ceiling Speakers



C612

6½" Ceiling Speakers

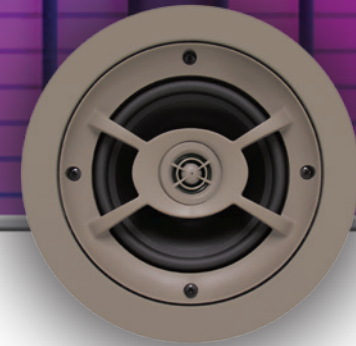
Woofers: 6½" Polypropylene Cone
Tweeters: 1" Pivoting Soft Dome
Contour Switches: n/a
Power Handling: 85 Watts
Frequency Response: 45Hz - 20kHz
Impedance: 8Ω
Sensitivity: 91dB 1W/1m



C606

6½" Ceiling Speakers

Woofers: 6½" Polypropylene Cone
Tweeters: ¾" Soft Dome
Contour Switches: n/a
Power Handling: 75 Watts
Frequency Response: 45Hz - 20kHz
Impedance: 8Ω
Sensitivity: 90dB 1W/1m



C501

5¼" Ceiling Speakers

Woofers: 5¼" Polypropylene Cone
Tweeters: ½" Pivoting Polyamide Hard Dome
Contour Switches: n/a
Power Handling: 75 Watts
Frequency Response: 40Hz - 20kHz
Impedance: 8Ω
Sensitivity: 90dB 1W/1m

PROFICIENT
Protege[™]



C635

6½" Ceiling Speakers

New Ceiling Speakers

Woofer: 6½" Aluminum Cone

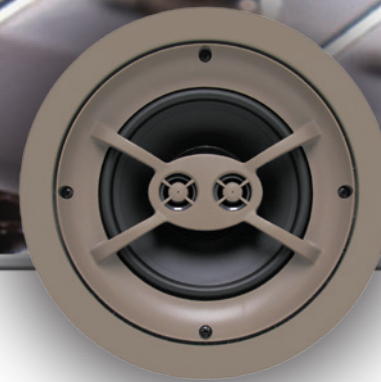
Tweeter: 1" Pivoting Titanium Dome

Power Handling: 100 Watts

Frequency Response: 40Hz - 22kHz

Impedance: 8Ω

Sensitivity: 92dB 1W/1m



C625TT

6½" Twin-Tweeter Ceiling Speaker

Woofer: 6½" Dual Voice Coil Polypropylene Cone

Tweeters: Two ½" Hard Dome

Power Handling: 75 Watts

Frequency Response: 36Hz - 20kHz

Impedance: 8Ω

Sensitivity: 92dB 1W/1m

Performance Ceiling & Inwall Speakers



W672

6½" Inwall Speakers

Woofers: 6½" Polypropylene Cone

Tweeters: 1" Pivoting Silk Dome

Power Handling: 100 Watts

Frequency Response: 36Hz - 20kHz

Impedance: 8Ω

Sensitivity: 91dB 1W/1m



W667

6½" Inwall Speakers

Woofers: 6½" Polypropylene Cone

Tweeters: ¾" Soft Dome

Power Handling: 75 Watts

Frequency Response: 45Hz - 20kHz

Impedance: 8Ω

Sensitivity: 90dB 1W/1m

PROFICIENT
Protege™



IWS85

Passive Dual 8" Inwall Sub

Woofers: Two 8" Long Excursion Graphite Cones

Power Handling: 200 Watts RMS

Frequency Response: 30Hz - 120Hz

Includes Thin-Bezel Grille w/Neo Magnets

Use With Proficient M3 Amp/Crossover



IWS105

Passive 10" Inwall Sub

Woofers: 10" Long Excursion Treated Paper Cone
w/Inverted Ferrite Magnet Structure

Power Handling: 250 Watts RMS

Frequency Response: 36Hz - 150Hz

Includes Thin-Bezel Grille w/Neo Magnets

Use With Proficient M3 Amp/Crossover



ICS11

Passive 10" Ceiling Sub

Woofers: 10" Long Excursion Graphite Cone

Power Handling: 175 Watts RMS

Frequency Response: 30Hz - 120Hz

Includes Thin-Bezel Grille w/Neo Magnets

Use With Proficient M3 Amp/Crossover

Architectural & Floor-Standing Subwoofers



FS12

12" Powered Subwoofer

Woofers: Two 12" Polypropylene-Coated Fiber Composite
One Front-Firing Active; One Down-Firing Passive

Amplifier Type: Class D Amp

Power Rating Continuous: 300 Watts RMS

Power Rating Peak: 600 Watts Peak

Frequency Response: 28Hz - 150Hz

Subwoofer Output: 106dB SPL

Inputs: Left & Right Line Level, LFE

Outputs: Line Level High-Pass

Crossover: 50Hz - 150Hz; Bypass



FS10

10" Powered Subwoofer

Woofers: Two 10" Polypropylene-Coated Fiber Composite
One Front-Firing Active; One Down-Firing Passive

Amplifier Type: Class D Amp

Power Rating Continuous: 250 Watts RMS

Power Rating Peak: 500 Watts Peak

Frequency Response: 30Hz - 150Hz

Subwoofer Output: 103dB SPL

Inputs: Left & Right Line Level, LFE

Outputs: Line Level High-Pass

Crossover: 50Hz - 150Hz; Bypass



FS8

8" Powered Subwoofer

Woofers: Two 8" Polypropylene-Coated Fiber Composite
One Front-Firing Active; One Down-Firing Passive

Amplifier Type: Class D Amp

Power Rating Continuous: 200 Watts RMS

Power Rating Peak: 400 Watts Peak

Frequency Response: 32Hz - 150Hz

Subwoofer Output: 100dB SPL

Inputs: Left & Right Line Level, LFE

Outputs: Line Level High-Pass

Crossover: 50Hz - 150Hz; Bypass

PROFICIENT
Protege[™]



AW830

8" Outdoor/Indoor Speakers

Woofers: 8" Polypropylene Cone
Midrange: 3" Graphite Cone
Tweeters: 1" Pivoting Supernil Soft Dome
Power Handling: 175 Watts
Frequency Response: 35Hz - 20kHz
Impedance: 4Ω
Sensitivity: 89dB 1W/1m



AW650

6½" Outdoor/Indoor Speakers

Woofers: 6½" Polypropylene Cone
Tweeters: 1" Pivoting Supernil Soft Dome
Power Handling: 150 Watts
Frequency Response: 37Hz - 20kHz
Impedance: 8Ω
Sensitivity: 89dB 1W/1m



AW525

5¼" Outdoor/Indoor Speakers

Woofers: 5¼" Polypropylene Cone
Tweeters: 1" Pivoting Supernil Soft Dome
Power Handling: 125 Watts
Frequency Response: 45Hz - 20kHz
Impedance: 8Ω
Sensitivity: 89dB 1W/1m

Outdoor/Indoor Speakers



AW400

4" Outdoor/Indoor Speakers

Woofers: 4" Polypropylene Cone
Tweeters: ¾" Supernil Soft Dome
Power Handling: 100 Watts
Frequency Response: 55Hz - 20kHz
Impedance: 8Ω
Sensitivity: 87dB 1W/1m



AW600TT

6½" TT Outdoor/Indoor Speakers

Woofer: 6½" Dual Voice Coil Polypropylene Cone
Tweeters: Two 1" Pivoting Supernil Soft Dome
Power Handling: 125 Watts
Frequency Response: 50Hz - 20kHz
Impedance: 4Ω
Sensitivity: 91dB 1W/1m



AW500TT

5¼" TT Outdoor/Indoor Speakers

Woofer: 5¼" Dual Voice Coil Polypropylene Cone
Tweeters: Two 1" Pivoting Supernil Soft Dome
Power Handling: 100 Watts
Frequency Response: 60Hz - 20kHz
Impedance: 4Ω
Sensitivity: 89dB 1W/1m

PROFICIENT
Outdoor[™]



PROFICIENT

1800 S McDowell Blvd • Petaluma, CA 94954 • 800.472.5555 • Fax 707.283.5901 • proficientaudio.com

©2016 Core Brands, LLC. All rights reserved. Proficient® is a registered trademark of Core Brands, LLC, a Nortek company.

Kevlar is a registered trademark of DuPont

HLB0916