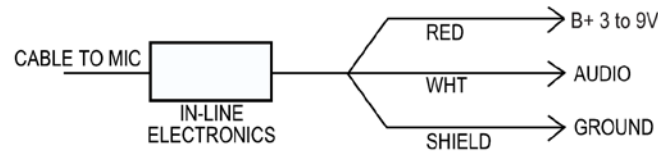


CM311
CM311L
CM311AESH

6000H50930
6000H50940
6000H50950

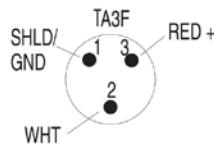
XLR version
3-pin mini XLR
4-pin mini XLR

Wiring:



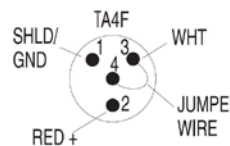
CM311L 3-pin mini XLR

pin 1 shield
pin 2 white
pin 3 red



CM311AESH 4-pin mini XLR

pin 1 shield
pin 2 red
pin 3 white
pin 4 jumper to pin 3



www.akg.com

AKG Acoustics GmbH
Lemböckgasse 21-25, 1230 Vienna/AUSTRIA, phone: + 43 1 86654 0
e-mail: series@akg.com

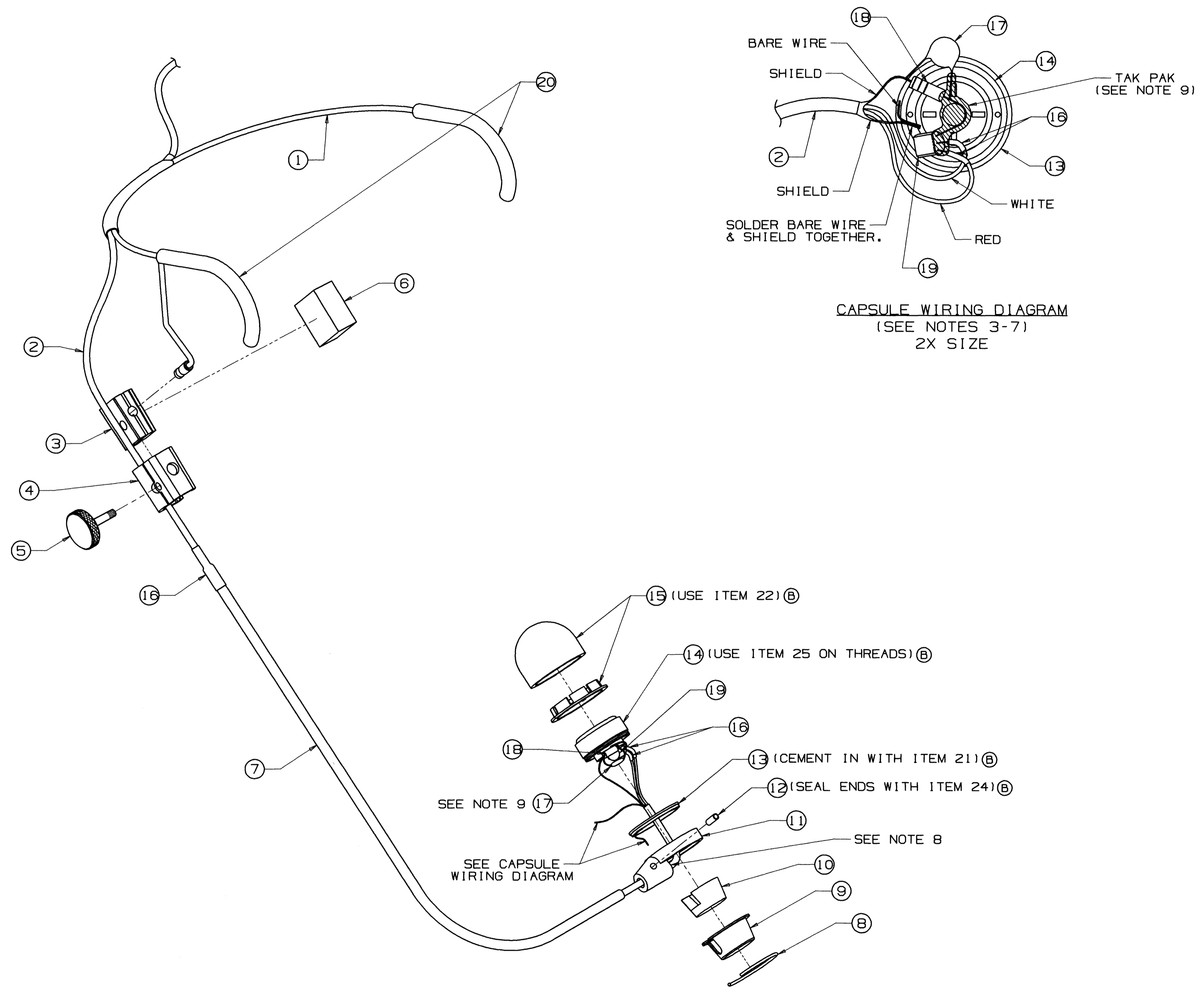
AKG Acoustics, U.S.
8400 Balboa Boulevard, Northridge, CA 91329, U.S.A., phone: + 1 818 920 3212
e-mail: akgusa@harman.com

For other products and distributors worldwide visit www.akg.com
Specifications subject to change without notice.



REVISIONS				APPROVALS				
E.C.N.	ZONE	REV	DESCRIPTION	DATE	OWN	CHK	CM	PE
		(A)	INITIAL RELEASE FOR PRODUCTION	7-15-97	JC	PJ		PJ
00N0127		(B)	ITEM 3 WAS C.P.N. D 8142-8, ADDED ITEMS 21-25 PUT "H" IN DIST. BOX, REVISED ITEM CALLOUT IN EXPLODED VIEW, REPLACED DRAWING BORDER	2-18-00	EDT	JG	KZ	PJ
00N0269	C2, B2	(C)	ITEM 21 WAS S 6364-4, REVISE NOTE 9.	3-27-00	EDT	JG	KZ	PJ
00N0572	B2	(D)	ITEM 21 WAS S 5787-9	8-14-00	EDT	JG	CP	PJ

- NOTES:
- PRETEST ITEM 14.
 - SOLDER A PIECE OF BARE WIRE (APPROX. 1/2" LONG) TO ITEM 13, THEN THREAD IT TO ITEM 14 USING ITEM 25.
 - SOLDER ITEMS 17, 18, & 19 TO ITEM 14 WHILE BEING SURE TO ALIGN ITEMS WITH CABLE ENTRANCE OF ITEM 11. CUT CAPACITOR LEADS (ITEM 17) 1/4" LONG. AFTER SOLDERING, BEND CAPACITOR OVER SO IT IS TOWARD THE CENTER OF CAPSULE & FLAT AS POSSIBLE AS SHOWN IN EXPLODED VIEW.
 - CEMENT ITEM 13 TO ITEM 11 WITH ITEM 21. MAKING SURE TO ALIGN THE BARE PIECE OF WIRE UNDER THE CABLE ENTRANCE OF ITEM 11 AS SHOWN IN THE CAPSULE WIRING DIAGRAM. LET CURE OVERNIGHT.
 - INSERT ITEM 7 INTO ITEM 11.
 - RUN CABLE (ITEM 2) THRU ITEMS 7 & 11.
 - SOLDER CABLE LEADS OF ITEM 2 AS SHOWN IN CAPSULE WIRING DIAGRAM.
 - ALIGN THE DIMPLE OF ITEM 7 WITH THE HOLE OF ITEM 11 & INSERT ITEM 12, THEN ADD A DROP OF ITEM 21 TO ITEMS 7 & 11 IN AREA SHOWN.
 - BE SURE ALL LEADS ARE NOT SHORTING ON BACK OF CAPSULE HOUSING & COVER EXPOSED LEADS WITH ITEM 23 (DO NOT SPILL TAK-PAK ON MIC CAPSULE). FOR MOISTURE PROOFING, COVER CAPSULE TERMINAL, FET LEADS (ITEM 19), & LEAD OF ITEM 18 AS SHOWN IN CAPSULE WIRING DIAGRAM. MAKE SURE TAK-PAK DOES NOT CONTACT BLACK PLASTIC DAMPING RING ON THE BACK OF THE CAPSULE. EXTEND TAK-PAK COVERAGE OVER LEAD OF ITEM 17 AS SHOWN. (PROCEDURE 126010)
 - PLACE ITEM 10 INTO ITEM 9.
 - INSERT ITEMS 9 & 10 INTO ITEM 11.
 - INSERT ITEM 8 INTO ITEM 11 TO TRAP ITEM 9.
 - ON ITEM 15, CEMENT FOAM & PLASTIC RETAINER USING ITEM 22. ALLOW CEMENT TO PARTIALLY SET BEFORE ATTACHING PIECES TOGETHER.
 - PLACE ITEM 15 OVER ITEM 14.
 - ATTACH ITEM 4 TO ITEM 7 WITH ITEM 3.
 - ADD 3/4" LONG, 3/16 SHRINK TUBING (ITEM 16) TO ITEMS 7 & 2.
 - ADD 1/2" LONG, .125 SHRINK TUBING (ITEM 16) TO ITEM 2, 6" FROM THE END OF ITEM 7.
 - AFTER TEST WITH COMPLETE UNIT, INSERT ITEM 1 INTO ITEMS 3 & 4, & SECURE WITH ITEM 5.
 - ASSEMBLE 3/4" LONG, 1/4" SHRINK TUBING (ITEM 16) WITH ITEMS 1 & 2 AS SHOWN, SO THAT CABLE (ITEM 2) EXITS ITEM 16 AT THE CENTERLINE OF ITEM 1.
 - ATTACH ITEM 7 TO ITEM 3.
 - PLACE ITEM 20 OVER ITEM 1 AS SHOWN (2 PLCS.)

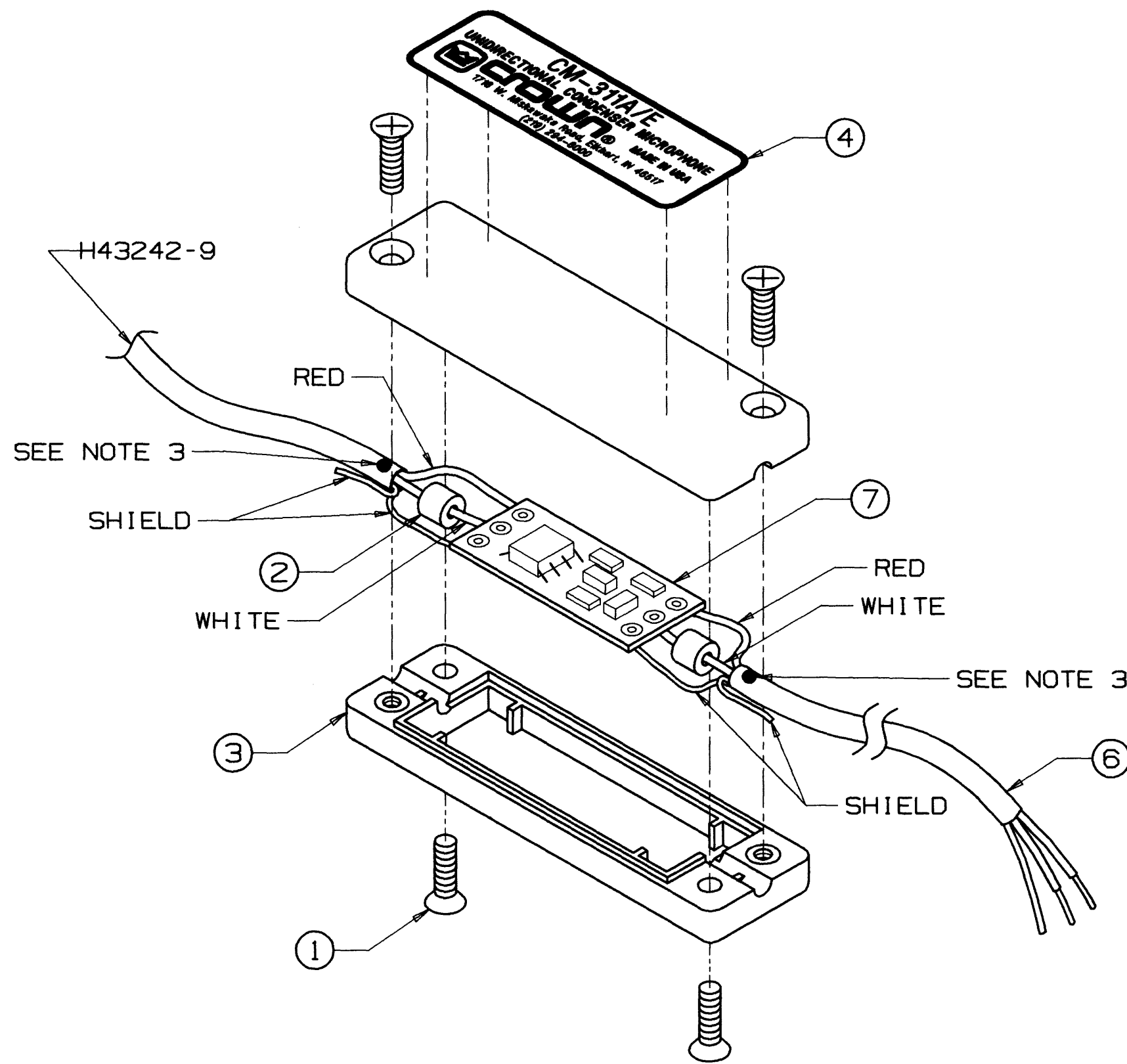


ITEM	QTY	DESCRIPTION	PART NO.
(B) 25	X	THREADLOCKER, TITAN 7242 50ml	S 2217-8
(B) 24	X	RTV SILICONE, BLK	S 5603-6
(B) 23	X	LOCTITE TAK PAK ADHESIVE	S 5724-0
(B) 22	X	ELMER'S GLUE-ALL 8oz	S 6343-8
(D) (C) (B) 21	1 oz.	ADHESIVE, BLACK MAGIC 737	S 6364-4
(B) 20	2	VINYL TUBE, CM-311 EAR PAD	D 8306-9
(B) 19	1	J202 N-CHANNEL JFET	C 7597-5
(B) 18	1	100.MOHM .25W 5% THICK FILM	C 4206-6
(B) 17	1	56PF 100V 5% NOP CERAMIC DISC	C 8688-1
(B) 16	1	TUBING, CM-311 HEADBAND	H43241-1
(B) 15	1	WINDSCREEN ASM.	M45887-3
(B) 14	1	CAPSULE, EM-21 SORTED LOW-LOW	D 8551-0
(B) 13	1	INSERT, CAPSULE HLDR CM-311	D 8159-2
(B) 12	1	SPRING ROLL PIN, 3/32 DIA 1/4 LG	C 9364-8
(B) 11	1	CAPSULE HOLDER, PLASTIC CM-311	D 8144-4
(B) 10	1	REAR FOAM LINER, CM-311	D 8125-3
(B) 9	1	SCREEN, CM-311	D 8128-7
(B) 8	1	RING CLIP, CM-311 HD HSG	D 8141-0
(B) 7	1	BOOM, CM-311A #2 PC BLK	102052-1
(B) 6	1	FOAM PAD, CM-312	D 8399-4
(B) 5	1	THUMBSCREW, D 9040-3 BLK	D 9041-1
(B) 4	1	SLEEVE, CM-311A/312A HS	101515-1
(B) 3	1	INSERT, CM311A SLEEVE #2	125323-1
(B) 2	1	CABLE, CM-311	H43242-9
(B) 1	1	HEADPIECE ASM, VINYL #2	D 8362J1
(B) X		ASM, CM-311A HEADBAND	102053-1

DISTRIBUTION	DWN	JC	7-15-97	CROWN INTERNATIONAL, INC.	1718 WEST MISHAWAKA RD. ELKHART, IN 46517 PHONE (219) 294-8000 WWW.CROWNINTL.COM
H	CHK	PJ	9-4-97		
CROWN/MIC	CM				
102053.PRT	PE	PJ	9-4-97		
TOLERANCE UNLESS OTHERWISE SPECIFIED				TITLE	
.00 = ±.020				SIZE/DWG NO.	
.000 = ±.010				D 102053	
ANGLES = ±1.0°				SCALE FULL PROJ NO. M0357 SHEET 1 OF 1	
DO NOT SCALE DRAWING				REV (D)	

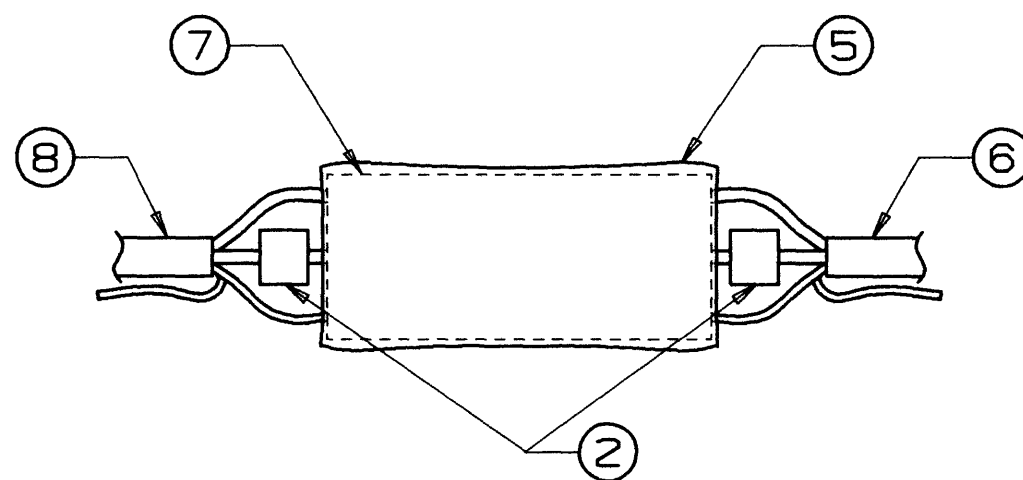
UNCONTROLLED
UNLESS OTHERWISE MARKED IN RED INK BY CM AS A CONTROLLED COPY, COPIES OF THESE DOCUMENTS AND ASSOCIATED ELECTRONIC FILES ARE UNCONTROLLED AND ARE FOR REFERENCE ONLY.
THESE DRAWINGS, SPECIFICATIONS AND ASSOCIATED ELECTRONIC FILES ARE THE PROPERTY OF CROWN INTERNATIONAL, INC. AND SHALL NOT BE REPRODUCED, COPIED, OR USED AS THE BASIS FOR THE MANUFACTURE OR SALE OF APPARATUS OR DEVICES WITHOUT PERMISSION.

E.C.	ZONE	REV	DESCRIPTION	DATE	BY	APPROVALS			
						CHK	ME	CM	PE
		(A)	INITIAL RELEASE.	11-7-97	JC	PJ			PJ
99E0326	B3,C3	(B)	ADDED NOTE 4 & ITEM 8.	8-18-99	JC		N/A	JL	
		(C)							
		(D)							
		(E)							



NOTES:

- 1) AFTER ITEM 6 & H43242-9 HAVE BEEN SOLDERED TO MODULE (ITEM 7), PLACE SHRINK TUBING (ITEM 5) OVER MODULE AS SHOWN IN TOP VIEW.
- 2) WHEN JOINING ITEMS 3 TOGETHER, HALF OF THE SHIELD OF ITEMS 6 & 8 IS TO BE PULLED BACK & PLACED IN GROOVES OF HOUSINGS (ITEM 3) FOR GROUND CONTACT.
- 3) ON ITEM 6 & H43242-9, ADD 1 DROP OF BLACK MAX (ITEM 8) ON AREAS SHOWN.
- (B) 4) FOR EQM311, DO NOT USE CABLE H43242-9. JOIN HOUSINGS (ITEM 3) TOGETHER WITH SCREWS (ITEM 1). DO NOT APPLY SHRINK TUBE, DO NOT INSERT PWA INTO HOUSINGS, & DO NOT USE BLACK MAX. INSERT PWA/CABLE INTO STATIC BAG, THEN INSERT STATIC BAG, HOUSINGS, & FERRITE BEAD INTO PLASTIC ZIP BAG.



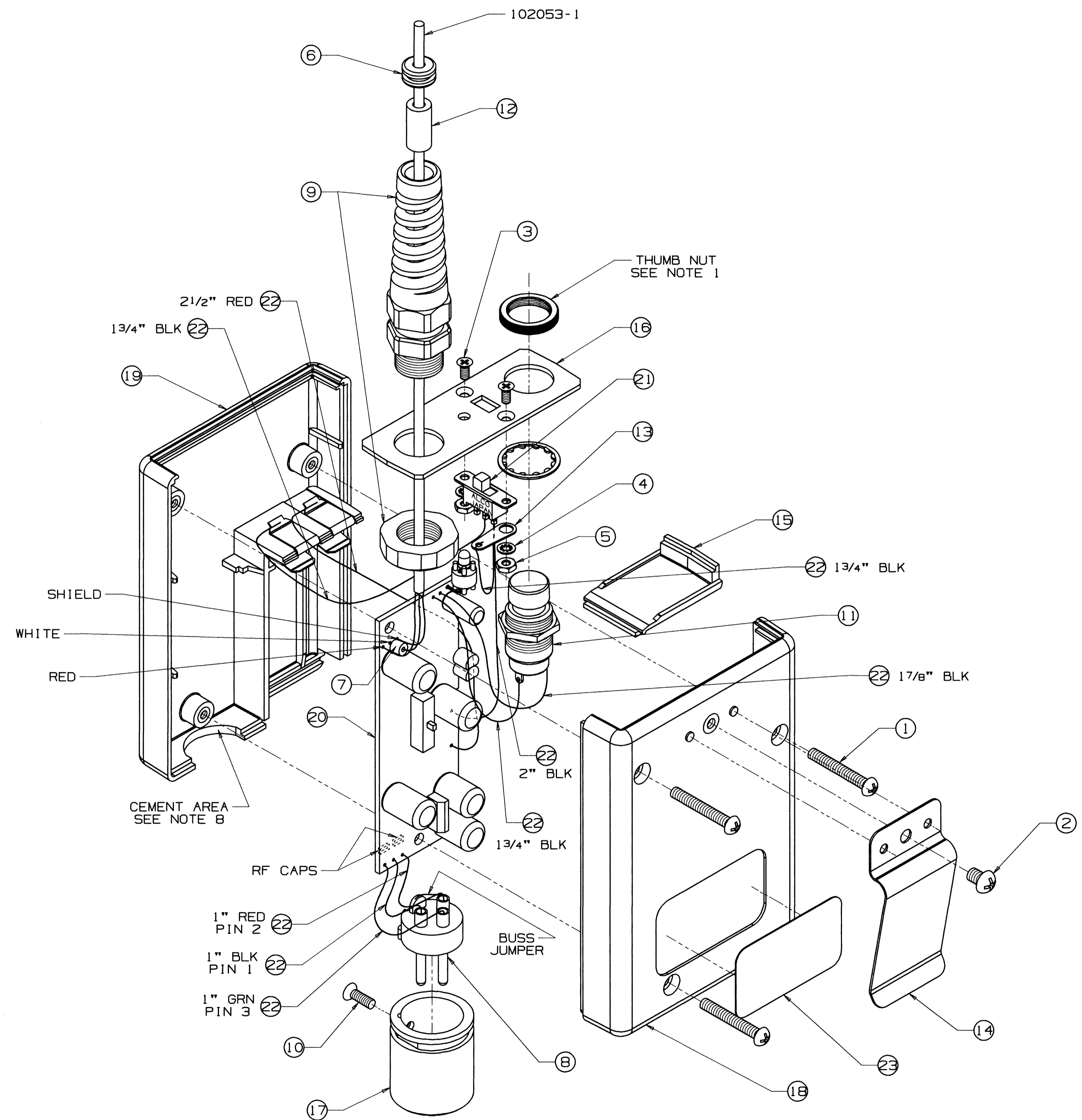
TOP VIEW SHOWING PLACEMENT OF SHRINK TUBING (ITEM 5).

QTY	REV	PART NO	DESCRIPTION	C.P.N.
X	(B)		BLACK MAX ADHESIVE	S 5767-9
1	(7)		PWA, CM311AE	127830-1
1	(6)		PIGTAIL, CM-311E	H43306-2
1	(5)		TUBING, CM-311E MODULE	H43295-7
1	(4)		LBL, CM-311AE MODEL	125112-1
2	(3)		HSG, DB130-3 CONDUCTIVE PT	D 8130J2
2	(2)		.1350D X .0471D X .12L FERRITE BEAD	C 6709-7
4	(1)		2-56 X .312 FLTHD PN HSCR ZINC	A10091-10205

3	2	1	ITEM	DESCRIPTION	C.P.N.
PRINTS TO					
H					
CROWN INTERNATIONAL, INC.					
1718 WEST MISHAWAKA ROAD ELKHART, IN 46517 PHONE (219) 294-8000					
CM-311AE HSG/MOD ASM					
DRAWN	JC	11-7-97	APPROVED BY:	DO NOT SCALE PRINT	
CHECKED	PJ	11-7-97	MECH ENGR	SUPERSEDES	
SCALE	2:1		MFG ENGR	E.C.	
PROJ#	MD357	PROJ ENGR	PJ	11-7-97	DWG. NO.
NEXT ASSEMBLY					125111

MIC	125111	1,2,252-256	REV (B)
-----	--------	-------------	---------

REVISIONS				APPROVALS				
E.C.N.	ZONE	REV	DESCRIPTION	DATE	DWN	CHK	CM	PE
		(A)	INITIAL RELEASED FOR PRODUCTION	8-29-97	JC	PJ		PJ
00N0118	B2 C, D3	(B)	ITEM 20 WAS C.P.N. 101331-1, ADDED ITEMS 25-27, REVISED NOTES 1 & 7	2-14-00	EDT	JG	KZ	PJ
00N1069		(C)	REMOVED ELECTRICAL TAPE (ITEM 27) & NOTE.	12-23-00	JC	DB	(P)	ES
		(D)						
		(E)						



- NOTES:
- (B) 1) ASSEMBLE ITEMS 9, 11, 13, & 21 TO TOP PLATE (ITEM 16) USING ITEMS 3, 4, & 5. TOP "THUMB" NUT THAT COMES WITH SWITCH (ITEM 11) SHOULD BE FLUSH WITH THE END OF THREADS ON SWITCH, SO THERE ARE NO EXPOSED THREADS. USE LOCTITE 425 (ITEM 25) ON THREADS OF BOTTOM NUT. ALSO USE A SMALL AMOUNT OF LOCTITE 414 (ITEM 26) ON NUT OF ITEM 9 TO SECURE TO ITEM 16.
 - 2) SOLDER WIRES (ITEM 22) TO ITEMS 11, 13, & 21 AS SHOWN.
 - 3) SOLDER WIRES (ITEM 22) TO CLIPS (ITEM 24) BEFORE MOUNTING ON ITEM 19. DO NOT SOLDER CLIPS WHEN THEY ARE MOUNTED ON ITEM 19 BECAUSE OF MELTING HOUSING (ITEM 19).
 - 4) SOLDER WIRES (ITEM 22) TO CONNECTOR (ITEM 8) & BUSS JUMPER BETWEEN PIN 1 & TAB ON CONNECTOR. INSERT ITEM 8 INTO ADAPTER (ITEM 17) & SECURE WITH SCREW. PRESS WIRES INTO ADAPTER HOUSING & HAVE THEM EXIT ON SIDE AS SHOWN.
 - 5) SOLDER WIRES OF ITEMS 11, 21, & 24 TO PWA (ITEM 20).
 - 6) SOLDER WIRES OF ITEM 8 TO PWA (ITEM 20).
 - (B) 8) PLACE TOP PLATE/PWA/ADAPTER ASM. IN HOUSING (ITEM 19) USING ONE DROP OF LOCTITE 414 IN AREA SHOWN ON ITEM 19 TO SECURE ADAPTER. MAKE SURE ADAPTER IS CENTERED & WIRES THAT GO FROM ADAPTER TO PWA ARE ROUTED IN A MANNER THAT WILL NOT INTERFERE WITH MOUNTING POSTS.
 - 9) ATTACH BATTERY CLIPS (ITEM 24) TO HOUSING (ITEM 19).
 - 10) ATTACH BELT CLIP (ITEM 14) TO HOUSING (ITEM 18) USING SCREW (ITEM 2).
 - 11) THREAD ITEMS 6 & 12 ONTO CABLE (102053-1). THREAD CABLE THROUGH ITEM 9 & SOLDER TO PWA (ITEM 20). USE SMALL FERRITE BEAD ON WHITE LEAD AS SHOWN.
 - 12) WHEN JOINING HOUSINGS, (ITEMS 18 & 19), MAKE SURE MOUNTING POSTS DO NOT INTERFERE WITH FERRITE BEAD/CABLE OR ANY OTHER WIRES.

ITEM	QTY	DESCRIPTION	PART NO.
(B) 26	X	LOCTITE 414 SUPER BONDER	S 5957-6
(B) 25	X	LOCTITE #42540 THREAD LOCK	S 6071-5
(B) 2	2	CLIP, AA BATTERY	C 6101-7
(B) 23	1	LBL, CM-311A BATTERY	102064-1
(B) 22	1	WIRE GROUP, CM-311A	102032-1
(B) 21	1	SPDT PNL, MT MINI SLIDE SW	101609-1
(B) 20	1	PWA, CM-311A #2	101331-2
(B) 19	1	FRONT HSG, BELT PACK HOT STAMP	102642-1
(B) 18	1	REAR HSG, BELT PACK CONDUCT CT	100842-1
(B) 17	1	XLR ADAPTER, BELT PACK	100666-1
(B) 16	1	TOP PLATE, BELT PACK	100664-1
(B) 15	1	BATTERY DOOR, BELT PACK	100663-1
(B) 14	1	BELT CLIP	D 8449-7
(B) 13	1	11B SLDR LUG HOLE	D 1220-9
(B) 12	1	BEAD, SHIELD 1/8 INCH DIAMETER	C10065-8
(B) 11	1	SWITCH, SPSP PUSHBUTTON MOM	C 9979-3
(B) 10	1	3-56 X .3125 FLTHD PH MSCR BLK	C 7291-5
(B) 9	1	MIC CONNECTOR FLEX RELIEF	C 7025-7
(B) 8	1	CONNECTOR INSERT NEUTRIK 3MC-1	C 6972-1
(B) 7	1	.1350DX.0471DX.12LFERRITE BEAD	C 6709-7
(B) 6	1	1/8 ID RUBBER GROMMET	A10224-1
(B) 5	2	NUT, HEX JAM #2-56 STEEL ZINC	A10102-30
(B) 4	2	#2 INT STAR LOCKWASHER	A10094-12
(B) 3	2	2-56 X .312 FLTHD PH HSCR ZINC	A10091-10205
(B) 2	1	6-32 X .25 RDHD PH MSCR Z	A10086-10604
(B) 1	3	4-40 X .812 RDHD PH MSCR Z	A10086-10413
(B) X		ASM, CM-311A BATTERY PACK	101327-1

DISTRIBUTION	DWN	JC	8-29-97	<p>1718 WEST MISHAWAKA RD. ELKHART, IN 46517 PHONE (219) 294-8000 WWW.CROWNINTL.COM</p>
H	CHK	PJ	9-9-97	
CROWN/MIC	CM			
101327.PRT	PE	PJ	9-9-97	TITLE
				ASM, CM-311A BATTERY PACK
				SIZE DWG NO.
				D 101327
				SCALE 1 1/2"=1" PROJ NO. M0357 SHEET 1 OF 1

UNCONTROLLED
UNLESS OTHERWISE MARKED IN RED INK BY CM AS A CONTROLLED COPY. COPIES OF THESE DOCUMENTS AND ASSOCIATED ELECTRONIC FILES ARE UNCONTROLLED AND ARE FOR REFERENCE ONLY.

TOLERANCE UNLESS OTHERWISE SPECIFIED
.00 = ±.020
.000 = ±.010
ANGLES = ±1.0°

DO NOT SCALE DRAWING

THESE DRAWINGS, SPECIFICATIONS AND ASSOCIATED ELECTRONIC FILES ARE THE PROPERTY OF CROWN INTERNATIONAL, INC. AND SHALL NOT BE REPRODUCED, COPIED, OR USED AS THE BASIS FOR THE MANUFACTURE OR SALE OF APPARATUS OR DEVICES WITHOUT PERMISSION.