
CATALOG

Carlon®

Electrical non-metallic tubing (ENT) system



**Thomas & Betts is now ABB
Installation Products, but our long
legacy of quality products and
innovation remains the same.
From connectors that wire
buildings on Earth to cable ties
that help put machines in space,
we continue to work every day to
make, market, design and sell
products that provide a smarter,
safer and more reliable flow of
electricity, from source to socket.**

Table of contents

004–005	Electrical non-metallic tubing
006–018	Boxes and accessories
019–028	Flexible raceway systems
029–032	Flexible raceway system accessories
033–034	Technical information
035–037	Index

ENT

Flex-Plus®



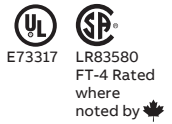
Flex-Plus ENT is a non-metallic flexible raceway for use in walls, floors and non-plenum ceilings. It's lightweight, hand-bendable and free from sharp edges, which reduces installation time and saves money.

Options:

- Sizes ½" through 2"
- Colors can designate different voltages.

Examples:

- Yellow color for communication circuits and signaling cable
- Red color for fire alarm circuits
- Blue color for power circuits
- Packaging: coils or reels



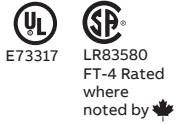
Standard stock – reels

Cat. No.	Size (in.)	Color	Nom. I.D. (in.)	Nom. O.D. (in.)	Pill Tape	Min. Bend Radius (in.)	Reel size (F x W) (in.)	Reel type (W=wood)	Reel Length	Reel wt. (lbs.)	Wt. Per 100 Ft. (lbs.)
12005AK-001	½	Blue	.56	.84	Empty	6	36 x 24	W	1500	40	10
1205AKY-001	½	Yellow	.56	.84	Empty	6	36 x 24	W	1500	40	10
1205AKR-001	½	Red	.56	.84	Empty	6	36 x 24	W	1500	40	10
🍁 12005AKC-001	½	Blue	.56	.84	Empty	6	36 x 24	W	1500	40	10
12007AA-001	¾	Blue	.76	1.05	Empty	6	36 x 24	W	1000	40	14
1207AAY-001	¾	Yellow	.76	1.05	Empty	6	36 x 24	W	1000	40	14
1207AAR-001	¾	Red	.76	1.05	Empty	6	36 x 24	W	1000	40	14
🍁 1207AAC-001	¾	Blue	.76	1.05	Empty	6	36 x 24	W	1000	40	14
12008-750	1	Blue	1.00	1.315	Empty	6	36 x 24	W	750	40	20
12008Y-750	1	Yellow	1.00	1.315	Empty	6	36 x 24	W	750	40	20
12008R-750	1	Red	1.00	1.315	Empty	6	36 x 24	W	750	40	20
🍁 12008C-750	1	Blue	1.00	1.315	Empty	6	36 x 24	W	750	40	20
12009-750	1¼	Blue	1.402	1.66	Empty	7	48 x 32	W	750	90	19
12010-750	1½	Blue	1.554	1.90	Empty	8¼	48 x 32	W	750	90	39
12010Y-750	1½	Yellow	1.554	1.90	Empty	8¼	48 x 32	W	750	90	39
12011-500	2	Blue	2.030	2.375	Empty	9½	48 x 32	W	500	90	32
12011R-500	2	Red	2.030	2.375	Empty	9½	48 x 32	W	500	90	32
12011Y-500	2	Yellow	2.030	2.375	Empty	9½	48 x 32	W	500	90	32

* 1¼"-2" available in yellow & red, made to order; consult factory.

🍁 Canada Only

Flex-Plus ENT



Standard stock – coils

Cat. No.	Size (in.)	Color	Nom. I.D. (in.)	Nom. O.D. (in.)	Pill Tape	Min. Bend Radius (in.)	Coil Length (Ft.)	Wt. Per 100 Ft. (lbs.)
12005-200	1/2	Blue	.56	.84	Empty	6	200	10
12005Y-200	1/2	Yellow	.56	.84	Empty	6	200	10
12005R-200	1/2	Red	.56	.84	Empty	6	200	10
12005C-370	1/2	Blue	.56	.84	Empty	6	200	10
12007-100	3/4	Blue	.76	1.05	Empty	6	100	14
12007Y-100	3/4	Yellow	.76	1.05	Empty	6	100	14
12007R-100	3/4	Red	.76	1.05	Empty	6	100	14
12007C-240	3/4	Blue	.76	1.05	Empty	6	100	14
12008-100	1	Blue	1.00	1.315	Empty	6	100	22
12008Y-100	1	Yellow	1.00	1.315	Empty	6	100	22
12008R-100	1	Red	1.00	1.315	Empty	6	100	22
12008C-160	1	Blue	1.00	1.315	Empty	6	100	22

Canada Only

10-ft. Lengths

Cat. No.	Size (in.)	Color	Nom. I.D. (in.)	Nom. O.D. (in.)	Std. Ctn.	Std. Wt. (lbs.)
12005-UPC	1/2	Blue	.56	.84	10 ft.	1.02
12007-UPC	3/4	Blue	.76	1.05	10 ft.	1.46
12008-010	1	Blue	1.00	1.315	10 ft.	2.96

Note: The solid blue color of ENT conduit is a registered trademark of Carlon. ENT may show color deterioration in direct sunlight when stored outdoors over an extended period of time. It is suggested that all ENT products not be stored outside. Section 362.12(8) of the NEC[®] prohibits ENT to be used in areas exposed to direct sunlight.


NEC and National Electrical Code are registered trademarks of the National Fire Protection Association, Inc.

Stub downs

Carlson vertical stub downs are designed to provide a quick, easy connection to a wood deck or transition from slab-to-slab using Carlson's "Quick Connect" snap-in design...simply snap the ENT in place. The integral snaps provide a secure mount – preventing the ENT from pulling out while enabling easy removal of the fitting once the deck is removed. All in a concrete-tight application. The underside of this fitting provides ample room to attach a Carlson coupling to the ENT to continue the run. Carlson vertical stub downs are manufactured out of a highly engineered thermoplastic material to provide extra strength and durability and are available in sizes ½", ¾" and 1".


Carlson 45° stub downs are designed to provide a smooth transition from cross-deck ENT runs to vertical applications. The integral snaps provide a secure mount – preventing the ENT from slipping or pulling out – but also enable the stub to easily be removed. The underside of this fitting provides ample room to attach a Carlson coupling to the ENT to continue the run. Carlson 45° stub downs are manufactured out of a highly engineered thermoplastic material to provide extra strength and durability. They're concrete tight and available in sizes ½", ¾" and 1".

Vertical stub down



	Cat. No.	Size	Std. Ctn.	Std. Wt. (lbs.)
	A210D	½"	50	3.8
	A210E	¾"	50	3.7
	A210F	1"	50	4.8

45° stub down




	Cat. No.	Size	Std. Ctn.	Std. Wt. (lbs.)
	A220D	½"	25	1.8
	A220E	¾"	25	2.0
	A220F	1"	25	2.6
	A220G	1¼"	25	2.8
	A220H	1½"	25	3.3
	A220J	2"	25	4.1

Carlson non-metallic **exclusive**...Carlson vertical stub down transition adapters, like our vertical stub downs, provide a means to transition from ENT to another wire-management product where code requires other wire-management means. The integral snaps provide a secure mount – preventing the ENT from slipping or pulling out, while the deck-mount flange has a threaded port, enabling connection to other conduit system using a terminal adapter. Carlson vertical stub down transition adapters are manufactured out of polycarbonate material to provide extra strength and durability. They're concrete tight and available in sizes ½", ¾" and 1".


Carlson non-metallic **exclusive**...Carlson 90° stub downs are designed to provide a smooth transition from cross-deck ENT runs to vertical applications where code requires other wire-management means. The integral snaps provide a secure mount – preventing the ENT from slipping or pulling out, while the deck-mount flange has a threaded port, enabling connection to any conduit system using a terminal adapter. Carlson 90° stub downs are manufactured out of polycarbonate material to provide extra strength and durability. They're concrete tight and available in sizes ½", ¾" and 1".

Vertical stub down transition adapter

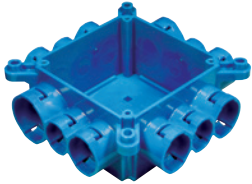
	Cat. No.	Size	Std. Ctn.	Std. Wt. (lbs.)
	A200D	½" Female ENT to NPSC (Female)	50	2.3
	A200E	¾" Female ENT to NPSC (Female)	50	2.8
	A200F	1" Female ENT to NPSC (Female)	50	3.9

90° stub down transition adapter

	Cat. No.	Size	Std. Ctn.	Std. Wt. (lbs.)
	A220D	½" Female ENT to NPSC (Female)	25	2.0
	A220E	¾" Female ENT to NPSC (Female)	25	2.4
	A220F	1" Female ENT to NPSC (Female)	25	3.3

Mud box assemblies



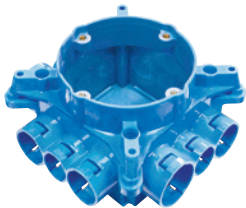
Mud box base with blank cover



E11461

Cat. No.	Size	Std. Ctn.	Std. Wt. (lbs.)
A863BC	Mud box with blank cover	24	12.3

Carlson mud box assemblies are available in five unique styles...blank, ceiling ring, one-gang, two-gang and 4-inch square. All mud box assemblies are manufactured out of polycarbonate material to provide extra strength and durability, are concrete tight and have twelve integral connectors...two 1", six ¾" and four ½". Using our new ENT reducers, this product will meet ANY jobsite application.



Mud box base with ceiling ring

Features and benefits:

- Threaded brass inserts for fan (#10-32 screws) and fixture (#8-32 screws) mountings
- Listed for fixture support up to 50 lbs.
- Listed for ceiling fans up to 35 lbs.



E11461



Except where noted by ►

Cat. No.	Size	Std. Ctn.	Std. Wt. (lbs.)
A863CF	Mud box with blank cover	24	15.5
► A863CFG	Mud box with ceiling ring & ground lug	24	16.1



Mud box with one-gang ring



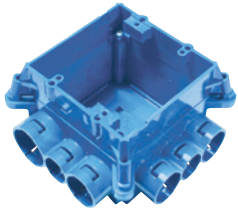
E11461



Except where noted by ►

Cat. No.	Size	Std. Ctn.	Std. Wt. (lbs.)
A863S	Mud box with one-gang ring	24	16.8
► A863SG	Mud box with one-gang ring & ground lug	24	16.2

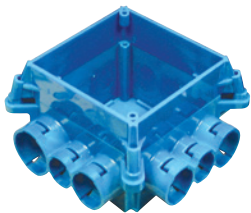
Mud box assemblies



Mud box with two-gang ring



Cat. No.	Size	Std. Ctn.	Std. Wt. (lbs.)
A863D	Mud box with two-gang ring	24	15.8
▶ A863DG	Mud box with two-gang ring & ground lug	24	16.6



Mud box with 4" square ring



Cat. No.	Size	Std. Ctn.	Std. Wt. (lbs.)
A863-4SQ	Mud box with 4-inch square ring	24	15.2

Features and benefits:

- Threaded brass inserts for fan (#10-32 screws) and fixture (#8-32 screws) mountings
- Listed for fixture support up to 50 lbs.
- Listed for ceiling fans up to 35 lbs.



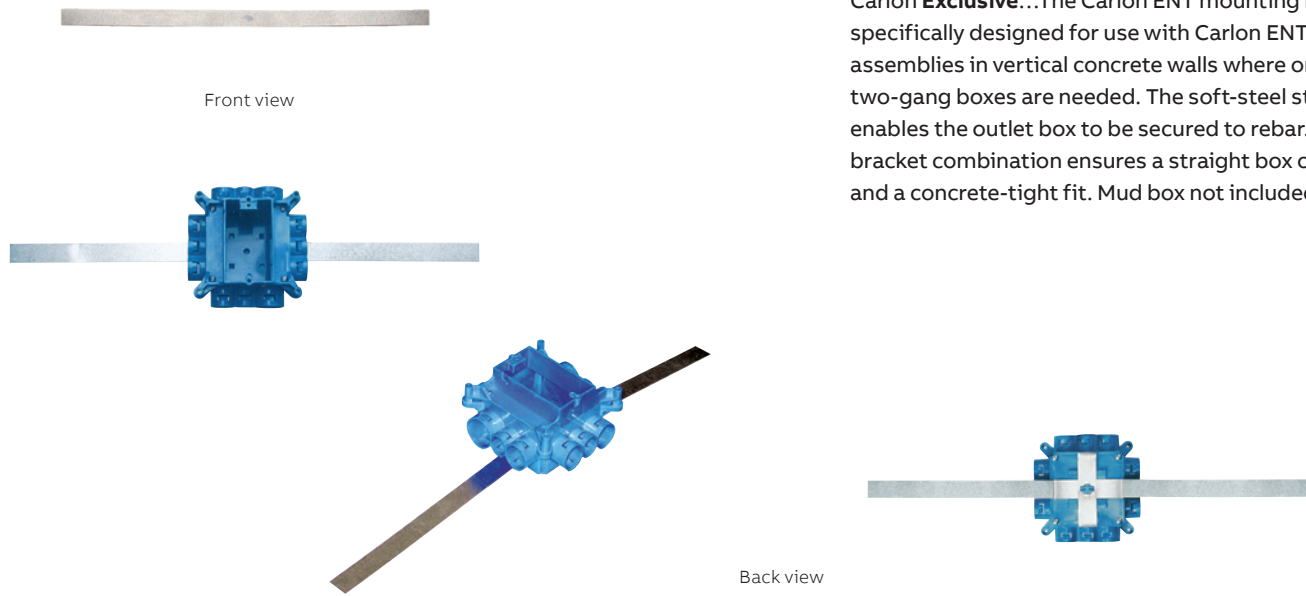
Mud box with one-gang ring



Cat. No.	Size	Std. Ctn.	Std. Wt. (lbs.)
A863-4SQF	4-square ring	24	17.15
A863CFF	Ceiling ring	24	16.61
A863CFGF	Ceiling ring and ground lug	24	17.46
A863DF	Double-gang	24	17.42
A863DGF	Double-gang and ground lug	24	17.99
A863SF	Single-gang	24	17.15
A863SGF	Single-gang and ground lug	24	17.44

Carlson Mud box assemblies with mounting feet are specifically engineered and designed for use in tunnel form applications. The mounting feet are located on all four corners and enable the box to attach directly to the wall of the form using pop rivets. The pop rivets help keep the box in position during the pour and provide a safe, secure and rust-resistant mount.

Mounting brackets

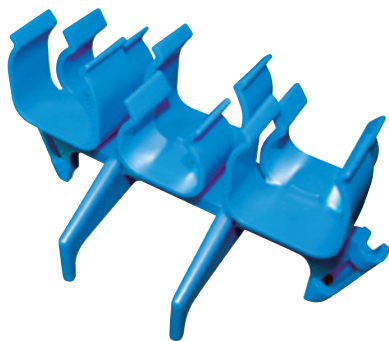


Carlon **Exclusive**...The Carlon ENT mounting bracket is specifically designed for use with Carlon ENT mud box assemblies in vertical concrete walls where one- or two-gang boxes are needed. The soft-steel strap enables the outlet box to be secured to rebar. The bracket combination ensures a straight box opening and a concrete-tight fit. Mud box not included.

Mud box base with blank cover

Cat. No.	Size	Std. Ctn.	Std. Wt. (lbs.)
A863MB	Mud box mounting kit	1	.98

ENT Bridge



Carlon **Exclusive**...The Carlon ENT Bridge is designed to support long ENT runs in concrete pour applications. This makes pulling wire/cable a snap. Installation is easy...simply mount the ENT bridge, using nails or screws, to the wood deck mounting and snap the ENT into place. The bridge is designed to hold the conduit in place while minimizing dips in the conduit over long runs. The Carlon ENT Bridge is manufactured out of a highly engineered thermoplastic material to provide extra strength and durability and can accommodate ENT sizes $\frac{1}{2}$ ", $\frac{3}{4}$ " and 1". (The Carlon ENT bridge can be used with rigid non-metallic conduit too.)

Mud box base with blank cover

Cat. No.	Size	Std. Ctn.	Std. Wt. (lbs.)
A293DEF	ENT Bridge	50	9.0

Transition adapters



Male ENT to Schedule 40 and 80 PVC conduit



Cat. No.	Size	Std. Ctn.	Std. Wt. (lbs.)
A263D	½" ENT to ½" Sch. 40 or Sch. 80	100	2.4
A263E	¾" ENT to ¾" Sch. 40 or Sch. 80	100	3.2
A263F	1" ENT to 1" Sch. 40 or Sch. 80	100	4.5



ENT to EMT



Cat. No.	Size	Std. Ctn.	Std. Wt. (lbs.)
A245D	½" ENT to ½" EMT	100	3.4
A245E	¾" ENT to ¾" EMT	100	4.1
A245F	1" ENT to 1" EMT	100	5.4



ENT to EMT



Cat. No.	Size	Std. Ctn.	Std. Wt. (lbs.)
A273DE	¾"-½"	100	3.2
A273EF	1"-¾"	100	2.4

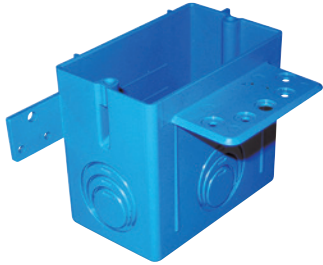
Carlton **Exclusive**...Carlton male ENT to Schedule 40 & 80 PVC conduit transition adapters are designed to connect Schedule 40 conduit to Carlon Flex-Plus Blue™ ENT boxes and fittings. Simply solvent cement the PVC adapter to the Schedule 40 conduit and snap the adapter into Carlon's "Quick Connect" snap-in connector on the box or fitting. Carlton Male ENT to Schedule 40 & 80 adapters are concrete tight and available in sizes ½", ¾" and 1".

Carlton ENT to EMT transition adapters are designed to easily transition from Carlon Flex-Plus Blue™ ENT to EMT using Carlon's "Quick Connect" snap-in design. The EMT is held securely in place using the small screw (provided). This helps prevent the EMT from slipping/shifting out of the adapter. All ENT to EMT adapters are manufactured out of polycarbonate material to provide extra strength and durability. They're concrete tight and available in sizes ½", ¾" and 1".

Carlton **Exclusive**...Carlton ENT reducers are designed to provide an easy transition from 1" Carlon ENT to ¾" ENT or from ¾" Carlon ENT to ½" ENT. They're concrete tight and manufactured out of polycarbonate material to provide extra strength and durability. Carlton ENT reducers provide flexibility while on the jobsite by minimizing the need to carry size-specific boxes and fittings. Carlton ENT reducers provide the versatility to convert Carlton fittings and boxes to many different sizes and configurations.

Outlet and switch boxes

Eccentric knockouts



A122



A238

Carlon **Exclusive**...Carlon ENT outlet and switch boxes with eccentric knockouts are designed to enable selective ENT openings – ½", ¾" and 1" – based on application needs. They provide the largest capacity available on the market today – 22 cu. in. Single-gang, and 38 cu. in. Double-gang – and can be mounted to wood or steel studs. Carlon ENT outlet and switch boxes with eccentric knockouts are manufactured out of a highly engineered thermoplastic material to provide extra strength and durability and are available in single-gang and double-gang styles.

Note: The double-gang version is also a 4-in. square box.

—
Single-gang — 22 cu. in.



E11461

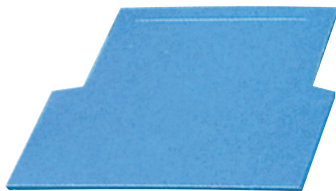
Cat. No.	Size	Capacity (cu. in.)	Std. Ctn.	Std. Wt. (lbs.)
A122	Single-gang	22	25	6.8

—
Single-gang — 22 cu. in.

Cat. No.	Size	Capacity (cu. in.)	Std. Ctn.	Std. Wt. (lbs.)
A238	Two-gang	38	25	8.9

Outlet box

Divider



Carlon ENT outlet box divider is specifically designed for applications where a combined high- and low-voltage closed-back box is needed, such as for placement in a fire-rated wall. Just slip the divider into place to get the split box you need. The Carlon ENT outlet box divider is UL® Recognized for use with the Carlon A238 Box only.

—
Outlet box divider



Cat. No.	Size	Std. Ctn.	Std. Wt. (lbs.)
A238DIV	—	50	1.87

Quick-Connect

Adapters and couplings



Coupling



Threaded adapter



Snap-in adapter

Features and benefits:

- Carlon one-piece ENT Quick-Connect couplings, threaded adapters and snap-in terminator adapters are suitable for damp locations
- Quick-Connect couplings and threaded adapters are concrete-tight when used with Carlon ENT
- All sizes of rigid non-metallic conduit fittings are compatible with ENT when using ENT cement
- Rigid non-metallic conduit fittings are recommended for use with Carlon 1¹/₄"–2" Flex-Plus Blue™ ENT
- Use of ENT Blue™ Quick-set cement is required. See page 18 for details
- When one-piece Quick-Connect snap-in terminator adapters are installed in a concrete application, Carlon flat sealing washers must be used on the box connection ends

Couplings

Cat. No.	Size (in.)	Std.Ctn.	Std. Wt. (lbs.)
A240D	1/2	150	2.90
A240E	3/4	100	3.00
A240F	1	50	2.30

Threaded adapters

Cat. No.	Size (in.)	Std.Ctn.	Std. Wt. (lbs.)
A243D	1/2	150	2.55
A243E	3/4	100	2.30
A243F	1	50	2.00

Snap-in adapters



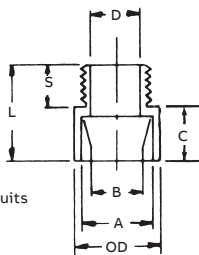
Cat. No.	Size (in.)	Std.Ctn.	Std. Wt. (lbs.)
A253D	1/2	150	2.70
A253E	3/4	100	2.90
A253F	1	50	2.30

Rigid non-metallic

Conduit adapters and couplings



For adapting non-metallic conduits to boxes, threaded fittings, metallic systems. Male threads on one end, socket end on other.



Male terminal adapters

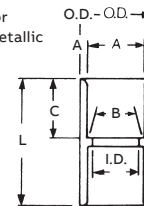
Cat. No.	Size	Std. Ctn.	Typical		Min. D	Max. OD	C	S	L	Std. Wt. (lbs.)
			A	B						
E943D	1/2	150	.852	.836	.597	1 1/8	5/8	9/16	1 5/16	2.8
E943E	3/4	125	1.064	1.046	.800	1 1/32	3/4	9/16	1 3/8	3.5
E943F	1	50	1.330	1.310	1.018	1 5/8	1	1 1/16	1 25/32	3
E943G	1 1/4	50	1.677	1.655	1.332	2 1/32	1	3/4	1 15/16	4
E943H	1 1/2	25	1.918	1.894	1.566	2 5/32	1 3/16	3/4	2 1/16	2.5
E943J	2	50	2.393	2.369	2.000	2 21/32	1 3/16	3/4	2 1/8	7

*All measurements in inches, unless otherwise noted.

All socket fittings should be attached using ENT Blue Quick-Set Cement (page 18). Using Carlon fittings with Carlon non-metallic conduit ensures system integrity.



Socket type for joining non-metallic conduit.



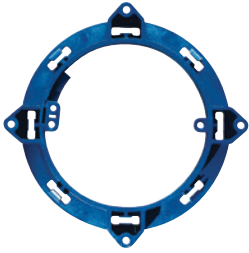
Standard couplings

Cat. No.	Size	Std. Ctn.	Typical		Min. D	Max. OD	C	L	Std. Wt. (lbs.)
			A	B					
E940D	1/2	150	.852	.836	.728	1 7/64	1 1/16	1 1/2	2.8
E940E	3/4	100	1.064	1.046	.840	1 5/16	3/4	1 5/8	3.5
E940F	1	50	1.330	1.310	1.210	1 5/8	1 5/16	2	3
E940G	1 1/4	30	1.677	1.655	1.535	1 63/64	1	2 1/8	4
E940H	1 1/2	25	1.918	1.894	1.755	2 15/64	1 1/8	2 3/8	2.5
E940J	2	30	2.393	2.369	2.190	2 47/64	1 3/16	2 1/2	7

*All measurements in inches, unless otherwise noted.

2½" and 4"

Mud boxes and covers



Base rings

Features and benefits:

- UL Classified for 2-hour-or-less fire-resistant floor/ceiling assemblies
- Listed for use with ceiling fans up to 35 lbs. and for fixture support up to 50 lbs.



Cat. No.	Size	Std. Ctn.	Std. Wt. (lbs.)
A861	Without ground lug	10	2.5
C861G	With ground lug	10	2.0



Covers

Cat. No.	Size	Std. Ctn.	Std. Wt. (lbs.)
A862D	2½ deep (½" KOs)	10	2.5
A862E	2½ deep (¾" KOs)	10	2.1
A864D	4 deep (½" KOs)	10	2.9
A864E	4 deep (¾" KOs)	10	2.9
A864F	4 deep (1" KOs)	10	3.0

Quick-Connect

Outlet and switch boxes



Single-gang – 16 cu. in.

Features and benefits:

- Suitable for masonry walls
- Meets NEMA OS-2
- UL Classified for 2-hour-or-less fire-resistant wall assemblies



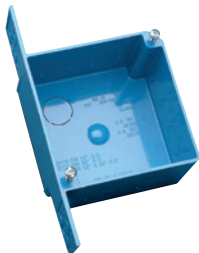
E11461

Cat. No.	Size	Std. Ctn.	Std. Wt. (lbs.)
A58381D	3 x 2 ¹ / ₄ x 3 (1/2" KOs)	25	4.6
A58381E	3 x 2 ¹ / ₄ x 3 (3/4" KOs)	25	4.6



4" Square – 20 cu. in.

Cat. No.	Size	Std. Ctn.	Std. Wt. (lbs.)
A52151D	4 x 4 x 1 ¹ / ₂ (1/2" KOs)	100	22.6
A52151E	4 x 4 x 1 ¹ / ₂ (3/4" KOs)	100	22.6
A521DE	4 x 4 x 1 ¹ / ₂ (1/2" & 3/4" KOs)	100	22.6



4" Square – 30.3 cu. in.

Cat. No.	Size	Std. Ctn.	Std. Wt. (lbs.)
A52171D	4 x 4 x 2 ³ / ₈ (1/2" KOs)	25	7.6
A52171E	4 x 4 x 2 ³ / ₈ (3/4" KOs)	25	7.6
A5217DE	4 x 4 x 2 ³ / ₈ (1/2" & 3/4" KOs)	25	7.6

ENT Box

With adapters



4" Square – 24.75 cu. in. ENT box with adapters

Features and benefits:

- UL Classified for 2-hour-or-less fire-resistant wall assemblies



E11461

Cat. No.	Size	Std. Ctn.	Std. Wt. (lbs.)
A5329DE	4 x 4 x 1 ³ / ₄ (1/2" & 3/4" KOs)	50	14.8



Box back wall support

Cat. No.	Size	Std. Ctn.	Std. Wt. (lbs.)
A540DS	For use with 1/2" knockout	100	2.1

ENT Box

Extenders



Features and benefits:

- UL Classified for 2-hour-or-less fire-resistant wall assemblies



E11461

Single-gang

Cat. No.	Rise (in.)	Cu. In.	Std. Ctn.	Std. Wt. (lbs.)
A410	1/2	3.5	100	7.7
A411	5/8	4.2	50	4.6
A412	3/4	5.0	50	5.1
A413	1	6.6	40	5
A414	1 1/4	8.1	30	4.4

Two-gang

Cat. No.	Rise (in.)	Cu. In.	Std. Ctn.	Std. Wt. (lbs.)
A400	Blank	—	—	7.7
A420	1/2	6.1	6.1	5.0
A421	5/8	7.4	7.4	4.2
A422	3/4	8.8	8.8	4.8

Round covers

For octagon ceiling boxes



Features and benefits:

- Listed for fixture support up to 50 lbs.
- UL Classified for 2-hour-or-less fire-resistant assemblies

Round plaster rings



E11461

Cat. No.	Rise (in.)	Cu. In.	Std. Ctn.	Std. Wt. (lbs.)
A471	1/2	3.2	100	3.3
A472	3/4	4.0	100	3.7



Round blank covers

Cat. No.	Rise (in.)	Cu. In.	Std. Ctn.	Std. Wt. (lbs.)
E460R-CAR	Blank	-	35	2.2
A470D	Blank with 1/2" KO	-	100	4.7

Quick Connect 4"

Octagon ceiling boxes



Ceiling box – 20.5 cu. in.



E11461

Cat. No.	Size	Std. Ctn.	Std. Wt. (lbs.)
A615D	(4) 2 1/8" deep (1/2" KOs)	50	6.4
A615E	(4) 2 1/8" deep (3/4" KOs)	50	6.4
A615DE	(4) 2 1/8" deep (1/2" & 3/4" KOs)	50	6.4



Ceiling box with J mount – 20.5 cu. in.



E11461

Cat. No.	Size	Std. Ctn.	Std. Wt. (lbs.)
A615DJ	(4) 2 1/8" deep (1/2" KOs)	50	18.7



Ceiling box with L bracket – 20.5 cu. in.



E11461

Cat. No.	Size	Std. Ctn.	Std. Wt. (lbs.)
A615DL	(4) 2 1/8" deep (1/2" KOs)	50	6.4



Ceiling box with adjustable hanger bar – 20.5 cu. in.



E11461

Cat. No.	Size	Std. Ctn.	Std. Wt. (lbs.)
A615DH	(4) 2 1/8" deep (1/2" KOs)	25	13.6

Features and benefits:

- Carlon ceiling boxes and round plaster rings are produced from a special high heat-resistant engineered plastic material developed specifically for fixture support
- Listed for fixture support up to 50 lbs.
- UL Classified for 2-hour-or-less fire resistant floor/ceiling assemblies

PVC Conduit cutters

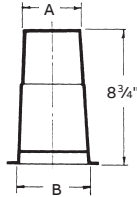


For fast, smooth field cuts of ½" through 1" Flex-Plus® Blue™ ENT.

Ceiling box – 20.5 cu. in.

Cat. No.	Size (in.)	Std. Ctn.
CC120B	8	10

Concrete sleeves



Ceiling box – 20.5 cu. in.

Cat. No.	Min. O.D. A (in.)	B (in.)	Std. Ctn.	Std. Wt. (lbs.)
E92CSH	1½	1¾	20	3
E92CSJ	2	2 ¹³ / ₃₂	25	6
E92CSL	3	3 ¹³ / ₃₂	25	8
E92CSN	4	4 ¹³ / ₃₂	18	8
E92CSP	5	5 ¹³ / ₃₂	15	8
E92CSR	6	6 ¹³ / ₃₂	12	8

Carlson Low

VOC Cement

(MSDS sheets available at www.carlon.com)

All Weather — ENT Blue



Recommended pipe application and sizes

Set-up time (Evaporation Rate)

Recommended installation temp.

Lap Shear @ 73°F

Viscosity at 75°F as manufactured

Required for use with Flex-Plus® ENT (Electrical non-metallic tubing), Riser-Gard®, P&C Flex™ and Carlson PVC fittings. Up through 6" diameter.

-5°–10°F	6–8 Minutes	-5° to 100°F	2 Hrs.	350 PSI	400–700 CPS
10°–30°F	4–5 Minutes		16 Hrs.	800 PSI	
30°–50°F	3–4 Minutes		72 Hrs.	1500 PSI	
50°–70°F	1–2 Minutes				
70°–90°F	½–1½ Minutes				

ENT cement required for use with ENT and rigid non-metallic conduit fittings.

Cat. No.	Size	Applicator	Description	Std. Ctn.	Std. Wt. (lbs.)
VC9992	Quart	Dauber	All-weather "Quick-Set" blue	12	29.0

Meets ASTM D-2564.

Tape



Prelubricated, woven polyester tape made from low-friction, high abrasion-resistant yarns, providing a low coefficient of friction. Tape is printed with sequential footage markings for accurate measurements.

Tape

Cat. No.	Size (in.)	Tensile strength (lbs.)	Teel lengths (ft.)
TL14505	½	1250	5000
TL14510	½	1250	10000
TL38203	5/8	1800	3000
TL38265	5/8	1800	6500
TL38210	5/8	1800	10000

Other tapes are available. Consult your sales service location for additional information.

Non-metallic concrete sleeve forms are the easy way to form holes in concrete. They install in seconds with nails, screws or staples and are easily removed. Concrete will not adhere to them. Concrete sleeves are adjustable to any slab thickness.

Carlon® Plenum-Gard® Raceway

01 Applications: Plenum, riser and general purpose

Plenum-Gard is a UL® Listed non-metallic corrugated flexible conduit for use in plenum, riser and general purpose applications. Plenum-Gard is manufactured from PVDF resin, which is extremely durable and resistant to abrasion and mechanical damage before/after cable installation.

Plenum-Gard is listed to UL® 2024 in accordance with the National Electrical Code for plenum, riser, general purpose and other cabling/optical fiber, telecommunication applications as defined in Articles 725, 770, 800 and 820.

Important: Installed cables must be plenum rated and the UL® Listing must be printed on the product. Abandoned cables MUST be removed (reference NEC®).

- Storage: -4° to 158°F
- Handling: -4° to 104°F
- No UV protection (not suitable for outdoor use)
- Do not store outside



Technical Info

Cat. No.	Size (in.)
Maximum flame propagation	5 ft.
Max. peak optical smoke density	0.5
Max. average optical smoke density	0.15

NEC and National Electrical Code are registered trademarks of the National Fire Protection Association, Inc.



Standard stock – reels

Cat. No.	Size (in.)	Color	Pull Tape	Reel Size (F x W) (in.)	Reel type	Reel Length (ft.)	Reel Wt. (lbs.)	Reel Wt. Per 100 Ft. (lbs.)
CD4X1C-1500	1/2	Orange	200 lb.	34 x 23	Wood	1,500	30	7
CE4X1-1000		Orange	Empty	34 x 23	Wood	1,000	30	8
CE4X1-1000S	3/4	Orange	Empty/split	34 x 23	Wood	1,000	30	8
CE4X1C-1000		Orange	900 lb.	34 x 23	Wood	1,000	30	8
CF4X1C-500		Orange	900 lb.	34 x 23	Wood	500	30	10
CF4X1C-1000		Orange	900 lb.	48 x 28	Wood	1,000	79	10
CF4X1C-1500	1	Orange	900 lb.	48 x 28	Wood	1,500	79	10
CF4X1C-5200		Orange	900 lb.	66 x 41	Wood	5,200	250	10
CF4X1C-6500		Orange	900 lb.	72 x 41	Wood	6,500	310	10
CF4X1C-8000		Orange	900 lb.	82 x 41	Wood	8,000	365	10
CG4X1C-500		Orange	900 lb.	48 x 28	Wood	500	79	14
CG4X1-500S		Orange	Empty/split	48 x 28	Wood	500	79	10
CG4X1C-900		Orange	900 lb.	48 x 45	Wood	900	96	14
CG4X1C-1600	1 1/4	Orange	900 lb.	48 x 45	Wood	1,600	96	14
CG4X1C-3200		Orange	900 lb.	66 x 41	Wood	3,200	250	14
CG4X1C-6500		Orange	900 lb.	96 x 41	Wood	6,500	700	14
CG4X1-900S		Orange	Empty/split	48 x 28	Wood	900	79	14
CH4X1C-350		Orange	900 lb.	48 x 28	Wood	350	79	16
CH4X1C-1200	1 1/2	Orange	900 lb.	48 x 45	Wood	1,200	96	16
CH4X1C-4000		Orange	900 lb.	82 x 41	Wood	4,000	365	16
CJ4X1-200S		Orange	Empty/split	48 x 28	Wood	200	79	21
CJ4X1C-225		Orange	900 lb.	48 x 28	Wood	225	79	21
CJ4X1C-700	2	Orange	900 lb.	48 x 45	Wood	700	96	21
CJ4X1C-1400		Orange	900 lb.	82 x 41	Wood	1,400	365	21
CJ4X1C-2000		Orange	900 lb.	82 x 41	Wood	2,000	365	21
CJ4X1C-2800		Orange	900 lb.	82 x 41	Wood	2,800	365	21
CL4X1C-150	3	Orange	900 lb.	48 x 45	Wood	150	96	41

Carlton

Plenum-Gard Raceway

Features and benefits:

- For use in plenum areas per NEC® Articles 725, 770, 800 and 820
- Sizes ½” through 3”
- Pre-installed pull tape available in sizes ½” through 3”
- Outside diameters meet IPS dimensions
- UL® Listed raceway meeting UL 2024
- Footage sequentially marked
- Single-peak design

Standard stock – coils

Cat. No.	Size (in.)	Color	Pull Tape	Coil Length (ft.)	Product Wt. per 100 ft.(lbs.)
CD4X1C-500	½	Orange	900 lb.	500	7
CE4X1-350*	¾	Orange	Empty	350	8
CE4X1-350S		Orange	Empty/split	350	8
CF4X1C-100*		Orange	900 lb.	100	10
CF4X1-100S*		Orange	Empty/split	100	10
CF4X1C-250*	1	Orange	900 lb.	250	10
CF4X1-250		Orange	Empty	250	10
CF4X1-250S*		Orange	Empty/split	250	10
CG4X1C-200*	1¼	Orange	900 lb.	200	14
CG4X1-200S		Orange	Empty/split	200	14
CH4X1C-150*	1½	Orange	900 lb.	150	16
CH4X1-150S		Orange	Empty/split	150	16
CJ4X1C-100*	2	Orange	900 lb.	100	21
CJ4X1-100S		Orange	Empty/split	100	21

* Overnight Shippable

Specifications

Size (in.)	I.D. Min. Ref. (in.)	Min. O.D. (in.)	Max. O.D. (in.)	Min. Bend Radius (in.)
½	.60	.815	.835	2
¾	.74	1.025	1.045	2
1	1.00	1.292	1.312	3
1¼	1.35	1.630	1.650	3
1½	1.50	1.868	1.888	4
2	2.00	2.329	2.439	4
3	3.00	3.422	3.452	4

- Custom orders are not returnable
- Custom lengths are available in minimum order quantities of 1,000 ft.
- Custom color runs are available in minimum order quantities of 10,000 ft.

Options:

- Color: black, blue, gray, red, white and yellow
- Two-, three- or four-way parallel
- Split duct
- Custom print line

Custom orders – how to build a part number:

Position 1 Product	Position 2 Size (in.)	Position 3 Type	Position 4 Wall	Position 5 Color	Position 6 Pull Line	Position 7 Length
C = Plenum-Gard	D = ½	4 = Corrugated	X = Standard	1 = Orange	C = 900 LB. Tape	Example
	E = ¾			2 = Black		-1000 = Feet
	F = 1			3 = Gray		-1000S = 1000 Feet split
	G = 1¼			4 = White		
	H = 1½			5 = Blue		
	J = 2			7 = Yellow		
	L = 3			8 = Red		

Carlton® Riser-Gard® Raceway

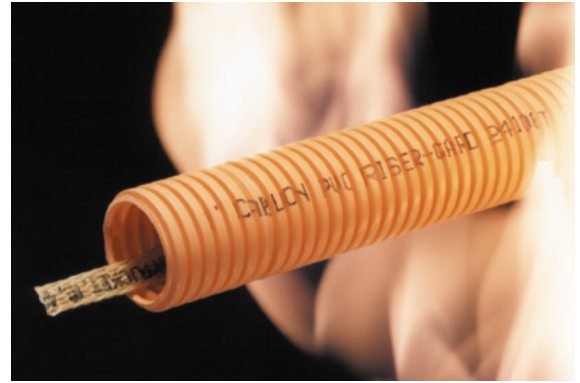
01 Applications: Riser and general purpose

Riser-Gard is a non-metallic flexible raceway for use in riser and general purpose applications. Riser-Gard is UL® Listed and is available with tape pre-installed. Riser-Gard is listed to UL® 2024 Standard for riser applications or optical fiber/communications raceways.

Riser-Gard is listed to UL® 2024 in accordance with the National Electrical Code® per Articles 725, 770, 800 and 820 for riser, general purpose and other cabling/optical fiber/telecommunication applications. Riser-Gard is suitable for use in vertical runs in a shaft or between floors, as well as areas other than the plenum.

Important: Installed cables must be of suitable rating for the application.

- Storage: -4° to 158°F
- Handling: -4° to 104°F
- No UV protection (not suitable for outdoor use)
- Do not store outside



Technical Info

UL listed to 2024	Test method	Size (in.)
Maximum Flame Propagation	UL 2024	6.0 ft.
Maximum Air Temperature at 12 ft	UL 2024	0.15

NEC and National Electrical Code are registered trademarks of the National Fire Protection Association, Inc.



Standard stock – reels

Cat. No.	Size (in.)	Color	Pull Tape	Reel Size (F x W) (in.)	Reel type	Reel Length (ft.)	Reel Wt. (lbs.)	Reel Wt. Per 100 Ft. (lbs.)
DE4X1-1000	¾	Orange	Empty	34 x 23	Wood	1,000	30	12
DF4X1C-500R		Orange	900 lb.	43 x 23	Wood	500	56	15
DF4X1C-1000		Orange	900 lb.	48 x 28	Wood	1,000	79	15
DF4X1C-1500		Orange	900 lb.	48 x 28	Wood	1,500	79	15
DF4X1C-2700	1	Orange	900 lb.	48 x 45	Wood	2,700	96	15
DF4X1C-5200		Orange	900 lb.	66 x 41	Wood	5,200	250	15
DF4X1C-6500		Orange	900 lb.	72 x 41	Wood	6,500	310	15
DF4X1C-7000		Orange	900 lb.	72 x 45	Steel	7,000	148	15
DF4X1C-9400		Orange	900 lb.	84 x 45	Steel	9,400	199	15
DG4X1C-900		Orange	900 lb.	48 x 28	Wood	900	79	17
DG4X1C-500R		Orange	900 lb.	48 x 23	Wood	500	56	17
DG4X1C-1500		Orange	900 lb.	48 x 45	Wood	1,500	96	17
DG4X1C-1600	1¼	Orange	900 lb.	48 x 45	Wood	1,600	96	17
DG4X1C-3200		Orange	900 lb.	66 x 41	Wood	3,200	250	17
DG4X1C-4500		Orange	900 lb.	72 x 45	Steel	4,500	148	17
DG4X1C-5600		Orange	900 lb.	82 x 41	Wood	5,600	365	17
DG4X1C-6500		Orange	900 lb.	96 x 41	Steel	6,500	700	17
DH4X1C-1200		Orange	900 lb.	48 x 45	Wood	1,200	96	22
DH4X1C-4000	1½	Orange	900 lb.	82 x 45	Steel	400	193	22
DH4X1C-4500		Orange	900 lb.	84 x 45	Steel	4,500	199	22
DJ4X1C-700		Orange	900 lb.	48 x 45	Wood	700	96	27
DJ4X1C-2000	2	Orange	900 lb.	82 x 41	Wood	200	265	27
DJ4X1C-2800		Orange	900 lb.	84 x 45	Steel	2,800	199	27
DL4X1C-750	3	Orange	900 lb.	72 x 41	Wood	750	310	27

Carlton

Riser-Gard Raceway

Features and benefits:

- For use in riser and general purpose areas per NEC® Articles 725, 770, 800 and 820
- Riser-Gard is also suitable for direct burial, not approved for exposed applications
- UL® Listed raceway meeting UL 2024
- Available in sizes ¾" through 3"
- Pull tape can be factory pre-installed in 1" through 3"
- Outside diameters meet IPS dimensions
- Footage sequentially marked

Standard stock – coils

Cat. No.	Size (in.)	Color	Pull Tape	Coil Length (ft.)	Product Wt. per 100 ft.(lbs.)
DE4X1-350*	¾	Orange	Empty	350	12
DF4X1C-125		Orange	900 lb.	125	15
DF4X1C-250*		Orange	900 lb.	250	15
DF4X1-250	1	Orange	Empty	250	15
DF4X1C-500		Orange	900 lb.	500	15
DF4X1-250S*		Orange	Empty/split	250	15
DG4X1-200		Orange	Empty	200	17
DG4X1-200S*	1¼	Orange	Empty/split	200	17
DG4X1C-200*		Orange	900 lb.	200	17
DG4X1C-500		Orange	900 lb.	500	17
DH4X1-150S	1½	Orange	Empty/split	150	22
DH4X1C-150*		Orange	900 lb.	150	22
DJ4X1-100S	2	Orange	Empty/split	100	27
DJ4X1C-100*		Orange	900 lb.	100	27
DL4X1C-250	3	Orange	900 lb.	250	27

* Overnight Shippable

Specifications

Size (in.)	I.D. Min. Ref. (in.)	Min. O.D. (in.)	Max. O.D. (in.)	Min. Bend Radius (in.)
¾	.74	1.025	1.075	5
1	.98	1.290	1.340	6
1¼	1.31	1.640	1.690	8
1½	1.54	1.880	1.930	10
2	2.00	2.350	2.400	12
3	3.00	3.422	3.452	18

- Custom orders are not returnable
 - Custom lengths are available in minimum order quantities of 1,000 ft.
 - Custom color runs are available in minimum order quantities of 10,000 ft.
- Options:**
- Color: black, blue, gray, red, white and yellow
 - Two-, three- or four-way parallel
 - Split duct
 - Custom print line

Custom orders – how to build a part number:

Position 1 Product	Position 2 Size (in.)	Position 3 Type	Position 4 Wall	Position 5 Color	Position 6 Pull Line	Position 7 Length
D = Riser-Gard	E = ¾	4 = Corrugated	X = Standard	1 = Orange	C = 900 LB. Tape	Example
	F = 1			2 = Black		-1000 = Feet
	G = 1¼			3 = Gray		-1000S = 1000 Feet split
	H = 1½			4 = White		
	J = 2			5 = Blue		
	L = 3			7 = Yellow		
				8 = Red		

Carlton® Hal-Free Riser-Gard® Raceway

01 Applications: Riser and general purpose

Hal-Free Riser-Gard is a halogen-free non-metallic flexible raceway for use in riser and general purpose applications. In the event of a fire, this product will not release halogen elements into the air, which makes it ideal for applications in tunnels, laboratories and high-tech environments. Hal-Free Riser-Gard is listed to UL® 2024 in accordance with NEC® Articles 725, 770, 800 and 820. Custom lengths and split ducts are available upon request. Hal-Free Riser-Gard is available in white only.

Features:

- Free from halogen elements
- Compliant with NEC® Articles 725, 770, 800 and 820
- Available in sizes 1" through 2"
- Available in white only
- Sequentially marked footage



Technical Info

UL listed to 2024	Test method	Size (in.)
Maximum flame propagation	UL 2024	3' 6" ft.
Maximum air temperature	UL 2024	387°F

NEC and National Electrical Code are registered trademarks of the National Fire Protection Association, Inc.

- Storage and handling: -4° to 150°F
- No UV protection (not suitable for outdoor use)
- Do not store outside



Standard stock – reels

Cat. No.	Size (in.)	Color	Nom. I.D. (in.)	Nom. O.D. (in.)	Pull Tape	Reel Size (F x W) (in.)	Reel type	Reel Length (ft.)	Reel Wt. (lbs.)	Reel Wt. Per 100 Ft. (lbs.)
HF4X4C-5000	1	White	1.049	1.365	900 lb.	72" x 41"	W	5,000	310	7.5
HG4X4C-4000	1¼	White	1.250	1.550	900 lb.	72" x 41"	W	4,000	310	7.5
HH4X4C-2000	1½	White	1.500	1.850	900 lb.	66" x 41"	W	2,000	250	12
HJ4X4C-2000	2	White	2.000	2.425	900 lb.	82" x 41"	W	2,000	365	21

- Custom orders are not returnable
- Custom lengths are available in minimum order quantities of 1,000 ft.

Custom orders – how to build a part number:

Position 1 Product	Position 2 Size (in.)	Position 3 Type	Position 4 Wall	Position 5 Color	Position 6 Pull Line	Position 7 Length
H = Hal-Free	F = 1	4 = Corrugated	X = Standard	4 = White	C = 900 lb. Tape	Example
	G = 1¼					-1000 = Feet
	H = 1½					-1000S = 1000 Feet Split

Carlton

Plenum duct



Applications: Plenum, Riser and
General Purpose Applications per
NEC® Articles 725, 770, 800 and 820

Features and benefits:

- Maximum flame propagation distance is less than 5.0 ft.
- Peak optical density of smoke is less than 0.50
- Average optical density of smoke is less than 0.15
- UL® Listed to UL 2024 Standard
- FT-6 Rated

Standard stock – reels

Cat. No.	Size (in.)	Color	Pull Tape	Reel Size (in.)	Reel Length (ft.)	Reel Wt. (lbs.)	Reel Wt. Per 100 Ft. (lbs.)
PLM100T-500		White	900 lb.	34 x 23	500	30	10
PLM100T-1800	1	White	900 lb.	48 x 28	1,800	79	10
PLM100T-5000		White	900 lb.	72 x 41	5,000	310	10
PLM100T-8000		White	900 lb.	82 x 41	8,000	365	10
PLM125T-500		White	900 lb.	34 x 23	500	30	14
PLM125T-1000	1½	White	900 lb.	48 x 30	1,000	83	14
PLM125T-5000		White	900 lb.	72 x 41	5,000	310	14
PLM125T-6000		White	900 lb.	82 x 41	6,000	365	14
PLM150T-2000	1½	White	900 lb.	66 x 41	2,000	250	14
PLM150T-4000		White	900 lb.	82 x 41	4,000	365	14
PLM200T-2000	2	White	900 lb.	82 x 41	2,000	365	21

Standard stock – coils/box

Cat. No.	Size (in.)	Color	Pull Tape	Box size (in.)	Coil Length (ft.)	Product Wt. Per 100 Ft. (lbs.)
PLM100T-250B2	1	White	900 lb.	34 x 14 x 34	250	10
PLM125T-250B4	1½	White	900 lb.	39 x 15 x 39	250	14

Specifications

Size (in.)	I.D. Min. Ref. (in.)	Min. O.D. (in.)	Max. O.D. (in.)	Min. Bend Radius (in.)
½	.60	.815	.835	2
¾	.74	1.025	1.045	2
1	1.00	1.292	1.312	3
1½	1.35	1.630	1.650	3
1½	1.50	1.868	1.888	4
2	2.00	2.329	2.439	4

Custom orders – how to build a part number:

Position 1 Product	Position 2 Size (in.)	Position 3 Type	Position 4 Wall
PLM = PLENUM	100 = 1	T = 900 lb. Tape	Example
	125 = 1½		-1000 = Feet
	150 = 1½		
	200 = 2		

Carlton

Riser duct



Features and benefits:

- Maximum flame propagation: 6.0 ft. max. value
- Do not store outside
- No UV protection
- UL® Listed to UL 2024
- FT-4 Rated

Applications: Riser and General Purpose Applications per NEC® Articles 725, 770, 800 and 820. Suitable or vertical runs in a shaft or between floors.

Standard stock – reels

Cat. No.	Size (in.)	Color	Pull Tape	Reel Size (in.)	Reel length (ft.)	Reel Wt. (lbs.)	Product Wt. per 100 ft. (lbs.)
RIS100T-5000	1	Orange	900 lb.	66 x 41	5,000	250	15
RIS125T-4000	1¼	Orange	900 lb.	72 x 41	4,000	310	17
RIS150T-2000	1½	Orange	900 lb.	66 x 41	2,000	250	22
RIS200T-2000	2	Orange	900 lb.	66 x 41	2,000	250	27

Specifications

Size (in.)	I.D. Min. Ref. (in.)	Min. O.D. (in.)	Max. O.D. (in.)	Min. Bend Radius (in.)
¾	.74	1.025	1.075	6
1	.98	1.290	1.340	6
1¼	1.31	1.640	1.690	7
1½	1.54	1.880	1.930	8¼
2	2.00	2.350	2.400	9½

Custom orders – how to build a part number:

Position 1 Product	Position 2 Size (in.)	Position 3 Type	Position 4 Wall
RIS = Riser	100 = 1	T = 900 lb. Tape	Example
	125 = 1¼		-1000 = Feet
	150 = 1½		
	200 = 2		

Carlton

Hal-free riser duct



Features and benefits:

- Maximum flame propagation: 6.0 ft. max. value
- Do not store outside
- No UV protection
- UL® Listed to UL 2024 Standard
- FT-4 Rated

Applications: Riser and General Purpose Applications per NEC® Articles 725, 770, 800 and 820. Suitable or vertical runs in a shaft or between floors.

Standard stock – reels

Cat. No.	Size (in.)	Color	Pull Tape	Reel Size (in.)	Reel length (ft.)	Reel Wt. (lbs.)	Product Wt. per 100 ft. (lbs.)
RHF100T-5000	1	White	900 lb.	66 x 41	5,000	250	15
RHF125T-4000	1¼	White	900 lb.	72 x 41	4,000	310	17
RHF150T-2000	1½	White	900 lb.	66 x 41	2,000	250	22
RHF200T-2000	2	White	900 lb.	82 x 41	2,000	365	27

Specifications

Size (in.)	I.D. Min. Ref. (in.)	Min. O.D. (in.)	Max. O.D. (in.)	Min. Bend Radius (in.)
¾	.74	1.025	1.075	6
1	.98	1.290	1.340	6
1¼	1.31	1.640	1.690	7
1½	1.54	1.880	1.930	8¼
2	2.00	2.350	2.400	9½

Custom orders – how to build a part number:

Position 1 Product	Position 2 Size (in.)	Position 3 Type	Position 4 Wall
RHF = Hal-Free Riser	100 = 1	T = 900 lb. Tape	Example
	125 = 1¼		-1000 = Feet
	150 = 1½		
	200 = 2		

Carlon®

Micro-Gard® Plenum and Micro-Gard® Riser Duct

Small. Slick. Speedy. Ideal for Telecom installs!

Carlon Micro-Gard Plenum and Micro-Gard Riser is specifically designed to provide fiber pathways in plenum and riser applications in multi-dwelling units (MDUs) and other premise structures.

The 8/6 and 12/10 mm size conduits can be installed individually or used to optimize space in existing duct structures. And the small size significantly reduces the structural damage caused during pass-throughs.

Micro-Gard Plenum and Riser is UL® Listed for plenum and riser applications. It's easy to handle, easy to install and easy to conceal, making it the ideal MDU cable management system.

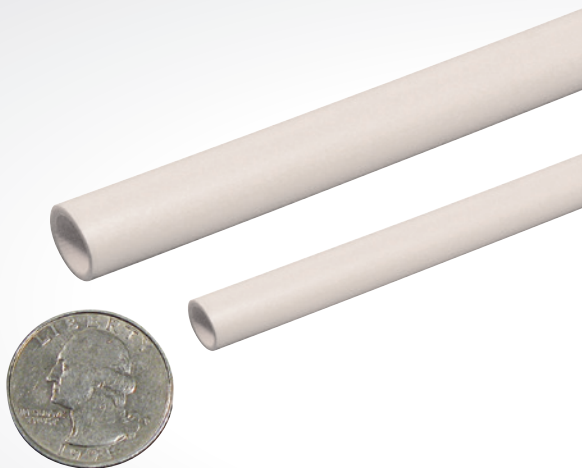
Features and benefits

- UL® and cUL Listed to UL 2024 for plenum and riser applications
- Compliant with NEC® Articles 725, 770, 800 and 820
- Two sizes: 8/6mm and 12/10mm. The smaller sizes accommodate the size constraints of multi-dwelling units and make installations faster and easier
- Smooth interior wall eliminates snag points and provides low coefficient of friction, regardless of whether jetting or pull-tape is used
- Superior burn-through resistance for longer cable pulls
- Pre-lubricated, factory installed pull-tape makes installing cable faster and easier (option available for empty duct)
- Sequentially marked footage to easily identify lengths and reduce waste
- Reel sizes from 1,000 to 5,000 feet for easy handling on the jobsite
- Future-proofing raceway system for fast, easy wire/cable upgrades, changes and moves
- Used in cable bundles

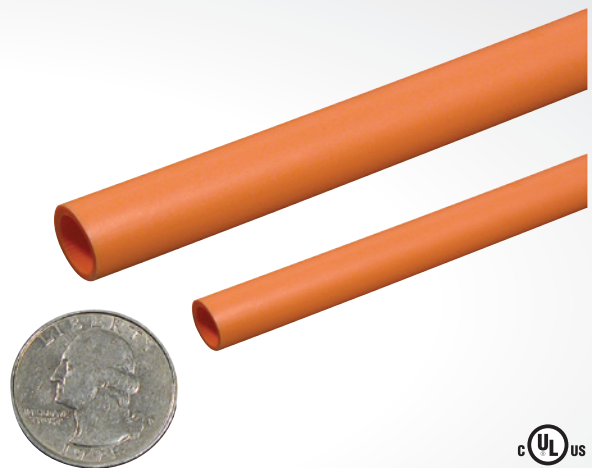
—
01 Micro-Gard Plenum

—
02 Micro-Gard Riser

NEC and National Electrical Code are registered trademarks of the National Fire Protection Association, Inc.



—
01



—
02



Carlton

Micro-Gard Plenum and Micro-Gard Riser

Cat. No.	Size	Type	Color	Factory Installed	Pre-Lubricated Radius (in.)*	Min. Bend Feet/Reel	Reel Size (in.)
MGP08MT-1000	8/6 mm	Plenum	White	50 lb. cord	2	1,000	24
MGP08MT-2500	8/6 mm	Plenum	White	50 lb. cord	2	2,500	24
MGP08MT-5000	8/6 mm	Plenum	White	50 lb. cord	2	5,000	36
MGP12MT-1000	12/10 mm	Plenum	White	50 lb. cord	4	1,000	24
MGP12MT-2500	12/10 mm	Plenum	White	50 lb. cord	4	2,500	24
MGP12MT-5000	12/10 mm	Plenum	White	50 lb. cord	4	5,000	36
MGR08JT-1000	8/6 mm	Riser	Orange	50 lb. cord	2	1,000	24
MGR08JT-2500	8/6 mm	Riser	Orange	50 lb. cord	2	2,500	24
MGR08JT-5000	8/6 mm	Riser	Orange	50 lb. cord	2	5,000	36
MGR12JT-1000	12/10 mm	Riser	Orange	50 lb. cord	4	1,000	24
MGR12JT-2500	12/10 mm	Riser	Orange	50 lb. cord	4	2,500	24
MGR12JT-5000	12/10 mm	Riser	Orange	50 lb. cord	4	5,000	36

*NOTE: Do not exceed the minimum bend radius during installation of the product.

Micro-Gard Plenum dimensions – smooth O.D./Ribbed I.D.

Cat. No.	Outside diameter		inch	Wall		Inside dia. (min.)			Std. Wt. (lb./100 ft.)
	inch	mm		mm	inch	mm	# Ribs		
MGP12RMT	.472 +/- .004	12 +/- .1	.047 +0/- .004	1 +0/- .1	.354	8.9	26	4.92	
MGP08RMT	.315 +/- .004	8 +/- .1	.040 +0/- .004	1 +0/- .1	.212	5.4	16	2.68	

Micro-Gard Riser dimensions – smooth O.D./Ribbed I.D.

Cat. No.	Outside diameter		inch	Wall		Inside dia. (min.)			Std. Wt. (lb./100 ft.)
	inch	mm		mm	inch	mm	# Ribs		
MGR12RJT	.472 +/- .004	12 +/- .1	.047 +0/- .004	1 +0/- .1	.354	8.9	26	2.86	
MGR08RJT	.315 +/- .004	8 +/- .1	.040 +0/- .004	1 +0/- .1	.212	5.4	16	1.55	

How to interpret a catalog number

Position 1 Product	Position 2 Type	Position 3 Size	Position 4 Color	Position 5 Pull Line	Position 6 Length
MG = Micro-Gard	P = Plenum R = Riser	08 = 8/6mm 12 = 12/10mm	J = Orange M = White	T = 50 lb. Cord	Example -1000 = Feet

Non-metallic adapters and couplings

For use with Plenum-Gard

Couplings



Cat. No.	Size	Color	Std. Ctn.	Std. Wt. (lbs.)
A340F	1	Orange	50	2.50

Threaded adapters



Cat. No.	Size	Color	Std. Ctn.	Std. Wt. (lbs.)
A343F	1	Orange	50	1.55

Snap-in adapters



Cat. No.	Size	Color	Std. Ctn.	Std. Wt. (lbs.)
A353F	1	Orange	50	3.00

Non-metallic adapters and couplings

For use with Riser-Gard and general purpose

Couplings



Cat. No.	Size	Color	Std. Ctn.	Std. Wt. (lbs.)
SCA240E	$\frac{3}{4}$	Orange	25	.783
SCA240F	1	Orange	20	.972

Threaded adapters



Cat. No.	Size	Color	Std. Ctn.	Std. Wt. (lbs.)
SCA243E	$\frac{3}{4}$	Orange	100	2.30
SCA243F	1	Orange	50	2.00

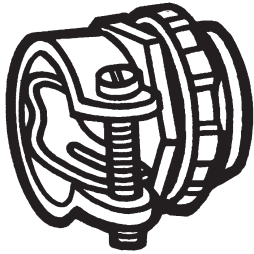
Snap-in adapters



Cat. No.	Size	Color	Std. Ctn.	Std. Wt. (lbs.)
SCA253E	$\frac{3}{4}$	Orange	100	2.90
SCA253F	1	Orange	50	2.30

For use

with Plenum-Gard



Metallic terminal adapter

Cat. No.	Size (in.)	Std. Ctn.	Std. Wt. (lbs.)
▶ 255	3/4	10	12
▶ 256	1	100	25
▶ 257	1 1/4	100	28
▶ 258	1 1/2	100	35
▶ 259	2	50	19



Flat sealing washer

Cat. No.	Size (in.)	Std. Ctn.	Std. Wt. (lbs.)
▶ E943EW	3/4	125	.45
▶ E943FW	1	100	.46
▶ E943GW	1 1/4	50	.44
▶ E943HW	1 1/2	50	.45
▶ E943JW	2	25	.42

Where a waterproof termination is required into any enclosure (metallic or non-metallic), install the neoprene washer over the threads of a terminal adapter before inserting into the enclosure. Use a standard locknut or threaded bushing to secure the assembly integrity.



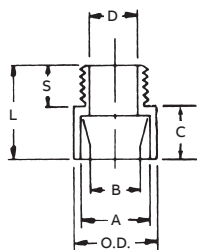
For use

with Riser-Gard and General Purpose

For adapting non-metallic conduits to boxes, threaded fittings, metallic systems. Male threads on one end, socket end on other.



Non-metallic male terminal adapters



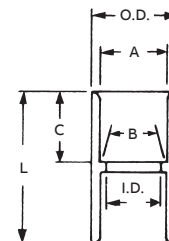
Cat. No.	Size (in.)	Std. Ctn.	Color	Dimensions (in.)					Std. Wt. (lbs.)		
				A	B	Min. D	Max. O.D.	C		T	L
E943E	3/4	125	Gray	1.064	1.046	.800	1 11/32	3/4	9/16	1 3/8	3.5
E943F	1	50	Gray	1.330	1.310	1.018	1 1/8	1 11/16	1 25/32	3	
E943G	1 1/4	50	Gray	1.677	1.655	1.332	2 1/32	1 3/4	1 15/16	4	
E943H	1 1/2	25	Gray	1.918	1.894	1.566	2 5/32	1 3/16	3/4	2 1/16	2.5
E943J	2	50	Gray	2.393	2.369	2.000	2 21/32	1 3/16	3/4	2 1/8	7
SCE943G	1 1/4	50	Orange	1.677	1.655	1.332	2 1/32	1 3/4	1 15/16	4	
SCE943H	1 1/2	25	Orange	1.918	1.894	1.566	2 5/32	1 3/16	3/4	2 1/16	2.5
SCE943J	2	50	Orange	2.393	2.369	2.000	2 21/32	1 3/16	3/4	2 1/8	7

All socket fittings should be attached using Carlon solvent cement. Using Carlon fittings with Carlon non-metallic conduit ensures system integrity.



Non-metallic standard couplings

Socket type for joining non-metallic conduit.



Cat. No.	Size (in.)	Std. Ctn.	Color	Dimensions (in.)					Std. Wt. (lbs.)	
				A	B	Min. D	Max. O.D.	C		L
E940E	3/4	100	Gray	1.064	1.046	.840	1 5/16	3/4	1 3/8	4.4
E940F	1	50	Gray	1.330	1.310	1.210	1 5/8	1 5/16	2	3.5
E940G	1 1/4	30	Gray	1.677	1.655	1.535	1 63/64	1	2 1/8	3.5
E940H	1 1/2	25	Gray	1.918	1.894	1.755	2 15/64	1 1/8	2 3/8	3.9
E940J	2	30	Gray	2.393	2.369	2.190	2 47/64	1 3/16	2 1/2	5.25
SCE940G	1 1/4	30	Orange	1.677	1.655	1.535	1 63/64	1	2 1/8	3.5
SCE940H	1 1/2	25	Orange	1.918	1.894	1.755	2 15/64	1 1/8	2 3/8	3.9
SCE940J	2	30	Orange	2.393	2.369	2.190	2 47/64	1 3/16	2 1/2	5.25

Low-voltage

Boxes and brackets



Dual-voltage box/bracket*



Cat. No.	Cover	Volume	Std. Ctn.	Std. Wt. (lbs.)
SC200DV	1-Gang	20.5 cu. in	16	6.4

*U.S. Patent D463,376.



Low-voltage add-on bracket*



Cat. No.	Size	Std. Ctn.	Std. Wt. (lbs.)
SC100SC	1-gang	24	2.3

*U.S. Patent D459,312. U.S. Patent 6,710,245. U.S. Patent 6,872,884.



Low-voltage adjustable brackets*

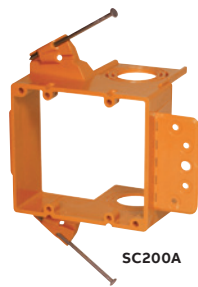


Cat. No.	Size	Std. Ctn.	Std. Wt. (lbs.)
SC100ADJC	1-gang	24	7.5
SC200ADJC	2-gang	20	6.9

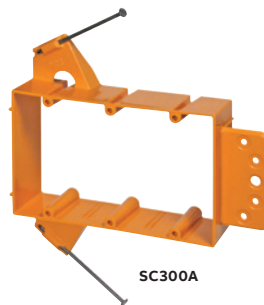
*U.S. Patent 5,289,934.



SC100A



SC200A



SC300A

Low-voltage brackets*



Cat. No.	Cover	Volume	Std. Ctn.	Std. Wt. (lbs.)
SC100A	1-Gang	3/4, 1, 1 1/4	24	5.3
SC200A	2-Gang	3/4, 1, 1 1/4	24	7.7
SC300A	3-Gang	—	5	1.6

*U.S. Patent D457,140. U.S. Patent D462,664. U.S. Patent 6,812,405.

Carlton

Low-VOC Cements

*Meets ASTM D2564

Medium – clear

Recommended pipe application and sizes		Set-up time (Evaporation Rate)	Recommended installation temp.	Lap Shear @ 73°F	Viscosity at 75° as manufactured
Recommended for all grades and types of Carlton wireway and fittings, except Flex-Plus® Blue™ ENT (Electrical Non-Metallic Tubing.)	10°–30°F	Not recommended	40° to 100°F	2 hrs. 350 psi	500–900 cps
	30°–50°F	5–6 minutes		16 hrs. 800 psi	
	50°–70°F	3–4 minutes		72 hrs. 1,500 psi	
	70°–90°F	1–2 minutes			

Up through 6" diameter.



Cat. No.	Size	Applicator	Description	Std. Ctn.	Std. Wt. (lbs.)
VC9963	Pint	Dauber	PVC medium clear	24	29.0
VC9962	Quart	Dauber	PVC medium clear	12	27.5
VC9961P	Gallon	—	PVC medium clear	6	53.5

Meets ASTM D-2564.

Regular – clear

Recommended pipe application and sizes		Set-up time (Evaporation Rate)	Recommended installation temp.	Lap Shear @ 73°F	Viscosity at 75° as manufactured
Recommended for all grades and types of Carlton wireway and fittings, except Flex-Plus® Blue™ ENT (Electrical non-metallic tubing.)	10°–30°F	Not recommended	40° to 100°F	2 hrs. 350 psi	500–900 cps
	30°–50°F	5–6 minutes		16 hrs. 800 psi	
	50°–70°F	3–4 minutes		72 hrs. 1,500 psi	
	70°–90°F	1–2 minutes			

Up through 6" diameter.



Cat. No.	Size	Applicator	Description	Std. Ctn.	Std. Wt. (lbs.)
VC9964	½ Pint	Dauber	PVC regular clear	10	6.5

Meets ASTM D-2564.

Carlton

Low-VOC Cements

*Meets ASTM D2564

All weather – clear

Recommended pipe application and sizes		Set-up time (Evaporation Rate)	Recommended installation temp.		Lap Shear @ 73°F	Viscosity at 75° as manufactured
Recommended for all grades and types of Carlon wireway and fittings, except Flex-Plus® Blue™ ENT (Electrical Non-Metallic Tubing.)	-5°–10°F	6–8 minutes	-5° to 100°F	2 Hrs.	350 PSI	400–700 CPS
	10°–30°F	4–5 minutes		16 Hrs.	800 PSI	
	30°–50°F	3–4 minutes		72 Hrs.	1,500 PSI	
	50°–70°F	1–2 minutes				
	70°–90°F	½–1½ minutes				

Up through 6" diameter.



Cat. No.	Size	Applicator	Description	Std. Ctn.	Std. Wt. (lbs.)
VC9984	½ Pint	Dauber	All weather "Quick-Set" cement	10	7.0
VC9983	Quart	Dauber	All weather "Quick-Set" cement	24	30.0
VC9982	Quart	Dauber	All weather "Quick-Set" cement	12	29.0
VC9961P	Gallon	—	All weather "Quick-Set" cement	6	54.0

Gray

Recommended pipe application and sizes		Set-up time (Evaporation Rate)	Recommended installation temp.		Lap Shear @ 73°F	Viscosity at 75° as manufactured
Recommended for all grades and types of Carlon wireway and fittings, except Flex-Plus® Blue™ ENT (Electrical non-metallic tubing.) VOC emission of 490 grams/liter per the Bay and South Coast test method.	10°–30°F	Not recommended	40° to 100°F	2 hrs.	350 psi	500–900 cps
	30°–50°F	5–6 minutes		16 hrs.	800 psi	
	50°–70°F	3–4 minutes		72 hrs.	1,500 psi	
	70°–90°F	1–2 minutes				

Up through 6" diameter.



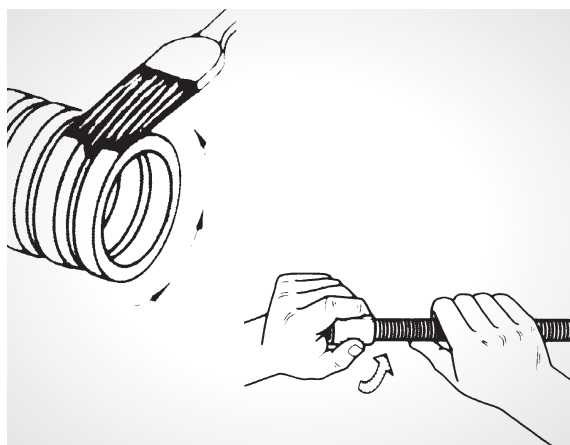
Cat. No.	Size	Applicator	Description	Std. Ctn.	Std. Wt. (lbs.)
VC9LV4-24	½ Pint	Dauber	Low VOC gray	24	15.5
VC9LV3	Pint	Dauber	Low VOC gray	24	27.0
VC9LV2	Quart	Dauber	Low VOC gray	12	26.0

Meets ASTM D-2564.

Concrete Encasement Guidelines

for Carlon ENT

1. Cut ENT square and clean.
2. Insert end into fitting, making sure two (2) full corrugations are snapped into fitting beyond flexible tabs (2 clicks).
3. ENT should be tied to rebar at 2–3 foot intervals to prevent flotation. Keep ENT straight. Small deflections over a long run may accumulate significant degrees of bend that will affect conductor installation. Suitable materials include wire, tie wraps and tape.
4. When using rigid non-metallic conduit fittings for concrete tight performance:



Specifications:

- 1.1 Electrical non-metallic tubing (ENT) is designed to replace EMT, flexible metal conduit or other raceway or cable systems, for installation in accordance with Article 362 of the National Electrical Code® Section 12-1500 of the CEC, other applicable sections of the Code and local codes.
- 1.2 Any ENT used shall be listed to the requirements of UL Standard UL 1653 in accordance with Article 362 of the NEC® and Section 12-1500 of the CEC.
- 1.3 Any ENT used shall meet the requirements of BI National Standard CAN/CSA-C22.2 No. 227.1-UL1653 and shall be Listed/Certified in accordance to the Electrical Codes.
- 1.4 Carlon's ENT shall be installed per the technical assessment prepared by fire cause analysis for use in 1-hour and 2-hour rated construction.
- 1.5 Penetration of fire-rated walls, floors or ceilings shall use Classified through-penetration Firestop Systems described in the current Underwriters Laboratories Fire Resistance Directory.
- 1.6 Fittings and outlet boxes designed for use with ENT shall be listed. All fittings, boxes and accessories shall be from one manufacturer.
- 1.7 Only Carlon ENT Blue™ cement recommended specifically for use with ENT and rigid non-metallic fittings shall be used.
- 1.8 Unless indicated differently on drawings, ENT systems shall be color coded: BLUE for branch and feeder circuit wiring, YELLOW for communications and RED for fire alarm and emergency systems, or colors can designate different voltages.
- 1.9 ENT, fittings and accessories shall be manufactured by Carlon.

Features:

- Recognized for use with PVC rigid non-metallic conduit fittings with all sizes of ENT
- ENT rated for 90°C conductors U.S., and 75°C Canada
- One-piece ENT coupling, threaded terminator and RNC Transition fitting are rated concrete tight without tape
- Recognized for use in 2-hour fire-resistive nonload-bearing and load-bearing wall assemblies
- Recognized for use in 1-hour fire-resistive nonload-bearing wall assemblies
- Recognized for use in a fire-resistive ceiling assembly (up to three hours)
- Recognized for through-penetration Firestop systems as classified by UL to meet ICC building codes.
- Conductors easily push through the raceway (up to approximately 50 feet)*
- For use in buildings in accordance with NEC® Article 362/ CEC Section 12-1500
- Outside diameters meet IPS dimensions
- Storage -4°F to 158°F
- Handling -4°F to 104°F

- A. Do not use chemical primer or cleaner.
- B. Use a brush to apply a light, uniform coat of cement labeled for use with ENT on the coupling and ENT.
- C. Do not use a dauber.
- D. Brush excess cement out of ENT grooves.
- E. Promptly insert ENT into fitting while cement is wet, until the stop is reached, and give a quarter turn.
- F. Do not disturb until joint is set.

NEC and National Electrical Code are registered trademarks of the National Fire Protection Association, Inc.

Concrete Encasement Guidelines

for Carlon ENT

Approved uses:

- Concrete slab – NEC® Article 362/CEC Section 12-1500
- Walls – wood stud, masonry and metal stud – NEC® Article 362/CEC Section 12-1500
- Ceilings — permanent or dropped (free air only) – NEC® Article 362/CEC Section 12-1500
- Exposed – NEC® Article 362/CEC Section 12-1500
- Public assembly – NEC® Section 518.4, in non-fire rated and certain fire rated structures
- Prewired – NEC® Article 362/CEC Section 12-1500
- Classified by UL 1479 for Through Penetration Firestop Systems in UL Guide Category XHEZ and current UL Fire Resistance Directory
- Three-hour rated floor/ceiling assembly
- Raised floors – NEC® Section 645.5(E)(2)
- Exposed or concealed in building above three floors when a fire sprinkler system is installed in accordance with NFPA 13 – NEC® Section 362.10(2)
- For use in residential attics up to three feet above the bottom of the ceiling joist
- Maximum ambient temperature 140°F (60°C)

Typical applications:

- Residential: low or high rise – multi or single family
- Commercial: low or high rise – office, retail, hotel/motel, restaurant, etc.
- Nursing homes/hospitals in non-patient care areas only
- Schools, classrooms, dormitories, offices
- Fire alarm systems
- Recreational vehicles and parks
- Solar photovoltaic systems
- Marinas and boatyards
- Other uses per the current NEC® and CEC

NEC and National Electrical Code are registered trademarks of the National Fire Protection Association, Inc.

Carlon Innerduct guide

When Innerduct is being used inside the building...

Plenum

- Must be UL® Listed
- Plenum cable must be installed
- Color: Industry standard orange
- Pull tape pre-installed in sizes ½" through 3"

General purpose and riser

- Must be UL® Listed
- Riser rated cable must be used in riser applications
- Color: Industry-standard orange

Cat. No.	Carlon Size (in.)
CD4X1C	½
CE4X1C	¾
CF4X1C	1
CG4X1C	1¼
CH4X1C	1½
CJ4X1C	2
CL4X1C	3

Cat. No.	Carlon Size (in.)
DE4X1C	¾
DF4X1C	1
DG4X1C	1¼
DH4X1C	1½
DJ4X1C	2
DL4X1C	3
CL4X1C	3

Note: HDPE innerduct will not meet code
Specifying and installing UL Listed innerducts with the anticipation of future upgrades provides the building owner with a low-cost solution for the removal of abandoned cables.

Index

Cat. No.	Page	Cat. No.	Page	Cat. No.	Page
255	29	A220F	6	A58381E	14
256	29	A220F	6	A615D	17
257	29	A220G	6	A615DE	17
258	29	A220H	6	A615DH	17
259	29	A220J	6	A615DJ	17
12005-200	5	A238	11	A615DL	17
12005-UPC	5	A238DIV	11	A615E	17
12005AK-001	4	A240D	12	A861	13
12005AKC-001	4	A240E	12	A862D	13
12005C-370	5	A240F	12	A862E	13
12005R-200	5	A243D	12	A863-4SQ	8
12005Y-200	5	A243E	12	A863-4SQF	8
12007-100	5	A243F	12	A863BC	7
12007-UPC	5	A245D	10	A863CF	7
12007AA-001	4	A245E	10	A863CFF	8
12007C-240	5	A245F	10	A863CFG	7
12007R-100	5	A253D	12	A863CFGF	8
12007Y-100	5	A253E	12	A863D	8
12008-010	5	A253F	12	A863DF	8
12008-100	5	A263D	10	A863DG	8
12008-750	4	A263E	10	A863DGF	8
12008C-160	5	A263F	10	A863MB	9
12008C-750	4	A273DE	10	A863S	7
12008R-100	5	A273EF	10	A863SF	8
12008R-750	4	A293DEF	9	A863SG	7
12008Y-100	5	A340F	28	A863SGF	8
12008Y-750	4	A343F	28	A864D	13
12009-750	4	A353F	28	A864E	13
12010-750	4	A400	15	A864F	13
12010Y-750	4	A410	15	C861G	13
12011-500	4	A411	15	CC120B	18
12011R-500	4	A412	15	CD4X1C-1500	19
12011Y-500	4	A413	15	CD4X1C-500	20
1205AKR-001	4	A414	15	CE4X1-1000	19
1205AKY-001	4	A420	15	CE4X1-1000S	19
1207AAC-001	4	A421	15	CE4X1-350*	20
1207AAR-001	4	A422	15	CE4X1-350S	20
1207AAY-001	4	A470D	16	CE4X1C-1000	19
A122	11	A471	16	CF4X1-100S*	20
A200D	6	A472	16	CF4X1-250	20
A200E	6	A52151D	14	CF4X1-250S*	20
A200F	6	A52151E	14	CF4X1C-100*	20
A210D	6	A52171D	14	CF4X1C-1000	19
A210E	6	A52171E	14	CF4X1C-1500	19
A210F	6	A5217DE	14	CF4X1C-250*	20
A220D	6	A521DE	14	CF4X1C-500	19
A220D	6	A5329DE	15	CF4X1C-5200	19
A220E	6	A540DS	15	CF4X1C-6500	19
A220E	6	A58381D	14	CF4X1C-8000	19

Index

Cat. No.	Page	Cat. No.	Page	Cat. No.	Page
CG4X1-200S	20	DG4X1C-900	21	HH4X4C-2000	23
CG4X1-500S	19	DH4X1-150S	22	HJ4X4C-2000	23
CG4X1-900S	19	DH4X1C-1200	21	MGP08MT-1000	27
CG4X1C-1600	19	DH4X1C-150*	22	MGP08MT-2500	27
CG4X1C-200*	20	DH4X1C-4000	21	MGP08MT-5000	27
CG4X1C-3200	19	DH4X1C-4500	21	MGP08RMT	27
CG4X1C-500	19	DJ4X1-100S	22	MGP12MT-1000	27
CG4X1C-6500	19	DJ4X1C-100*	22	MGP12MT-2500	27
CG4X1C-900	19	DJ4X1C-2000	21	MGP12MT-5000	27
CH4X1-150S	20	DJ4X1C-2800	21	MGP12RMT	27
CH4X1C-1200	19	DJ4X1C-700	21	MGR08JT-1000	27
CH4X1C-150*	20	DL4X1C-250	22	MGR08JT-2500	27
CH4X1C-350	19	DL4X1C-750	21	MGR08JT-5000	27
CH4X1C-4000	19	E460R-CAR	16	MGR08RJT	27
CJ4X1-100S	20	E92CSH	18	MGR12JT-1000	27
CJ4X1-200S	19	E92CSJ	18	MGR12JT-2500	27
CJ4X1C-100*	20	E92CSL	18	MGR12JT-5000	27
CJ4X1C-1400	19	E92CSN	18	MGR12RJT	27
CJ4X1C-2000	19	E92CSP	18	PLM100T-1800	24
CJ4X1C-225	19	E92CSR	18	PLM100T-250B2	24
CJ4X1C-2800	19	E940D	12	PLM100T-500	24
CJ4X1C-700	19	E940E	12	PLM100T-5000	24
CL4X1C-150	19	E940E	29	PLM100T-8000	24
DE4X1-1000	21	E940F	12	PLM125T-1000	24
DE4X1-350*	22	E940F	29	PLM125T-250B4	24
DF4X1-250	22	E940G	12	PLM125T-500	24
DF4X1-250S*	22	E940G	29	PLM125T-5000	24
DF4X1C-1000	21	E940H	12	PLM125T-6000	24
DF4X1C-125	22	E940H	29	PLM150T-2000	24
DF4X1C-1500	21	E940J	12	PLM150T-4000	24
DF4X1C-250*	22	E940J	29	PLM200T-2000	24
DF4X1C-2700	21	E943D	12	RHF100T-5000	25
DF4X1C-500	22	E943E	12	RHF125T-4000	25
DF4X1C-500R	21	E943E	29	RHF150T-2000	25
DF4X1C-5200	21	E943EW	29	RHF200T-2000	25
DF4X1C-6500	21	E943F	12	RIS100T-5000	25
DF4X1C-7000	21	E943F	29	RIS125T-4000	25
DF4X1C-9400	21	E943FW	29	RIS150T-2000	25
DG4X1-200	22	E943G	12	RIS200T-2000	25
DG4X1-200S*	22	E943G	29	SC100A	30
DG4X1C-1500	21	E943GW	29	SC100ADJC	30
DG4X1C-1600	21	E943H	12	SC100SC	30
DG4X1C-200*	22	E943H	29	SC200A	30
DG4X1C-3200	21	E943HW	29	SC200ADJC	30
DG4X1C-4500	21	E943J	12	SC200DV	30
DG4X1C-500	22	E943J	29	SC300A	30
DG4X1C-500R	21	E943JW	29	SCA240E	28
DG4X1C-5600	21	HF4X4C-5000	23	SCA240F	28
DG4X1C-6500	21	HG4X4C-4000	23	SCA243E	28

Index

Cat. No.	Page
SCA243F	28
SCA253E	28
SCA253F	28
SCE940G	29
SCE940H	29
SCE940J	29
SCE943G	29
SCE943H	29
SCE943J	29
TL14505	18
TL14510	18
TL38203	18
TL38210	18
TL38265	18
VC9961P	31
VC9961P	32
VC9962	31
VC9963	31
VC9964	31
VC9982	32
VC9983	32
VC9984	32
VC9992	18
VC9LV2	32
VC9LV3	32
VC9LV4-24	32

Additional information

We reserve the right to make technical changes or modify the contents of this document without prior notice. With regard to purchase orders, the agreed particulars shall prevail. ABB AG does not accept any responsibility whatsoever for potential errors or possible lack of information in this document.

We reserve all rights in this document and in the subject matter and illustrations contained therein. Any reproduction, disclosure to third parties or utilisation of its contents – in whole or in parts – is forbidden without prior written consent of ABB AG.



—
US

ABB Installation Products
Electrification business
860 Ridge Lake Blvd.
Memphis, TN 38120
+1 901-252-5000

tnb.abb.com