

Discover EcoMag Technology

Securitron® M680E & M380E Series
Sustainable Magnalocks®

ELECTRONIC SECURITY HARDWARE SECURITRON PRODUCTS

Experience a safer
and more open world



When strength, integration, style and sustainability matter. Nothing compares to Securitron EcoMags.

The Securitron M680E & M380E Series delivers the same unsurpassed intelligence, style and convenience as the previous Securitron M680 & M380 Series but with up to 80% reduction in energy consumption, making them the most advanced electromagnetic locks available.



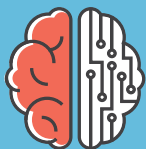
Easy Install

New strike plate mounting template ensures strike alignment quickly. This helps to reduce errors and allows for time to complete more jobs per day which can result in increased revenue.



Versatile

All-in-one optional integrated features provides flexibility to customize as needed.



Intelligent

Optional door prop sensing allows the magnet to de-energize the coil when the door is held open for extended periods, dropping the power draw as low as 20 mA at 24 V.



Sustainable

With up to 80% decreased energy consumption, the Securitron M680E & M380E Series are the most energy-efficient magnalocks available. Along with decreased energy consumption, the biodegradable foam packing insert makes the Securitron M680E & M380E sustainable inside and out.



Specifications

Certifications

M380E

- UL 10C Listed
- UL 1034 Burglary-Resistant Listed
- UL 294 Listed
- CAN4-S104, CAN/ULC Listed
- ANSI/BHMA A156.23, Grade 3
- California State Fire Marshal Approved

M680E

- UL 10C Fire Rated, 1 Hour
- UL 1034 Burglary-Resistant Listed
- UL 294 Recognized Component
- CAN/ULC-S104 Fire Door Conformant
- ANSI/BHMA A156.23, Grade 2
- California State Fire Marshal Listed

Electrical Consumption

M380E

- **Maglock Average Power Draw (±10%)**
 - » 140 mA at 12 VDC
 - » 90 mA at 24 VDC
- **Maglock Maximum Power Draw (±10%)**
 - » 585 mA at 12 VDC
 - » 310 mA at 24 VDC
- **REX Power (±10%)**
 - » Adds 25 mA at 12 VDC
 - » Adds 10 mA at 24 VDC

M680E

- **Maglock Average Power Draw (±10%)**
 - » 113 mA at 12 VDC
 - » 52 mA at 24 VDC
- **Maglock Maximum Power Draw (±10%)**
 - » 515 mA at 12 VDC
 - » 290 mA at 24 VDC
- **REX Power (±10%)**
 - » Adds 25 mA at 12 VDC
 - » Adds 10 mA at 24 VDC

Holding Force

M380E Series

- 600 lbs [272 kg]

M680E Series

- 1,200 lbs [544 kg]

Shipping Weight

M380E Series

- 6.5 lbs [2.94 kg]

M680E Series

- 8 lbs [3.6 kg]

Features

Standard Features

- Sustainability documentation
- Energy efficient, low power usage
- Auto calibration upon installation
- Automatic dual-voltage – no field adjustment required
- LED Indicator shows the lock is secure, open, or has an incomplete bond
- Tamper Switch sends an alarm output if the cover is removed and is selectable to NO or NC
- Autosensing dual voltage with microprocessor technology
- Rust resistant – all ferrous metal surfaces plated for durability
- Adjustable automatic relock timer (0 to 30 seconds)
- Wire chamber anti-tamper switch
- Size optimized for use with door closers
- Patented BondSTAT lock sensor and integrated Door Position Switch (DPS) with relock timer
- MagnaCare® lifetime replacement, no fault, no questions asked warranty

Additional Features for M380E

- Synchronous double door release using a single Request to Exit

Optional Features

- **X** Integrated passive infrared request to exit
- **BD** Patented BondSTAT lock sensor and integrated Door Position Switch (DPS) with relock timer (*Standard on M380E Series*)

How to Order

Model Series	Monitoring Options	Accessory Options	Finish Options
M680E	BD	X	– 606
M680E 1,200 lbs	(blank) No Monitoring BD BondSTAT Monitor & Door Position Switch	(blank) No Accessory Option X PIR Request to Exit	628/US28 Satin Aluminum Clear 600 Paintable Primer Gray Finish 605/US3 Bright Brass 606/US4 Satin Brass 612/US10 Satin Bronze 613E Dark Oxidized Satin Bronze 629 Bright Stainless Steel 630 Satin Stainless Steel BSP Black Suede Powder WSP* White Suede Powder
M380E	BD	X	
M380E 600 lbs	BD BondSTAT Monitor & Door Position Switch (<i>Standard</i>)	(blank) No Accessory Option X PIR Request to Exit	

*Finish option available soon. Please contact your Sales Representative for product details, availability and pricing.



The ASSA ABLOY Group is the global leader in access solutions. Every day, we help billions of people experience a more open world.

ASSA ABLOY
Opening Solutions

ASSA ABLOY Opening Solutions leads the development within door openings and products for access solutions in homes, businesses and institutions. Our offering includes doors, frames, door and window hardware, locks, perimeter fencing, access control and service.



Achieve
Greater
Energy
Efficiency



With Securitron's Eco Products

Securitron EcoPower Power Supply:
Ideal for use with EcoFlex® Mortise
Locks from ASSA ABLOY Group brands
Corbin Russwin and SARGENT.

Securitron M680E & M380E EcoMag
Sustainable Magnalocks: The same
unsurpassed intelligent, style and
convenience as the previous M680
& M380 series, but with **80% energy
consumption reduction.**

ELECTRONIC SECURITY HARDWARE

HES | Securitron

USA

800 626 7590 | assaabloyesh.com

customerservice.esh@assaabloy.com | techsupport.esh@assaabloy.com | orders.esh@assaabloy.com

CANADA

800 461 3007 | assaabloydss.ca

sales.dss.ca@assaabloy.com | orders.dss.ca@assaabloy.com

Connect with ASSA ABLOY Electronic Security Hardware

  @assaabloyesh   ASSA ABLOY Electronic Security Hardware

Patent pending and/or patent www.assaabloydss.com/patents

Copyright © 2019, Hanchett Entry Systems, Inc., an ASSA ABLOY Group company. All rights reserved. Reproduction in whole or in part without the express written permission of Hanchett Entry Systems, Inc. is prohibited. ESH-SEC-58-0719