

HONEYWELL MAGNETIC CONTACT GUIDE



SECURITY & CUSTOM ELECTRONICS

Magnetic Contact Guide

Honeywell Security & Custom Electronics

Honeywell

165 Eileen Way

P.O. Box 9035

Syosset, NY 11791

Tel: 800.467.5875

www.honeywell.com/security

L/MICATCON/D
November 2005
© 2005 Honeywell International Inc.

Honeywell

Table of Contents

Surface Mount Contacts	2-27
Recessed Contacts	28-57
Commercial Contacts	58-77
V-Plex Contacts	78-89
Tamper Loop Contacts	90-105
Glossary	106-107
Conversion Chart	108

Ammo Box

Featured Product

Honeywell's unique Ammo Box packaging provides security professionals with an entirely new level of installation convenience and inventory control. Each Ammo Box contains an "ammo belt" of 50 individually packaged magnetic contacts complete with screws, spacers and covers. Simply tear off the perforated, incrementally numbered bag. The number on the next bag indicates the quantity left in the Ammo Box.

Ammo boxes not only eliminate the frustration of digging through loose parts or sorting through mismatched sets—they make purchasing contacts simple. You can select the exact amount required for an individual installation or purchase the ultra-convenient Ammo Box of 50.

→ Look for contacts featuring the "Available in Ammo Box" symbol throughout this catalog!

**Available in
Ammo Box**



Ammo Box **Magnetic Contacts**

- 50 individually packaged contacts per Ammo Box
- Perforated bags let you take only as many as needed
- Each bag contains all needed parts, including screws, spacers, etc.
- Sequential numbers on bag tell you how many are left in the box

Honeywell

Surface Mount



Available in
Ammo Box

7939WG Magnetic Contact

- Ideal for residential or commercial use
- Standard gap: 1-1/4" (32mm)
- Spacers, covers and screws included

ORDERING:

7939WG-WH – White

7939WG-BR – Brown

7939WG-GY – Grey

7939WG-WH-M – Extra magnet (10 pack)

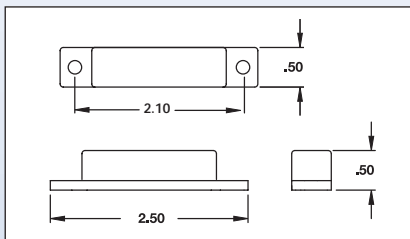
7939WG-BR-M – Extra magnet (10 pack)

7939WG-GY-M – Extra magnet (10 pack)

SPECIFICATIONS:

Switch Type: Form A (SPST) Reed

Contact Rating: 300ma @ 30VDC



REPLACES:

- ADEMCO PR20439, 7939, 7939W
- Aleph DC2541, DC2541-WG
- FBII ZR735
- GRI 29A
- Intellisense MPS20
- Nascom N-85T
- Sentrol 1085T, 1285T
- Tane SM35

Surface Mount



7939-2 Magnetic Contact

- SPDT (Form C) Contact
- Standard gap: 1" (25mm)
- Spaces, covers and screws included
- Cover conceals end of line resistor (EOL)

ORDERING:

7939-2WH – White

7939-2BR – Brown

7939-2GY – Grey

7939WH-M – Extra magnet (10 pack)

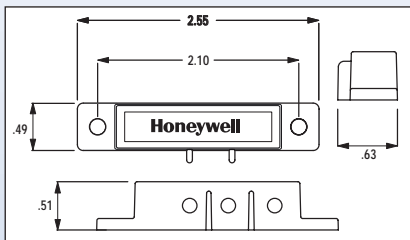
7939BR-M – Extra magnet (10 pack)

7939GY-M – Extra magnet (10 pack)

SPECIFICATIONS:

Switch Type: Form C (SPDT) Reed

Contact Rating: 100ma @ 28VDC



REPLACES:

- GRI 29C
- Sentrol 1087T

Surface Mount



Available in
Ammo Box

7940

Universal Magnetic Contact

- The most versatile mounting options of any contact available – screw mount, adhesive mount or recess
- Super wide gap of 2" (51mm) is standard or 1" (25mm) end-to-end recessed
- Insulation displacement terminals eliminate stripping or soldering, just insert wires and tighten
- Recess adapter plugs included

ORDERING:

7940WH – White

7940BR – Brown

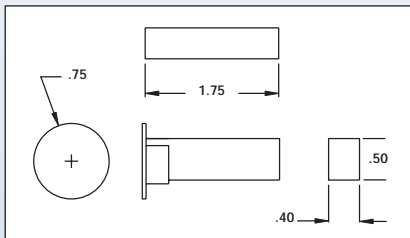
7940WH-M – Extra magnet (10 pack)

7940BR-M – Extra magnet (10 pack)

SPECIFICATIONS:

Switch Type: Form A (SPST) Reed

Contact Rating: 100ma @ 28VDC



Patent # 5,476,397

REPLACES:

- Amseco AMS51
- Sentrol 1038T, 1038-M, 1082TW-M, 1285TW-N
- Tane-50

Surface Mount



Available in
Ammo Box

943WG Mini Magnetic Contact

- Standard gap: 1" (25mm)
- 12" (30cm) leads
- Self-adhesive or screw mount

ORDERING:

943WG-WH – White

943WG-BR – Brown

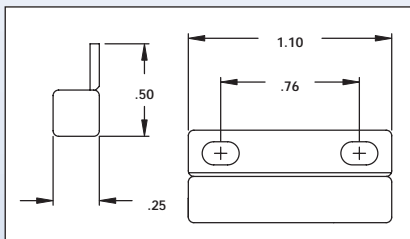
943WG-WH-M– Extra magnet (10 pack)

943WG-BR-M– Extra magnet (10 pack)

SPECIFICATIONS:

Switch Type: Form A (SPST) Reed

Contact Rating: 300ma @ 30VDC



REPLACES:

- ADEMCO PR20443, 943
- Aleph DC-1561, DC-1551-WG
- GRI 50F-12
- Intellisense MPS45
- Nascom N25
- Sentrol 1145, 1032, 1035

Surface Mount



Available in
Ammo Box

945T Miniature Magnetic Contact with Screw Terminals

- Screw mount or adhesive mount
- Screw terminals eliminate wire splicing and soldering
- Standard gap: 1-1/8" (29mm)

ORDERING:

945T-WH – White

945T-BR – Brown

945T-GY – Grey

945WH-M – Extra magnet (10 pack)

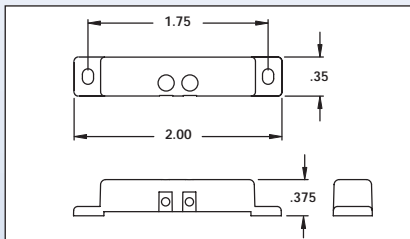
945BR-M – Extra magnet (10 pack)

945GY-M – Extra magnet (10 pack)

SPECIFICATIONS:

Switch Type: Form A (SPST) Reed

Contact Rating: 100ma @ 28VDC



REPLACES:

- Aleph DC-2531-WG
- GRI 100T, 110T
- Sentrol 1038T, 1138T
- Tane-60

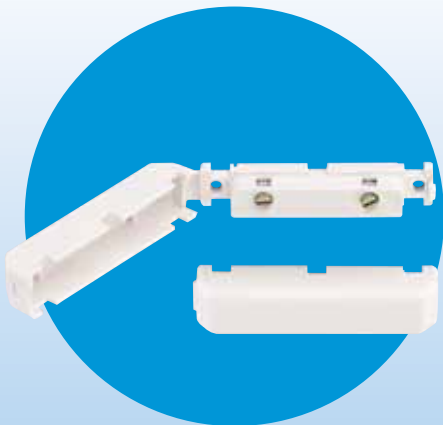
PAL-T

Featured Product

There's a reason why Honeywell's PAL-T contacts are so popular.

Convenience. The revolutionary, one-piece mini surface mount contact features a patented hinged cover that eliminates the hassle of loose parts. Installations are as simple as mounting, wiring, and snapping the case closed!

Despite its small size, the UL, ULC and CE listed PAL-T contact features a 1-1/8" gap—reducing false alarms while speeding up installation time.



PAL-T

Honeywell Exclusive

Patent # 6,135,826

Honeywell

Surface Mount



Available in
Ammo Box

PAL-T Magnetic Contact

- Patented hinged case cover—no loose parts
- Concealed screw terminals eliminate splicing and soldering
- 1-1/8" (29mm) gap makes installation a snap
- Screw mount or adhesive mount
- Six wire entry points for mounting versatility
- Conceals EOL resistor

ORDERING:

PAL-T-WH – White

PAL-T-BR – Brown

PAL-T-GY – Grey

PAL-WH – With 5' leads (5 pack)

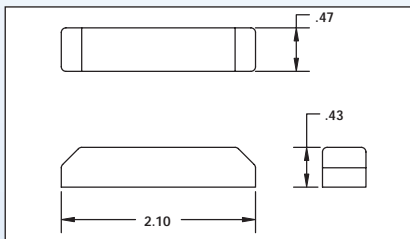
PAL-M-WH – Extra magnet (10 pack)

PAL-M-BR – Extra magnet (10 pack)

SPECIFICATIONS:

Switch Type: Form A (SPST) Reed

Contact Rating: 100ma @ 28VDC

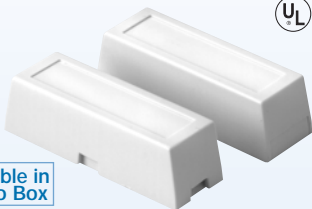


Patent # 6,135,826

REPLACES:

- Aleph DC-2531
- GRI 100T, 100TC, 110T
- Sentrol 1038T
- Tane-60

Surface Mount



Available in
Ammo Box

940 Magnetic Contact

- Miniature size perfect for homes and offices
- Attractive cover keeps mounting screws and terminals screws hidden
- Standard gap: 3/4" (19mm)
- Complete with spacers and mounting screws
- Cover hides EOL resistor

ORDERING:

940WH – White

940BR – Brown

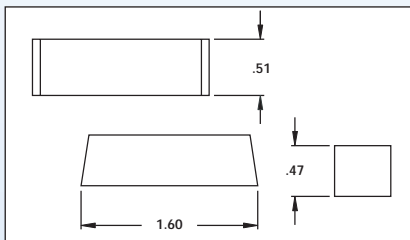
940WH-M – Extra magnet (10 pack)

940BR-M – Extra magnet (10 pack)

SPECIFICATIONS:

Switch Type: Form A (SPST) Reed

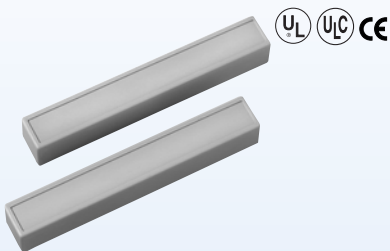
Contact Rating: 100ma @ 28VDC



REPLACES:

- Aleph PS-1523
- GRI 29A, 129A
- Nascom N285T
- Sentrol 1085T, 1285T

Surface Mount



950 Magnetic Contact

- Completely hides mounting screws and terminals
- Standard gap: 1-3/4" (45mm)
- Ideal for concealing end-of-line resistor (EOL)

ORDERING:

950BR – Brown

950GY – Grey

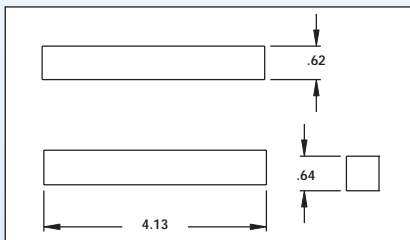
950W-BR – Brown: wide-gap 2-1/4"(57mm)

950W-GY – Grey: wide-gap 2-1/4"(57mm)

SPECIFICATIONS:

Switch Type: Form A (SPST) Reed

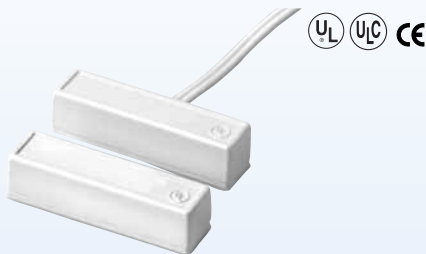
Contact Rating: 100ma @ 28VDC



REPLACES:

- GRI 400
- Sentrol 1045T

Surface Mount



945

Adhesive Mount Magnetic Contact

- Adhesive mount
- Standard gap: 1-1/4" (32mm)
- External test points standard
- 15 ft. leads (4.6m)
- Package Quantity 5 per bag

ORDERING:

945WH – White

945BR – Brown

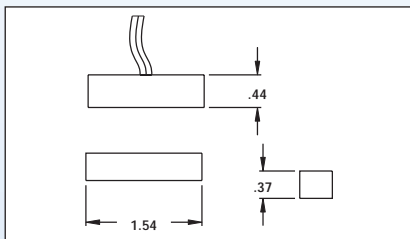
945WH-M – Extra magnet (10 pack)

945BR-M – Extra magnet (10 pack)

SPECIFICATIONS:

Switch Type: Form A (SPST) Reed

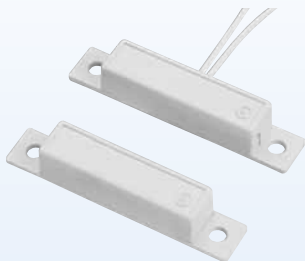
Contact Rating: 100ma @ 28VDC



REPLACES:

- Aleph PS1541
- GRI 100-12, 110-12
- Nascom N35
- Sentrol 1035
- Tane FM106

Surface Mount



PR-20445

Magnetic Contact with Leads

- Screw or adhesive mount
- 18" (46 cm) long wire leads
- Adhesive pads are pre-applied for fast easy installation – they do not need not be removed for screw mounting
- Standard gap: 1-1/4" (32mm)

ORDERING:

PR-20445WH – White

PR-20445BR – Brown

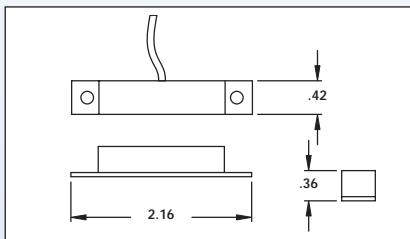
PR-20445WH-M – Extra magnet (10 pack)

PR-20445BR-M – Extra magnet (10 pack)

SPECIFICATIONS:

Switch Type: Form A (SPST) Reed

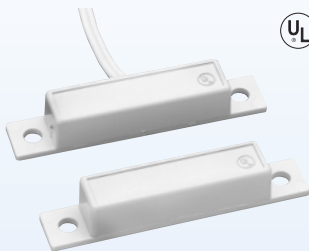
Contact Rating: 100ma @ 28VDC



REPLACES:

- Aleph PS1541
- GRI 110-12
- Nascom N35
- Sentrol 1082-N, 1085
- Tane FM106

Surface Mount



949

Magnetic Contact with Leads

- Screw mount
- External test points standard
- Standard gap: 1-1/4" (32mm)
- Complete with spacers and mounting screws

ORDERING:

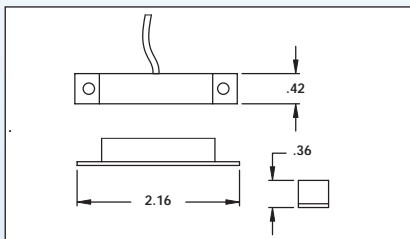
949WH – White

949BR – Brown

SPECIFICATIONS:

Switch Type: Form A (SPST) Reed

Contact Rating: 100ma @ 28VDC



REPLACES:

- Aleph PS1541
- GRI 100-12
- Nascom N35
- Sentrol 1035-N, 1085, 1085-M, 1085-N
- Tane FM106

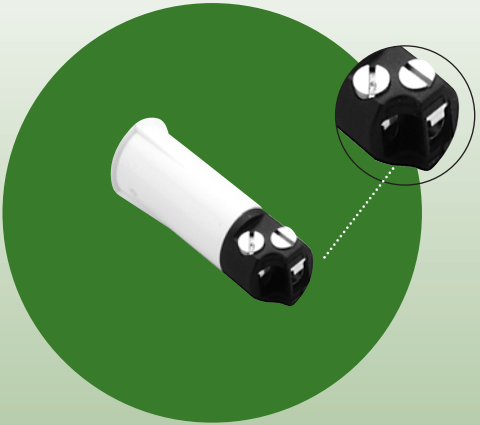
Recessed

Featured Product

Truly one-of-a-kind, Honeywell's Staggered T Series contacts provide you with a whole new level of convenience and flexibility. By staggering the terminals, we discovered a way to fit larger screw terminals without altering the industry-standard 3/8" diameter case size—and without having to use any special screwdrivers. The result? Easier wiring and faster installations.

The innovative design eliminates splicing and soldering, and no special screwdrivers are required. It's the industry standard-sized contact from the company with the highest standards in the industry.

→ Recessed contacts that feature Staggered T terminals begin on page 46.

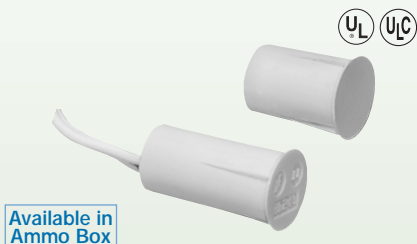


Staggered T **Honeywell Exclusive**

- Staggered T Terminals ensure a secure electrical connection
- Innovative design makes installation simple

Honeywell

Recessed



951WG 3/8" Diameter Miniature Press Fit Magnetic Contact

- With a 3/4" long magnet, the 951WG is ideal for casement windows, sliding windows, and other thin frame applications
- Standard gap: 1-1/4" – the largest gap of any mini 3/8" contact
- 12" leads are standard

ORDERING:

951WG-WH – White

951WG-BR – Brown

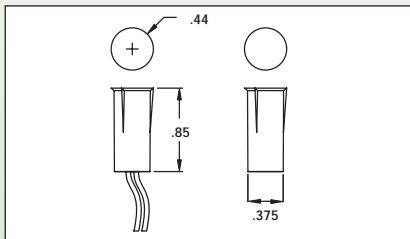
951WG-WH-M – Extra magnet (10 pack)

951WG-BR-M – Extra magnet (10 pack)

SPECIFICATIONS:

Switch Type: Form A (SPST) Reed

Contact Rating: 300ma @ 30VDC



REPLACES:

- ADEMCO PR20451, 944, PR20411, 951, PRO51SP
- Aleph DC-1651, PS-1650, DC-1621-WG
- FBII ZR755R, ZR715R
- Intellisense, MPS9
- GRI 5065, 20RS-12
- Nascom N-175N
- Sentrol 1125
- Tane STB-10, mini-10, TAP-10

Recessed



PRO51BTM **3/8" Stubby Recessed Contact** **with Rare Earth Button Magnet**

- Stubby 3/8" press fit with button magnet fits even the tightest spots
- Powerful rare earth magnet is easy to install with screw or adhesive
- Standard gap: 1/2" (13mm)
- Magnet screw hole is convex for smooth flush fit

ORDERING:

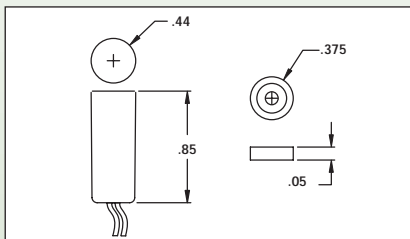
PRO51BTM-WH – White

PROBTM – 10 pack button magnets

SPECIFICATIONS:

Switch Type: Form A (SPST) Reed

Contact Rating: 100ma @ 28VDC



REPLACES:

- GRI N-20RS-12
- Sentrol R-1125
- Tane STB-10DM, Mini-10WG, ATB-10WG

Recessed



MPS99WG **3/8" Stubby Contact** **with Flat Magnet**

- Standard gap: 1-1/4" (32mm)
- 12" (30cm) leads
- Adhesive mounting tape on magnet

ORDERING:

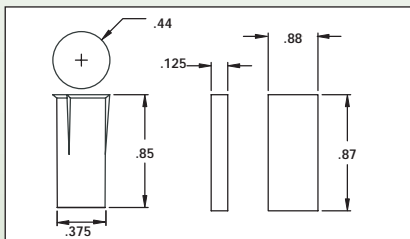
MPS99GW – White

MPS99WB – Brown

SPECIFICATIONS:

Switch Type: Form A (SPST) Reed

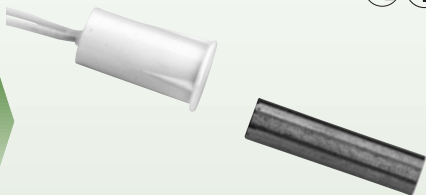
Contact Rating: 300ma @ 30VDC



REPLACES:

- GRI 5065, 5088, 5088RS
- Sentrol R-1125

Recessed



MPS95WG 3/8" Stubby Contact with 1/4" Magnet

- Standard gap: 1-1/4" (32mm)
- 12" (30cm) leads

ORDERING:

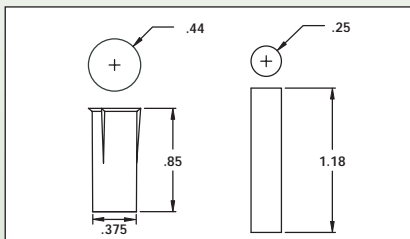
MPS95WGW – White

MPS95WGB – Brown

SPECIFICATIONS:

Switch Type: Form A (SPST) Reed

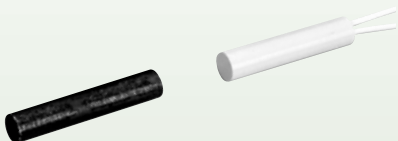
Contact Rating: 300ma @ 30VDC



REPLACES:

- GRI 50-RFIZ

Recessed



PR-20421 Press Fit Magnetic Contact

- 1/4" diameter press fit
- Standard gap: 3/4" (19mm)
- 18" (46cm) long wire leads

ORDERING:

PR20421 – White

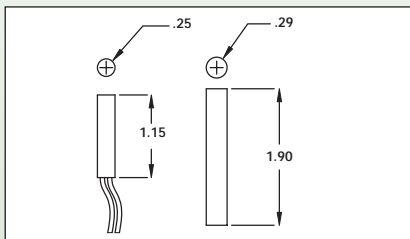
941WH – White with 5' leads

941M – Extra 1/4" bare magnet

SPECIFICATIONS:

Switch Type: Form A (SPST) Reed

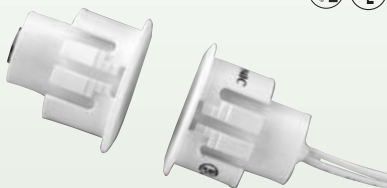
Contact Rating: 100ma @ 28VDC



REPLACES:

- ADEMCO MPS5
- Aleph DC-1611, DC-1631
- GRI 50R-12, 50RF-12
- Sentrol 1055

Recessed



MPS70WG **3/4" Steel Door Contact**

- Standard gap: 1-1/4" (32mm)
- 5/8" (16mm) gap for steel
- 12" (30cm) leads

ORDERING:

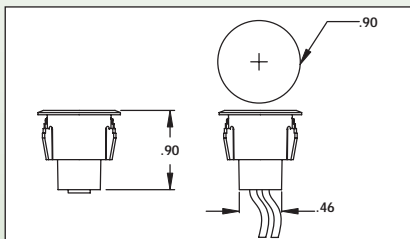
MPS70WGW – White

MPS70WGB – Brown

SPECIFICATIONS:

Switch Type: Form A (SPST) Reed

Contact Rating: 300ma @ 30VDC



REPLACES:

- ADEMCO 947-75
- GRI 180-12WG, 180-12, 180MC-12
- Nascom N-78C
- Sentrol 1078C
- Tane SD-70

Recessed



MPS73WG

3/4" Contact with 3/8" Magnet

- Standard gap: 1-1/4" (32mm)
- 12" (30cm) leads

ORDERING:

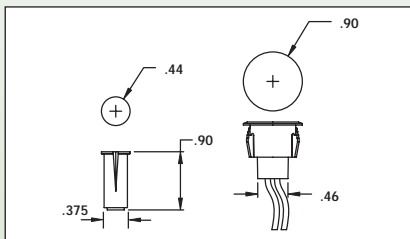
MPS73WGW – White

MPS73WGB – Brown

SPECIFICATIONS:

Switch Type: Form A (SPST) Reed

Contact Rating: 200ma @ 30VDC



REPLACES:

- GRI 120T-12, M5

Recessed



947

1" Steel Door Magnetic Contact

- The clean look of recessed contacts coupled with robust features that meet the requirements of steel doors
- 1" (25mm) diameter with "lock-in" mounting caps
- Standard gap 1/2" (13mm) in steel
- 5' (1.5m) zip cord leads are standard
- Includes 3/8" diameter by 1" long bare magnet

ORDERING:

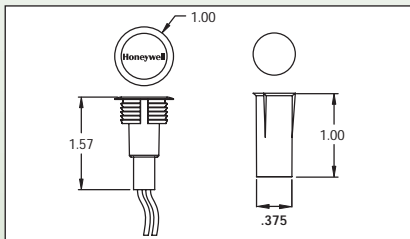
947WH – White

947BR – Brown

SPECIFICATIONS:

Switch Type: Form A (SPST) Reed

Contact Rating: 100ma @ 28VDC



REPLACES:

- Sentrol 1078

Recessed



Available in
Ammo Box

944T 3/8" Magnetic Contact with Screw Terminals

- 3/8" diameter press fit design
- Screw terminals eliminates wire splicing and soldering
- Standard gap: 3/4" (19mm)
- Staggered T Terminals ensure a secure electrical connection

ORDERING:

944T-WH – White

944T-BR – Brown

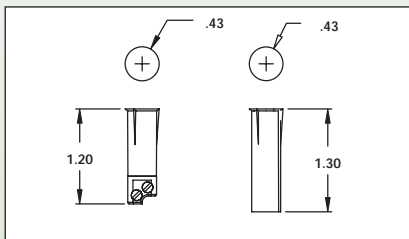
944WH-M – Extra magnet (10 Pack)

944BR-M – Extra magnet (10 Pack)

SPECIFICATIONS:

Switch Type: Form A (SPST) Reed

Contact Rating: 100ma @ 28VDC



REPLACES:

- Aleph DC-3621
- GRI 2020T, 20RS-T
- Sentrol 1125T, 1075
- Tane-3/8T, 318TC

Recessed



944TRE 3/8" Magnetic Contact with Terminals and Rare Earth Magnet

- 3/8" diameter press fit design
- Rare Earth button magnet
- Standard gap: 1/2" (13mm)
- Staggered T Terminals ensure a secure electrical connection

ORDERING:

944TRE-WH – White

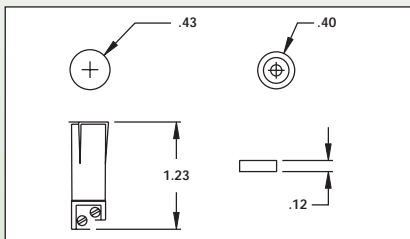
944TRE-BR – Brown

PROBTM – 10 Pack of button magnets

SPECIFICATIONS:

Switch Type: Form A (SPST) Reed

Contact Rating: 100ma @ 28VDC



REPLACES:

- GRI N2020-TWG
- Sentrol R1125T

Recessed



Available in
Ammo Box

944TSP 3/4" Contact with Terminals and 3/8" Magnet

- 3/4" diameter switch for easier wiring; supplied with 3/8" diameter magnet
- Standard gap: 3/4" (19mm)
- Staggered T terminals ensure a secure electrical connection

ORDERING:

944TSP-WH – White

944TSP-BR – Brown

944TSP-GY – Grey

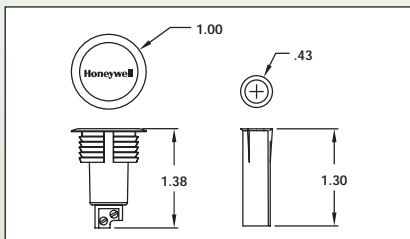
944WH-M – Extra magnet (10 Pack)

944BR-M – Extra magnet (10 Pack)

SPECIFICATIONS:

Switch Type: Form A (SPST) Reed

Contact Rating: 100ma @ 28VDC



REPLACES:

- GRI 120T-12, 4473, M5

Recessed



Available in
Ammo Box

947-75T

Steel Door Magnetic Contact with Terminals

- 3/4" recessed with 3/4" magnet and terminals
- 1/2" gap in steel
- Staggered T terminals ensure a secure electrical connection

ORDERING:

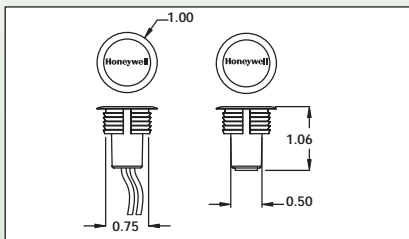
947-75TWH – White

947-75TBR – Brown

SPECIFICATIONS:

Switch Type: Form A (SPST) Reed

Contact Rating: 100ma @ 28VDC



REPLACES:

- GRI 8080-T, 8080TMC, 150R5-T
- Sentrol 1078CT
- Tane 3/4 TC

Recessed



Available in
Ammo Box

956RPT Mini Roller Plunger Contact with Terminals

- Shorter body for easier recess fit
- Full 180° activation
- Staggered T terminals ensure a secure electrical connection

ORDERING:

956RPT-WH – White

956RPT-BR – Brown

956WH-B – With 18" (46cm) leads white

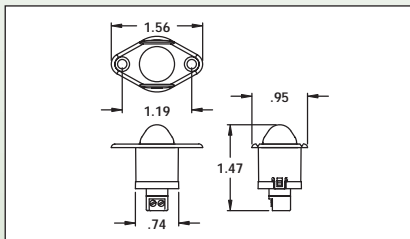
956BR-B – With 18" (46cm) leads brown

956-2WH – SPDT with 18" leads

SPECIFICATIONS:

Switch Type: Form A (SPST) Reed

Contact Rating: 100ma @ 28VDC



REPLACES:

- GRI DS-01T
- Sentrol 3005, 3008
- Tane RB-32

Recessed



Available in
Ammo Box

955PST Mini Plunger Contact with Terminals

- Broad face plunger distributes impact more evenly
- Staggered T terminals ensure a secure electrical connection

ORDERING:

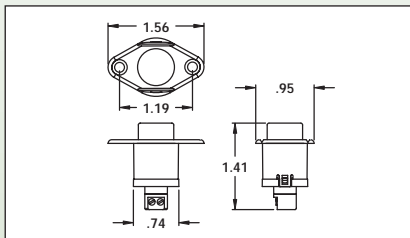
955PST-WH – White

955PST-BR – Brown

SPECIFICATIONS:

Switch Type: Form A (SPST) Reed

Contact Rating: 100ma @ 28VDC



REPLACES:

- GRI PBF-100T
- Sentrol 3015
- Tane PB-52T

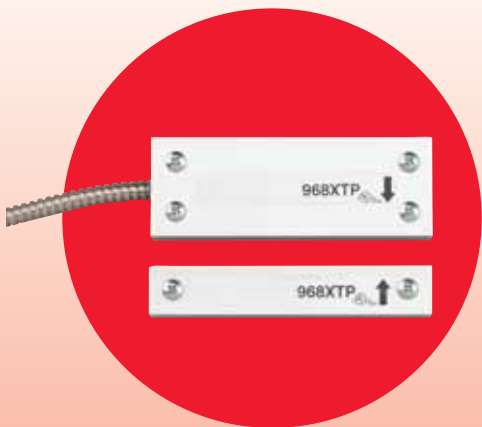
Commercial

Featured Product

During lightning strikes or power surges, voltage can flow through the reed switch of a magnetic contact—fusing the switch and rendering windows and doors unprotected. For the surge protection you need, look to Honeywell's robust XTP contacts.

Look for contacts featuring the "XTP" symbol throughout this section!



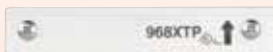


Commercial
968XTP Shown

Commercial



XTP



968XTP **XTP High Security Switch**

- Defeat-resistant from external magnetic tampering
- Includes tamper switch to notify of removal
- XTP protection (up to 2400VDC)
- Suitable for Indoor/Outdoor use
- Epoxy sealed for protection from moisture and corrosion
- 3' (91cm) stainless steel armored cable

ORDERING:

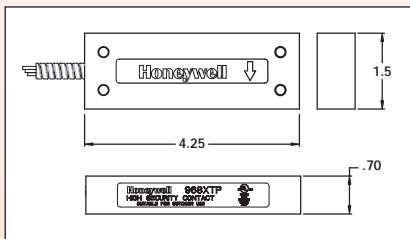
968XTP – High Security Balanced Switch

SPECIFICATIONS:

Switch Type: Form C (SPDT) Reed

Contact Rating: 125ma @ 24VDC

250ma @ 12VDC



Patent # 4,945,340

REPLACES:

- Sentrol 2507AH-L, 2707A-L

Commercial



XTP

960 XTP Surface Mount Magnetic Contact

- XTP contacts withstand surges up to 2400VDC
- The toughest commercial contact ever developed
- Rugged aluminum housing
- Completely immersion proof (epoxy sealed)
- 3' (91cm) armored cable is standard
- Wide gap of 2-1/2" (64mm) is standard

ORDERING:

960 – SPST Switch (Form A)

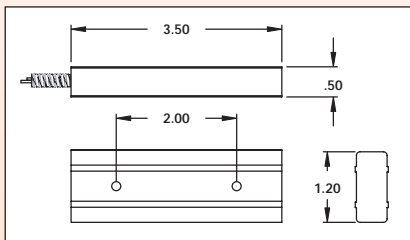
960-2 – SPDT Switch (Form C)

SPECIFICATIONS:

Switch Type: Form A (SPST) Reed (960)

Switch Type: Form C (SPDT) Reed (960-2)

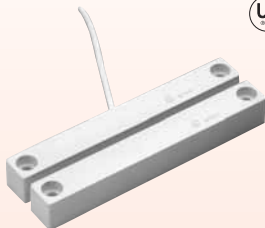
Contact Rating: 100ma @ 28VDC



REPLACES:

- GRI 4400
- Nascom 505A
- Sentrol 2505A

Commercial



XTP

7945

XTP Surface Mount Magnetic Contact with Leads

- XTP contacts withstand surges up to 2400VDC
- 6' (1.8m) CLII cable is standard
- Completely immersion proof (epoxy sealed)
- Wide gap of 2-1/2" (64mm) is standard

ORDERING:

7945WH – White

7945BR – Brown

7945GY – Grey

7945-2GY – SPDT Switch (Form C)

7945WH-M – Spare magnet

7945BR-M – Spare magnet

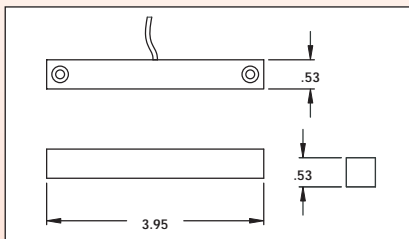
7945GY-M – Spare magnet

SPECIFICATIONS:

Switch Type: Form A (SPST) Reed (7945)

Switch Type: Form C (SPDT) Reed (7945-2)

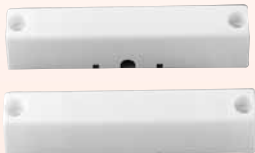
Contact Rating: 100ma @ 28VDC



REPLACES:

- Amseco AMS37
- GRI 400, 410
- Sentrol 1045

Commercial



MPS80 Surface Mount Contact with Terminals

- Standard gap 2" (51mm)
- Industrial surface mount
- Includes spacers and mounting screws

ORDERING:

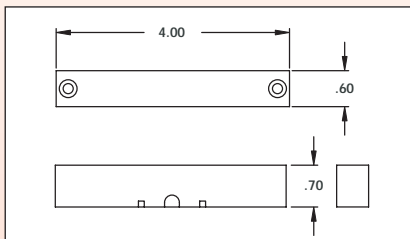
MPS80WGW – White

MPS80WGB – Brown

SPECIFICATIONS:

Switch Type: Form A (SPST) Reed

Contact Rating: 300ma @ 30VDC



REPLACES:

- Amseco AMS37
- GRI 400, 410
- Sentrol 1045

Commercial



957

Overhead Door Magnetic Contact

- Rugged cast aluminum housing for protecting magnet
- Armored cable standard on every model (18") (46cm)
- Standard gap: 1" (25mm) minimum
- Unobtrusive design resists damage in high traffic areas

ORDERING:

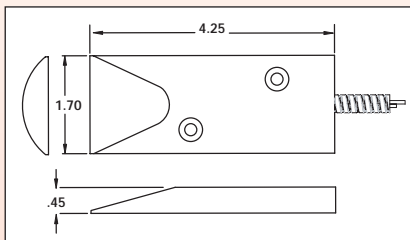
957 – Standard gap 1" (25mm) minimum

957W – Wide gap 2" (51mm) minimum

SPECIFICATIONS:

Switch Type: Form A (SPST) Reed

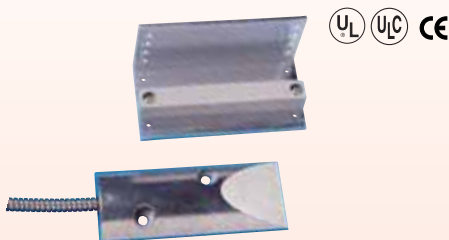
Contact Rating: 100ma @ 28VDC



REPLACES

- Sentrol 2205A-L, 2205AO-L

Commercial



958

Overhead Door Magnetic Contact

- Adjustable magnet with L bracket
- 24" (61cm) armored cable is standard
- Standard gap: 2-3/8" (60 mm) minimum
- Epoxy sealed for protection from moisture and impact
- Rugged "Shock Absorber" design protects reed against flex or damage to housing

ORDERING:

958 – SPST Switch (Form A)

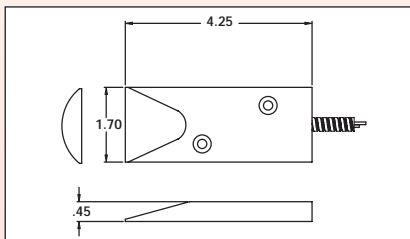
958-2 – SPDT Switch (Form C)

SPECIFICATIONS:

Switch Type: Form A (SPST) Reed (958)

Switch Type: Form C (SPDT) Reed (958-2)

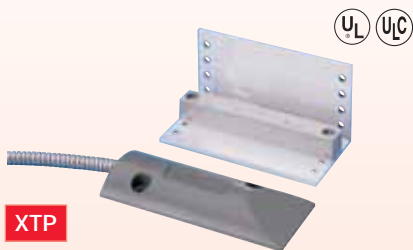
Contact Rating: 100ma @ 28VDC



REPLACES:

- Aleph PS-2023
- Amseco ODC59A
- GRI 4532/4532L
- Sentrol 2202AU-L, 2202A-L, 2204AU-L

Commercial



959

XTP Overhead Door Contact

- Exceeds UL transient test withstanding surges up to 2400 Volts
- The standard for OHD contact applications
- Adjustable magnet with L bracket
- Standard gap: 2" (51mm)

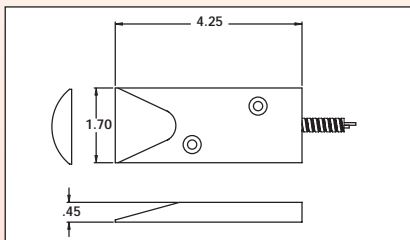
ORDERING:

959 – Overhead Door Contact

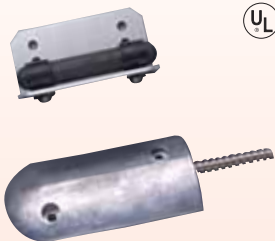
SPECIFICATIONS:

Switch Type: Form A (SPST) Reed

Contact Rating: 100ma @ 28VDC



Commercial



MPS51C Overhead Door Contact

- Standard gap 2" (51mm)
- Form C
- 24" (61cm) armored cable
- Adjustable magnet bracket

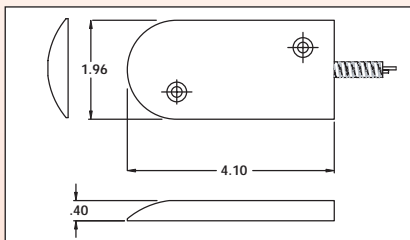
ORDERING:

MPS51C – Overhead Door Contact

SPECIFICATIONS:

Switch Type: Form C (SPDT) Reed

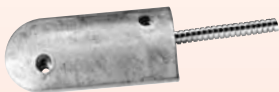
Contact Rating: 300ma @ 30VDC



REPLACES:

- GRI 4532/4532L
- Sentrol 2202AU, 2202A

Commercial



MPS52 Overhead Door Contact

- Standard gap 2" (51mm)
- 24" (61cm) armored cable
- Adjustable magnet

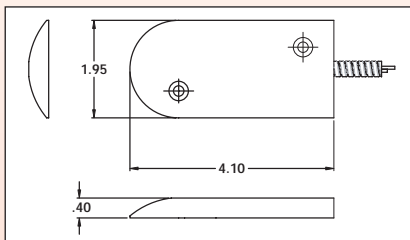
ORDERING:

MPS52 – Overhead Door Contact

SPECIFICATIONS:

Switch Type: Form A (SPST) Reed

Contact Rating: 300ma @ 30VDC



REPLACES:

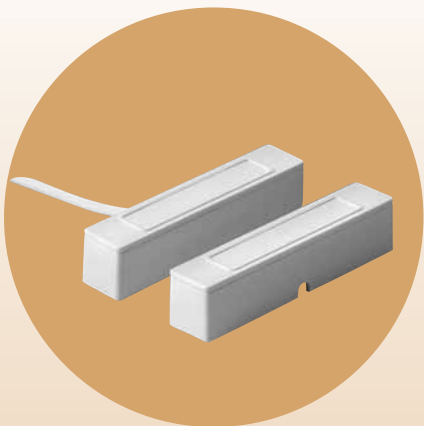
- Amseco ODC59A
- GRI 4532/4532L
- Sentrol 2202AU, 2202A

V-Plex

Featured Product

Honeywell's patented V-Plex polling loop technology literally defines price and performance on a simple pair of wires. By utilizing only two wires instead of four, V-Plex offers significant advantages over conventional four-wire installations — providing economical expansion of peripheral devices and point identification to your central monitoring station. In addition, reduced power consumption by V-Plex devices virtually eliminates the need for auxiliary power supplies.

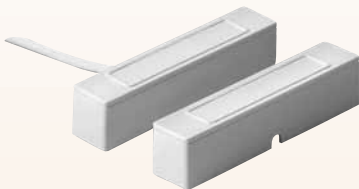
V-Plex offers a labor and time-saving maintenance feature that gives you the ability to diagnose and pinpoint defects while in maintenance mode.



V-Plex Contacts
Honeywell Exclusive
Patent 6,721,283

Honeywell

V-Plex



4939SN

V-Plex Addressable Surface Mount Contact

- Programmable surface mount contact
- Compatible with control panels with serial number device capabilities for multiplex polling loop
- Standard gap: 1-1/4" (32mm)
- 5' (1.5m) CLII jacketed cable
- Epoxy sealed for protection from moisture and impact
- Programmed from VISTA keypad or learn mode

ORDERING:

4939SN-WH – White

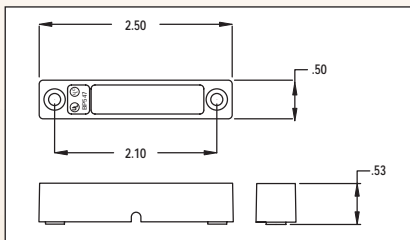
4939SN-BR – Brown

4939SN-GY – Grey

SPECIFICATIONS:

Switch Type: Form A (SPST) Reed

Contact Rating: 100ma @ 28VDC

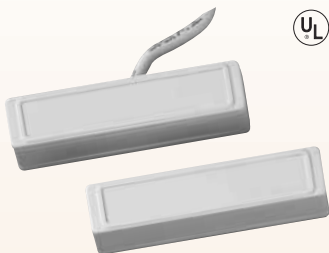


Patent # 6,721,283

Honeywell Exclusive:

Patent polling loop technology

V-Plex



4945SN

V-Plex Addressable Surface Mount Contact

- Mini-surface style with snap on cover to conceal mounted screws
- Standard gap: 3/4" (19mm)
- 5' (1.5m) CL II jacket cable
- Epoxy sealed for protection from moisture and impact
- Programmed from VISTA keypad

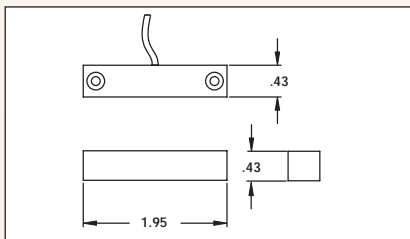
ORDERING:

4945SN-WH – White

SPECIFICATIONS:

Switch Type: Form A (SPST) Reed

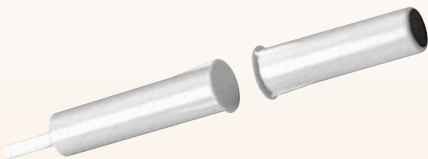
Contact Rating: 100ma @ 28VDC



Patent # 6,721,283

Honeywell Exclusive:

Patent polling loop technology



4944SN V-Plex Addressable Recessed Mount Contact

- Popular press fit design conceals reed, Point ID module and magnet in just 3/8" diameter case
- For use with VISTA controls supporting Point ID serial number sensors
- Standard gap: 3/4" (19mm) end-to-end
- Factory installed 5' (1.5m) zip cord lead saves time

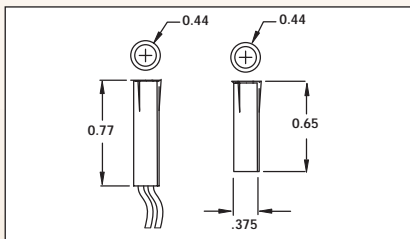
ORDERING:

4944SN-WH – White

SPECIFICATIONS:

Switch Type: Form A (SPST) Reed

Contact Rating: 100ma @ 28VDC

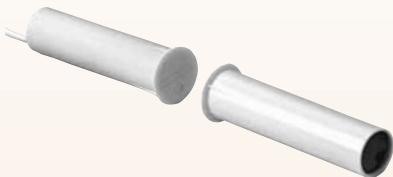


Patent # 6,721,283

Honeywell Exclusive:

Patent polling loop technology

V-Plex



4191SN

V-Plex Recessed Magnetic Contact

- Programmable recessed contact
- Compatible with control panels with serial number device capabilities for multiplex polling loop
- Press fit design in 1/2" (12mm) diameter case
- Factory installed 5' (1.5m) zip cord leads saves time
- Standard gap: 7/8" (22mm) end-to-end

ORDERING:

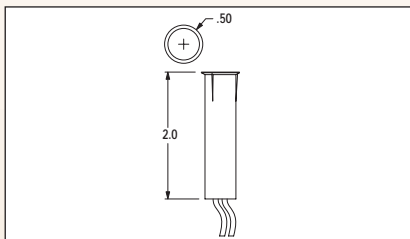
4191SN-WH – White

4191WA – 3/4" (19mm) adapter for steel doors

SPECIFICATIONS:

Switch Type: Form A (SPST) Reed

Contact Rating: 100ma @ 28VDC

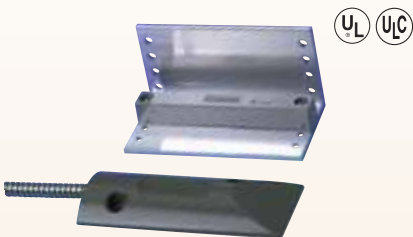


Patent # 6,721,283

Honeywell Exclusive:

Patent polling loop technology

V-Plex



4959SN V-Plex Addressable Overhead Door Contact

- Rugged aluminum housing and adjustable L bracket type magnet
- Standard gap: 2" (51mm)
- 24" (61cm) armored cable
- Epoxy sealed for protection from moisture and impact
- Programmed from VISTA keypad

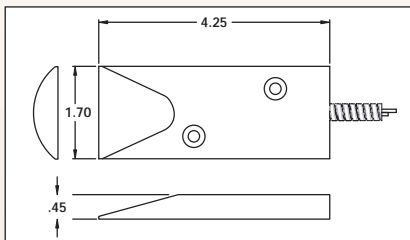
ORDERING:

4959SN – V-Plex Addressable
Overhead Door Contact

SPECIFICATIONS:

Switch Type: Form A (SPST) Reed

Contact Rating: 100ma @ 28VDC



Patent # 6,721,283

Honeywell Exclusive:

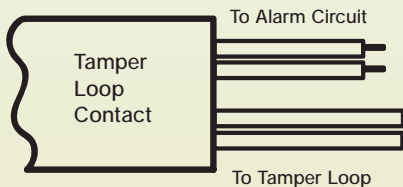
Patent polling loop technology

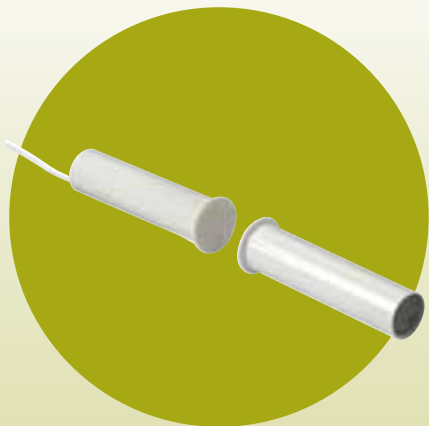
Tamper Loop

Featured Product

By adding a special tamper loop to the existing alarm circuit, this four-wired configuration makes it difficult for potential intruders to tamper with the system—providing an added level of security.

This next section highlights our Tamper Loop magnetic contacts.





Tamper Loop Contacts
944CE Shown

Tamper Loop

CE



944CE-WH 8mm Diameter Recessed Contact with Tamper Loop

- 3m (10ft.) jacketed leads
- Standard gap 25mm (1.0")
- Tamper Loop for added security
- Packaged 5 per bag

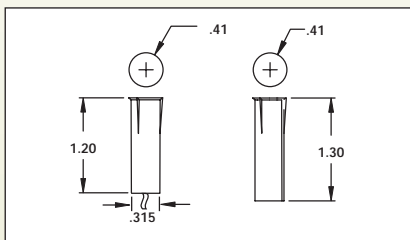
ORDERING:

944CE-WH – White (5 pack)

SPECIFICATIONS:

Switch Type: Form A (SPST) Reed

Contact Rating: 100ma @ 28VDC



Tamper Loop



PAL-CE-WH Surface Mount Contact with Tamper Loop

- 3m (10ft.) jacketed leads
- Standard gap 28mm (1-1/8")
- Tamper Loop for added security
- Packaged 5 per bag

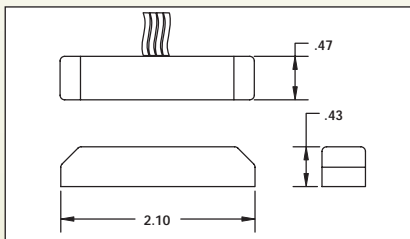
ORDERING:

PAL-CE-WH – White (5 pack)

SPECIFICATIONS:

Switch Type: Form A (SPST) Reed

Contact Rating: 100ma @ 28VDC



Tamper Loop

CE



EMPS-10

8mm Diameter Recessed Contact with Tamper Loop

- 30cm (12") lead length
- Standard gap: 12mm (1/2")
- Tamper Loop for added security
- Package 1 per bag

ORDERING:

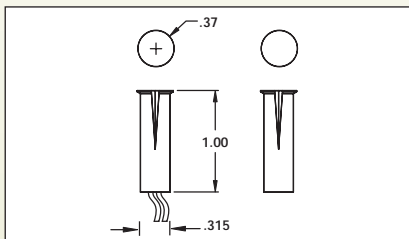
EMPS-10W – White

EMPS-10B – Brown

SPECIFICATIONS:

Switch Type: Form A (SPST) Reed

Contact Rating: 500ma @ 50VDC



Tamper Loop

EN50131-1 **CE**



EMPS-50 Overhead Door Contact with Tamper Loop

- 62cm (24") armored cable
- Standard gap: 5.5cm (2")
- Complies with EN50131-1 (Grade 2, Class II)
- Rugged aluminum housing
- Tamper Loop for added security
- Package 1 per bag

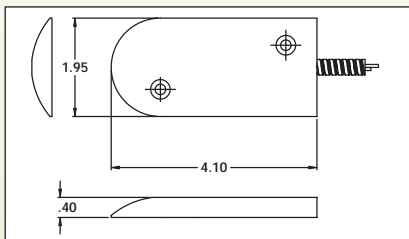
ORDERING:

EMPS-50 – Overhead Door Contact

SPECIFICATIONS:

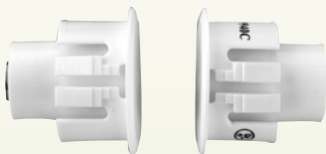
Switch Type: Form A (SPST) Reed

Contact Rating: 500ma @ 50VDC



Tamper Loop

CE



EMPS-70

20mm Diameter Recess Contact with Tamper Loop

- 30cm (12") lead length
- Standard gap: 20mm (3/4")
- Tamper Loop for added security

ORDERING:

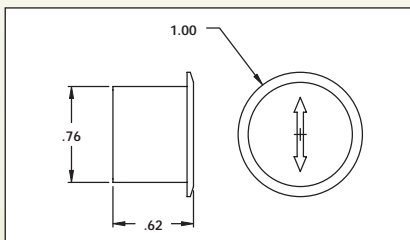
EMPS-70W – White

EMPS-70B – Brown

SPECIFICATIONS:

Switch Type: Form A (SPST) Reed

Contact Rating: 500ma @ 50VDC



Tamper Loop

EN50131-1 **CE**



EMPS-75

20mm Diameter Recessed Contact with Terminals

- Complies with EN50131-1 (Grade 1, Class II)
- Standard gap: 20mm (3/4")
- Tamper Loop for added security

ORDERING:

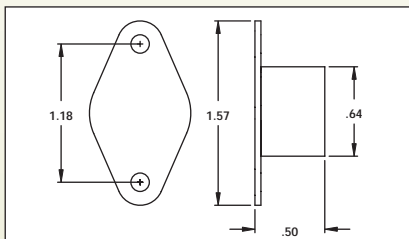
EMPS-75W – White

EMPS-75B – Brown

SPECIFICATIONS:

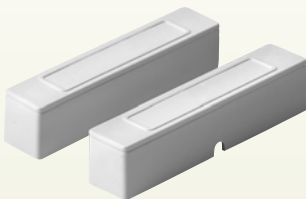
Switch Type: Form A (SPST) Reed

Contact Rating: 500ma @ 50VDC



Tamper Loop

EN50131-1 **CE**



EMPS-85 Surface Mount Contact with Terminals

- Complies with EN50131-1 (Grade 1, Class II)
- Standard gap: 20mm (3/4")
- Tamper Loop for added security

ORDERING:

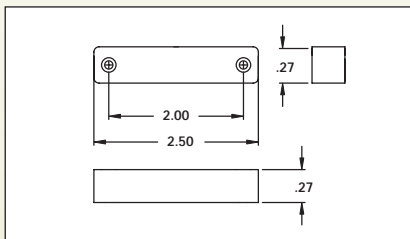
EMPS-85W – White

EMPS-85B – Brown

SPECIFICATIONS:

Switch Type: Form A (SPST) Reed

Contact Rating: 500ma @ 50VDC



GLOSSARY

Break Gap (Break Distance)

- The minimum distance between separated mating contacts in their fully open position.

DPDT (Double-Pole Double Throw) - Switches, which make and break two separate circuits. This circuit provides a normally open and normally closed contact for each pole.

EOLR - An End-of-Line Resistor supervises the wiring between the alarm panel and the switch. When properly placed in the circuit, EOL resistors prevent wire tampering on normal switches.

Normally Open (NO) - Switch that must be actuated to pass current.

Normally Closed (NC) - Switch that passes current until actuated.

Pole - The number of completely

separate circuits that can pass through a switch at one time. A single pole switch can control only one circuit at a time. A double pole switch can control two independent circuits at the same time. The number of poles is completely independent of the number of throws and number of breaks.

SPDT (Single-Pole Double-Throw)
(Form C) - Switch which may either make or break a circuit, depending on how it is wired.

SPST (Single-Pole Single-Throw)
(Form A) - Switch with only one moving and one stationary contact. Available either normally open (NO) or normally closed (NC).

Standard Gap (Make Distance)
- Refers to the minimum distance required before the contact circuit restores to its normal state (i.e. NO or NC).

Conversion Chart

To Convert From	To	Multiply By
Inches (in)	Millimeters (mm)	25.4
Inches (in)	Centimeters (cm)	2.54
Millimeters (mm)	Inches (in)	0.03937
Centimeters (cm)	Inches (in)	0.3937
Feet (ft)	Meter (m)	0.3048
Meter (m)	Feet (ft)	3.2808

1 mm = 0.04 in
1 cm = 0.39 in
1 in = 2.54 cm
1 in = 25.4 mm

Honeywell