

Installation and Setup Guide

General

The Communication Module uses an internal multi band cellular antenna. In most cases, this antenna will provide sufficient quality of signal (QOS) for a successful installation.

The Honeywell Home Indoor/Outdoor Fixed Length Antenna should be used in installations where moving the antenna to a higher point will provide a better quality of signal.

Installation Note: For the best QOS, maintain at least 12 inches of clearance between the communication module and steel I-beams, HVAC ducts, metal studs, steel roofs, exterior walls with metalized insulation or aluminum siding and other large metal objects.

Kit Includes: Multi band cellular antenna with double sided adhesive
Integrated coax cable with TS9 connector
Antenna mounting hardware pack: 2 cable clamps with screws and anchors

Compatible Modules: Lyric-3G, Lyric-CDMA, Lyric-3GC, LYRICLTE-A, LYRICLTE-C, LYRICLTE-V

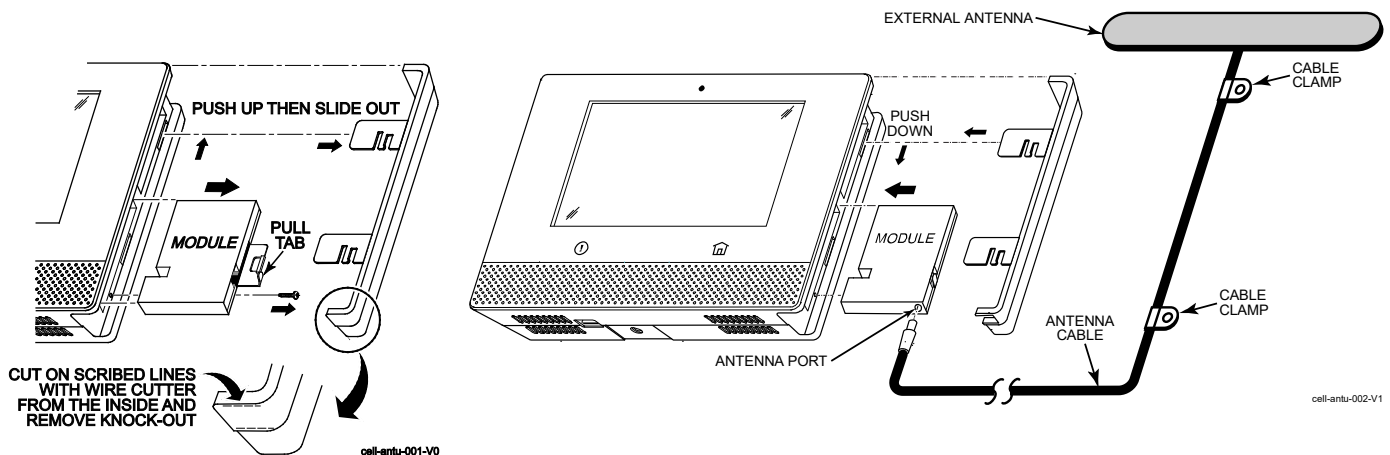
Indoor/Outdoor Antenna

The antenna is waterproof, and can be installed indoors or outdoors. The antenna should be mounted on a glass, plastic, drywall, masonry or wood surface vertically, while maintaining 12 inches of clearance from large metal objects. Do not install on a metal surface.

Install the antenna as follows:


1. Find a suitable location for mounting the antenna vertically.
2. Refer to the radio communication module installation guide for Replacing the Module.
3. Using wire cutters, remove the knock-out in the plastic frame as shown below.
4. Plug the TS9 end of the cable into the module's external antenna port and route the cable.
5. Refer to the Cellular Information screen on the Lyric controller to make sure the displayed QOS is acceptable. See the radio communication module installation guide for specific ranges.
6. Permanently mount the antenna vertically using the double-sided self adhesive and the included hardware.

Lyric-3G / Lyric-3GC / Lyric-CDMA / Lyric LTE Series Communication Module



Indoor/Outdoor Fixed Length Antenna Installation

Specifications

Antenna			
Type	Multiband, dipole	VSWR	<2:1
Bands	700, 850, 900, 1800, 1900, & 2100 MHz	Dimensions / Weight	106 x 15 x 6.7mm / 40g
Polarization	Linear	Cover	PVC black
Gain (Peak)	1dBi	Cable Type / Length	RG-174 / 3m
Impedance	50 Ohms	Environmental	Waterproof IP67, - 40°C to +85°C
Input Power (Max.)	5W	Connector Type	TS9 straight SMA 

RF Exposure

Warning – The internal or external antenna(s) used with this product must be installed to provide a separation distance of at least 7.8 in. (20 cm) from all persons and must not be co-located or operating in conjunction with any other antenna or transmitter except in accordance with FCC multi-transmitter product procedures.

Mise en Garde

Exposition aux Fréquences Radio: L'antenne (s) utilisée pour cet émetteur doit être installée à une distance de séparation d'au moins 7,8 pouces (20 cm) de toutes les personnes.

IMPORTANT NOTE ABOUT EXTERNAL ANTENNAS

If an external cellular radio antenna is used, the antenna may be installed or replaced **ONLY** by a professional installer.

TO THE INSTALLER

Lyric-3G, Lyric-3GC

The external antenna must not exceed a maximum directional gain (including cable loss) of 6.0 dBi at 850 MHz and 2.5 dBi at 1900 MHz. Under no conditions may an antenna gain be used that would exceed the ERP and EIRP power limits as specified in Part 22H and 24E and 27, and IC RSS-130, RSS-132, RSS-133, and RSS-139.

Lyric-CDMA

The external antenna must not exceed a maximum directional gain (including cable loss) of 9.3 dBi at 850 MHz and 8.2 dBi at 1900 MHz. Under no conditions may an antenna gain be used that would exceed the ERP and EIRP power limits as specified in Part 22H and 24E and 27.

LYRICLTE-A, LYRICLTE-C

This device is to be used in mobile or fixed applications only. For mobile and fixed operating configurations, the antenna gain, including cable loss, must not exceed 3.25 dBi (US) or 0.6dBi (Canada) at 850 MHz, 5.5 dBi at 1700 MHz, 2.5dBi at 1900 MHz for satisfying RF exposure compliance. Under no conditions may an antenna gain be used that would exceed the ERP and EIRP power limits as specified in Part 22H and 24E and 27, and IC RSS-130, RSS-132, RSS-133, and RSS-139.

LYRICLTE-V

This device is to be used in mobile or fixed applications only. For mobile and fixed operating configurations, the antenna gain, including cable loss, must not exceed 7.31 dBi at 780 MHz, 7.35 dBi at 1700 MHz for satisfying RF exposure compliance. Under no conditions may an antenna gain be used that would exceed the ERP and EIRP power limits as specified in Part 22H and 24E and 27.

The Honeywell Home Trademark is used under license from Honeywell International Inc.

This product is manufactured by Resideo Technologies, Inc. and its affiliates.



800-23100C 3/17 Rev C

resideo

2 Corporate Center Drive, Suite 100
P.O. Box 9040, Melville, NY 11747
© 2020 Resideo Technologies, Inc.
www.resideo.com