

# HOME THEATER AND HDMI ACCESSORIES



# HOME THEATER AND HDMI ACCESSORIES

Since 1998, **DataComm Electronics** has been pioneering innovative solutions for structured wiring. Industry-wide, we are known as the manufacturer who listens to customers, delivering the reliable and affordable products needed to boost efficiency, reduce costs and meet the demands of an ever-evolving marketplace. At DataComm, we are passionate about our industry and proud of the products we develop and deliver.

By keeping our designs simple and installer-friendly, DataComm Electronics has become an industry recognized brand name and a leading manufacturer of home theater and HDMI accessories. Hiding wires

that tail flat screen TVs, cable boxes and other home theater devices has never been easier. We understand that everyone's home is unique, and with our vast selection of cable plates you will certainly find a product to fit every home theater installation, no matter how simple or complex it may be. DataComm's new line of HDMI cables have the ability to transmit high quality HDMI signals with true high speed and performance.

For more information not found in this catalog, and to view our complete line of products, please visit our website at [www.DataCommElectronics.com](http://www.DataCommElectronics.com).

————— DataComm Electronics, Inc. • 888.223.7977 • [www.DataCommElectronics.com](http://www.DataCommElectronics.com) —————



## Recessed Low Voltage Cable Plates

PART #	DESCRIPTION
45-0001-**	1-Gang: BK, BR, IV, LA, WH
45-0002-**	2-Gang: BK, BR, IV, LA, WH
45-0003-**	3-Gang: BK, BR, IV, LA, WH

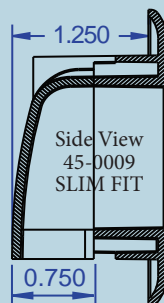
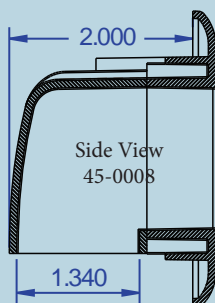
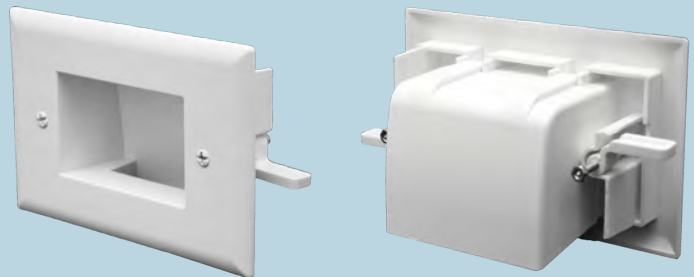
- Available in 1-gang, 2-gang and 3-gang
- Available in 5 colors
- Can be installed upright or upside down
- Designed to be used with 1-gang, 2-gang and 3-gang low voltage mounting brackets made by any major manufacturer



This product is patent protected by U.S. Patent numbers: 7390964, D553475, and D554475.

## Easy Mount Low Voltage Cable Plate

PART #	DESCRIPTION
45-0008-**	BK, IV, LA, WH
45-0009-**	Slim Fit: BK, IV, LA, WH



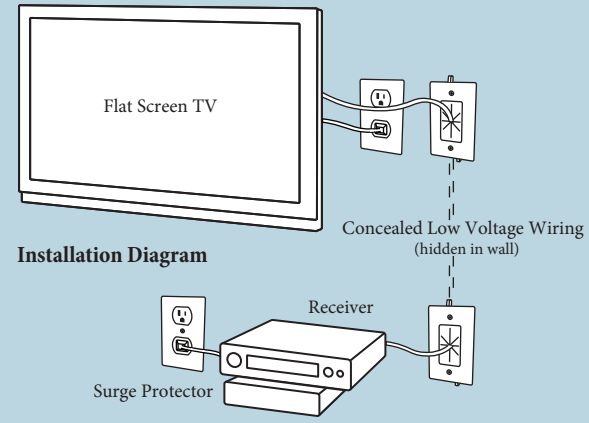
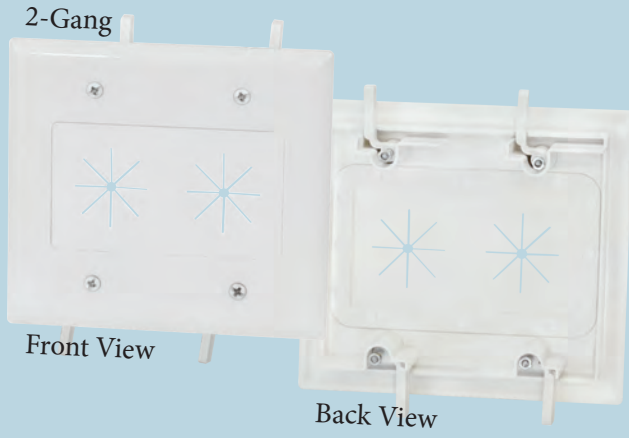
- Conceal multiple AV cables behind your flat panel TV
- Can be installed upright or upside down
- Mounting wings are molded into the plate and fasten tightly against the back of the drywall
- Slim Fit size (45-0009) is designed for applications where the wall cavity is 3/4" to 1" in depth
- Available in 4 colors
- Available in 2 sizes



This product is patent protected by U.S. Patent number: 7390964.

**Cable Plate with Flexible Opening**

PART #	DESCRIPTION
45-0014-BK	1-Gang, Black
45-0014-IV	1-Gang, Ivory
45-0014-LA	1-Gang, Lite Almond
45-0014-WH	1-Gang, White
45-0015-BK	2-Gang, Black
45-0015-IV	2-Gang, Ivory
45-0015-LA	2-Gang, Lite Almond
45-0015-WH	2-Gang, White



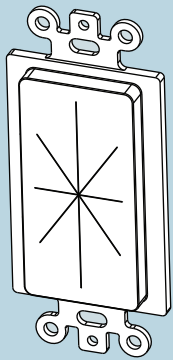
- Allows you to pass low voltage cables through the wall while keeping the opening in the wall covered
- Perfect for eliminating connections at the wall
- 1-gang holds up to 6 cables
- 2-gang holds up to 12 cables
- Available in 4 colors and 2 sizes

- Mounting wings are molded into the cable plate and fasten tightly against the back of the drywall
- No additional parts necessary


 This product is patent protected by U.S. Patent number: 7495171.

**Décor Flexible Insert**

PART #	DESCRIPTION
45-0016-WH	Décor Insert, White

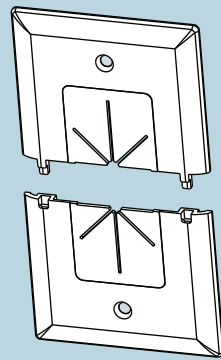


- Can be installed with any manufacturer's décor style wall plate
- Allows you to pass low voltage cables through the wall while keeping the opening in the wall covered
- Perfect for eliminating connections at the wall
- Holds up to 6 cables


 This product is patent protected by U.S. Patent number: 7495171.

**Flexible Split-Plate**

PART #	DESCRIPTION
45-0017-WH	1-Gang, White



- Designed to allow additional cables to be added without disconnecting existing cables
- Install top and bottom half of cable plate to a low voltage mounting bracket
- Allows you to pass low voltage cables through the wall while keeping the opening in the wall covered
- Perfect for eliminating connections at the wall
- Holds up to 6 cables

 This product is patent protected by U.S. Patent number: 7495171.

**Flat Panel TV Cable Organizer Kit with Duplex Power Solution**

PART #	DESCRIPTION
45-0024-WH	Duplex Receptacle, White



**Parts Included:**

- Recessed Low Voltage Mid-Size Plate
- 15 Amp/125 Volt Tamper Resistant Duplex Receptacle
- Recessed Low Voltage Cable Plate with Straight Blade Inlet
- 2 Electrical Outlet Boxes
- 4 Screws per Outlet Box
- 6 Ft. 16/2 with Ground Cord Set with 360° Rotating Head

**Flat Panel TV Cable Organizer Kit with Duplex Surge Power Solution**

PART #	DESCRIPTION
45-0028-WH	Duplex Surge Suppressor, White



**Parts Included:**

- Recessed Low Voltage Mid-Size Plate
- 15 Amp/125 Volt Duplex Surge Suppressor\*
- Recessed Low Voltage Cable Plate with Straight Blade Inlet
- 2 Electrical Outlet Boxes
- 4 Screws per Outlet Box
- 6 Ft. 16/2 with Ground Cord Set with 360° Rotating Head



**Features of the 45-0024-WH & 45-0028-WH:**

- Low profile design fits behind the industry's thinnest mounts and TV's
- Conceal multiple AV cables behind your flat panel TV
- Outlet boxes included
- Male end of extension cord has a 360° rotating flat head for easy access to any outlet
- Female end of extension cord is recessed completely into the wall when plugged into the straight blade inlet
- Flexible screen closes the interior opening of both the Mid-Size Plate and the Straight Blade Inlet (shown on next page beneath 45-0081)
- Metal mounting wings are molded into the media plate and fasten tightly against the back of the drywall for a quick and easy installation

**Additional Features of the 45-0028-WH (Surge Suppressor only):**

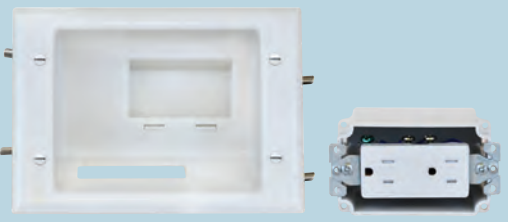
- 15 Amp/125 Volt duplex surge receptacle\*
- Maximum surge current - 15,000 amps
- Clamping Response Time - 1 nanosecond
- Hot/Neutral, Hot/Ground, Neutral/Ground
- Total maximum surge dissipation - 480 joules



These products are patent protected by U.S. Patent numbers: D553475, D554475 and 7390964.  
\*UL Recognized Component.

**Recessed Low Voltage Mid-Size Plate with Duplex Receptacle**

PART #	DESCRIPTION
45-0071-WH	Duplex Receptacle, White



Mid-Size Plate Dimensions: 5.0" H x 7.0" W

- Features of the 45-0071-WH & 45-0081-WH:**
- Low profile design fits behind the industry's thinnest mounts and TV's
  - Conceal multiple AV cables behind your flat panel TV
  - 15 Amp/125 Volt duplex receptacle (45-0071-WH receptacle is tamper resistant)
  - Outlet box included
  - Flexible screen closes the interior opening of the Mid-Size Plate
  - Metal mounting wings are molded into the media plate and fasten tightly against the back of the drywall
  - Quick and easy to install
  - No additional parts necessary

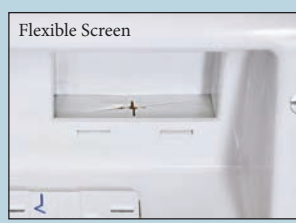
**Recessed Low Voltage Mid-Size Plate with Duplex Surge Suppressor**

PART #	DESCRIPTION
45-0081-WH	Duplex Surge Suppressor, White



Mid-Size Plate Dimensions: 5.0" H x 7.0" W

- Additional Features of the 45-0081-WH Surge Suppressor:**
- 15 Amp/125 Volt duplex surge receptacle\*
  - Maximum surge current - 15,000 amps
  - Clamping Response Time - 1 nanosecond
  - Hot/Neutral, Hot/Ground, Neutral/Ground
  - Total maximum surge dissipation - 480 joules



Flexible screen covers the opening in the following products:

- › 45-0024-WH
- › 45-0028-WH
- › 45-0071-WH
- › 45-0081-WH

**Recessed Low Voltage Media Plate with Duplex Receptacle**

PART #	DESCRIPTION
45-0031-WH	Duplex Receptacle, White



Media Plate Dimensions: 8.1" H x 7.6 W"

- Features of the 45-0031-WH & 45-0041-WH:**
- Low profile design fits behind the industry's thinnest mounts and TV's
  - Conceal multiple AV cables behind your flat panel TV
  - 15 Amp/125 Volt duplex receptacle
  - Outlet box included
  - Metal mounting wings are molded into the media plate and fasten tightly against the back of the drywall
  - Quick and easy to install
  - No additional parts necessary

**Recessed Low Voltage Media Plate with Duplex Surge Suppressor**

PART #	DESCRIPTION
45-0041-WH	Duplex Surge Suppressor, White



Media Plate Dimensions: 8.1" H x 7.6 W"

- Additional Features of the 45-0041-WH Surge Suppressor:**
- 15 Amp/125 Volt duplex surge receptacle\*
  - Maximum surge current - 12,000 amps
  - Peak suppression voltage - 1,000 volts
    - › Hot/Neutral, Hot/Ground, Neutral/Ground
  - Total maximum surge dissipation - 340 joules




All products on this page are patent protected by U.S. Patent numbers: D553475, D554475 and 7390964.  
 \*UL Recognized Component.

**Recessed Pro-Power Kit with Straight Blade Inlet**

PART #	DESCRIPTION
45-0023-WH	White

- Grounded recessed single receptacle\* allows you to install power behind your flat panel TV or similar applications
- Mounting wings are molded into the plate and fasten tightly against the back of the drywall
- Electrical outlet boxes included

 This product is patent protected by U.S. Patent numbers: 7390964, D553475, and D554475. \*UR, UL Recognized Component.

**Parts Included:**


- Recessed Low Voltage Cable Plate with Recessed Power
- Recessed Low Voltage Cable Plate with Straight Blade Inlet
- 2 Electrical Outlet Boxes
- 6 Ft. 16/2 with Ground Extension Cord
- 3 Wire Nuts



**Recessed Pro-Power Kit with Locking Inlet**

PART #	DESCRIPTION
45-0022-WH	White

- Grounded recessed single receptacle\* allows you to install power behind your flat panel TV or similar applications
- Mounting wings are molded into the plate and fasten tightly against the back of the drywall

 This product is patent protected by U.S. Patent numbers: 7390964, D553475, and D554475. \*UR, UL Recognized Component.


**Parts Included:**

- Recessed Low Voltage Cable Plate with Recessed Power
- Recessed Low Voltage Cable Plate with Locking Inlet
- 6 Ft. 16/2 with Ground Locking Extension Cord



**Recessed Low Voltage Cable Plate with Recessed Power**

PART #	DESCRIPTION
45-0021-BK	Black
45-0021-GY	Gray
45-0021-WH	White


 This product is patent protected by U.S. Patent numbers: 7390964, D553475, and D554475. \*UR, UL Recognized Component.



- Conceal multiple A/V cables behind your flat panel TV
- Can be installed upright or upside down
- Grounded 15 Amp recessed receptacle\* allows you to install power behind your flat panel TV or similar applications
- Mounting wings are molded into the plate and fasten tightly against the back of the drywall

**Recessed Low Voltage Cable Plate with 20 Amp Recessed Power**

PART #	DESCRIPTION
45-0020-WH	Commercial Grade, White

 This product is patent protected by U.S. Patent numbers: 7390964, D553475, and D554475. \*UR, UL Recognized Component.



- Conceal multiple A/V cables behind your flat panel TV
- Can be installed upright or upside down
- Grounded 20 Amp recessed receptacle\* allows you to install power in commercial applications
- Mounting wings are molded into the plate and fasten tightly against the back of the drywall

Recessed Media Box	
PART #	DESCRIPTION
45-0010-BK	Black
45-0010-WH	White

- Parts Included:**
- Recessed Media Box
  - Cover Plate
  - 4 Wall Plate Screws
  - Black Foam Tape
  - 2 #6 Wood Screws
  - 4 Small Threaded Screws
  - Screwdriver



- Conceal multiple A/V cables behind your flat panel TV
- Can be installed upright or upside down
- Mounting Wings are molded into the box and fasten tightly against the back of the drywall
- 4 Retrofit Mounting Tabs are molded into the box and can be snapped off in applications where the product is installed in new construction or remodeling
- Available in 2 colors



This product is patent protected by U.S. Patent number: 7495171.

Standard Wall Plate with HDMI Connector and Pigtail	
PART #	DESCRIPTION
20-4503-WH	Single HDMI Connector
20-4505-WH	Dual HDMI Connector

- Securely attach HDMI cords to the front of the wall plate and to the end of the pigtail
- Available with a single or dual HDMI connector and pigtail
- Compatible with High Speed HDMI cords with Ethernet



Décor Wall Plate Insert with 90° HDMI Connector	
PART #	DESCRIPTION
20-4501-WH	Single HDMI Connector
20-4502-WH	Dual HDMI Connector



- Can be installed with any manufacturer's décor style wall plate
- Securely attach HDMI cords to the front and back of the insert
- Available with a single or dual 90° HDMI connector
- Compatible with High Speed HDMI cords with Ethernet

Front View      Back View

HDMI Keystone Insert	
PART #	DESCRIPTION
20-4504-WH	White



- Snaps into any keystone style wall plate
- Securely attach HDMI cords to the front and back of the insert
- Compatible with High Speed HDMI cords with Ethernet



## DataComm Electronics Announces Our New High Speed & Performance HDMI Cables



### High Speed Premium HDMI Cables

PART #	DESCRIPTION
46-7503-BK	3 Ft. HDMI Cable, Black
46-7506-BK	6 Ft. HDMI Cable, Black
46-7509-BK	9 Ft. HDMI Cable, Black
46-7512-BK	12 Ft. HDMI Cable, Black
46-7515-BK	15 Ft. HDMI Cable, Black

### High Speed Premium HDMI Cables with RedMere® Technology

PART #	DESCRIPTION
46-7525-BK	25 Ft. HDMI Cable, Black
46-7550-BK	50 Ft. HDMI Cable, Black

DataComm Electronics is proud to announce a new line of premium HDMI cables that offer true high speed and performance. Our high quality cables support every function and feature within the HDMI high speed specifications. These features and specifications are listed below.

- Data speed transfer exceeds 10.2 Gbps
- HDMI Ethernet connectivity with HEAC (HDMI, Ethernet, Audio, Control)
  - › 100 Mbps base Ethernet
  - › Audio Return Channel
  - › 5.1, 7.1 Surround Sound
- 3D Signal Integrity
- 4K x 2K Resolution
- True high speed and performance
- 25 Ft. and 50 Ft. HDMI cables contain RedMere® Technology
- Gold plated HDMI connectors
- Full HD ready: 1080P signal and display
  - › 720P, 1080i, 1080P, 4K X 2K, 1440P
- 48-Bit Deep Color
- 30 Hz, 60 Hz, 120 Hz and 240 Hz refresh rates
- Oxygen Free Copper
- Full Plug and Play compatible
- Backwards compatible for all HDMI versions
- Available in 7 lengths: 3 Ft., 6 Ft., 9 Ft., 12 Ft., 15 Ft., 25 Ft. and 50 Ft.



DataComm Electronics, Inc.  
888.223.7977 / www.DataCommElectronics.com

