



# COPPER

## AUDIO/VIDEO

Hubbell iSTATION products provide a consistent and practical solution for delivering all types of connections. The Hubbell iSTATION system allows convergence by locating AV solutions where you need them:

- On the wall, in the wall
- On the furniture, in the furniture
- On the floor, in the floor
- On the surface
- On the rack, in the cabinet
- In the ceiling

The Hubbell iSTATION approach makes adding a connection effortless while maintaining a clean, uniform look.



PRODUCT	PAGE
EXTENSIVE VOICE/DATA/AUDIO/VIDEO APPLICATIONS .....	C2
X-END AV PLUG-N-PLAY SYSTEM .....	C3
X-END AV MODULES .....	C5
X-END AV APPLICATION TAILS .....	C6
HUBBELL iSTATION HDMI CONNECTIONS.....	C7
HUBBELL iSTATION HDMI EXTENDERS & CABLES .....	C8
HUBBELL iSTATION DIGITAL VIDEO INTERFACE (DVI)/DISPLAY PORT .....	C9
HUBBELL iSTATION D-STYLE CONNECTIONS .....	C10
HUBBELL iSTATION VGA ANALOG CONNECTIONS .....	C11
HUBBELL iSTATION AV CONNECTIONS.....	C12
HUBBELL iSTATION RCA AND F-CONNECTORS .....	C13
HUBBELL iSTATION RCA AND USB CONNECTORS.....	C14
HUBBELL iSTATION AUDIO/VIDEO MODULES .....	C15
HUBBELL iSTATION FRONT-LOADING, FRAMES AND MODULES .....	C17



# EXTENSIVE VOICE/DATA/AUDIO/VIDEO APPLICATIONS



Keystone Plate

## On the Wall

Plates and Frames  
Refer to Sections B and C



FPTV Connection Enclosure

## In the Wall

Flat Panel/White Board Enclosures  
Refer to Section T



Furniture Plate

## On the Furniture

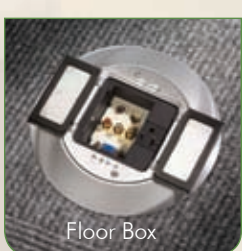
Furniture Plates  
Refer to Section B



Table Top Box

## In the Furniture

Table Top Boxes  
Refer to Section Q



Floor Box

## On the Floor

Floor Boxes  
Refer to Section Q



Poke-Through

## In the Floor

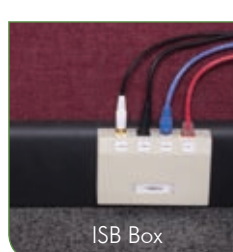
Fire-Rated Poke-Throughs  
Refer to Section Q



Raceway

## On the Surface

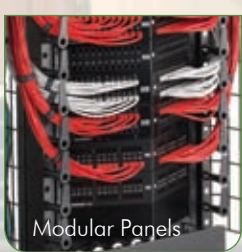
Metallic and Non-metallic Raceway  
Refer to Section R



ISB Box

## On the Surface

Surface Mount Boxes  
Refer to Section B



Modular Panels

## On the Rack

UDX Modular Panels  
Refer to Section L



Multimedia Cabinet

## In the Cabinet

UDX Modular Panels  
Refer to Section N



AV Ceiling Enclosure

## In the Ceiling

Multimedia Enclosures  
Refer to Section M



Security Enclosures

## Along the Ceiling

Enclosures  
Refer to Section M



# AV PLUG-N-PLAY SYSTEM



### Flexibility

Four-inch connector tail provides flexibility for installations with capacity constraints.



### Capacity

Small form factor allows horizontal cable to easily be pulled through 3/4" conduit without any issue.



### Superior Strain Relief

Over mold protects the cable and connectors during and after the installation, and secures the connection.



### Versatility

Allows the user to swap out application patch cords and tails utilizing the same horizontal cable without change.

### 15-Pin (VGA):

- SVGA 800 x 600 – 100 ft
- XGA 1024 x 768 – 100 ft
- 720 HD 1080 x 720 – 100 ft
- WXGA 1368 x 768 – 100 ft
- SXGA 1280 x 1024 – 75 ft
- SXGA+ 1400 x 1050 – 75 ft
- UXGA 1600 x 1200 – 50 ft

### S-video Y/C: 100 ft

### RCA:

- Composite: 100 ft
- Component: 480i, 480p, 576i, 576p, 720p, 1080i and 1080p – 100 ft



- Patented, Integrated AV System
- Eliminates Field Termination on the Job Site
- Supports Multiple Applications and Connector Configurations
- Made-to-Length Eliminates Cable Waste

### Specifications

- 5 mini coax, 28AWG, 75 Ω
- Connector OD: .50"
- Cable OD: .32"
- 100% factory tested

### Standards/Listings/Verifications

- UL Rated CMP and CMR
- Patch cord cable: UL Rated CM
- UL Listed: 1863





# AV PLUG-N-PLAY SYSTEM

The most innovative approach to VGA termination, saving valuable time during installation.

### VGA Plug-n-Play X-End Connections, 15-Pin (F) to 8-Pin (F)

Description	X-End 8-Pin	15-Pin	1 per bag	10 per bag
Straight 180°	Female	Female	<b>15S6P1</b>	<b>15S6P10</b>
Angled 45°	Female	Female	<b>15A6P1</b>	<b>15A6P10</b>
Angled 90°	Female	Female	<b>15N6P1</b>	<b>15N6P10</b>
8" tail	Female	Female	<b>15T6P1</b>	<b>15T6P10</b>
8" tail plenum	Female	Male	<b>15MP6P1</b>	<b>15MP6P10</b>



15A6P1



15N6P1



15MP6P1

### AV Plug-n-Play X-End Horizontal Cable Runs

Description	X-End 8-Pin	3.5mm	Color	Catalog No.
Non-plenum, 8-pin	Male	—	Black	<b>VGA6yyBK</b>
Plenum, 8-pin	Male	—	Black	<b>VGA6PyyBK</b>
Non-plenum, 8-pin, with 3.5mm	Male	Male	Black	<b>VGA36yyBK</b>
Plenum, 8-pin, with 3.5mm	Male	Male	Black	<b>VGA36PyyBK</b>

yy = Length: **15** (15'), **25** (25'), **35** (35'), **50** (50'), **75** (75'), and **100** (100'). Contact Hubbell customer service for custom lengths, minimum quantities and lead times may apply.



VGA6P05BK



VGA36P05BK



**OPTISOK**® pulling grip contains and protects the X-End connector bundle and saves time and labor by making job easier while protecting the connectors from possible damage during the pull. The **OPTISOK** has been designed to pull cables through conduits, plenums, under-floor duct, office partitions and raised access floors.



### OPTISOK®

Bundle Size Range	Catalog No.
0.125–0.562"	<b>CCPS1</b>
0.250–0.750"	<b>CCPS2</b>



CCPS1



**X-End Keystone Snap Fit Connectors**

Description	Keystone 8-pin	X-End 8-pin	Color	Catalog No.
Keystone, 4" tail	Female	Female	Black	<b>SFAVCT</b>
Keystone, 90°	Female	Female	Black	<b>SFAVCN</b>
Keystone, straight	Female	Female	Black	<b>SFAVCS</b>



**X-End Plug-n-Play Modules**

Description	Modular Connections	X-End 8-pin	Unit	Catalog No.
S-video with 3.5mm audio	Female	Female	1 U	<b>IMS3581xx</b>
S-video with 2 RCA L/R audio	Female	Female	1 U	<b>IMSRA81xx</b>
3 RCA composite video w/L/R audio	Female	Female	1 U	<b>IMR8P1xx</b>
3 RCA component video	Female	Female	1 U	<b>IMCR81xx</b>
3 RCA composite S-video w/ L/R audio	Female	Female	1.5 U	<b>IMSRC815xx</b>
4 RCA component video w/ S/PDIF	Female	Female	1.5 U	<b>IMCRD815xx</b>
5 RCA component video w/ L/R audio	Female	Female	1.5 U	<b>IMCAR815xx</b>
3 RCA component w/ 3.5mm audio	Female	Female	1.5 U	<b>IMC35815xx</b>
3 RCA component with S-video	Female	Female	1.5 U	<b>IMSCCR815xx</b>
5-BNC RGBHV	Female	Female	1.5 U	<b>IMB815xx</b>
15-pin VGA w/ 3.5mm audio	Female	Female	1.5 U	<b>IM153815xx</b>

**xx** = Color: **AL** (Almond), **BK** (Black), **EI** (Electric Ivory), **GY** (Gray), **LA** (Light Almond), **OW** (Office White), and **W** (White). Light Almond is the same color as Office White. See color chart on page V30.



IMSRA81OW



IMCR81OW



IMCAR815GY



IMC35815GY



IMB815GY



**X-End AV Plug-n-Play Application Tails**

Description	Connector Tail	X-End 8-Pin	Length	Catalog No.
S-video with 3.5mm audio	Male	Female	1ft tail	<b>AVS35T1</b>
S-video with 2 RCA L/R audio	Male	Female	1ft tail	<b>AVSRAT1</b>
3 RCA composite video with L/R audio	Male	Female	1ft tail	<b>AVRCT1</b>
3 RCA component Video	Male	Female	1ft tail	<b>AVCRT1</b>
3 RCA composite S-video with L/R audio	Male	Female	1ft tail	<b>AVSRCT1</b>
4 RCA component video with S/PDIF	Male	Female	1ft tail	<b>AVCRDT1</b>
5 RCA component video with LR audio	Male	Female	1ft tail	<b>AVCART1</b>
3 RCA component with 3.5mm audio	Male	Female	1ft tail	<b>AVC35T1</b>
3 RCA component with S-video	Male	Female	1ft tail	<b>AVSCRT1</b>
5-BNC RGBHV	Male	Female	1ft tail	<b>AVBT1</b>



**X-End AV Plug-n-Play Application Patching Runs**

Description	Connector Tail	X-End 8-Pin	Catalog No.
S-video with 3.5mm audio	Male	Male	<b>AVS35yy</b>
S-video with 2 RCA L/R audio	Male	Male	<b>AVSRAyy</b>
3 RCA composite video with L/R audio	Male	Male	<b>AVRCyy</b>
3 RCA component video	Male	Male	<b>AVCRyy</b>
3 RCA composite S-video with L/R audio	Male	Male	<b>AVSRCyy</b>
4 RCA component video with S/PDIF	Male	Male	<b>AVCRDyy</b>
5 RCA component video with L/R audio	Male	Male	<b>AVCARyy</b>
3 RCA component with 3.5mm audio	Male	Male	<b>AVC35yy</b>
3 RCA component with S-video	Male	Male	<b>AVSCRyy</b>
5-BNC RGBHV	Male	Male	<b>AVByy</b>
15-Pin VGA	Male	Male	<b>AV15Myy</b>
15-pin VGA with 3.5mm audio	Male	Male	<b>AV1535yy</b>

yy = Length: **05** (5'), **10** (10').





**Versatility**

HDMI connections are supplied in 4 different configurations supported in all Hubbell Work Station and Delivery products.



**Capacity**

Small form factor keystone opening allows up to 6 HDMI connections in a single gang.



**Reliability**

Locking interface ensures mated connection stays terminated.



**Flexibility**

4" connector tail provides flexibility for installations with capacity constraints.

**Performance**

110 style connections transport full 1080p video and flawless audio.

**ISFH110xx Distance Limitations 1080P over UTP, version 1.3**

Cat 5e	UTP	24AWG	40 Meters
Cat 6	UTP	24AWG	45 Meters
Cat 6A	UTP	23AWG	50 Meters

Note: Hubbell approved UTP cable.

**HUBBELL**  
**Advantage**

- Keystone, Coupler and 110 Style Connections
- Four-Inch Application Tail Provides Ease-of-Use for Capacity Issues
- Full High Definition 1080p Signal
- Assemblies Made-to-Length Eliminates Cable Waste

Dolby® is a registered trademark of Dolby Laboratories, Inc.

**Specifications**



- HDMI (High Definition Media Interface) cables category 2 rated, 24AWG
- Connector: 19-pin, 2 micro-inch gold-plated
- Audio signal: PCM, DVD-audio, super audio CD, Dolby® TrueHD, DTS-HD master audio
- Video signal: 1080i, 1080p



**Hubbell iSTATION HDMI 110 UTP Extenders**

Description	Type	DC	Installation	Catalog No.
110 UTP HDMI extender (pair)	Decorator	5 Volt	2 4-pair	<b>ISFH110xx</b>
110 UTP HDMI extender (pair)	Module	5 Volt	2 4-pair	<b>IMH1102xx</b>

**xx** = Color: **BK** (Black), **EI** (Electric Ivory), **GY** (Gray), **OW** (Office White), and **W** (White).  
See color chart on page V30.



ISFH110W



**HDMI 1.4 Connectors**

Unit of Measure	HDMI Keystone Feed Thru	HDMI Feed Thru Coupler	HDMI Feed Thru 3-Inch Tail
1 per bag	<b>SFHC14xx</b>	<b>HDMIC14</b>	<b>HDMIT14</b>

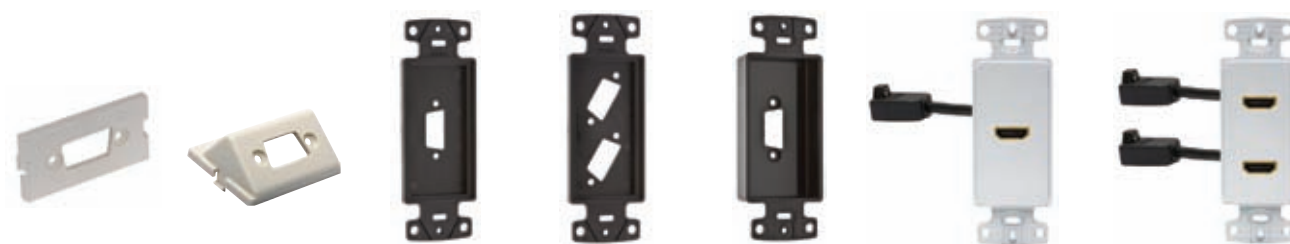
**xx** = Color: **BK** (Black) and **W** (White).



**HDMI Non-Active Horizontal Patch Cords**

Color	Patch Cords, 24AWG		Horizontal Cords, 24AWG (connector-to-connector)	Link Cords, 24AWG (connector-to-device)	Coupler Cords, 24AWG (coupler-to-device)
	3'	6'			
Black	<b>HDPC03BK</b>	<b>HDPC06BK</b>	<b>HDHyyBK</b>	<b>HDLyyBK</b>	<b>HDCyyBK</b>

**yy** = Length: **10** (10'), **15** (15'), **20** (20'), **25** (25'), **30** (30'). Black and non-plenum only.



**Blank HD15/9-Pin or HDMI Hubbell iSTATION Modules and Frames**

Blank, 1U HD15/9-Pin or HDMI	Blank Angled, 1.5U HD15/9-Pin or HDMI	Blank HD15/9-Pin or HDMI	(2) Blank HD15/9-Pin or HDMI	(1) Recessed HD15/9-Pin or HDMI	HDMI Decorator Frames, 1-Port	HDMI Decorator Frames, 2-Port
<b>IMBDS1xx</b>	<b>IMBDSA15xx</b>	<b>ISFB15xx</b>	<b>ISFB215xx</b>	<b>ISFBR15xx</b>	<b>NS801xx*</b>	<b>NS802xx*</b>

**xx** = Color: **AL** (Almond), **BK** (Black), **EI** (Electric Ivory), **GY** (Gray), **LA** (Light Almond), **OW** (Office White), and **W** (White). **\*I** (Electric Ivory).  
See color chart on page V30.





**Versatility**

Connections are supplied in different configurations supported in all Hubbell Work Station and Delivery products.

**HUBBELL**  
**Advantage**

- First VGA Front Mount Keystone Connector
- Hubbell One Design Provides Ease-of-Use for Compatibility and Integration
- Provides Transparent Analog Video Distribution



**DVI Specifications**

- Connectors: gold-plated 2μ"
- DVI – I, DVI-D, DVI-A couplers
- Standard DVI distance limitation:
  - 15 feet 1920 x 1200
  - 50 feet 1280 x 1024

**VGA Specifications**

- Connectors: gold-plated 2μ"
- Screw term contact: brass with nickel-plating
- HD15 GC connector female to female
- HD15 ST connection female to screw termination
- Signal performance: RGBHV



**DVI Adapters/Couplers**

Unit of Measure	DVI-I Coupler	DVI to VGA Adapter	DVI to HDMI Adapter
1 per bag	<b>DVI1</b>	<b>DVI151</b>	<b>DVIHDMI1</b>



**X-End Connections, 15-Pin (F) to 8-Pin (F)**

Unit of Measure	Straight 180°	Angled 45°	Angled 90°
1 per bag	<b>15S6P1</b>	<b>15A6P1</b>	<b>15N6P1</b>
10 per bag	<b>15S6P10</b>	<b>15A6P10</b>	<b>15N6P10</b>

See pages C3-C6 for more information on X-End.



**Gender Changers, 9 and 15-Pin Connections**

Unit of Measure	15-Pin, 90° F/F Coupler	HD 9-Pin F/F Coupler	HD 15-Pin F/F Coupler
1 per bag	<b>15901</b>	—	—
10 per bag	<b>159010</b>	<b>9GC10</b>	<b>15GC10</b>



**Screw Terminal, 9 and 15-Pin Connections**

Unit of Measure	HD 9-Pin Screw Term	HD 15-Pin Screw Term	HD 15-Pin, Screw Term, Keystone Front Mount
10 per bag	<b>9ST10</b>	<b>15ST10</b>	<b>SF15ST</b>



**VGA Style Cable 5-Mini Coax, 28AWG**

Description	Color	Length	Catalog No.
Plenum, 5-mini coax	Black	250ft	<b>AVCP250</b>
Riser, 5-mini coax	Black	250ft	<b>AVCR250</b>



**Blank HD15/9-Pin or HDMI Hubbell iSTATION Modules and Frames**

Blank, 1 Unit HD15/9-Pin or HDMI	Blank Angled, 1.5 Unit HD15/9-Pin or HDMI	Blank, 1.5 Unit HD15/9-Pin or HDMI with 3.5mm Stereo Jack (Screw termination or solder)	Blank, 2 Unit HD15/9-Pin or HDMI with 3.5mm SJ+AV Conn
<b>IMBDS1xx</b>	<b>IMBDSA15xx</b>	<b>IMB15315xx</b>	<b>IMB153X2xx</b>

**xx** = Color: **AL** (Almond), **BK** (Black), **EI** (Electric Ivory), **GY** (Gray), **OW** (Office White), and **W** (White). See color chart on page V30.



**Blank HD15/9-Pin or HDMI Hubbell iSTATION Frames and DVI Modules**

Blank HD15/9-Pin or HDMI	(2) Blank HD15/9-Pin or HDMI	(1) Recessed HD15/9-Pin or HDMI	Blank DVI Module, 1.5 Unit, 1 per bag	Blank DVI Module, 1.5 Unit, 10 per bag
<b>ISFB15xx</b>	<b>ISFB215xx</b>	<b>ISFBR15xx</b>	<b>IMBDVI15xx</b>	<b>IMBDVI1015xx</b>

**xx** = Color: **AL** (Almond), **BK** (Black), **EI** (Electric Ivory), **GY** (Gray), **LA** (Light Almond), **OW** (Office White), and **W** (White). Light Almond is the same color as Office White. See color chart on page V30.



**Versatility**

Pro Audio Connections are supplied with Hubbell iSTATION modules supporting XLR type applications in Work Area and Delivery products.

**Performance**

All Pro-Audio connections are provided with at least 2µ" of gold-plating in the contact area.

**Reliability**

XLR Screw term provides a quick and easy consistent field termination.



- True AV Integration
- Hubbell One Design Provides Ease-of-Use for Compatibility and Integration
- Provides Transparent Signal Distribution

**Specifications**



- Connectors: gold-plated 2µ"
- Shell: XLR, ¼", 1394 and USB zinc diecast
- Shell : speakON® polyamide



**Pro Audio Connections**

	XLR, 3-Pole Locking, Screw Term	XLR 3-Pole Locking, Solder	¼" Locking Stereo, Solder	2-Pole speakON®, Solder	USB, A-to-B Pass-Thru	1394 FireWire, Pass-Thru
Unit of Measure						
10 per bag	<b>XLRST10</b>	<b>XLR10</b>	<b>14S10</b>	<b>SC10</b>	<b>USB10</b>	<b>139410</b>

**Blank AV Panel Mount Module**

Unit of Measure	Blank AV Panel Mount Module, 1.5 Unit
10 per bag	<b>IMAVB15xx</b>

**Loaded Pro AV Modules**

Unit of Measure	Mini XLR, 3-Pole, Solder, 1 Unit	15-Pin Screw Term, 3.5mm Stereo Jack Screw Term, XLR Screw Term, 2 Unit
1 per bag	<b>IMXLRM1xx</b>	<b>IM153X2xx*</b>

xx = Color: **AL** (Almond), **BK** (Black), **EI** (Electric Ivory), **GY** (Gray), **OW** (Office White), and **W** (White). See color chart on page V30.  
\*Available in Office White only.

speakON® is a registered trademark of Neutrik® AG.



**3.5mm Stereo Jacks**

Unit of Measure	3.5mm to Solder	3.5mm to Screw Terminal	3.5mm Pass-Thru, F/F Coupler	3.5mm Pass-Thru, Gold, F/F Coupler	3.5mm to 110 Termination
1 per bag	<b>SF35SJxx</b>	<b>SF35STxx</b>	<b>SF35FFxx</b>	<b>SF35GFFxx</b>	<b>SF35110BK</b>



**S-Video Connections**

Unit of Measure	S-video to 110 Termination	S-video Pass-Thru, F/F Coupler
1 per bag	<b>SFSV110BK</b>	<b>SFSVBK</b>



**BNC Connectors**

Unit of Measure	BNC Connector, Pass-Thru, F/F Coupler	BNC Connector, Pass-Thru, F/F Coupler, Gold
1 per bag	<b>SFBxx</b>	<b>SFBGxx</b>

**3.5mm Stereo Jacks**

	Bulk 3.5mm Connectors, 10 per Bag		
Unit of Measure	Solder	Pass-Thru	Screw Termination
10 per bag	<b>35S10</b>	<b>35FF10</b>	<b>35ST10</b>



**1/4" Stereo Jack**

Unit of Measure	Stereo Jack, 1/4", Solder
1 per bag	<b>SF14SJxx</b>

**Gold Speaker Post Connectors and Banana Plugs**

Unit of Measure	Speaker Post, Gold, Black, Screw Termination	Speaker Post, Gold, Red, Screw Termination	Speaker Banana Plugs, Gold, Screw Termination, 10 per Bag	Black	Red
1 per bag	<b>SFSPGBKxx</b>	<b>SFSPGRxx</b>	<b>SPPBK10</b>		<b>SPPR10</b>

xx = Color: **AL** (Almond), **BK** (Black), **EI** (Electric Ivory), **GY** (Gray), **OW** (Office White), and **W** (White). See color chart on page V30.



## F-Connector, Pass-Thru, F/F Coupler

Housing Color	Almond	Black	Electric Ivory	Gray	Light Almond	Office White	White
1 per bag.	<b>SFFALX</b>	<b>SFFBX</b>	<b>SFFEX</b>	<b>SFFGX</b>	<b>SFFLAX</b>	<b>SFFX</b>	<b>SFFWX</b>



## F-Type Connectors

Unit of Measure	F-Connector, Gold, 3 GHz, Pass-Thru, F/F Coupler	F-Connector, Gold, Pass-Thru, F/F Coupler	F-Connector, Gold, Recessed, Pass-Thru, F/F Coupler	RCA to F-Connector, Gold, Pass-Thru, F/F Coupler
1 per bag	<b>SFF3Gxx</b>	<b>SFFGxx</b>	<b>SFGRFxx*</b>	<b>SFRFGxx*</b>

**xx** = Color: **AL** (Almond), **BK** (Black), **EI** (Electric Ivory), **GY** (Gray), **LA** (Light Almond), **OW** (Office White), and **W** (White). \*Not available in Almond. Light Almond is the same color as Office White. See color chart on page V30.



## Blank Connectors and Coupler

Unit of Measure	Blank Connector	Blank Office White Connector	Smooth Blank Connector	RG59 Male to RG6 Female Coupler
10 per bag	<b>SFBxx10</b>	<b>SFB10</b>	<b>SFSBxx10*</b>	<b>RG59A10</b>

**xx** = Color: **AL** (Almond), **B** (Black), **E** (Electric Ivory), **G** (Gray), **LA** (Light Almond), and **W** (White).

\***AL** (Almond), **BK** (Black), **EI** (Ivory), **GY** (Gray), **LA** (Light Almond), and **W** (White). See color chart on page V30.

## F-Connector Plugs and Tools

Termination Type	Cable Type	Unit of Measure	Catalog No.
Compression	RG6	25 per bag	<b>FRG625</b>
Compression	RG59	25 per bag	<b>FRG5925</b>
Crimp	RG6	25 per bag	<b>FRG6C25</b>
Push-on plug	RG59	25 per bag	<b>RG59FPO</b>

Tools	Catalog No.
Crimp tool frame (die-sets sold separately)	<b>UCT</b>
RG6 and RG59 crimp die-set	<b>CDTSRG659</b>
RG6 and RG59 compression tool	<b>COMPTRG659</b>





**RCA Connectors**

Insulator Color	RCA 110 Punch-Down Black Housing	RCA Solder Termination*	RCA Pass-Thru Recessed*	RCA Gold Pass-Thru, F/F Coupler	
				Office White Housing	Additional Housing Colors*
Black	—	<b>SFRCBKxx</b>	<b>SFRCBKRxx</b>	<b>SFRCBKFF</b>	<b>SFRCBKFFxx</b>
Blue	<b>SFRC110B</b>	<b>SFRCBxx</b>	<b>SFRCBRxx</b>	<b>SFRCBFFOW</b>	<b>SFRCBFFxx</b>
Green	<b>SFRC110GN</b>	<b>SFRCGNxx</b>	<b>SFRCGNRxx</b>	<b>SFRCGNFFOW</b>	<b>SFRCGNFFxx</b>
Orange	—	<b>SFRCORxx</b>	<b>SFRCORRxx</b>	<b>SFRCORFFOW</b>	<b>SFRCORFFxx</b>
Red	<b>SFRC110R</b>	<b>SFRCRxx</b>	<b>SFRCRRxx</b>	<b>SFRCRFF</b>	<b>SFRCRFFxx</b>
White	<b>SFRC110W</b>	<b>SFRCWxx</b>	<b>SFRCWRxx</b>	<b>SFRCWFF</b>	<b>SFRCWFFxx</b>
Yellow	<b>SFRC110Y</b>	<b>SFRCYxx</b>	<b>SFRCYRxx</b>	<b>SFRCYFF</b>	<b>SFRCYFFxx</b>

Note: \*For housing colors, replace **xx** with: **AL** (Almond), **BK** (Black), **EI** (Electric Ivory), **GY** (Gray), **LA** (Light Almond), and **W** (White). Light Almond is the same color as Office White. See color chart on page V30.



**6-Pin DIN and RJ45 Connectors**

Housing Color	6-Pin DIN, Keyboard, Pass-Thru, F/F Coupler	6-Pin DIN, Mouse, Pass-Thru, F/F Coupler	Category 6, Pass-Thru, F/F Coupler	Category 5e, Pass-Thru, F/F Coupler	Category 5e, Cross Over 10/100BASE-T, F/F Coupler
Black	<b>SF6PK</b>	<b>SF6PM</b>	<b>SFC6BK</b>	<b>SFC5EBK</b>	—
Gray	—	—	—	—	<b>SF5ECOgy</b>
White	—	—	<b>SFC6W</b>	<b>SFC5EW</b>	—



**USB Connectors**

Housing Color	USB 3.0, A to A, Pass-Thru, F/F, Coupler	USB 3.0, A to B, Pass-Thru, F/F, Coupler	USB 2.0, A to A, Pass-Thru, F/F, Coupler	USB 2.0, A to B, Pass-Thru, F/F, Coupler
Black	<b>SFUSBAA3BK</b>	<b>SFUSBAB3BK</b>	—	—
Blue	—	—	<b>SFUSBAAB</b>	<b>SFUSBABB</b>
Office White	—	—	<b>SFUSBAAOW</b>	<b>SFUSBABOW</b>
White	—	—	<b>SFUSBAAW</b>	<b>SFUSBABW</b>



**HUBBELL**  
**Advantage**

- 110 Style Audio/Video Modules
- Quick and Easy 110 Termination
- Provides Composite, Component and S-Video Transmissions



**Specifications**

- Connector:
  - Connector body: brass
  - Plating: nickel 100μ"
  - Contact: nickel over phosphorous bronze
- Material:
  - Module: flame-retardant polymer UL 94V-0



**110 Audio Video Modules, 1.5 Unit**

RCA component Video, L/R Audio, 110 Termination, 75 ft. max., Category 3, 5, 5e, 6, 6A UTP	RCA component Video, 3.5mm Audio, 110 Termination, 75 ft. max., Category 3, 5, 5e, 6, 6A UTP	RCA Composite Video, 3.5mm Audio, 110 Termination, 75 ft. max., Category 3, 5, 5e, 6, 6A UTP	RCA component Video with S-video, 110 Termination, 75 ft. max., Category 3, 5, 5e, 6, 6A UTP
<b>IMCAR11015xx</b>	<b>IMC3511015xx</b>	<b>IMR3511015xx</b>	<b>IMSC11015xx</b>

xx = Color: **AL** (Almond), **BK** (Black), **EI** (Electric Ivory), **GY** (Gray), **LA** (Light Almond), **OW** (Office White), and **W** (White). Light Almond is the same color as Office White. See color chart on page V30.



**110 Audio Video Modules, 1 Unit**

RCA component Video to 110 Termination, 1 Unit, 75 ft. max. High Definition, Category 3, 5, 5e, 6A UTP	S-video, with Left/Right RCA Audio to 110 Termination, 1 Unit, 100' max. Category 3, 5, 5e, 6A UTP	S-video, 3.5mm Stereo Audio Jack to 110 Termination, 1 Unit, 100' max. Category 3, 5, 5e, 6A UTP	RCA Composite Video with Left/Right Audio to 110 Termination, 1 Unit, 100' max. Category 3, 5, 5e, 6A UTP	RCA Left/Right Audio 110 Termination, 1 Unit, 100' max. Category 3, 5, 5e, 6A UTP
<b>IMCR1101xx</b>	<b>IMSR1101xx</b>	<b>IMSV351101xx</b>	<b>IMR1101xx</b>	<b>IMAR1101xx</b>

xx = Color: **AL** (Almond), **BK** (Black), **EI** (Electric Ivory), **GY** (Gray), **LA** (Light Almond), **OW** (Office White), and **W** (White). Light Almond is the same color as Office White. See color chart on page V30.



# AUDIO/VIDEO MODULES



- Integrated Module System
- Easy Plug-n-Play Style Connections
- Provides High Quality Audio/Video Distribution



### Specifications

- Connector:
  - Connector body: brass nickel-plated 100µ"
- Performance:
  - Impedance: 75 Ohms
  - Mating cycles: 500+
- Material:
  - Module: flame-retardant polymer UL 94V-0



### Solder Audio Video Modules

RCA component Video with Left/Right Audio or RGBHV, Solder, 1.5 Unit

RCA component, Video, Solder, 1 Unit

RCA Composite Video with Left/Right Audio, Solder, 1 Unit

RCA Composite Video, 3.5mm Stereo Audio Jack, Solder, 1 Unit

**IMCRS15xx**

**IMCRS1xx**

**IM3RS1xx**

**IMRSJ1xx**



### Gold Pass-Thru Audio Video Modules

RCA component, Video, Gold, Pass-Thru, F/F Coupler, 1 Unit

RCA Composite, Video with Left/Right Audio, Gold, Pass-Thru, F/F Coupler, 1 Unit

RCA Left/Right Audio with 3.5mm Stereo Audio Jack, Gold, Pass-Thru, F/F Coupler, 1 Unit

Speaker Post, Gold, Black and Red, Screw Termination

Speaker Banana Plugs, Gold, Screw Termination, 10 per Bag  
Black                      Red

**IMCRF1xx**

**IM3RF1xx**

**IM35AR1xx**

**IMSP1xx**

**SPPBK10    SPPR10**

xx = Color: **AL** (Almond), **BK** (Black), **EI** (Electric Ivory), **GY** (Gray), **LA** (Light Almond), **OW** (Office White), and **W** (White). Light Almond is the same color as Office White. See color chart on page V30.







**HUBBELL**  
**Advantage**

- Designed to Flush Mount with Box Eliminator
- Adjustable Leveling Feature
- ANSI/TIA-606-B Compliant
- Allows for Future Upgrades without Replacing Frame



**Specifications**



- Fits all Hubbell keystone connections (AV, data and fiber)
- Available in single and double-gang
- All IMF plates are supplied with paper labels, clear screw covers, and color matched screw covers

**Hubbell iSTATION Modular Face Plate Frames**

Gangs	1-Gang	2-Gang
Unit of Measure	1 per bag	1 per bag
Catalog No.	<b>IMF1xx</b>	<b>IMF2xx</b>

**xx** = Color: **AL** (Almond), **BK** (Black), **EI** (Electric Ivory), **GY** (Gray), **OW** (Office White), and **W** (White). See color chart on page V30.



IMF1OW



IMF2OW

**Hubbell iSTATION Stainless Steel Plates**

Gangs	1-Gang	2-Gang	3-Gang	4-Gang
Unit of Measure	1 per bag	1 per bag	1 per bag	1 per bag
Catalog No.	<b>IMSS1</b>	<b>IMSS2</b>	<b>IMSS3</b>	<b>IMSS4</b>



IMSS1



IMSS2

**Delivery Bezels and Modules**

	Raceway Bezel	Hubbell iSTATION Bezel for Third-Party Raceway	Multi-Connect and Furniture Boxes
Unit of Measure	1 per bag	1 per bag	1 per bag
Color	Catalog No.	Catalog No.	Catalog No.
Black	—	—	<b>HBLIMFBK</b>
Electric Ivory	—	—	<b>HBLIMFI</b>
Gray	<b>KPIMBZGY</b>	<b>HWAPLGY</b>	<b>HBLIMFGY</b>
Office White	<b>KPIMBZOW</b>	<b>HWAPLOW</b>	—
White	—	<b>HWAPLW</b>	<b>HBLIMFWA</b>



KPIMBZOW



HWAPLOW



HBLIMFWA

**Third Party Raceway Modules, 2-Port, Unloaded**

Unit of Measure	Ports	Color	Catalog No.
10 per bag	2	Black	<b>HWM2KBK10</b>
10 per bag	2	Ivory (equivalent to Hubbell Office White)	<b>HWM2KI10</b>
10 per bag	2	Gray	<b>HWM2KGY10</b>
10 per bag	2	White	<b>HWM2KW10</b>



HWM2KW10



HWM2KGY10



**Hubbell iSTATION Modules, Unloaded**

	Keystone 1-Port, Flat, 1 Unit	Keystone 2-Port, Flat, 1 Unit	Keystone 1-Port, Angled, 1.5 Unit	Keystone 2-Port, Angled, 1.5 Unit	Keystone Recessed Angled, 1-Port, 1.5 Unit	Keystone Recessed Angled, 2-Port, 1.5 Unit
Unit of Measure	1 per bag	1 per bag	1 per bag	1 per bag	1 per bag	1 per bag
Catalog No.	<b>IM1K1xx</b>	<b>IM2K1xx</b>	<b>IM1KA15xx</b>	<b>IM2KA15xx</b>	<b>IM1IA15xx*</b>	<b>IM2IA15xx*</b>



	Blank, 0.5 Unit	Blank, 1 Unit	Blank, 1.5 Unit	SC Angled, 1 Duplex, 1.5 Unit	SC Angled, 2 Duplex, 2 Unit
Unit of Measure	1 per bag	1 per bag	1 per bag	1 per bag	1 per bag
Catalog No.	<b>IMB05xx</b>	<b>IMB1xx</b>	<b>IMB15xx</b>	<b>IM1SCA15xx*</b>	<b>IM2SCA2xx*</b>

**xx** = Color: **AL** (Almond), **BK** (Black), **EI** (Electric Ivory), **GY** (Gray), **LA** (Light Almond), **OW** (Office White), and **W** (White).  
Light Almond is the same color as Office White. See color chart on page V30. \*Not available in Almond.



**Blank HD15/9-Pin or HDMI Hubbell iSTATION Modules**

	Blank, 1 Unit HD15/9-Pin or HDMI	Blank, Angled, 1.5 Unit HD15/9-Pin or HDMI	Blank, 1.5 Unit HD15/9-Pin or HDMI with 3.5mm Stereo Jack (Screw termination or solder)	Blank, 2 Unit HD15/9-Pin or HDMI with 3.5mm SJ+Pro AV Connections
Unit of Measure	1 per bag	1 per bag	1 per bag	1 per bag
Catalog No.	<b>IMBDS1xx</b>	<b>IMBDSA15xx</b>	<b>IMB15315xx</b>	<b>IMB153X2xx</b>

**xx** = Color: **AL** (Almond), **BK** (Black), **EI** (Electric Ivory), **GY** (Gray), **OW** (Office White), and **W** (White).  
Light Almond is the same color as Office White. See color chart on page V30.

The Hubbell iSTATION Frames accept three units of module combinations in a single-gang opening. See diagram for details.

