

Model No.

# 150LVCS-DSB

Stereo Volume Control

INCLUDES:

- 150W stereo attenuator
- 2-gang decorator-style wall plate
- Rotary knob



150W STEREO ATTENUATOR is engineered for three types of 70V/100V applications—distributed mono systems, distributed mono systems with subwoofer, and distributed stereo systems. This unit includes a two-gang decorator-style stainless steel wall plate and rotary knob.

## FEATURES

**DESCRIPTION:** Stereo autoformer attenuator for use with 70V/100V speaker line

**POWER RATING:** 150W

**ATTENUATION:** 3dB per step (33dB total with two steps of 6dB each before off)

**TERMINATION:** Phoenix style plug-in screw termination strips for pre-wire convenience

**WIRE CAPACITY:** Up to 14-gauge

**SWITCH TYPE:** Rotary knob, black

**SWITCH POSITIONS:** 0-max (10)

**WALL PLATE:** Two-gang decorator-style wall plate, stainless steel wall plate with black subplate.

**INSTALLATION:** Designed to fit two-gang E.O. box with minimum depth of 2.5 inches including mud ring, if used. (not included)

**COMPLIANCE & CERTIFICATIONS:**

- ETL Listed (to UL 60065, UL 2043)
- Assembled in U.S.A. (U.S. stainless steel wall plate and Chinese components)

## A&E SPECIFICATIONS

The stereo autoformer attenuator volume control for distributed mono systems, distributed mono systems with subwoofer, or distributed stereo applications shall be Lowell model 150LVCS-DSB, with power rating of 150W per channel and 3dB per step attenuation with two positions of 6dB before off. The volume control shall have plug-in termination for up to 14-gauge wire for 70V or 100V input connections (from an amplifier), and 70V or 100V output (to a speaker/transformer assembly). It shall include a two-gang decorator-style stainless steel wall plate with black subplate and rotary knob.

## OPTIONS

**P1X-2:** Two-gang surface-mount steel wall box with knockouts and white powder epoxy finish. Includes U-clips.

## OVERVIEW: 150W STEREO ATTENUATORS

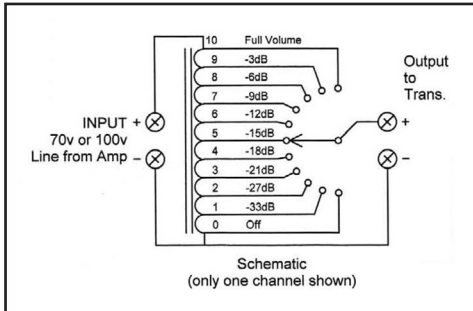
Model No.	Power Rating	Attenuation Steps*	Type	Priority Relay	Mount Type	Plate Size	Color	Switch	Listing	For Use With
150LVCS	150 W	3 dB	autoformer	---	standard wall plate	2-gang	ss	knob	ETL	70V/100V speaker line
150LVCS-DSB	150 W	3 dB	autoformer	---	decorator wall plate	2-gang	ss / black	knob	ETL	70V/100V speaker line

\* 33dB total; 2 steps of 6dB each before off.  
ss = stainless steel

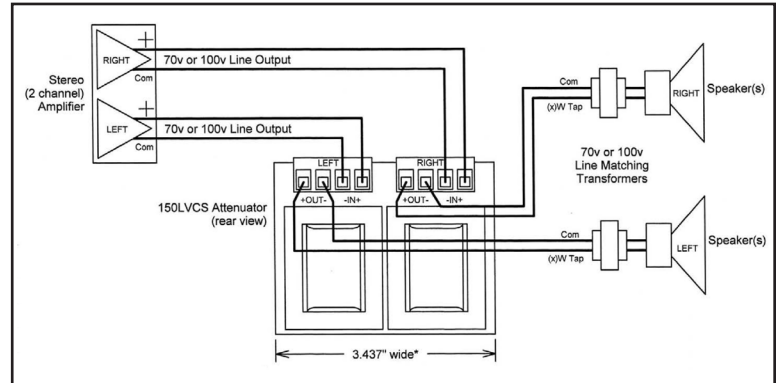
THIS SPEC

## DRAWINGS

### SCHEMATIC (ONE CHANNEL):



### WIRING:



### APPLICATIONS:

