

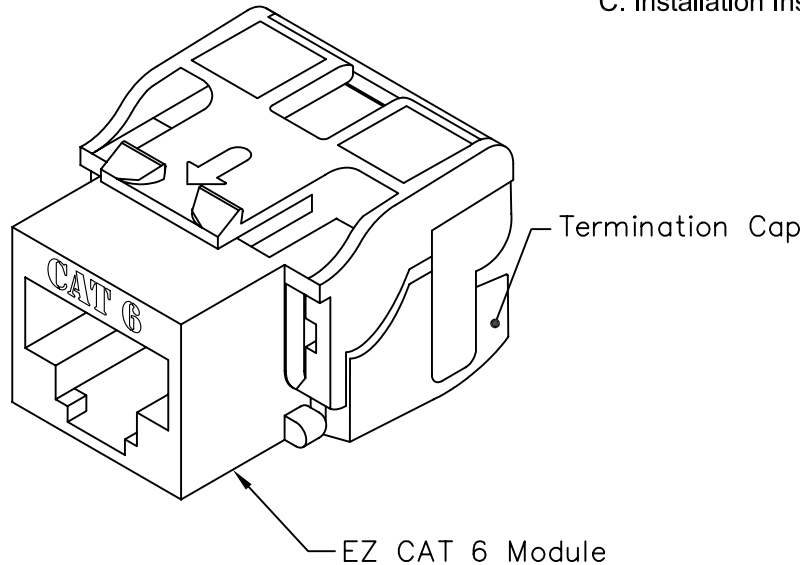
# 8P8C EZ Category 6 Module

## PRODUCT SPECIFICATION



### Package includes:

- A. 8P8C EZ Category 6 Module, 1 pc
- B. Termination Cap, 1 pc
- C. Installation Instructions, 1 sheet



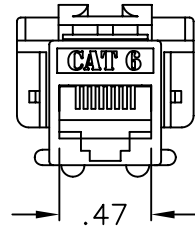
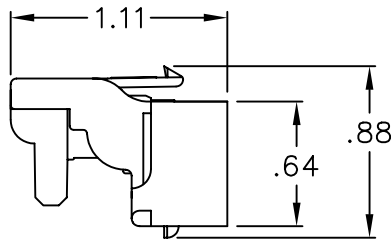
### Features and Benefits:

- CAT 6 rated connectors provide excellent performance for data networks requiring maximum speed and bandwidth
- PCB technology provides maximum performance and superior signal quality
- Enhanced crosstalk cancellation reduces return loss and improves performance by rejecting noise and unwanted signals
- Exceeds ANSI/TIA/EIA-568-B.2-1 Category 6 connecting hardware requirements
- Engineered to provide 110 IDC in-line, in-sequence termination reducing installation time
- One piece termination cap allows for a quick and easy termination
- Includes an integrated TIA-568A/B color wiring diagram
- Backwards compatible to all lower rated category components
- Compatible with all IC107 faceplates, inserts, surface mount boxes, and blank patch panels
- Compatible with all IC108 furniture faceplates, bezels, and surface mount boxes
- Used with ICC Category 6 ICPCS6 series patch cords and 110 punch down tool ICACSPDT00
- Available in almond, black, blue, gray, green, ivory, orange, purple, red, white, and yellow
- Installation instructions #MSR-0355 included
- UL listed

### MODULE, CAT 6, EZ

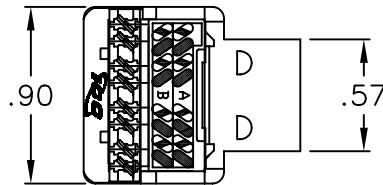
|          |            |          |   |  |
|----------|------------|----------|---|--|
| ITEM NO. | IC1078L6XX | REV.     | B |  |
| DWG NO.  | PS1078L600 | PAGE NO. | 1 |  |

CUSTOMER CARE / TECHNICAL SUPPORT \* CSR@ICC.COM / 888-ASK-4-ICC (275-4422) \* 14700 Alondra Blvd., La Mirada, CA 90638 \* www.icc.com



| T568B WIRING |              |
|--------------|--------------|
| 5            | WHITE/BLUE   |
| 4            | BLUE         |
| 1            | WHITE/ORANGE |
| 2            | ORANGE       |
| 3            | WHITE/GREEN  |
| 6            | GREEN        |
| 7            | WHITE/BROWN  |
| 8            | BROWN        |

| T568A WIRING |              |
|--------------|--------------|
| 5            | WHITE/BLUE   |
| 4            | BLUE         |
| 1            | WHITE/GREEN  |
| 2            | GREEN        |
| 3            | WHITE/ORANGE |
| 6            | ORANGE       |
| 7            | WHITE/BROWN  |
| 8            | BROWN        |



**NOTE: UNLESS OTHERWISE SPECIFIED**

1. CAT 6 MODULE:

A. ELECTRICAL:

- CURRENT RATING: 1.5 AMPS
- INSULATION RESISTANCE: 500 MOHMS MIN
- CONTACT RESISTANCE: 20 MOHMS MAX
- DC RESISTANCE: 0.1 OHM MAX
- TRANSMISSION PERFORMANCE EXCEEDS CATEGORY 6 CONNECTING HARDWARE REQUIREMENTS SPECIFIED IN TIA/EIA-568-B.2-1 WHEN USED WITH COMPATIBLE HORIZONTAL CABLE

B. MECHANICAL:

- PLUG INSERTION LIFE: 750 CYCLES MIN
- PLUG & JACK CONTACT FORCE: 100 GRAMS MIN USING FCC APPROVED PLUG
- PLUG RETENTION FORCE: 30 LBS MIN
- TEMPERATURE: -40° TO 150° F (-40° TO 68° C)

C. PHYSICALS:

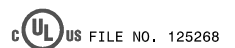
- HOUSING: ABS, UL 94V-0
- JACK WIRING: 50 MICRO INCHES OF GOLD OVER 100 INCHES OF NICKEL
- CONNECTOR: INSULATION DISPLACEMENT CONNECTOR (IDC) ACCEPTS 23~24 AWG SOLID WIRE

D. COLORS: XX: AL-ALMOND, BK-BLACK, BL-BLUE, GN-GREEN, GY-GRAY, IV-IVORY, OR-ORANGE, PR-PURPLE, RD-RED, WH-WHITE, & YL-YELLOW

2. TERMINATION CAP:

- A. MATERIAL: PC, UL 94V-0
- B. COLOR: CLEAR

| CATEGORY 6 CONNECTING HARDWARE REQUIREMENTS |      |      |      |      |      |      |      |       |      |      |      |      |
|---|------|------|------|------|------|------|------|-------|------|------|------|------|
| FREQUENCY (MHz)                             | 1.0  | 4.0  | 8.0  | 10.0 | 16.0 | 20.0 | 25.0 | 31.25 | 62.5 | 100  | 200  | 250  |
| NEXT LOSS (db)                              | 75.0 | 75.0 | 75.0 | 74.0 | 69.9 | 68.0 | 66.0 | 64.1  | 58.1 | 54.0 | 48.0 | 46.0 |
| FEXT LOSS (db)                              | 75.0 | 71.1 | 65.0 | 63.1 | 59.0 | 57.1 | 55.1 | 53.2  | 47.2 | 43.1 | 37.1 | 35.1 |
| RETURN LOSS (db)                            | 30.0 | 30.0 | 30.0 | 30.0 | 30.0 | 30.0 | 30.0 | 30.0  | 28.1 | 24.0 | 18.0 | 16.0 |
| INSERTION LOSS(db)                          | 0.10 | 0.10 | 0.10 | 0.10 | 0.10 | 0.10 | 0.10 | 0.11  | 0.16 | 0.20 | 0.28 | 0.32 |



**MODULE, CAT 6, EZ**

|          |            |          |   |
|----------|------------|----------|---|
| ITEM NO. | IC1078L6XX | REV.     | B |
| DWG NO.  | PS1078L600 | PAGE NO. | 2 |



CUSTOMER CARE / TECHNICAL SUPPORT \* CSR@ICC.COM / 888-ASK-4-ICC (275-4422) \* 14700 Alondra Blvd., La Mirada, CA 90638 \* www.icc.com