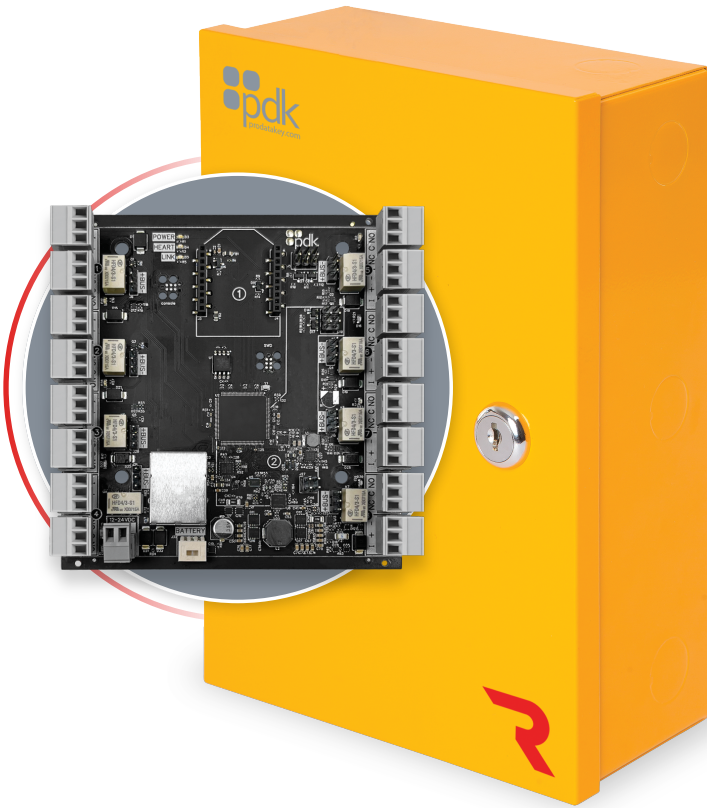




Red | a8

aux eight **controller**

Quick Start Guide



View the user manual here:
www.prodatakey.zendesk.com

PN: A8

www.prodatakey.com
801.317.8802

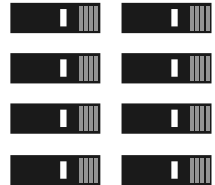
1. Package Contents



Red Aux 8
Auxiliary Controller (1)



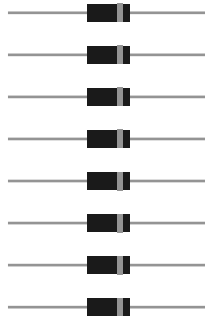
Battery Leads (1)



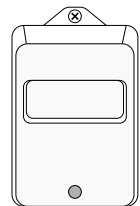
Jumpers (8)



Can Lock (1)

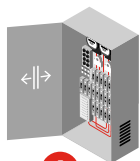


Diodes (8)

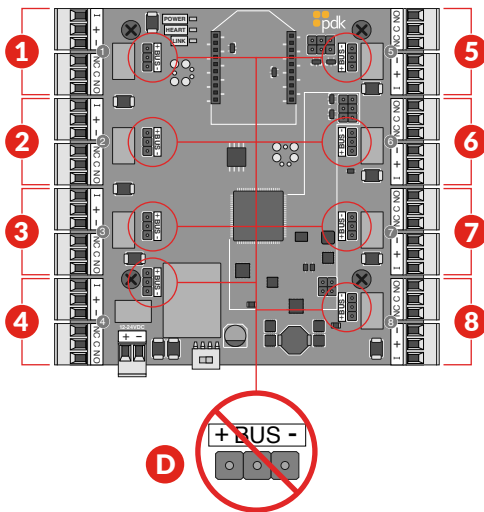
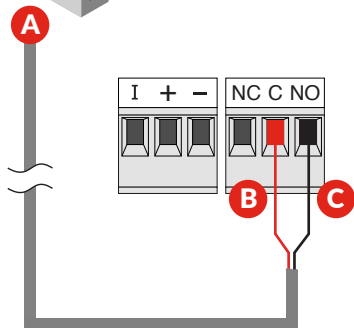


Transformer (1)
14 VDC, 5 Amp

2. Elevator Floors

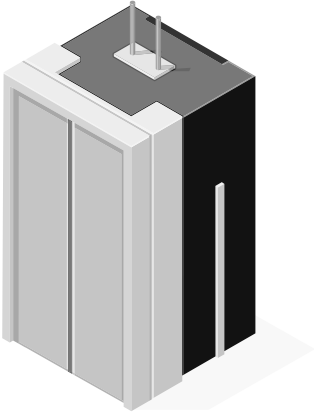


Elevator Control Panel



- A Elevator Control Panel** - Wire each floor trigger to the Aux 8 relay ports using an 18/2 wire.
- B Common** - Connect one wire from the elevator control panel into common on the relay input.
- C NO** - Connect the extra leg from the elevator control panel into Normally Open on the Aux 8 relay port.
- D Jumper Block** - Because the device is wired as a dry contact, do not place a jumper on the jumper block.

3. Elevator Software Programming



A Elevator Reader Programming

1. Select **Configuration** within pdk.io
2. Click the discovery tab
3. Select the magnifying glass icon
4. Hover over the controller where your reader has been installed and select **"add port"**
5. Select **"elevator"** from the wizard
6. Add the elevator car reader by selecting **"primary reader"**
7. Follow the wizard to bring the elevator reader online

B Elevator Floor Relay Programming

1. Select **Configuration** within pdk.io
2. Click the discovery tab
3. Select the magnifying glass icon
4. Hover over your Aux 8 controller and select **"add port"**
5. Select **"elevator"** from the wizard
6. Add an elevator floor by selecting **"floor relay"**
7. Follow the wizard to bring the elevator floor online

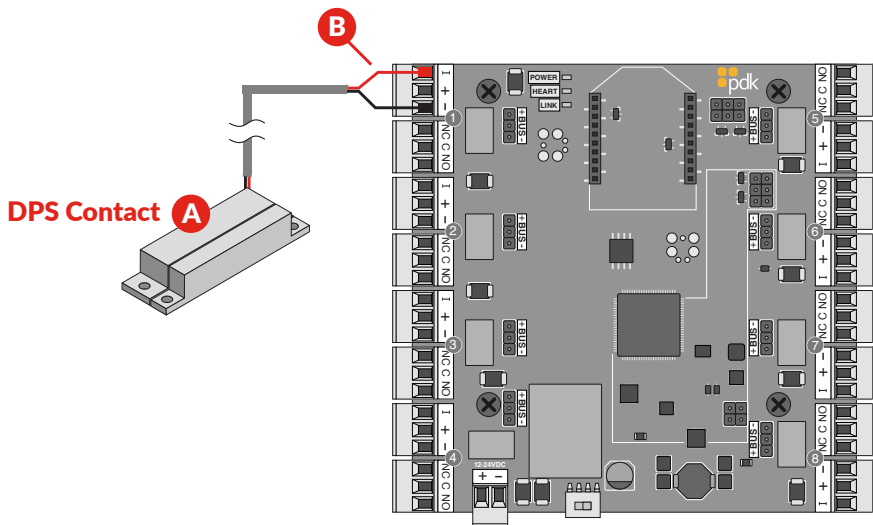
C Elevator Floor Access Groups

1. Select **Elevators** within pdk.io
2. Click the **plus** button to create a new elevator floor group
3. Name the group
4. Choose an elevator car reader
5. Select the floors that will be accessible for all members of the group
6. Save the Group

D Assigning Permission to Floors

1. Add permissions within **People** or **Groups** within pdk.io
2. Create a new **Rule** for a person or group
3. Click on the tab titled **"elevator"**
4. Set the schedule
5. Select the Floor Group
6. Save the Rule

4. Input Connection

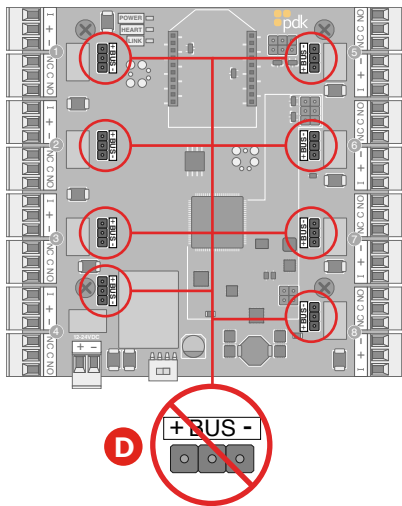
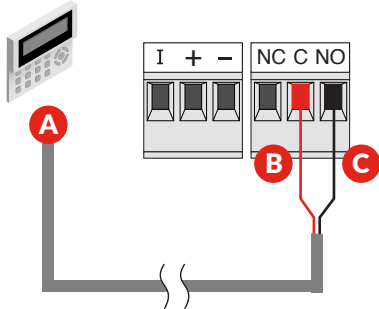


A Device(s) - A variety of devices can be wired into any of the Aux 8's input ports for reporting purposes. Examples include door position sensors and push buttons.

B Aux input - The input reports in pdk.io as a DPS (A) input. When initiated, a rule can be set up to trigger events or outputs based on this input trigger

6. Dry Contact Output

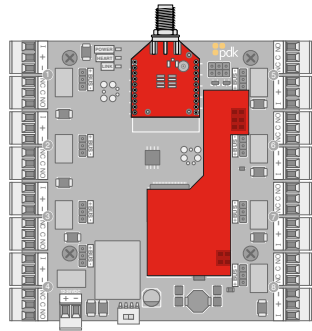
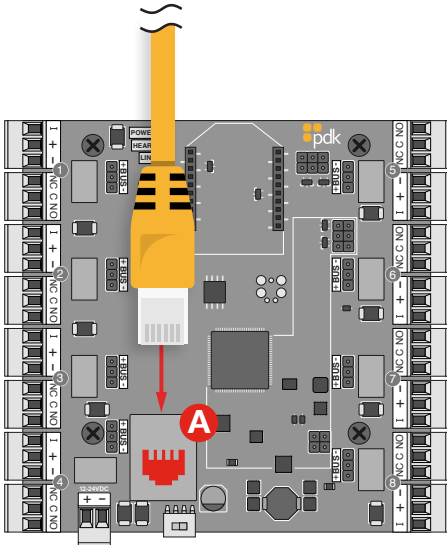
Aux Device
alarm panel, lighting
HVAC, etc.



- A Device** - A variety of devices can be wired into any of the Aux 8's relay ports to trigger a specific action. Examples include alarm panel integration, lighting, and HVAC.
- B Common** - Connect one wire from the device into common on the relay
- C NO** - Connect the extra leg from the elevator control panel into Normally Open on the Aux 8 relay port.
- D Jumper Block** - Because the device is wired as a dry contact, do not place a jumper on the jumper block.

7. Communication Connection

- A Ethernet** - All Red controllers come with a built-in RJ45 connection for network connectivity. Once connected the Red controller is **Self-Discoverable** from pdk.io using IPV6. Alternatively, you may use IPV4 or assign a static IP using pdk.io if desired.



- * **Wireless** (PN: RMW) and **PoE** (PN: RMPOE) module kits can be purchased for optional communication methods.

Reference Guide

Strike Installation - To control readerless doors using an electric strike, refer to wiring diagrams at www.prodatakey.zendesk.com

Mag Lock & REX Installation - To control readerless doors using a maglock and request-to-exit device, refer to wiring diagrams at www.prodatakey.zendesk.com

Fire Input - To integrate the fire system into a controller, refer to wiring diagrams at www.prodatakey.zendesk.com

Programming - After the controller is connected, access the configuration software as instructed in the programming manual available at www.prodatakey.zendesk.com

UL 294 Compliance - All equipment must meet appropriate UL certifications. For UL-listed installations, all cable runs must be less than 30 meters (98.5')

Amperage Limits - The Aux 8 delivers an amperage limit of 4 amps for all electrified hardware plugged into the board

Part Number - A8

PDK Technical Support

Phone: 801.317.8802 option #2

Email: support@prodatakey.com