



Philips  
Professional TV

75" B-Line  
powered by Android™



75BFL2214

## Professional productivity

with Chromecast built-in and HDMI hotplug

Boost productivity. Philips B-Line seamlessly integrates into corporate systems for efficient control. Chromecast built-in ensures presentations run smoothly with instant wireless media sharing from Windows, Apple and Android™ devices.

### Smart control features

- Compatible with Extron and Neets systems
- Crestron Connected certified system integration
- Install and manage apps remotely with AppControl
- Operate, monitor and maintain via CMND & Control
- Scheduler for content playback at selected times
- Can tune TV channels, including ATSC, QAM and IPTV

### Vibrant and efficient

- Chromecast built-in for wireless content sharing
- HDMI hotplug detection with auto on/off function
- Google Play Store access for apps and media
- Supports Pro:Idiom™ encrypted content
- Superb audio quality without external speakers
- UHD resolution for attention grabbing content
- Android updates provide the latest functionality

# PHILIPS

# Highlights

## Powered by Android

Android-powered Philips Professional Displays are fast, versatile and easy to navigate. The displays are optimised for native Android apps and you can install web apps directly to the display too. Automatic updates ensure apps stay up to date.

## Chromecast built-in

Make meetings run smoother and faster with seamless wireless connectivity to the big screen from any Apple, Windows or Android™ device. Chromecast built-in enables instant casting of presentations and media from mobiles, laptops, and tablets in up to 4K resolution. It's cost-effective, requires no extra hardware, and is secure for corporate use.

## Crestron Connected certified

Connect this Philips Professional Display to your Crestron network for full remote control via your laptop, desktop or mobile device. Switch

the display on and off, schedule content, manage settings, and easily connect external devices. Crestron Connected® provides a fast, reliable and secure enterprise level solution for wireless and wired content sharing from Apple, Windows, Android and Linux devices.

## Google Play Store access

Full access to the entire Google Play Store makes it easy to add apps, games, music, movies, and more to your Philips Professional Display. New business tools and extra entertainment options are added to the catalogue daily, ensuring that you always have access to the latest global trends.

## HDMI hotplug detection

When wireless connectivity is not an option, HDMI hotplug detection recognises direct cabled connections from presentation sources and automatically handles source changes and on/off functioning.

## AppControl

Take full, centralised control of the apps installed on your Philips Professional Displays. AppControl lets you install, delete, and manage apps on selected Displays or your entire network so that you can offer personalized experiences to your guests and customers-no matter how many displays you are managing.

## CMND & Control

Run your display network over a local (LAN or RF) connection. CMND & Control allows you to perform vital functions like updating software and settings, as well as monitoring display status. Whether you're in charge of one TV or more, CMND & Control makes managing your fleet easy.

## Scheduler for content playback

Built-in scheduler makes it easy to launch content and apps based on time of day for a more engaging environment with better results.

# Specifications

## Picture/Display

- Display: 4K Ultra HD LED
- Diagonal screen size (inch): 75 inch
- Panel resolution: 3840x2160p
- Brightness: 340 nit
- Contrast ratio (typical): 1200:1
- Operation Mode: Landscape, 16/7

## Audio

- Sound output Power: 20 (2x10) W
- Speakers: 2.0, Down Firing
- Sound Features: DTS-HD, Dolby Atmos Compatible, Dolby MS12D, AC-4, DTS Studio Sound
- External speaker out: 1.5W Mono 8 Ohm

## Design

- Colour: Black

## Android TV

- Memory size(Flash): 16GB\*
- OS: Android TV™ 9 (Pie)
- Pre-installed apps: YouTube, Google Play Store\*, Google Play Movies, Google Play Games, YouTube Music

## Tuner/Reception/Transmission

- IP Playback: Multicast, Unicast, HLS, OTT App Channels
- Analog TV: NTSC
- Digital TV: 8VSB ATSC; 256QAM Cable

## Wireless Connectivity

- Wireless LAN: 802.11 ac, Wifi-Direct

## Connectivity Side

- USB1: USB 3.0
- Headphone out: Mini-Jack
- HDMI1: HDMI 2.0 with HDCP 2.2
- HDMI2: HDMI 2.0 with HDCP 2.2

## Connectivity Bottom

- Ethernet (LAN): RJ-45
- Antenna: F-Type
- External power: 12V, max 1.5A

- Digital Audio out: Optical
- External speaker out: Mini-Jack
- USB2: USB 2.0
- HDMI3: HDMI 2.0 with HDCP 2.2
- HDMI4: HDMI 2.0 with HDCP 2.2

## Connectivity Enhancements

- HDMI: ARC (all ports), Auto Input Selection
- EasyLink (HDMI CEC): One touch play, System Standby, RC pass through, system audio control

## Corporate Features

- Wired Presentations: Auto Input Selection, Auto Power ON, Auto Power OFF
- Wireless Presentations: Chromecast built-in, Secure Sharing, Network-managed Sharing
- Signage Functions: CMND&Create, Scheduler, Banners
- Control: Crestron Connected (v2), Extron, SICP over IP
- Customizable: Home Screen, Location Name, Device Name

## Professional TV Features

- Professional Mode: Installation Menu Lock, Menu Lock, Switch-ON Settings Control, Volume Limitation
- Convenience: >40 Supported Menu Languages, Google Account Login, Google Assistant\*, Weather Forecast
- Control: AppControl, CMND IP Remote Management, JAPIT HTML5 Control, JEDI Android API Control
- Safety: Double Isolation Class II, Flame Retardant
- DRM: Pro:Idiom, VSecure

## Multimedia

- Video playback supported: Formats: H.264/MPEG4 AVC, MPEG1, MPEG2, MPEG4, WMV9/VC1, HEVC, Containers: AVI, MKV, VP9
- Subtitle formats supported: SRT, SMI, TXT
- Music formats supported: MP3, AAC, WAV, WMA (v2 up to v9.2), WMA-PRO (v9 and v10)
- Picture formats supported: JPG, PNG, BMP, GIF

## Supported Display Resolution

- USB, LAN: HEVC: up to 3840x2160@60Hz, Others: up to 1920x1080p@60Hz
- HDMI: Up to 3840x2160p@60Hz

## Accessories

- Included: Remote Control 22AV1905A/12, 2x AAA batteries, Power Cord
- Optional: Setup RC 22AV9574A/12

## Power

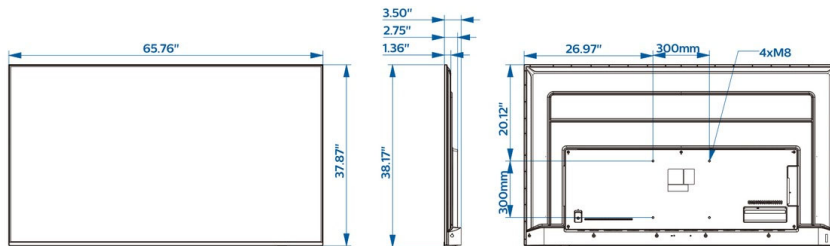
- Mains power: AC 110-240V; 50-60Hz
- Maximum Power Consumption: 220 W
- Standby power consumption: <0.5 W
- Power Saving Features: Eco mode, Auto switch-off timer
- Ambient temperature: 0°C to 40°C (32°F to 104°F)

## Green Specifications

- Energy Star

## Dimensions

- Set dimensions in inch (W x H x D): 65.76 x 37.87 x 2.75/3.50 inch
- Product weight (lb): 73.85 lb
- Wall mount compatible: 300 x 300 mm, M8



Issue date 2023-01-18

Version: 2.1.1

12 NC: 8670 001 78166  
UPC: 8 71886 30024 5

© 2023 Koninklijke Philips N.V.  
All Rights reserved.

Specifications are subject to change without notice.  
Trademarks are the property of Koninklijke Philips N.V.  
or their respective owners.

[www.philips.com](http://www.philips.com)

\* Availability of features will depend on implementation chosen by integrator.  
\* Philips does not guarantee the availability or continuity of correct functioning of apps.  
\* Actual free memory may be less due to device pre-configuration  
\* This television contains lead only in certain parts or components where no technology alternatives exist in accordance with existing exemption clauses under the RoHS Directive.  
\* Android, Google Play and Chromecast are trademarks of Google LLC  
\* Google Cast requires access to Google servers.  
\* Availability of Google Assistant is depending on Country and Language settings. To use Google Assistant, an optional remote control with voice function must be used.  
\* Typical on-mode power consumption measured according to IEC62087 Ed 2. The actual energy consumption will depend on how the television is used.