



CAST LIGHTING

1120-A Goffle Road
Hawthorne, NJ 07506

Ph:(973)423-2303 Fax:(973)423-2304

Model # CPWP2

12-26V AC, DC Low Voltage Wall Pack Security Light

IMPORTANT SAFETY INSTRUCTIONS:

- Please read carefully before installing. Save these instructions.
- Consult with a qualified electrical contractor and local electrical codes before installing any electrical product.
- Clean fixture with mild soap. Do not use acid or any other solvent base cleaner.
- Do not submerge fixture in water.
- All fixtures must be installed 10 feet (3.05m) away from a pool, spa or fountain.
- Use fixture with low-voltage outdoor lighting system only.

WARNING: INSTRUCTION PERTAINING DO NOT OVERLOAD LOW VOLTAGE CABLE or TRANSFORMER

ASSEMBLY INSTRUCTIONS: Your fixture is ready to be connected using your preferred wiring method right out of the box. An additional accessory of a junction box is required for the installation(Optional).Use Carlon Junction Box Model # E979DFN. For surface/flush to a wall mount, wire access "mouse" hole are provided on each side of the fixture to accommodate low voltage wire.

INSTALLATION/MOUNTING INSTRUCTIONS:

Note: We recommend, when installing any low Voltage fixture, that you have the following: **Voltage Meter, Wire Nuts, Amp Probe, Basic Hand Tools for Adjustment.**

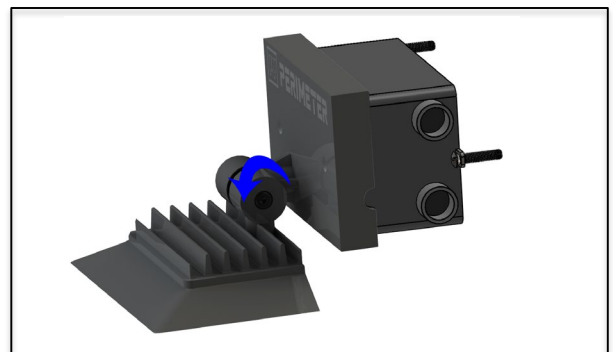
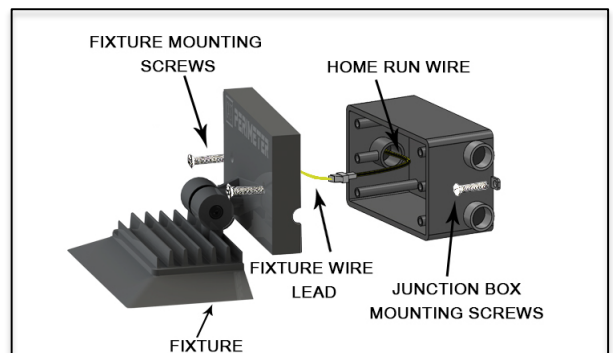
INSTALLATION/MOUNTING & WIRING STEPS:

1. To prevent electrical shock, disconnect transformer from electrical supply before service.
2. Place/Set junction box on a hard surface using screws in desired location.
3. Run wire lead to the desired connection point with the main wire lead running to the transformer, keeping most of the excessive wire at the junction box.
4. Connect fixture wire lead to main wire lead from the transformer using desired wire connection.
5. Mount the fixture on the junction box using mounting screw.
6. For best results mount fixture ten feet (305cm) off grade spacing fixtures twenty feet (610cm) apart.
7. Install fixture head level. Fixture head can be adjusted down to reduce glare or up to increase glare.

WARNING: INSTRUCTION PERTAINING TO A RISK OF FIRE, OR INJURY TO PERSONS:

- Light fixture is HOT. Light fixture is hot when illuminated: do not touch when the fixture is ON.
- Turn off/unplug electrical power before modifying the lighting system.
- Allow fixture to cool before touching.
- Do not touch hot lens, guard, or enclosure.
- Keep away from potential flammable materials, structure, and/ or landscapes.

With Carlon Junction Box



Wall Mount



For Questions on how to obtain the proper cable or connectors, call (973) 423- 2303