

## KOF-OPT-SHELF

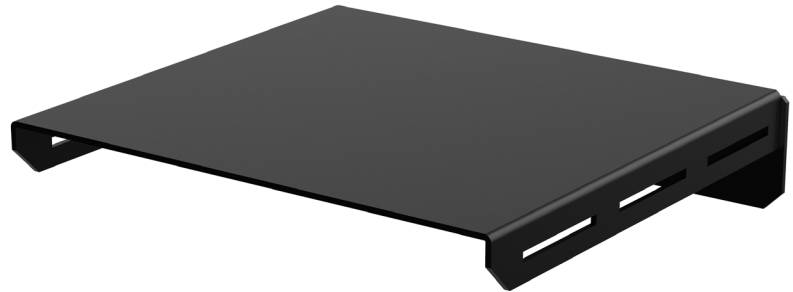


All Weather Rated

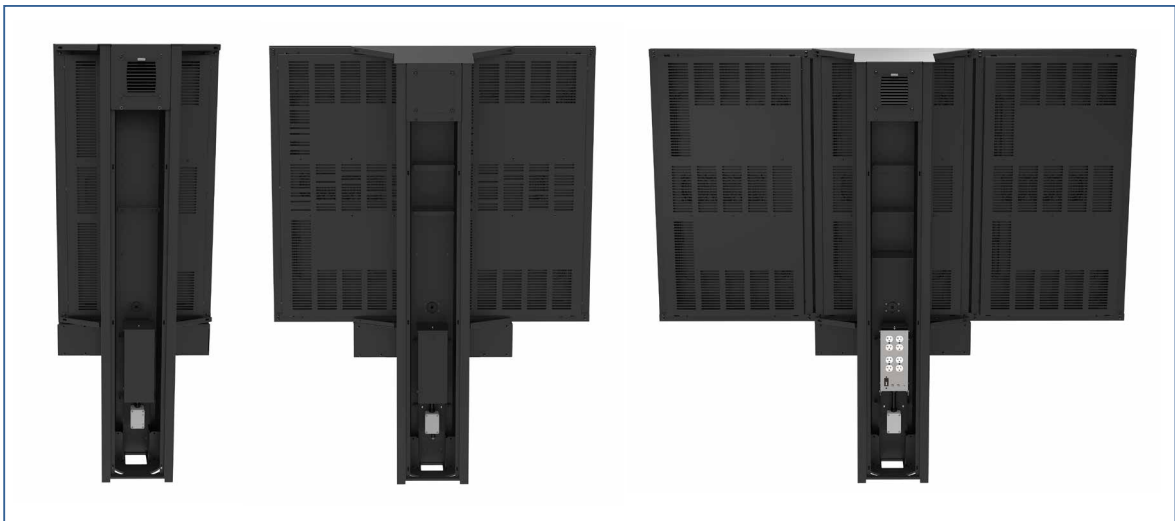


**Max Load**  
10lb (4.5kg)  
per shelf

- Provides convenient storage for media player components and accessories within the ODMB pedestal
- Media players can be strapped to shelf utilizing available slots on sides of shelf



*Please note, when a media player is installed on the KOF-OPT-SHELF within the ODMB pedestal, you must integrate the Media Player Storage Fan (KOF-OPT-FAN) to exhaust heat and manage internal temperature.*



Peerless-AV® Outdoor Digital Menu Boards (KOF555-1/2/3) with Internal Media Player Shelves (KOF-OPT-SHELF)

Please visit [peerless-av.com/en-us/patents](http://peerless-av.com/en-us/patents) for patent information.

## Model Numbers

**KOF-OPT-SHELF** Internal Media Player Shelf for Peerless-AV® KOF555-1/2/3 Outdoor Digital Menu Boards

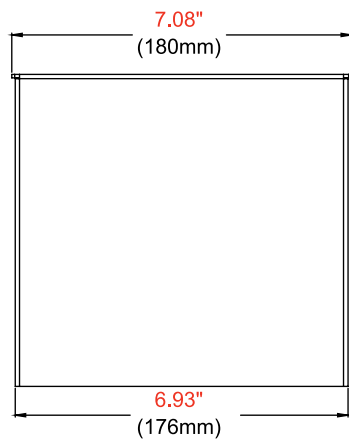
## Product Specifications

MODEL NUMBERS	DIMENSIONS (W x H x D)	PRODUCT WEIGHT	FINISH	AVAILABLE COLORS
KOF-OPT-SHELF	7.08" x 1.59" x 6.43" (180 x 40 x 163mm)	1.5lb (0.68kg)	Textured	Black

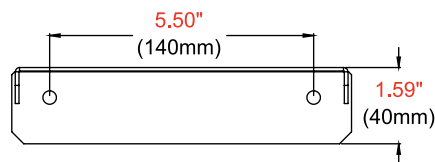
## Package Specifications

MODEL NUMBERS	PACKAGE SIZE (W x H x D)	PACKAGE SHIP WEIGHT	PACKAGE UPC CODE	PACKAGE CONTENTS	UNITS IN PACKAGE
KOF-OPT-SHELF	9.75" x 2.25" x 8.50" (248 x 57 x 216mm)	2.0lb (0.9kg)	735029344148	Shelf	1

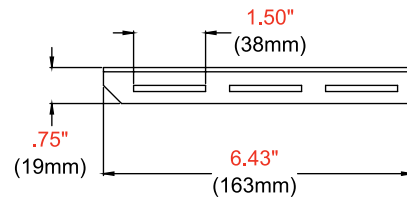
All dimensions = inch (mm)



**TOP VIEW**



**FRONT VIEW**



**SIDE VIEW**

## Architect Specifications

The Internal Media Player Shelf shall be a Peerless-AV® model KOF-OPT-SHELF and shall be located where indicated on the plans. Assembly and installation shall be done according to instructions provided by the manufacturer.

Visit [peerless-av.com](http://peerless-av.com) to see the complete line of AV solutions from Peerless-AV, including outdoor displays, kiosks, display mounts, projector mounts, carts/stands, and a full assortment of accessories.

**Peerless-AV**  
2300 White Oak Circle  
Aurora, IL 60502 USA  
  
**(800) 865-2112**  
**(630) 375-5100**  
**Fax: (800) 359-6500**

**Peerless-AV EMEA**  
Unit 3 Watford Interchange  
Colonial Way, Watford  
Herts, WD24 4WP  
United Kingdom  
**+44 (0) 1923 200100**  
**Fax: +44 (0) 1923 200101**

**Peerless-AV Latin America**  
Av. de las Industrias 413  
Parque Industrial Escobedo  
General Escobedo, N.L.,  
México, 66062  
**+52 (81) 8384-8300**  
**Fax: +52 (81) 8384-8360**

**peerless-AV®**  
Driving Technology Through Innovation

LIT-1887 rev.1