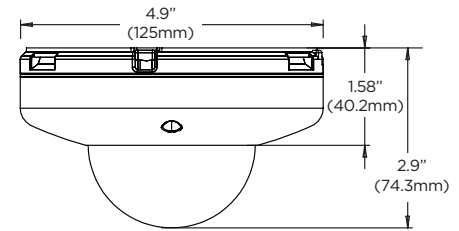




## Dimensions

Unit: Inch (mm)



## Summary

This MEGApix® IVA+™ IP camera is your gateway to powerful video analytics features. It is NDAA/TAA compliant and provides 5MP resolution at real-time 30fps. The MEGApix IVA+ cameras have a powerful engine to detect and classify people, vehicles and objects in real-time with support for logical rules. This camera includes 4.0, 6.0 and 8.0mm fixed lens options, simultaneous H.265/H.264/MJPEG codec support and Star-Light Plus™ color in near-total darkness technology for quality video in any lighting condition, all in an IP66-rated, IK-10 impact resistant ultra low-profile vandal dome housing. All MEGApix® cameras are ONVIF conformant, assuring their successful integration with any open platform solution on the market.

## Features

- 5MP 1/2.8" image sensor at real-time 30fps
- Star-Light Plus™ color in near-total darkness technology
- Intelligent Video Analytics (IVA) with extended features (IVA+)
- Seamless integration and control of IVA rules with DW Spectrum® IPVMS
- Reduce false alarms
- Increase your recording storage with logic rules and smart recording
- 4.0mm fixed lens (DWC-MPF5Wi4TW)
- 6.0mm fixed lens (DWC-MPF5Wi6TW)
- 8.0mm fixed lens (DWC-MPF5Wi8TW)
- True Wide Dynamic Range (WDR)
- Triple codecs (H.265, H.264, MJPEG) with simultaneous streaming
- 50' Smart IR™ with intelligent camera sync
- Ultra low-profile vandal dome camera
- Smart DNR™ 3D digital noise reduction
- True day/night mechanical IR cut filter
- Programmable privacy zones
- Auto gain control (AGC)
- Auto white balance (AWB)
- Motion detection
- Two-way audio
- Micro SD/SDHC/SDXC class 10 card slot (card not included)
- PoE class 2 and DC12V
- UL listed
- NDAA/TAA compliant
- IP66 environmental-rated dust-tight and water-resistant
- IK 10-rated impact-resistant
- 5 year warranty



## Specifications



IMAGE	
Image sensor	5MP 1/2.8" CMOS
Total pixels	2592 (H) X 1944 (V)
Minimum scene illumination	0.16 lux (color) 0.0 lux (B/W)
Video output	Local video output CVBS 1.0V p-p (75Ω), 16:9 aspect ratio
LENS	
Focal length	4.0mm, F2.0 (DWC-MPF5Wi4TW) 6.0mm, F2.0 (DWC-MPF5Wi6TW) 8.0mm, F2.0 (DWC-MPF5Wi8TW)
Lens type	Fixed lens
HFOV / VFOV	82.3° / 43° (DWC-MPF5Wi4TW) 51.9° / 29° (DWC-MPF5Wi6TW) 37.8° / 22° (DWC-MPF5Wi8TW)
IR distance	50ft range
I/O	
Audio in/out	1/1
Audio compression	G.711
Alarm in/out	1/1
OPERATIONAL	
Intelligent Video Analytics	IVA license: intrusion, line crossing, counting line, loitering, enter, exit, tamper IVA+ license: object removed, tailgating, direction, stopped, appear, disappear, object left
Shutter mode	Auto, manual, anti-flicker, slow shutter
Shutter speed	1/15 - 1/32000
Slow shutter	1/2, 1/3, 1/5, 1/6, 1/7.5, 1/10
Auto gain control	Auto
Day and night	Auto, day (color), night (B/W)
Smart DNR™ 3D digital noise reduction	3D-DNR
Wide Dynamic Range (WDR) dB	True WDR, 120dB
Privacy zone	16 programmable privacy masks
Mirror and flip	Yes
Alarm notifications	Notifications via e-mail notifications, FTP, alarm output and SD card recording
Memory slot	Micro SD / SDHC / SDXC (card not included)
NETWORK	
LAN	RJ45 (10/100Base-T)
Video compression type	H.265, H.264, MJPEG
Resolution	H.265: 2592x1944, 2304x1296, 2.1MP/1080p, 720p, VGA, D1, CIF H.264: 2592x1944, 2304x1296, 2.1MP/1080p, 720p, VGA, D1, CIF MJPEG: 2.1MP/1080p, 720p, 800x600, VGA, 768x432, D1, CIF
Frame rate	Up to 30fps at all resolutions
Video bitrate	100kbps - 10Mbps, multi-rate for preview and recording
Bitrate control	Multi-streaming CBR/VBR at H.264, H.265 (controllable frame rate and bandwidth)
Streaming capability	Dual-stream at different rates and resolutions
IP	IPv4, IPv6
Protocol	TCP/IP, UDP, AutoIP, RTP (UDP/TCP), RTSP, NTP, HTTP, HTTPS, SSL, DNS, DDNS, DHCP, FTP, SMTP, ICMP, SNMPv1/v2/v3 (MIB-2), ONVIF
Security	HTTPS (TLS), IP filtering, 802.1x, digest authentication (ID/PW)
ONVIF conformance	Yes
Web viewer	OS: Windows®, Mac® OS, Linux® Browser: IE®, Google Chrome®, Mozilla Firefox®, Safari® NOTE: Chrome browser is recommended for IVA configuration
Video management software	DW Spectrum® IPVMS
ENVIRONMENTAL	
Operating temperature	-4°F - 122°F (-20°C - 50°C)
Operating humidity	10-90% (non-condensing)
IK and IP rating	IK10 impact-resistant, IP66-rated
Other certifications	UL listed, CE, FCC, RoHS
ELECTRICAL	
Power requirement	DC 12V, PoE (IEEE 802.3af Class 3). (Adapter not included)
Power consumption	DC12V: max 5.9W PoE: max 7.2W
MECHANICAL	
Material	Aluminum vandal housing, polycarbonate dome
Dimensions	4.9" x 2.9" (125 x 74.3 mm)
Weight	0.92 lbs (0.42kg)
Warranty	5 year warranty

## Accessories (optional)



DWC-VFCMW  
Wall mount  
bracket



DWC-VFWMW  
Junction box



DWC-VFJUNCW  
Ceiling mount  
bracket