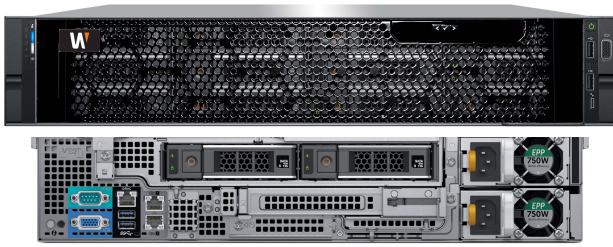


WRR-P-S202x1 Series

Wisenet WAVE Network Video Recorder



The WRR-P-S202x1 series offers an affordable and reliable 2U rackmount solution for any entry level deployment. Up to 144TB (Linux) / 224TB (Windows) of raw video-optimized storage is provided by 24/7 duty cycle SATA drives.

The latest Intel® Xeon® Processor allows for high powered computing power, and 16GB of DDR4 RAM provides the system resources to scale as needed.

A dedicated solid state drive for applications and the operating system enables fast boot and load times. Supports RAID 0, 1, 5, 6, and 10 storage configuration allowing for increased reliability, and a 5-year, on-site, Next Business Day, Keep Your Hard Drive warranty ensures peace of mind.

Each server is pre-configured with Wisenet WAVE VMS and preloaded with 4 Professional licenses to ensure quick and easy deployment with minimum setup time.

Key Features

- Preloaded and configured with Wisenet WAVE video management system
- 470 Mbps of recording throughput
- Pre-configured for RAID 6
- Up to 144TB / 224TB of Raw Storage
- Supports RAID 0, 1, 5, 6, 10 configurations
- SSD & 24/7 Duty Cycle SATA Drives
- IPMI Management
- Includes USB mouse and keyboard
- Includes Sliding Rack Rail with Cable Management Arm
- 5-Year, On-site, Next Business Day, Keep Your Hard Drive Warranty
- Supports Wisenet and ONVIF conformant IP cameras
- Dedicated GPU for client application for easy configuration



WRR-P-S202W1 / WRR-P-S202S1 / WRR-P-S202L1

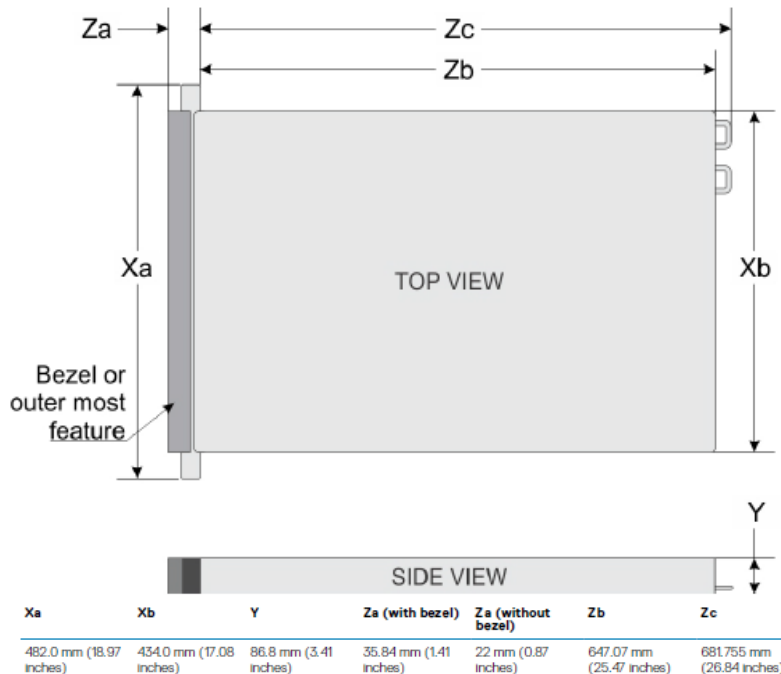
SYSTEM	
Video Management Software	Wisenet WAVE
Recording Bandwidth	Up to 470 Mbps
Pre-loaded Licenses	4 x Wisenet WAVE Professional License
OS Drive Bays	2 x 240GB Dual RAID 1 SSD (internally mounted)
Data Drive Bays	12 x 3.5" Front Hot Swappable Bays / 2 x 3.5" Rear Hot Swappable Bays
Data Storage	Up to 144TB (Linux) / 224TB (Windows) raw storage
RAID Support	RAID 0, 1, 5, 6, 10, 8Gb NV Cache (RAID 6 default configuration)
Network Interface	4 x RJ45 Gigabit Ethernet
Processor	1 x Intel® Xeon® Processor
Memory	16 GB, 2 x 8GB DDR4
Operating System	Windows 10 Professional / Windows Server 2019 Standard / Ubuntu 18.04 LTS
Video Outputs	NVIDIA Quadro P400 3x MiniDisplay Port, 1 x VGA
USB Ports	2 x USB 3.0 (Rear), 2 x USB 2.0 (Front), 1 x USB 3.0 (Internal)
Other Ports	Serial
Keyboard & Mouse	Included
Sliding Rail Kit	Included, with Cable Management Arm

MECHANICAL / ELECTRICAL / ENVIRONMENTAL		
Mechanical	Form Factor	2U rack mount chassis
	Color / Material	Black / Metal
	Dimensions (WxDxH)	19" (482.6mm) x 28.15" (646mm) x 3.4" (86.8mm)
	Weight	73 lbs. (33.1 kg)
Electrical	Power Supply	(2) 750W 80 Plus Platinum
	Power Input	100 ~ 240V AC
	Power Consumption	Maximum 788W
Environmental	Operating Temperature	Standard: 50°F ~ 95°F (10°C ~ 35°C) at 10% to 80% RH with 84.2°F maximum dew point. Refer to manual for operating temperature derating. Extended: 40°F ~ 104°F (5°C ~ 40°C) at 5% to 85% RH with 84.2°F dew point.
	Storage Temperature	-40°F ~ 149°F (-40°C ~ 65°C)
	Operating Humidity	10% to 80% RH with 84.2°F maximum dew point.
Certification	UL, cUL, CB, FCC, 80 Plus Platinum	

* Weight is on chassis without HDDs
 * The latest product information / specification can be found at www.hanwhasecurity.com
 * Bandwidth performance figures based on performance testing by Hanwha Techwin using Wisenet WAVE

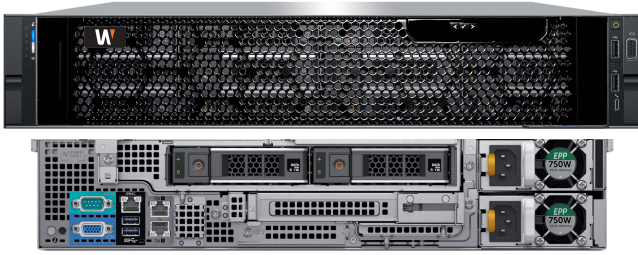
Dimensions

Unit: inch (mm)



WRR-P-S202x1 Series

Wisenet WAVE Network Video Recorder



*Pre-configured for RAID 6,
Supports RAID 0, 1, 5, 6, 10 configurations.

EFFECTIVE STORAGE CAPACITY*

MODEL	RAW STORAGE	RAID EFFECTIVE STORAGE	
		RAID5	RAID6
WRR-P-S202x1-16TB	16TB	12TB	7TB
WRR-P-S202x1-20TB	20TB	16TB	11TB
WRR-P-S202x1-24TB	24TB	20TB	14TB
WRR-P-S202x1-28TB	28TB	24TB	18TB
WRR-P-S202x1-32TB	32TB	28TB	22TB
WRR-P-S202x1-40TB	40TB	36TB	29TB
WRR-P-S202x1-48TB	48TB	44TB	37TB
WRR-P-S202x1-64TB	64TB	56TB	44TB
WRR-P-S202x1-96TB	96TB	88TB	74TB
WRR-P-S202x1-108TB	108TB	96TB	78TB
WRR-P-S202x1-120TB	120TB	108TB	89TB
WRR-P-S202x1-132TB	132TB	120TB	100TB
WRR-P-S202x1-144TB	144TB	132TB	111TB

* Actual usable space is dependent on file system format and allocation size