

VZ-D2IP-L SERIES

21.5" IP OUTPUT MONITOR

USER MANUAL



ViewZ[®]
www.viewzusa.com

Please read this manual thoroughly before use, and keep it handy for future reference.

CONTENTS

Safety Instruction	3
1. Important Safety Instruction	3
Installation	4
1. Package	4
2. Interface	5
Function	6
1. Monitor Button Function	6
2. OSD Control and Function	8
Mounting Guide	10
Specification	11
Trouble Shooting	13

SAFETY INSTRUCTION

Important Safety Instruction

1. Read all warnings.
2. Follow all instructions to ensure longevity of monitor.
3. Do not place the monitor near water.
4. Clean only with dry cloth.
5. Do not block any ventilation openings. Install in accordance with the manufacturer's instructions.
6. Do not install near any heat sources such as radiators, heat registers, stoves, or other heat generating devices.
7. Do not override the safety purpose of the polarized or grounding-type plug.
8. A polarized plug has two blades with one wider than the other.
9. A grounding type plug has two blades and a third grounding prong.
10. The wide blade or the third prong are provided for your safety.
11. If the provided plug does not fit into your outlet, consult with electrician for replacement of the outlet.
12. Protect the power cord from being walked on or pinched particularly at plugs, convenience receptacles and the point where it connects to the monitor.
13. Only use attachment/accessories specified by the manufacturer.
14. Use only with the cart, stand, tripod, bracket or table specified by the manufacturer or sold with the monitor. When a cart is used, use caution when moving the cart & monitor in combination to avoid injuries.
15. Unplug the monitor during lightning storms or when unused for long periods of time.
16. Refer all servicing to qualified service personnel. Servicing is required when the monitor has been damaged in any way.



The monitor shall not be exposed to dripping or splashing and objects containing liquids, such as vases shall be placed near the monitor.

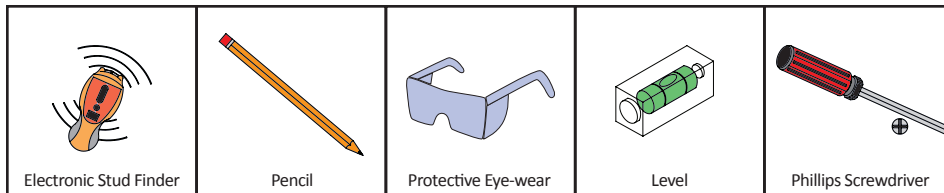
The monitor should have ample distance (e.g. 10cm) from the wall for sufficient ventilation.

The device has been tested for conformance to safety regulations and requirements, and has been certified for international use. However, like all electronic equipment, the device should be used with care. Please read and follow the safety instructions to protect yourself from possible injury and to minimize the risk of damage to the unit.

INSTALLATION

Installation Tools

The following tools may be required depending on your installation.



Assembly Components - provided

Your ViewZ monitor is shipped with all proper installation hardware and components. If there are parts missing and/or damaged, please stop the installation and contact ViewZ USA at (888)-998-4399.



LED Monitor (Qty 1) &
Base Stand (Qty 1set)



User Manual (Qty 1)



HDMI Cable (Qty 1)



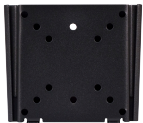
110V Power Cable (Qty 1)
DC 12V Power Supply (Qty 1)

Mounting Option

Your ViewZ monitor is compatible with ViewZ monitor mounts. For more information, please contact ViewZ USA at (888)-998-4399.

Wall & Ceiling Mount

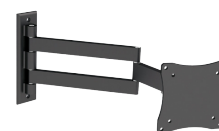
- Part # **WM05** VESA 50, 75, 100
15mm Low profile



- Part # **WM11** Tilting $-70^{\circ} \sim +70^{\circ}$
Swivel 180°

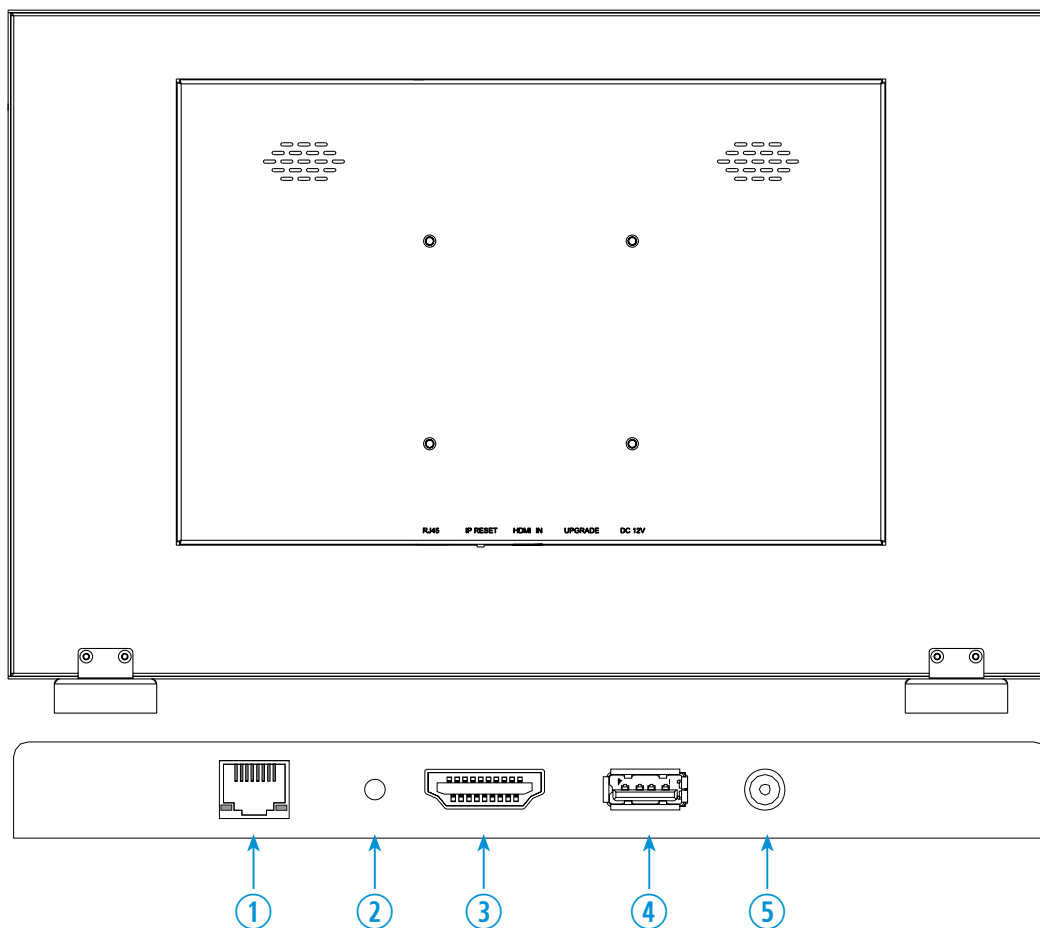


- Part # **AM01** Tilting $-70^{\circ} \sim +70^{\circ}$
Swivel 180°



CONNECT EXTERNAL EQUIPMENTS

Interface Input Ports

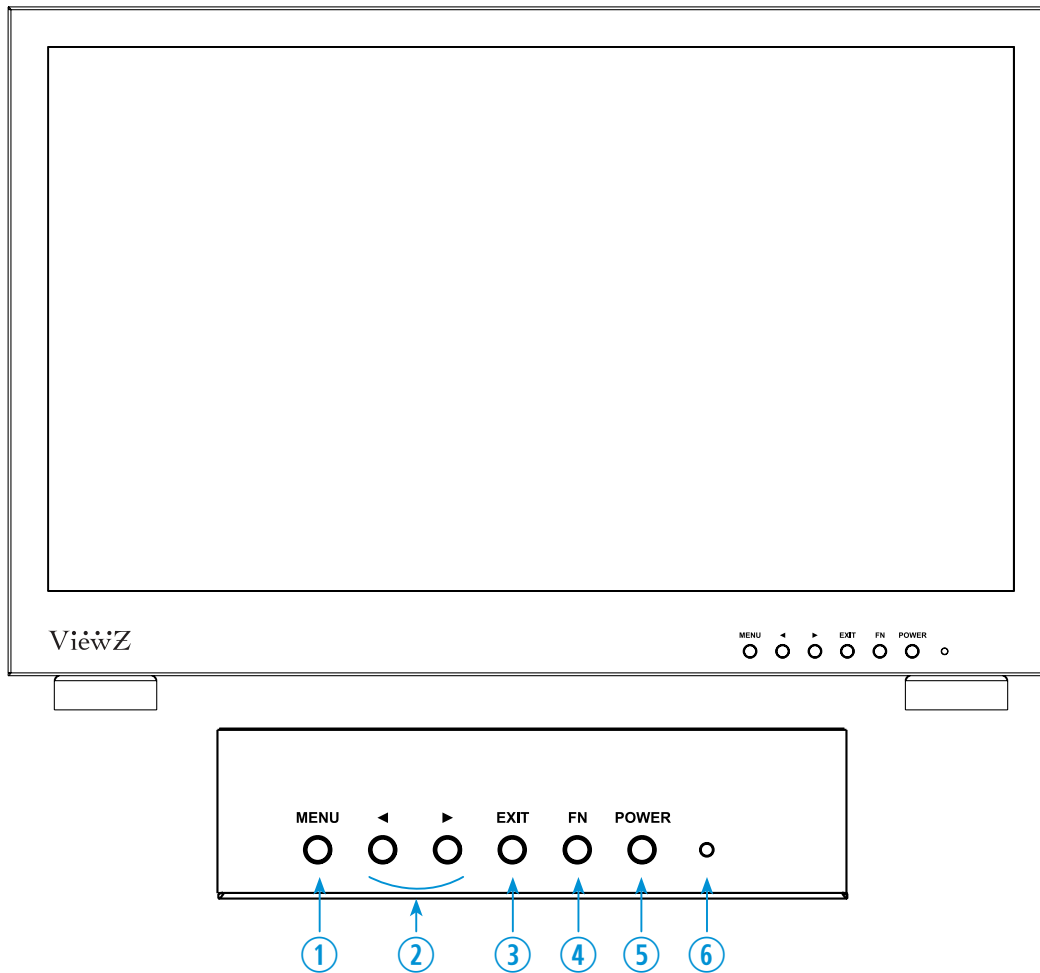


1. ETHERNET 10/100 (RJ 45)
2. IP RESET
3. HDMI IN

4. USB (Upgrade)
5. DC 12V IN

CONTROL AND FUNCTION

Monitor Button Function



- | | |
|--|--|
| <p>1. Menu
Enter the MENU, save the adjustment of sub-menu and exit the OSD</p> <p>2. Left & Right ◀ ▶
Change the value on selected menu</p> <p>3. Exit
Exit the MENU or go back previous MENU selection</p> | <p>4. FN
User definable button. Default function is 'Waveform'</p> <p>5. Power
Monitor power on / off</p> <p>6. LED Indicator
Blue color: monitor on
Red color : monitor off</p> |
|--|--|

CONTROL AND FUNCTION

Monitor Button Function

Shortcut key: FN user-definable function button

1. Select "**MEMU / SYSTEM / FN Configuration**" to custom F1 shortcut setting. Then press ◀ ▶ button to choose options.
2. Press "**MENU**" to confirm option as default, then press **EXIT** to exit.

Function of FN button can also be customized: Level Meter, Center Marker, Aspect Marker, Check Filed, Underscan, Scan, Aspect, Freeze.

Default function: Level Meter

◀ ▶ Buttons Operation

1. Press ◀ ▶ button to activate the Volume bar when not under the menu display.
2. Press again to adjust the value of option directly.
3. Press **'EXIT'** to exit if accidentally enter the menu.
4. After enter the Volume menu, press **'MENU'** to select among of volume, brightness, contrast, saturation, tint, sharpness , exit and **'MENU'**.

MENU Operation

1. When power on, press **'MENU'** on the device, The menu of function setting will display on the screen.
2. Press button to choose sub-menu
3. Then press **'MENU'** button to confirm
4. Press **'EXIT'** button to return/exit **'MENU/SUB-MENU'**.

CONTROL AND FUNCTION

Picture

FUNCTION		VALUE
Brightness	Setup the brightness	0 ~ 100
Contrast	Setup the contrast	0 ~ 100
Saturation	Setup the saturation	0 ~ 100
Tint	Setup the tint	0 ~ 100
Sharpness	Setup the sharpness	0 ~ 100
Color Temperature	Setup the color temperature	6500°K, 7500°K, 9300°K, User
Red Gain	Setup the Red contrast(gain) level	0 ~ 255
Green Gain ¹⁾	Setup the Green contrast(gain) level	0 ~ 255
Blue Gain ¹⁾	Setup the Blue contrast(gain) level	0 ~ 255
Red Offset ¹⁾	Setup the Red brightness(offset) level	0 ~ 511
Green Offset ¹⁾	Setup the Green brightness(offset) level	0 ~ 511
Blue Offset ¹⁾	Setup the Blue brightness(offset) level	0 ~ 511

1) In 'User' mode, users can define RGB Gain and Bias values for own purpose

Scan

FUNCTION		VALUE
Aspect	Setup the display ratio	Full, 1.85:1, 2.35:1, 4:3, 3:2
Display Scan	Display the scan mode	Fullscan, Overscan, Underscan

CONTROL AND FUNCTION

Audio

FUNCTION		VALUE
Volume	Adjust volume on monitor	0 ~ 100
Mute	Turn on/off the embedded audio	OFF, ON

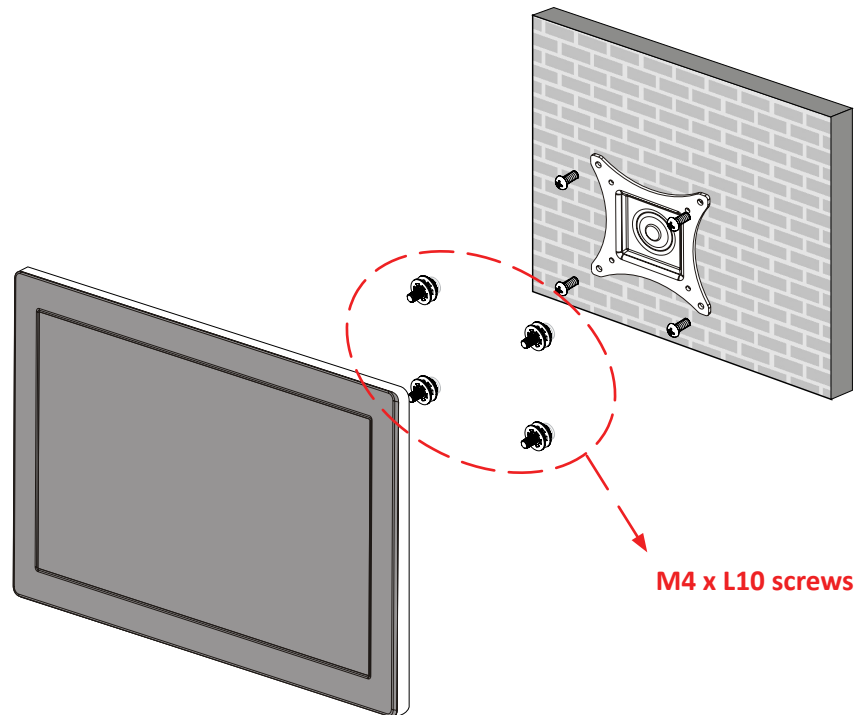
System

FUNCTION		VALUE
Language	Set the language of the OSD menu	English, Chinese
OSD Timer	Set the OSD display time	10 , 20, 30 sec
FLIP Image	Flip the display image	OFF, H/V, HV
Back Light	Set the back light level	0 ~ 100
FN Configuration	Set up shortcut functions	OFF, 1 ~ 6
Reset	Reset the monitor settings to factory default	OFF, ON

MOUNTING GUIDE

Wall Mounting (Optional)

VZ-D2IP-L monitors are suitable for VESA wall mount (not included in the delivery).



1. VZ-215D2IP-L : VESA WALL MOUNT 100mm x 100mm



Attention!

VZ-215D2IP-L : You must use 4 * M4 x L10 screws to assemble this monitor and the wall mount bracket.



WARNING !

If user uses screws longer than M4 x L10 mm for VZ-215IPM, it may cause damage to the unit. Please use bolt of correct size and length as instructed.



Mounting Safety !

At least two people are recommended to safely install the mount.

SPECIFICATION

Model No.		VZ-215D2IP-L
Display	Panel Type	21.5" LED Backlit Monitor
	Pixel Pitch	0.2482 (H) x 0.2482 (V) mm
	Brightness	250 cd/m ²
	Contrast Ratio	1000 : 1(Typ.)
	Viewing Angle	R/L : 85°/ 85° U/D : 80°/ 80°
	Color Depth	16.7 Million Colors
	Response Time	< 5 ms
	Max. Resolution	1920 (H) x 1080 (V) @60Hz
	Aspect Ratio	16 : 9
Audio	Speaker	2 x 2W
Dimension & Weight	Weight	8.48 lbs (3.8 kg)
	Dimensions (W x H x D)	20.32 x 12.99 x 1.72" (516.0 x 330.0 x 43.6 mm)
Interface	Ethernet 10/100 In	1
	HDMI In	1
	USB In (Upgrade)	1
General	Electrical Ratings	DC 12V/2.1A (AC100 ~ 240V[50/60Hz])
	Power Consumption	≤ 25 W
	Operating / Storage Temperature	32 ~ 122°F (0 ~ 50°C) / -4 ~ 140°F (-20 ~ 60°C)
	Operating Humidity	0 ~ 90% RH
	Case Type	Black Metal
	Accessories	Monitor x1, HDMI Cable x 1, Manual x1, 12V/4A Power Adapter x1

SPECIFICATION

Model No.		VZ-215LED-L1	
Input Signal Format	HDMI	720 x 576	720 x 576
		1280 x 270	23.98p/24p/25p/29.97p/30p/50p/59.94p/60p
		1920 x 1080	23.98p/24p/25p/29.97p/30p/50p/59.94p/60p/50i/59.94i/60i
		2048 x 1080	23.98p/24p/25p/29.97p/30p/50p/59.94p/60p/50i/59.94i/60i
		3840 x 2160	23.98p/24p/25p/29.97p/30p/50p/59.94p/60p/50i/59.94i/60i
		4096 x 2160	23.98p/24p/25p/29.97p/30p/50p/59.94p/60p/50i/59.94i/60i
		800 x 600	60 hz
		1024 x 768	60 hz
		1280 x 800	60 hz
		1280 x 960	60 hz
		1400 x 1050	60 hz
		1600 x 900	60 hz
		1600 x 1024	60 hz
		1600 x 1050	60 hz
		1600 x 1200	60 hz
1920 x 1200	60 hz		
2048 x 1152	60 hz		
Web Client Connection Protocol		Win 10, 8, 7, Vista, XP, Win CE, Chrome, iOS, Linux, TCP/IP	
Support Protocol		TCP/IP, UDP, RTSP, ONVIF 2.4, HTTP, DNS, RTMP, TS, DHCP	
Video compression	Video coding	H.265 & H.264	
	Audio coding	AAC, G.711U, G.711A; sampling rates : 48000kHz	
	Steaming type	(CBR & VBR), Adjustable: 64kbps-12Mbps	
	Steaming Size	Main streaming: 1920*1080, 1280*960, 1280*960, 1280*800, 1280*720 Sub streaming: 1280*720	

TROUBLESHOOTING GUIDE

- Check the following before calling for service.
- If the same problems continue after checking, contact the reseller you purchased the monitor from.

At start	We recommend that you test with different input sources when you have trouble with the current input source. If symptom persists, follow the instructions below. After following the instructions below, please contact us at 1-888-99-VIEWZ.
Only black-and-white display	Check whether the color saturation is properly setup.
Power on but no pictures	Check whether the cables of RJ45 and HDMI are correctly connected. Please use the standard power adapter coming with the product package. Improper power input may cause the device.
Wrong or abnormal colors	Check whether the cables are correctly and properly connected. Broken or loose pins of the cables may cause a bad connection.
When on the picture shows size error	Press "MENU → Function → Underscan" to zoom in/out pictures automatically when receiving HDMI signals
Other problems	Please press MENU button and choose "MENU→SYSTEM→ Reset →ON"

Note: due to constant effort to improve products and product features, specifications may change without notice.

