

The Primex SOHO Pro™ WiFi transparent Media Panels bring fiber inside and forms the center piece of the connected home. Its flexible design provides a convenient, lockable and centralized location for easy installation and distribution of multi-play and smart home services within residential and commercial premises.



**SOHO PRO™ INSTALLATION (P3000 SHOWN)**

**WARNING**

- **DO NOT** stretch enclosure walls or lid won't seat properly.
- **DO NOT** overtighten mounting screws.
- **DO NOT** use mounting screws larger than #8.

Note: Adhere to your local electrical code when installing all cabling.

\*On-wall maximum load rating:

P2100: 10kg (22lbs)

P3000: 11kg (25lbs)

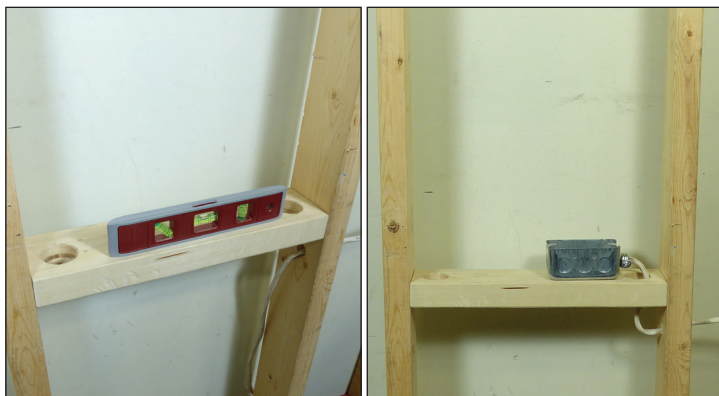
P4200: 16kg (35lbs)

**STEP 1**

**Install horizontal joist and gang box**

To ensure a comfortable working height it is recommended that the top of the gang box be installed 36" from the ground using a level.

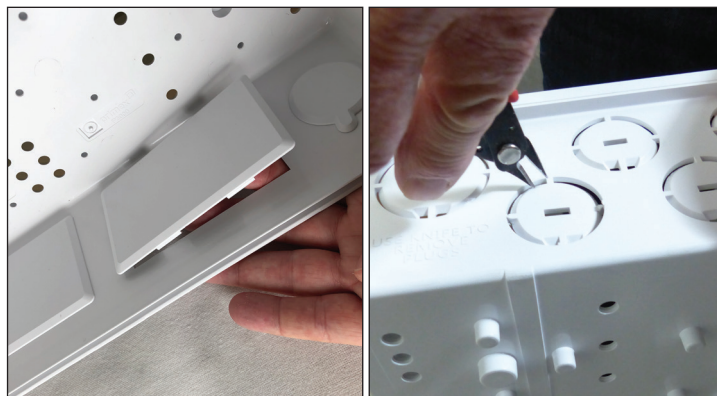
Note: Leave at least a 2" buffer zone around base to keep clear from perpendicular walls.



**STEP 2**

**Remove knock outs**

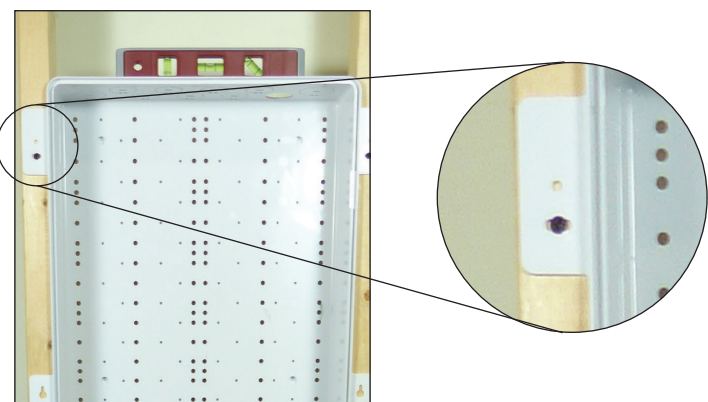
Prior to installation, remove the top knockouts as needed for conduit using a flush cutter tool. Pop out the caps and covers at the bottom of the enclosure by hand or with a screwdriver to install electrical boxes or additional conduit.



**STEP 3**

**Install base over top of the gang box using No. 8 flat head screws**

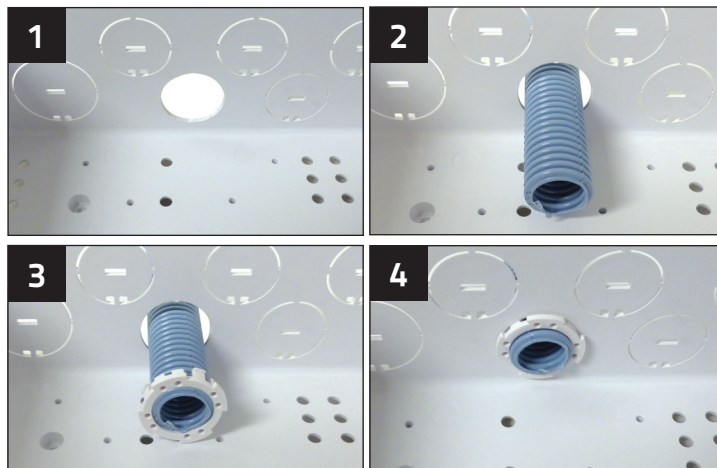
Install single screw in corner flange, level, then secure with additional screws.



**STEP 4**

**Install conduit and adapter**

At this stage, connect conduit for outgoing and incoming services and secure with Primex conduit adapters.



FOR MORE INFORMATION CONTACT:

📞 1.604.881.7875 📠 1.604.881.7835

www.primex.com     



**STEP 5**

**Measure installation position**

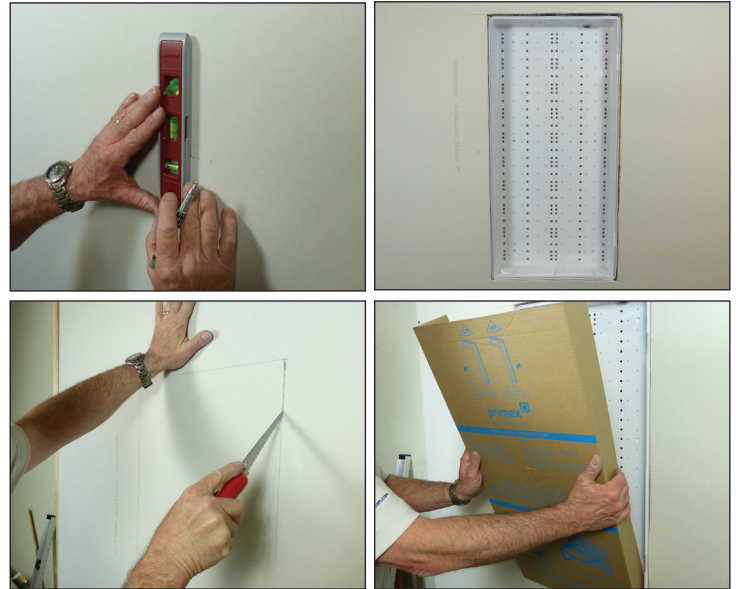
Measure distances from edges of enclosure to outside of adjacent studs, floor and ceiling.



**STEP 6**

**Measure, mark, cut and mount drywall**

Use measurements from step 5 to mark out drywall. Cut out marked area of drywall. Fit drywall over top of the installed enclosure base and secure.



**STEP 7**

**Paint drywall and affix enclosure lid**

Place paintshield, paint drywall, and install lid and frame.

Media Panel options:

- **Standard** with wide lip to cover drywall cut imperfections
- **Standard deep** (frame extender) retrofit to add 1" more depth
- **Narrow deep** for shared stud, tight corners and 1" additional depth



**STEP 8**

**Finish installation**

Remove paintshield and install accessories for equipment mounting.



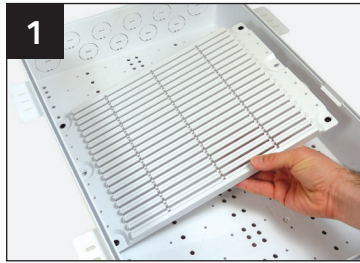
FOR MORE INFORMATION CONTACT:

📞 1.604.881.7875 📠 1.604.881.7835

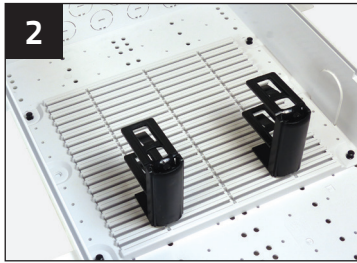
www.primex.com     

**Rail Mounting System (RMS)**

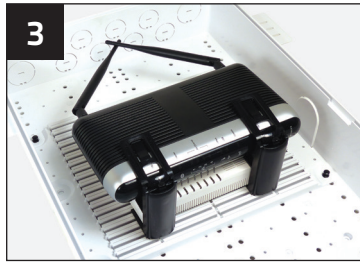
\*Max mounted component thickness of 3.3"



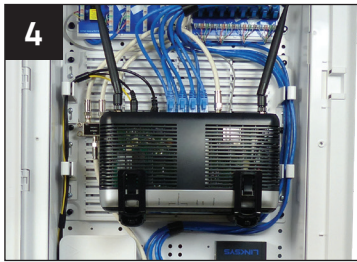
1 Determine placement of RMP and press pushpins to lock in place.



2 Slide brackets into place from the side of the mounting plate.



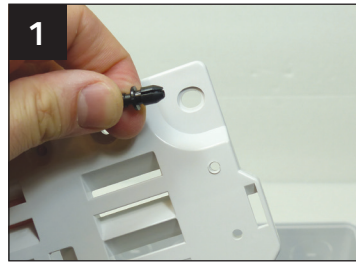
3 Place component and press bracket arm to hold securely.



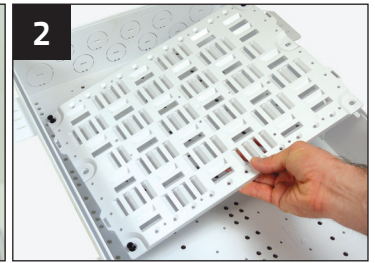
4 Recommended load 5lbs (2.27kg) Place in heavier equipment first.

**Universal Mounting System (UMS)**

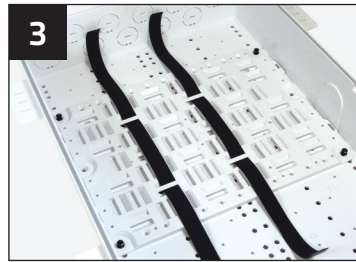
\*Recommended load 5lbs (2.27kg)



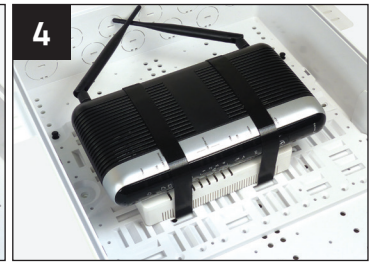
1 Pre-insert up to six pushpins into UMS before placement.



2 Determine placement of UMS and depress pushpins to lock in place.

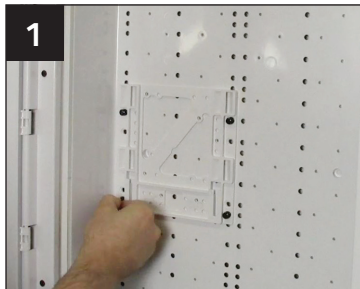


3 Determine placement location of component, cut tape, and thread.



4 Pull tape and affix to hold and ensure component is secure.

**Shelf Mounting System (SMS)**



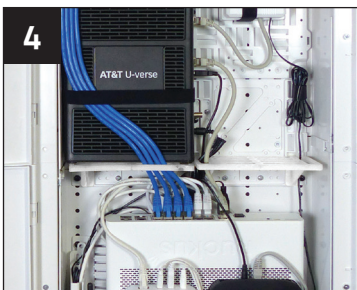
1 Insert push pins to affix SMS to the Media Panel.



2 Mount shelf into place and secure.



3 Optional mounting tape to secure hardware. (not included)



4 Can be installed side by side and act as a service divider.

**SOHO Pro™ Hex Lock**

(P/N: 125-1678)



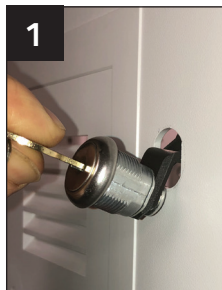
1 Insert hex lock with cam facing upwards.



2 Press in.

**SOHO Pro™ Key Lock**

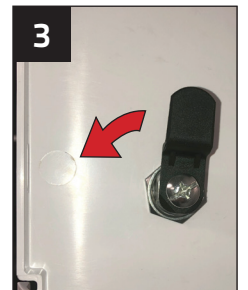
(P/N: 125-1073)



1 Install cylinder lock.



2 Thread on mounting nut.



3 Install lock cam.

\*Installation Videos can be found at [www.primex.com](http://www.primex.com).

FOR MORE INFORMATION CONTACT:

☎ 1.604.881.7875 📠 1.604.881.7835

[www.primex.com](http://www.primex.com)



# PRIMEX Accessories

# SOHOpro™ Media Panel

P2100, P3000, P4200, P6300

Product	Description	Part #
	Key Lock (1pc)	125-1073
	Hex Lock (1pc)	125-1678
	Rail Mounting System (RMS) 7" RMP w/RMB2(x2), pushpins (x10) 7" RMP w/RMB(x2), pushpins (x10) 10" RMP w/RMB2(x4), pushpins (x10) 10" RMP w/RMB(x4), pushpins (x10)	125-1655 125-1656 125-1658 125-1659
	Universal Mounting System (UMS) Universal Mounting Plate (UMP) 10" UMP w/5' tape, pushpins (x10)	125-0770 125-1623
	Shelf Mounting System (SMS) SMS Shelf (single), 2' mounting tape, 10x pushpins SMS Shelf (single), 10x pushpins SMS 'Service Divider' Kit (dual), 10x pushpins SMS Shelf (bulk/18), 5' mounting tape, 10x pushpins	125-1729 125-1541 125-1542 125-1522
	33' Roll Of Mounting Tape 10' Roll Of Mounting Tape	125-0779 125-1274
	Mounting Plate Pushpins (100/bag) Mounting Plate Pushpins (10/bag)	125-0829 125-1535
	8-Port Cat5e Data Module 8-Port Cat6 Data Module 8-Port Voice RJ31x Module 6-Port Cat6a Data Module 8-Port Voice Cat6 w/RJ45 Module 1x8 Port 4 Line w/RJ45 Voice Module	125-0986 125-1035 125-0987 125-0975 125-0977 125-0976
	8-Port Cat6 Tool-less Gateway Termination Module	135-0061
	Cat5e Data/Voice Tool-less Module Cat6 Data/Voice Tool-less Module	135-0080 135-0063
	Cat6/Coax Combo Module Cat6A/Coax Combo Module Triple Play Combo Module (Cat6/Voice/Data) 1X8 RJ45 w/1X8 Splitter Combo Module	125-1665 125-1666 125-1667 125-1750
	2-Way Coax Splitter (horizontal) 4-Way Coax Splitter (vert/horiz) 6-Way Coax Splitter (vert/horiz) 8-Way Coax Splitter (vert/horiz)	125-1661 125-1574 125-1575 125-1576
	Electrical Installation Kit 360° Electrical Rotating Outlet	125-1355 125-1547
	Tool-less Cat6 Jack, 180° Tool-less Cat6A Jack, 180°, Unshielded Tool-less Cat6A Jack, 180°, Shielded	135-0351 125-1628-WT 125-1629-WT

Product	Description	Part #
	Cat5e, 110 IDC, 90° HD Cat5e, 110 IDC, 180° HD Cat6, 110 IDC, 90° HD Cat6, 110 IDC, 180° HD	125-0949-WT 125-0948-WT 125-0947-WT 125-0946-WT
	3-Line RJ12 Voice Jack	125-0959-WT
	SC/APC Fiber Keystone w/Shutter	125-0908
	Cat5e coupler, HD Cat6 coupler, HD RG12 coupler, HD	125-1266-WT 125-1267-WT 125-1268-WT
	F-Connector Keystone	125-0961
	Blank keystone	125-0960-WT
	SpeedStar™ Jacks Cat5e Jack w/8 bezels Cat5e Jack, CorroShield™, w/8 bezels Cat6 Jack w/8 bezels Cat6A 10 Gig Jack, w/8 bezels	135-0214 135-0019 135-0188 135-0213
	Customer Premise Outlet (CPO4), 4-Port	125-0911
	Single-Gang Wall Plate, 1-Port Single-Gang Wall Plate, 2-Port Single-Gang Wall Plate, 3-Port Single-Gang Wall Plate, 4-Port	125-0957-WT 125-0958-WT 125-0955-WT 125-0956-WT
	Decorative Wall Jack, 1-Port Decorative Wall Jack, 2-Port Decorative Wall Jack, 3-Port Decorative Wall Jack, 4-Port Decorative Wall Plate	125-0951-WT 125-0952-WT 125-0953-WT 125-0954-WT 125-0950-WT
	Oversize Wall Plate, 1-Port, Glossy Oversize Wall Plate, 2-Port, Glossy Oversize Wall Plate, 3-Port, Glossy Oversize Wall Plate, 4-Port, Glossy Oversize Wall Plate, 6-Port, Glossy	125-1241-WT 125-1236-WT 125-1242-WT 125-1243-WT 125-1244-WT
	Oversize Wall Plate, 2-Port, W/Cat6 & Coax, Glossy Oversize Wall Plate, 2-Port, W/Cat6 & Coax, Textured	125-1288-WT 125-1237-WT
	Fiber Transition Case (FTC2) FTC2 - Standard FTC2 - w/ SC/APC fiber adapter FTC2 - w/angled shutter SC/APC adapter	125-1778 125-1828 125-1827
	Fiber Transition Outlet (FTO) FTO-w/1 SC/APC Adapter FTO-w/Integrated Splice Tray	125-0889 125-0879
	Hurricane Clip (12/pk)	125-0239
	3/4"-1/2" Reducer 1"-3/4" Reducer	125-1022 125-0936

FOR MORE INFORMATION CONTACT:

📞 1.604.881.7875 📠 1.604.881.7835

www.primex.com

