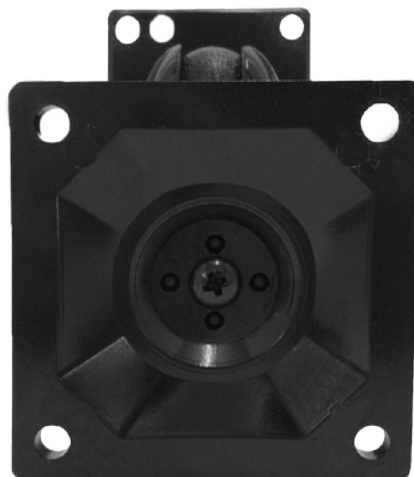
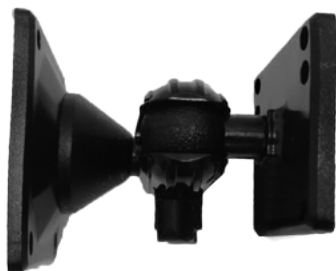


WDVESA-LA19L

LCD Wall Mount Kit



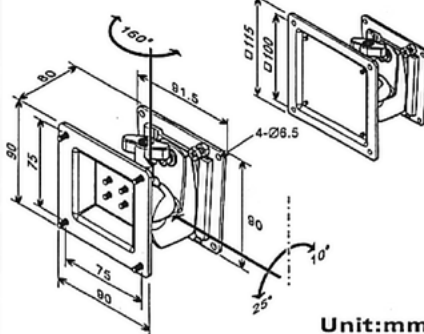
Wall Mount Kit

Check-list

1  X9

2  X1

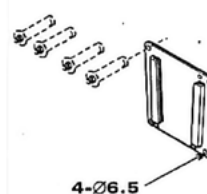
Arm operation



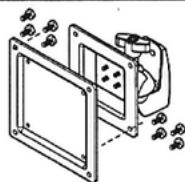
Unit:mm

Assembly guide

Secure wall mount plate firmly to the solid RC wall with four expansion screws (not supplied).

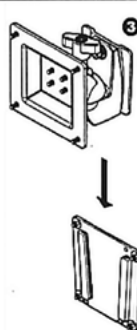


4-Ø6.5

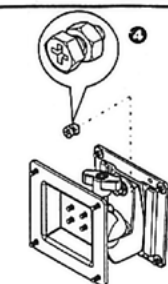


Check your LCD monitor to verify which VESA standard interface it supports before assembling

- 75mm x 75mm VESA Standard Interface: Secure the mounting bracket arm to the rear of the LCD panel with 4 screws.
- 100mm x 100mm VESA Standard Interface: Secure the 100mm x 100mm plate to the mounting arm with screws. Then secure the arm to the rear of the LCD panel with 4 screws.



Insert the arm (with LCD monitor on already) into the wall mount plate and press it down.



Secure the nut to the screw about 3-5 rotations (as shown in figure) in the clockwise direction to lock it into wall mount plate. Then secure the nut counterclockwise to the wall mount plate. (to avoid the arm falling off)



When the joint loosens, tighten the parallel knob in the clockwise direction. (Loading weight: 1~6kg)

Note:
* Support the monitor during the adjustment

LA-19L