

Tensioned Large Cosmopolitan Electro

For larger venue installs, the Tensioned Large Cosmopolitan® Electro® is a ceiling or wall mounted electric screen. A variety of finishes and veneer options are available.

Features

- In-the-roller motor mounting system
- Tensioning Cable System to prevent warping and ensure even lateral tension
- Decora-style, three-position wall switch
- Standard black backing retains projected brightness on front projection surfaces
- Seamless surfaces
- Two-piece aluminum case with mounting brackets for wall or ceiling mount installation
- Available with built-in low voltage control, or Video Projector Interface (screen trigger) or silent motor
- Standard white powder-coated aluminum finish; available in black or veneer upon request
- Smooth Roll Technology to keep your screen perfectly flat
- Slim-Tab, a lower profile, stronger tab design to keep your screen perfectly taut

Optional Accessories:

- Single Motor Low Voltage Control System
- Radio Frequency Wireless Remote Single Motor LVC
- Infrared Wireless Remote Single Motor LVC
- SCB-100
- Video Projector Interface
- Key Operated, 110 Volt Switch
- Locking Switch Cover Plate
- Dual Motor Low Voltage Control System
- Radio Frequency Wireless Remote - Dual Motor LVC
- Infrared Wireless Remote Dual Motor LVC
- Red Laser Pointers
- Green Laser Pointers
- RF PowerPoint Remote with Green Laser Pointer



16:9 HDTV Format

Viewing Area (H x W)		Nominal Diagonal		Overall Case Length	
in.	cm	in.	cm	in.	cm
92" x 164"	234 x 417	188"	478	186"	472
108" x 192"	274 x 488	220"	559	215½"	547

16:10 Wide Format

Viewing Area (H x W)		Nominal Diagonal		Overall Case Length	
in.	cm	in.	cm	in.	cm
100" x 160"	254 x 406	189"	480	182½"	464
110" x 176"	279 x 447	208"	528	199¾"	507
120" x 192"	305 x 488	226"	574	217"	551

4:3 Video Format

Viewing Area (H x W)		Nominal Diagonal		Overall Case Length	
in.	cm	in.	cm	in.	cm
108" x 144"	274 x 366	180"	457	167½"	425
120" x 160"	305 x 406	200"	508	185"	470
126" x 168"	320 x 427	210"	533	194"	493
132" x 176"	335 x 447	220"	559	203"	516
144" x 192"	366 x 488	240"	610	220½"	560

Available with the Following Screen Surfaces



HD Progressive 0.9
Half Angle: 85° Gain: 0.9



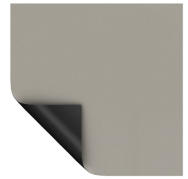
HD Progressive 1.1
Half Angle: 85° Gain: 1.1



HD Progressive 1.3
Half Angle: 75° Gain: 1.3



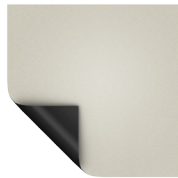
Da-Mat
Half Angle: 60° Gain: 1.0



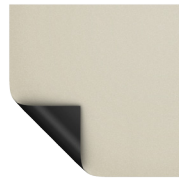
High Contrast Da-Mat
Half Angle: 45° Gain: 0.8



Cinema Vision
Half Angle: 45° Gain: 1.3



High Contrast Cinema Vision
Half Angle: 50° Gain: 1.1



Pearlescent
Half Angle: 40° Gain: 1.5



Dual Vision
Half Angle: 65° Gain: 0.9



Da-Tex
Half Angle: 30° Gain: 1.3

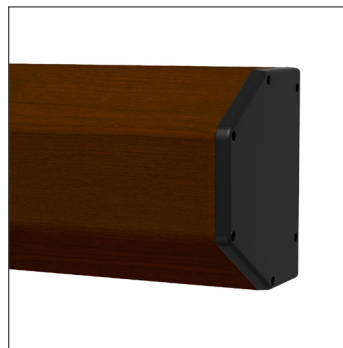
Product images



White Case (Standard)

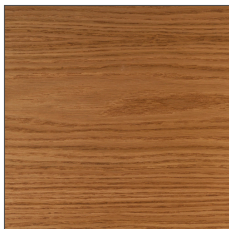


Black Case

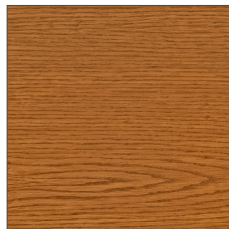


Veneer Case

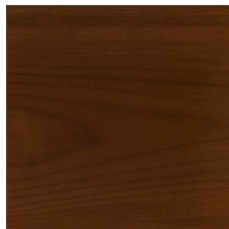
Veneer Finishes



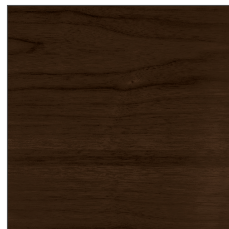
Light Oak Veneer



Medium Oak Veneer



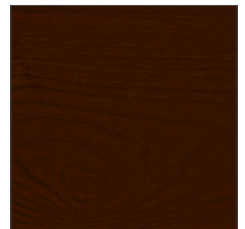
Natural Walnut Veneer



Heritage Walnut Veneer



Cherry Veneer



Mahogany Veneer



A BRAND OF MILESTONE AV TECHNOLOGIES | www.milestone.com

P 800.622.3737 / 574.267.8101 F 877.325.4832 / 574.267.7804

E info@da-lite.com

In British Columbia, Milestone AV Technologies ULC carries on business as MAVT Milestone AV Technologies ULC.

©2017 Milestone AV Technologies. DL-0443 (Rev. 3) 0717.

Da-Lite is a registered trademarks of Milestone AV Technologies. All other brand names or marks are used for identification purposes and are trademarks of their respective owners. All patents are protected under existing designations. Other patents pending.