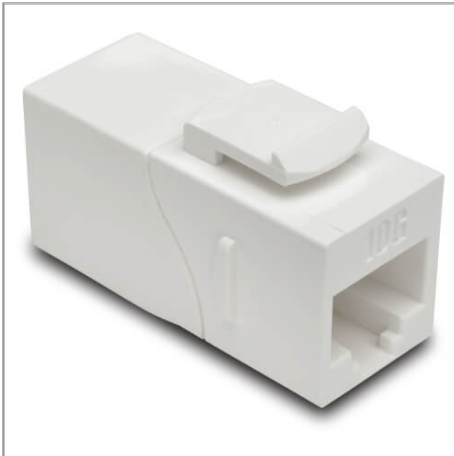


## Cat6a Straight-Through Modular In-Line Snap-In Coupler with 90-Degree Down-Angled Port, White (RJ45 F/F)

MODEL NUMBER: **N235-001-WH-6AD**



White coupler with 90° angled port connects 2 Cat6a cables to provide feed-through patching with standard data wallplates. Ideal for premise wiring, telecommunications, data networking and Ethernet connections.

### Description

Strengthen your high-speed network with Tripp Lite's N235-001-WH-6AD Cat6a Straight-Through Modular In-Line Snap-In Coupler (F/F). This white coupler connects two Cat6a patch cords to create one longer cable. Its keystone design is perfect for convenient feed-through patching when used with a standard data wallplate (such as Tripp Lite's N042-001-WH). One RJ45 port is angled down at a 90-degree angle for easy installation in hard-to-reach spaces. Built for ultra-fast performance, this is an ideal coupler when setting up premise wiring, telecommunications, data networking and Ethernet connections.

Compatible with all Cat6a cables, the N235-001-WH-6AD's durable scratch-resistant polycarbonate housing is colored white to blend into any color scheme. This coupler features straight-through wiring and 50-µinch gold-plated contacts designed to resist corrosion. The N235-001-WH-6AD is UL-listed and meets all requirements for EIA/TIA Category 6A compliance. It's also backward compatible with Cat6, Cat5e and Cat5 LANs.

### Features

#### Strengthens Your High-Speed Network

- Ideal for premise wiring, telecommunications, data networking and Ethernet connections
- Connects 2 Cat6a patch cables for a longer cable run
- Keystone design for easy snap-in installation in standard data wallplates (such as Tripp Lite's N042-001-WH)
- Compatible with all Cat6a cables

### Highlights

- 90° down-angled RJ45 port for easy installation in tight spaces
- 50-µinch gold-plated contacts on RJ45 jacks
- Keystone design for use with standard data wallplate
- Compatible with all Cat6a cables
- Backward compatible with Cat6, Cat5e and Cat5 LANs

### Package Includes

- N235-001-WH-6AD Cat6a Straight-Through Modular In-Line Snap-In Coupler, White (RJ45 F/F)



- Backward compatible with Cat6, Cat5e and Cat5 LANs

#### Superior Construction for Superior Performance

- 90° down-angled RJ45 port for easy installation in hard-to-reach spaces
- 50-µinch gold-plated contacts resist corrosion and improve conduction
- Features straight-through wiring
- Durable scratch-resistant polycarbonate housing
- White coloring blends into any color scheme
- UL-listed
- Meets all EIA/TIA Category 6A requirements

#### TAA-Compliant

- Compliant with the Federal Trade Agreements Act (TAA) for GSA Schedule purchases

## Specifications

OVERVIEW	
UPC Code	037332197184
Technology	Cat5/5e; Cat6; Cat6a
PHYSICAL	
Color	White
Cable Length (ft.)	0
Cable Length (m)	0
Shipping Dimensions (hwd / cm)	12.70 x 10.16 x 1.27
Shipping Dimensions (hwd / in.)	5.00 x 4.00 x 0.50
Shipping Weight (kg)	0.01
Shipping Weight (lbs.)	0.02
ENVIRONMENTAL	
Operating Temperature Range	14 TO 140 F (-10 TO 60 C)
Storage Temperature Range	-40 TO 154.4 F (-40 TO 68 C)
Relative Humidity	10 TO 90% RH, NON-CONDENSING
CONNECTIONS	
Side A - Connector 1	RJ45 (FEMALE)
Side B - Connector 1	RJ45 (FEMALE)



**Tripp Lite**  
1111 W. 35th Street  
Chicago, IL 60609 USA  
Telephone: 773.869.1234  
[www.tripplite.com](http://www.tripplite.com)

WARRANTY	
Product Warranty Period (Worldwide)	Lifetime limited warranty

© 2021 Tripp Lite. All rights reserved. All product and company names are trademarks or registered trademarks of their respective holders. Use of them does not imply any affiliation with or endorsement by them. Tripp Lite has a policy of continuous improvement. Specifications are subject to change without notice. Tripp Lite uses primary and third-party agencies to test its products for compliance with standards. See a list of Tripp Lite's testing agencies: <https://www.tripplite.com/products/product-certification-agencies>