

Product Specifications



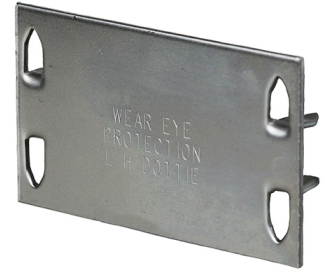
1-1/2" x 2-3/4" 16 Gauge Safety Plate (500 pc Pail)

Part number 41P

Category number 5050

UPC 781002141167

Steel Safety Plates are affixed to wooden studs to prevent nails, drills, or fasteners from penetrating hidden utility pipes, wire and cable.



Physical Characteristics

Type	Safety Plate
Size	1-1/2" x 2-3/4"
Length (in)	2-3/4"
Width (in)	1-1/2"
Gauge	16
Material	Carbon Steel
Finish	Plain

Packaging Details

Standard Qty	500
Price Per	100
Package Length	11.7
Package Width	11.6
Package Height	10.9
Net Weight	0.0674
Package Weight	33.7
Package Type	Pail

Performance Data

Applications

Affixed to Wooden Studs To Protect Wires and Utility Pipes

Special Features

Nail Sharp Points, Packed in Jobsite Pail, Easy to Install

Certifications

RoHS Compliant	Yes
----------------	-----