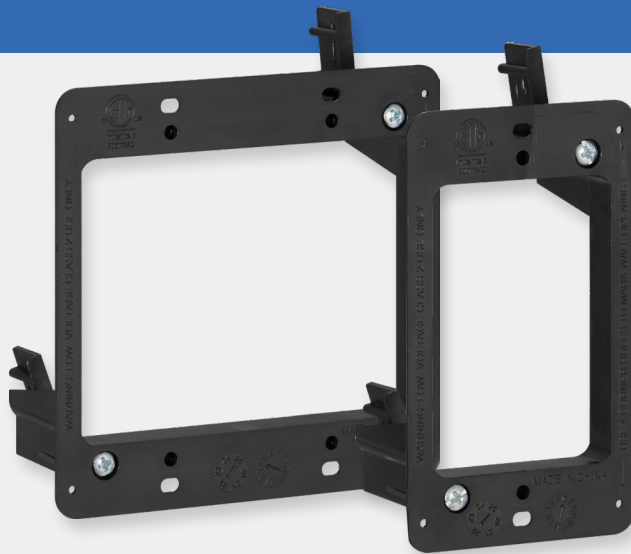


NEW PRODUCT INTRODUCTION

EXCLUSIVE TO ADI

ADI PRO launches low voltage mounting brackets



Applications

ADI PRO's non-metallic low voltage mounting brackets provide a versatile, flush mount solution for Class 2 communications, data and cable installations. Both single gang and double gang models can be mounted vertically or horizontally and adjusted for a wall thickness of 1/4" to 1". The brackets are ETL-certified and available in convenient multi-packs.

Features

- Compatible with all standard single gang or double gang low voltage inserts and wall plates
- Mount vertically or horizontally and adjust for wall thickness (1/4" to 1")
- Clean flush mount application
- Brackets function as a template for their own cutout
- ETL Certified

Now Available

Part Number	Description
0E-SNGMBLVA	Single gang low voltage mounting bracket, Lexan® black polycarbonate, 2.5" W x 4.3" H x 1.6" D, 10-pack
0E-DBLGMBLVB	Double gang low voltage mounting bracket, Lexan® black polycarbonate, 4.3" W x 4.3" H x 1.6" D, 5-pack