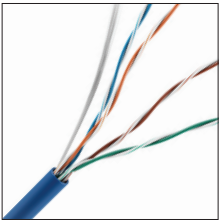


# CAT 5E PLENUM CABLE

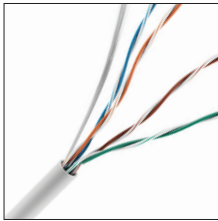
## 24/4 CMR/FT6 EXPRESS BOX



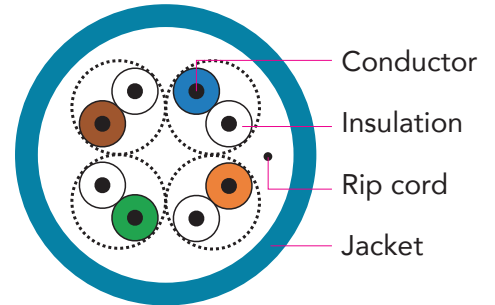
### SPEC SHEET



0E-CAT5PBL



0E-CAT5PWH



### Physical Characteristics

**Conductor:** 24 AWG Solid Bare Annealed Copper

**Insulation:** FeP (Fluorinated Ethylene Propylene)

**Conductor Color Code:**

- Pair 1: Blue - White/Blue
- Pair 2: Orange - White/Orange
- Pair 3: Green - White/Green
- Pair 4: Brown - White/Brown

**Rip Cord:** Applied longitudinally under jacket

**Jacket:** Plenum PVC (Low-Smoke, Flame-Retardant and RoHS compliant)

**Jacket Legend:**

- 0000FT CAT 5E 4 PR 24 AWG E507576 (UL) CMP c(UL)us FT6 75C (RoHS)
- UL VERIFIED TO TIA-568.2-D CAT 5E ##### RM# A B C D E F 1 2 3 4 5 6 7 8 9

**Nominal Cable Diameter (in.):** 0.200

**Nominal Cable Net Weight (lbs./1000ft.):** 21.60

**Minimum Bend Radius (in.):** 1.0

**Maximum Pulling Force (lbs.):** 25

**Temperature Rating (°F):**

- Installation: +32 to +140
- Storage & Operation: -4 to +167

**Operating Voltage:** 300V

### Applications

IEEE 802.3: 1000BASE-T (Gigabit Ethernet), 100 BASE-TX, 10 BASE-T, 155Mp/s, 622Mp/s ATM, ANSI x 3.263: 100Mb/s, 4/16Mb/s Token Ring, Broadband and Baseband Analog Video



For more information contact your ADI Sales person or visit [adiglobal.com/adiexclusivebrands](http://adiglobal.com/adiexclusivebrands)

# CAT5E PLENUM CABLE

## 24/4 CMR/FT6 EXPRESS BOX



### Standard Compliance

- ANSI/TIA-568.2-D
- ANSI/TIA-862 (Building Automation)
- IEC 1180 Ed.2.0 (Class D)
- ICEA S-90-661 (Category 5e)
- NEC/CEC Type CMP (NFPA 262) for Plenum
- UL 444
- RoHS Compliant Directive 2011/65/EU

### Certifications



### Certifications for Management System

ISO 9001: 2008, ISO 14001: 2004, OHSAS 18001

### Electrical Characteristics

Max. Capacitance (nF/100m @ 1 kHz)	Max. DC Resistance (Ω/100m @ 68°F)	Dielectric Strength (DC-kV, 2s)	Characteristic Impedance (Ω 1~100 MHz)
5.6	9.38	2.5	100 ± 15

Frequency MHz	Insertion Loss Max. db/100m	NEXT Min. db/100m	PSNEXT Min. db/100m	ACRF Min. db/100m	PSACRF Min. db/100m	Return Loss Min. db/100m	PD Max. ns/100m	PD Skew Max. ns/100m
1	2.0	65.3	62.3	63.3	60.8	20.0	570	45
4	4.1	56.3	53.3	51.8	48.8	23.0	552	45
10	6.5	50.3	47.3	43.8	40.8	25.0	545	45
16	8.2	47.2	44.2	39.7	36.7	25.0	543	45
20	9.3	45.8	42.8	37.8	34.8	25.0	542	45
31.25	11.7	42.9	39.9	33.9	30.9	23.6	540	45
62.5	17.0	38.4	35.4	27.9	24.9	21.5	539	45
100	22.0	35.3	32.3	23.8	20.8	20.1	538	45
200	32.4	30.8	27.8	17.8	14.8	18.0	537	45
350	44.9	27.1	24.1	12.9	9.9	16.3	536	45

\* Spec meets ANSI/TIA/EIA 568.2-D standard. Sweep Tested to 350 Mhz. All values are dB/100m (328 ft.) and values above 100 MHz are for informational purposes only.



For more information contact  
your ADI Sales person or visit  
[adiglobal.com/adiexclusivebrands](http://adiglobal.com/adiexclusivebrands)