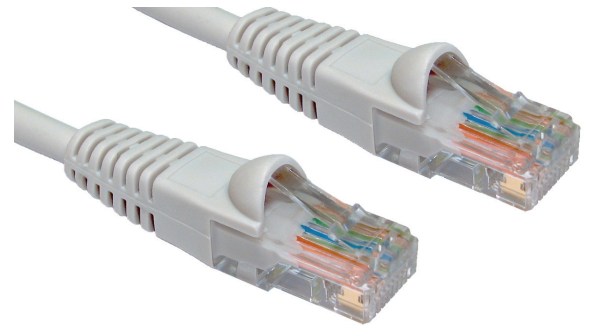


CAT 5E PATCH CABLES



These high-quality network cables are used for hubs, switches, routers, DSL/cable modems, patch panels and other high performance networking applications. The molded, snagless boot prevents unwanted cable snags during installation with extra strain-relief.



FEATURES

Molded, Snagless Boots

100% Copper

24AWG

8P/8C 50 Micron Gold Plated Connectors

PVC Cable Jacket

568B Wiring Color Code

Designed for Residential and Commercial Installations

Limited Lifetime Warranty

Product Specifications

SINGLE PACKS

PART #	LENGTH:
0E-C5EGY1	1'
0E-C5EGY3	3'
0E-C5EGY5	5'
0E-C5EGY7	7'
0E-C5EGY10	10'
0E-C5EGY14	14'
0E-C5EGY25	25'
0E-C5EGY50	50'

COLOR: Gray

6-PACKS

PART #	LENGTH:
0E-C5EGY16	1'
0E-C5EGY36	3'
0E-C5EGY56	5'
0E-C5EGY76	7'

COLOR: Gray

**For more information contact
your ADI Sales person or visit
adiglobal.com/adiexclusivebrands**

