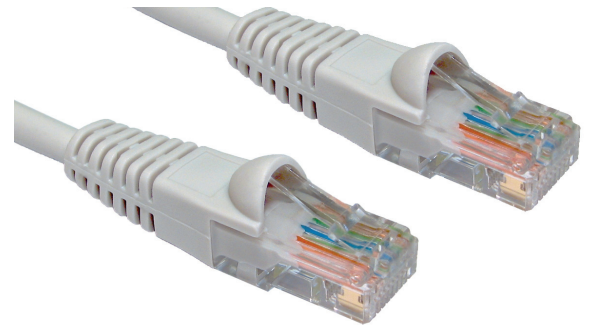


# CAT 5E PATCH CABLES



These high-quality network cables are used for hubs, switches, routers, DSL/cable modems, patch panels and other high performance networking applications. The molded, snagless boot prevents unwanted cable snags during installation with extra strain-relief.



## FEATURES

**Molded, Snagless Boots**

**100% Copper**

**24AWG**

**8P/8C 50 Micron Gold Plated Connectors**

**PVC Cable Jacket**

**568B Wiring Color Code**

**Designed for Residential and Commercial Installations**

**Limited Lifetime Warranty**

## Product Specifications

### SINGLE PACKS

PART #	LENGTH:
0E-C5EGY1	1'
0E-C5EGY3	3'
0E-C5EGY5	5'
0E-C5EGY7	7'
0E-C5EGY10	10'
0E-C5EGY14	14'
0E-C5EGY25	25'
0E-C5EGY50	50'

**COLOR:** Gray

### 6-PACKS

PART #	LENGTH:
0E-C5EGY16	1'
0E-C5EGY36	3'
0E-C5EGY56	5'
0E-C5EGY76	7'

**COLOR:** Gray

**For more information contact  
your ADI Sales person or visit  
[adiglobal.com/adiexclusivebrands](http://adiglobal.com/adiexclusivebrands)**

