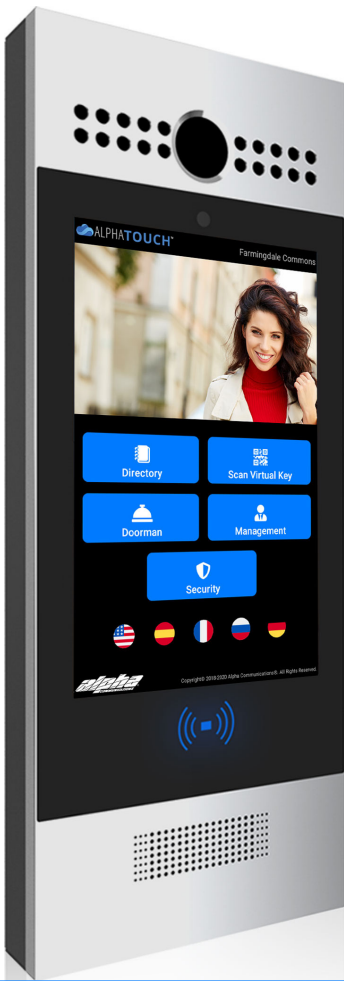


ALPHATOUGH™

AT700AS QUICK START GUIDE



NOTE: SINCE ALPHATOUGH™ IS AN EVER-CHANGING PLATFORM, PRINTED DOCUMENTATION, SUCH AS THIS MANUAL, MAY NOT BE 100% UP-TO-DATE. FOR THE MOST UP-TO-DATE DOCUMENTATION, PLEASE VISIT:

<https://www.alphatouch.info/help>

alpha COMMUNICATIONS®

42 Central Drive Farmingdale, NY 11735-1202
 Phone: 631-777-5500 | Fax: 631-777-5599
<http://www.alphacommunications.com>



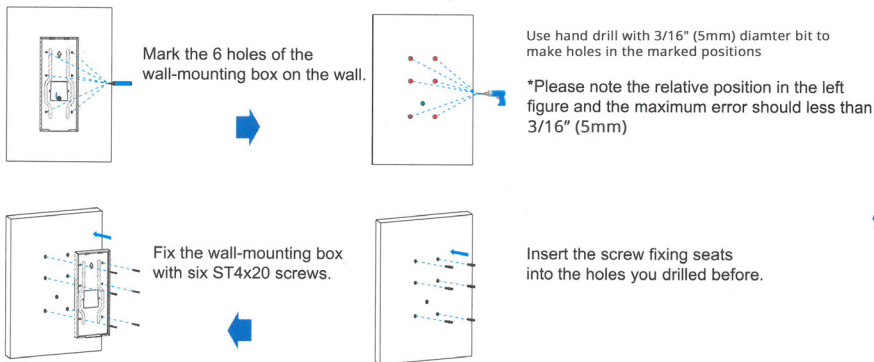
PLEASE SEND US PHOTOS OF YOUR INSTALLATION.
 IT COULD BE FEATURED ON OUR SOCIAL MEDIA!
SEND PHOTOS TO: INFO@ALPHATOUGH.INFO

Copyright© 2018-2020
 Alpha Communications® All Rights Reserved
AWD273 – Rev October 2020

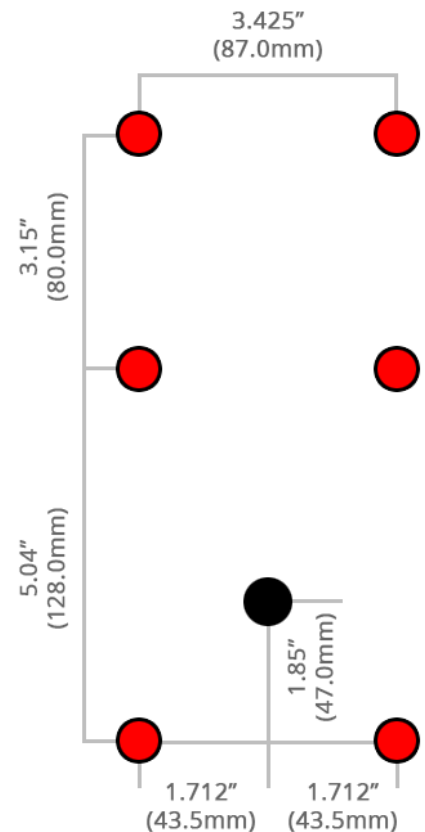
Included Hardware

- ⊕ ST4x20 screw x 6
- ⊙ Screw fixing seat x 6
- ⊙ M3x6 screw x 3
- ⊕ M3x5 screw x 4
- 🪄 Rope x 1
- 📁 Rubber Plug x 3
- ⊕ ST1.7X4 x 2
- 🔧 Allen Wrench X 1
- 📱 AT700AS x 1
- 📱 Back cover x 1
- 🔒 Locking Cable Plate x 1
- 📱 Silicon rubber sealing ring x 1

Installation

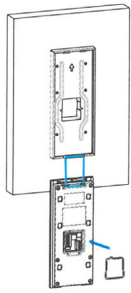


Bolt Pattern

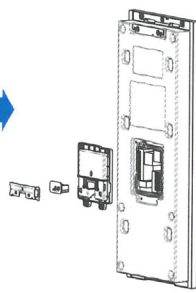


CONTINUED ON REVERSE

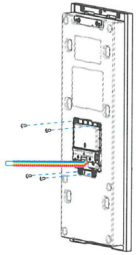
Installation Continued



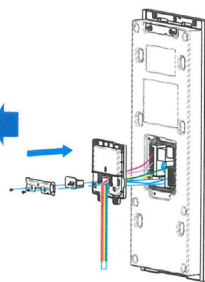
For convenient wiring, hang AT700AS on the wall-mounting box/flush-mounting bracket with string, then insert the silicon rubber sealing ring into the groove.



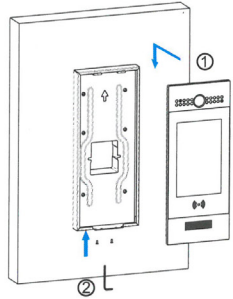
Take down the back cover ,locking plate and rubber plug.



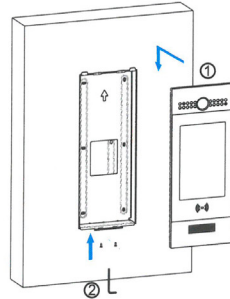
Use four M3x5 screws to fix the back cover.



Make cables go through the back cover, connecting to the corresponding interfaces of the main board. Choose a suitable size rubber plug to compress cables , then fasten the locking plate with two ST1.7x4 screws.



Wall Mounting

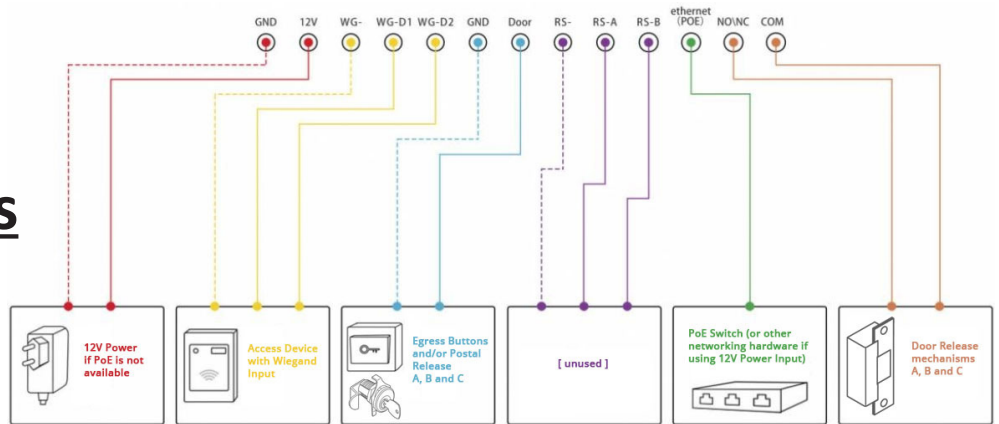


Flush Mounting

1.Place the device into the wall-mounting box / flush-mounting bracket until the edges of which align to the wall. Then pull the device downward and ensure the groove of it hooks to the lock catches of the back box.

2.Use the Allen wrench to tighten the device with two M3x6 screws.

Wiring Terminals



Door Release Examples

