

## T1RAG3F8 Trove / AMAG M4000 Kit Access & Power Integration Solution

### Description

Altronix T1RAG3F8 Trove™ Rack kit is pre-assembled and consists of Trove1AG1R enclosure/backplane with the following factory installed Altronix components:

- One (1) eFlow6NB - power supply/charger set at 24VDC;
- One (1) VR6 - Voltage Regulator;
- One (1) ACMS8 - Fused Dual Input/Output Access Power Controller;

This kit also accommodates various combinations of AMAG Symmetry M4000 boards for up to eight (8) doors in a single enclosure.



T1RAG3F8



### Key Features

- |   |   |
|---|---|
| <ul style="list-style-type: none"> <li>- Output Power:             <ul style="list-style-type: none"> <li>- Eight (8) 24VDC fused lock power outputs rated at 6A total max.</li> <li>- Fire Alarm Disconnect is individually selectable by output.</li> </ul> </li> <li>- Accommodates the following AMAG Symmetry M4000 boards: M4000-DEC4, M4000-IOC20/16.</li> <li>- Power status LED on front panel.</li> <li>- Simplified board layout and wire management.</li> <li>- Convenient knockout configuration:             <ul style="list-style-type: none"> <li>- Six (6) 1.25" diameter knockouts located on the back of enclosure.</li> </ul> </li> </ul> | <ul style="list-style-type: none"> <li>- 6' IEC320 3-wire power cord.</li> <li>- 2U drawer on extendable rails.</li> <li>- Black powder coated steel enclosure.</li> <li>- Included Z Bracket facilitates ease of wiring.</li> <li>- Includes cam lock, tamper switch and mounting hardware.</li> <li>- CE European Conformity.</li> <li>- Lifetime Warranty* / Made in the U.S.A.</li> </ul> |
|---|---|

*\*Altronix Power Supply/Charger and Sub-Assemblies only*

### Optional Accessories

- RE2:  
Rack Mount Battery Enclosure accommodates up to four (4) 12VDC/7AH batteries.
- WM5, WM25, WM100:  
Magnetic Cable Tie Mounts (5, 25, 100 counts).



**T1RAG3F8**  
**Trove / AMAG M4000 Kit**  
**Access & Power Integration Solution**

**Specifications**

**Power Supply (eFlow6NB):**

**Input**

Voltage 120VAC, 60Hz, 3.5A max.  
 Main Fuse 5A / 250V.

**Outputs**

Voltage Factory set at 24VDC.  
 Current 6A continuous.  
 Auxiliary Class 2 power-limited @ 1A (unswitched).  
 Other Overvoltage protection.  
 Filtered and regulated.

**Battery Backup**

Type Sealed lead acid or gel type.  
 Fuse Rating 10A @ 32VDC.  
 Failover Upon AC loss, instantaneous.

**Fire Alarm Disconnect**

Supervised Latching or non-latching.  
 EOL 10K Resistor.

**Supervision**

AC Failure Form "C" contacts.  
 Battery Form "C" contacts.  
 Low DC Power Shutdown  
 Shuts down DC output terminals if battery voltage drops below 70-75% for 24V units. Prevents deep battery discharge.

**Indicators (LED)**

Input 120VAC is present.  
 DC Output Powered.  
 Battery Discharged or not connected.

**Voltage Regulator (VR6):**

**Input**

Voltage 24VDC from eFlow6NB.

**Output**

Voltage 12VDC.  
 Current 6A continuous.  
 Other Surge suppression.

**Indicators (LED)**

Input 24VDC is present.  
 Output Powered.

**Dual Input Access Power Controller (ACMS8):**

**Input**

Voltage 24VDC from eFlow6NB and 12VDC from VR6.  
 Input Fuse 15A/32V.

**Outputs**

Voltage 12 or 24VDC individually selectable.  
 Eight (8) selectable 12VDC - 24VDC independently controlled outputs or eight (8) indepently controlled Form "C" relay outputs:  
 a) Fail-Safe and/or Fail-Secure power outputs.  
 b) Form "C" Relays. 28VAC or VDC @ 2.5A Rated.  
 c) Auxiliary power outputs (unswitched).  
 d) Any combination of the above.

Any of the eight (8) fuse protected power outputs are selectable to follow power Input 1 or Input 2.

Individual outputs may be set to OFF position for servicing.

Output Fuses 3A/32VDC.

**Indicators (LED)**

Red LEDs Outputs are triggered (relays energized).  
 Blue LED FACP disconnect is triggered.

**Individual voltage LEDs:**

Green: 12VDC  
 Red: 24VDC.

**T1RAG3F8 Kit:**

**Agency Listings**

CE European Conformity.

**Physical and Environmental:**

**Dimensions (H x W x D):**

Modular 2U standard EIA 19" rack mount chassis.  
 3.25" x 19.0" x 26.5" (82.6mm x 482.6mm x 673.1mm).

**Weights:**

Product 20 lbs. (9.07 kg).  
 Shipping 25 lbs. (11.34 kg).

**Temperature**

Operating 0°C to 49°C (32°F to 120°F).  
 Storage -20°C to 70°C (-4°F to 158°F).

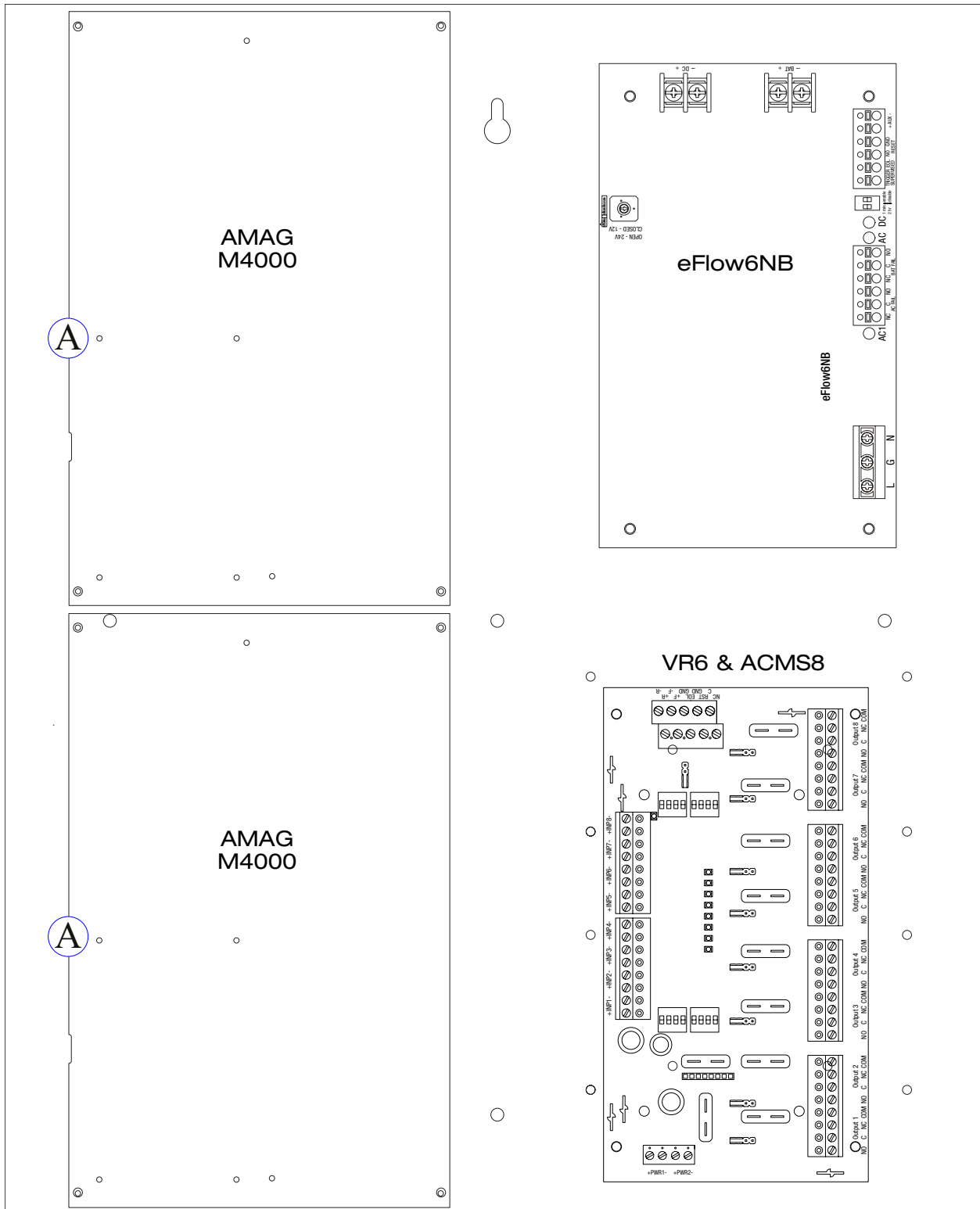
Relative Humidity 85% +/-5%.

BTU/Hr.: 115 BTU/Hr.

## T1RAG3F8 Trove / AMAG M4000 Kit Access & Power Integration Solution

### Access Controller Position Chart for the Following Models:

AMAG 4000	Pem Mounting
M4000-DEC4, M4000-IOC20/16	(A)



## T1RAG3F8 Trove / AMAG M4000 Kit Access & Power Integration Solution

