

R248UL Series

UL Listed

8-Output Rack Mount CCTV Power Supplies

Models Include:

R248UL

- 24VAC @ 3.5A (85VA) or 28VAC @ 3A (85VA).
- Eight (8) Fuse Protected Outputs

R248ULCB

- 24VAC @ 3.5A (85VA) or 28VAC @ 3A (85VA).
- Eight (8) PTC Protected Outputs

Installation Guide



Rev. 040506



More than just power.™



Installing Company: _____ Service Rep. Name: _____

Address: _____ Phone #: _____

Overview:

Altronix R248UL Series Rack Mount CCTV Power Supplies provide 24VAC or 28VAC distributed via eight (8) fuse or PTC protected outputs for powering CCTV cameras, heaters, and other video accessories.

Eight (8) Output Rack Mount Configuration Reference Chart:

Altronix Model Number	Output Voltage (VAC)	Total Output Current (Power)	Number of Outputs	PTC Protected auto-resettable Outputs (Class 2 power-limited for Dry locations, Class 3 for Wet locations)	Fuse Protected Class 1 Outputs	Individual Output Current (max per output - not to exceed total output current)	Fuse Ratings	Primary In-line Fuse Ratings	115VAC 50/60Hz Input Current	Agency Listings
R248UL	24VAC	3.5A	8	-	✓	3.5A	3.5A	3.5A/250V	0.85A	
	28VAC	3A								
R248ULCB	24VAC	3.5A	8	✓	-	2.5A	-	3.5A/250V	0.85A	
	28VAC	3A								

Specifications:

Agency Listings:

- UL Listed for Commercial Closed-Circuit Television Equipment (UL2044). CUL Listed - CSA Standard C22.2 No.1-98, Audio, Video and Similar Equipment.
- CE European Conformity

Output:

- 24VAC or 28VAC outputs.
- Surge suppression.
- Filtered and electronically regulated output.
- Short circuit and thermal overload protection.

Visual Indicators:

- Individual power LED indicators.

Visual Indicators (cont'd):

- Illuminated power disconnect circuit breaker with manual reset.

Features:

- Unit maintains camera synchronization.
- Ease of installation saves time and eliminates costly labor.
- Removable terminal blocks with locking screw flanges.

Rack Dimensions (H x W x D):

- 2U rack mount chassis for use in standard EIA 19" rack.
3.26" x 19.125" x 8.5" (83mm x 486mm x 216mm)

Installation Instructions:

1. Mount unit in the desired rack location (Space unit at least 3" from any video monitors). Do not obstruct side air vents.
2. Set power disconnect circuit breaker to OFF position (*Fig. 1d, pg. 3*).
3. All units are factory set for 24VAC operation.
For 28VAC operation, adjust unit prior to mounting and applying power as follows:
Change the wire position so that the black wire [28V] is connected to the terminal marked [P] and the yellow wire [24V] is connected to the terminal marked [S].
Note: R248ULCB set for 28VAC operation is not Class 2 Rated, not power-limited.
4. Plug power cord into a grounded 115VAC 50/60 Hz receptacle (*Fig. 1c, pg. 3*), ground should be connected as indicated in (*Fig. 1e, pg. 3*).
5. Set power disconnect circuit breaker to RESET (ON) position (*Fig. 1d, pg. 3*).
6. Measure output voltage before connecting devices. This helps avoiding potential damage. All terminals with common suffix (P) "1P, 2P..." are the same polarity.
7. Set power disconnect circuit breaker to OFF position (*Fig. 1d, pg. 3*).
8. Connect devices to removable terminal blocks marked [1P & 1N] through [8P & 8N] for eight (8) output models (*Fig. 1a, pg. 3*). Lock down the terminal blocks by tightening the screws on the flanges after the wiring has been completed.

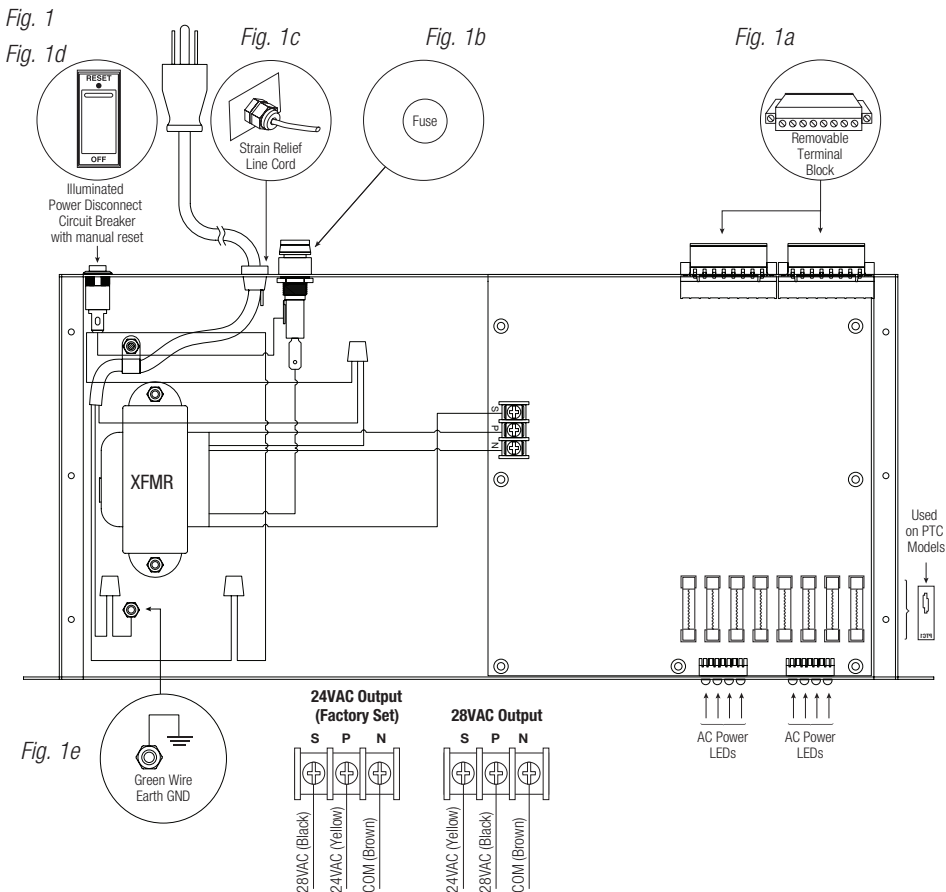
9. Upon completion of the wiring set power disconnect circuit breaker to RESET (ON) position (*Fig. 1d, pg. 3*).
10. Green power LEDs on faceplate will illuminate when power is present. When an output is in a trouble condition (blown fuse or tripped PTC), the corresponding LED will not be illuminated (*Fig. 1, pg. 3*).
 - a. Blown fuse (R248UL) - Set power disconnect circuit breaker on back of unit to the OFF position (*Fig. 1d, pg. 3*). Remove front faceplate to access fuses. Replace with fuses rated @ 3.5A/250VA (Altronix model # **Fuse1**).
 - b. Tripped PTC (R248ULCB) - To reset PTC, set power disconnect circuit breaker on back of unit to the OFF position. After approximately 30 secs. set power disconnect circuit breaker to the ON (RESET) position (*Fig. 1d, pg. 3*).
11. Illuminated power disconnect circuit breaker with manual reset:
 - OFF position - Switch not illuminated. Outputs not powered.
 - RESET (ON) position - Circuit breaker illuminated. Outputs powered.
 Circuit breaker tripped - Circuit breaker is not illuminated. Power LEDs on faceplate are not illuminated. Outputs not powered.

To reset circuit breaker set power disconnect circuit breaker to RESET (ON) position (*Fig. 1d, pg. 3*).

Note: Do not exceed units electrical load ratings as indicated in reference chart (*pg. 2*).
 Do not place mechanical load on unit. Data racks should always be properly ventilated.
 Unit is designed optimally for normal data room office installations.

CAUTION: Equipment to be installed / serviced by authorized / trained personnel only.
 Shut branch circuit power before installing / servicing equipment.

WARNING: To reduce the risk of fire or electric shock, do not expose the unit to rain or moisture.
 This installation should be made by qualified service personnel and should conform to the National Electrical Code and all local codes.





For fuse protected models:

Replace fuses with the same type and rating 3.5A/250V.



The lightning flash with arrowhead symbol within an equilateral triangle is intended to alert the user to the presence of an insulated DANGEROUS VOLTAGE within the product's enclosure that may be of sufficient magnitude to constitute an electric shock.



The exclamation point within an equilateral triangle is intended to alert the user to the presence of important operating and maintenance (servicing) instructions in the literature accompanying the appliance.



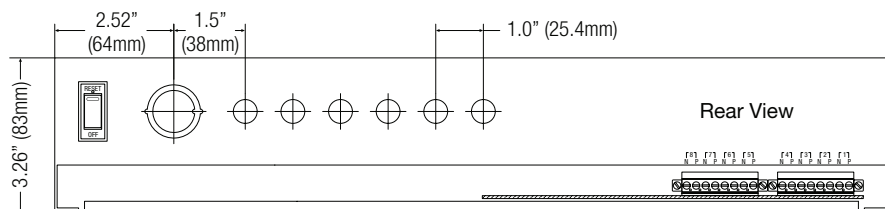
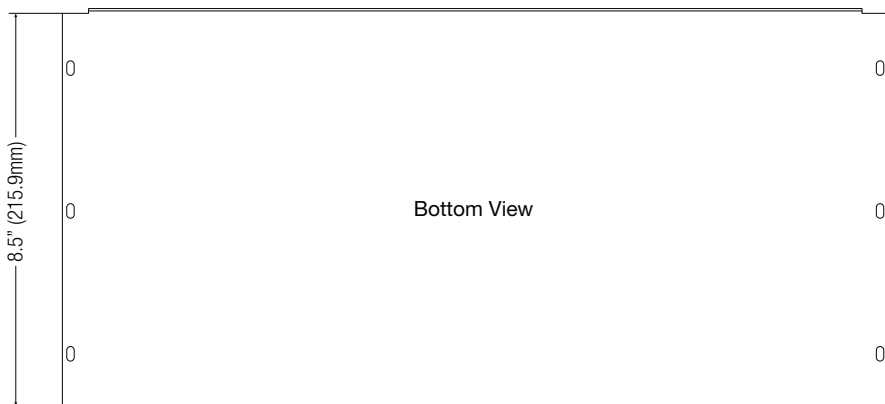
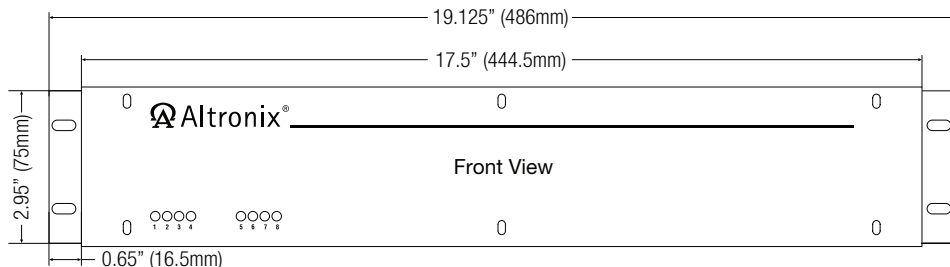
CAUTION
RISK OF ELECTRIC SHOCK
DO NOT OPEN



CAUTION: To reduce the risk of electric shock do not open enclosure. There are no user serviceable parts inside. Refer servicing to qualified service personnel.

Rack Mechanical Drawing and Dimensions:

3.26" x 19.125" x 8.5" (83mm x 486mm x 216mm)



Altronix is not responsible for any typographical errors.

140 58th Street, Brooklyn, New York 11220 USA | phone: 718-567-8181 | fax: 718-567-9056
website: www.altronix.com | e-mail: info@altronix.com | Lifetime Warranty
IIR248UL Rack Mount Series K09U

