

# M1000 / M1000-W / M-1000R-W

## Install Sheet

### Step 1

Remove the M1000 from the package via hangers provided. Hangers are factory installed to facilitate mounting of the M1000 for upward sound dispersion, Figure 1. This dispersion configuration is the most popular and most effective.

**Note:** The M1000R-W can only be mounted in the upward firing configuration.

If horizontal (side firing) dispersion is required, the hangers may be relocated as shown in Figure 2. If down firing dispersion is required, the hangers may be relocated as shown in Figure 3.

### Step 2

Install the M1000 per Figure 1, 2 or 3, using hanger wire or MCHAIN72 (not included). Uniform speaker spacing is critical, typically 12' to 15' apart.

**Note:** Code requirements in many areas require the use of #12 suspension cable for commercial applications. Check your local codes before installing the M1000.

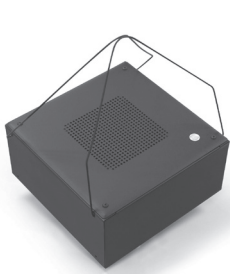
### Step 3

Terminate service loop to the amplifier output line (black is negative, red is positive) - see Figure 4.

**Note:** Strain relief is not designed to accommodate conduit. Use approved terminations through the knock-outs provided on the M1000 cover plate when conduit is used.

### Step 4

Set tap selector switch to desired power setting.



**Figure 1**

M1000 shown with hangers located as configured from factory for upward sound dispersion



**Figure 2**

M1000 shown with hangers configured for horizontal sound dispersion



**Figure 3**

M1000 shown with hangers configured for downward sound dispersion

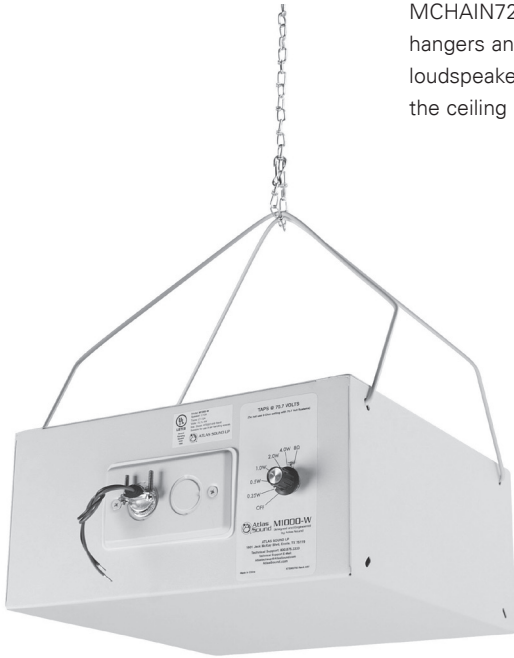


**Figure 4**

M1000 tap selector

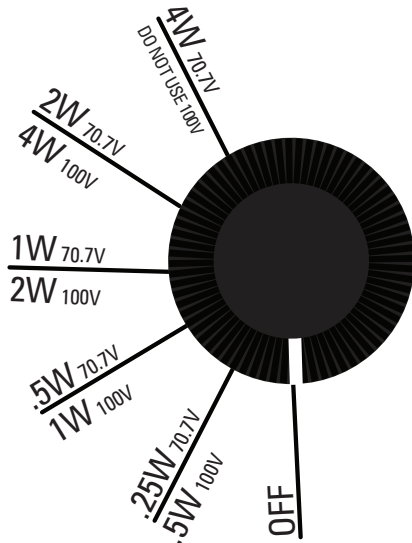
| Model    | Loudspeaker             | Magnet Weight  | Sensitivity                | Frequency Response | Transformer Taps            | Enclosure   |                     | Weight          |
|----------|-------------------------|----------------|----------------------------|--------------------|-----------------------------|---|---------------------|-----------------|
|          |                         |                |                            |                    |                             | Dimensions  | Volume              |                 |
| M1000    | 8" (203mm)<br>Dual Cone | 10oz<br>(283g) | 97dB Peak,<br>94dB Average | 100Hz - 10kHz      | .25, .5, 1, 2<br>and 4W     | 11.57" x 11.57" x 5.5"<br>(294mm x 294mm x 140mm) | 734 in <sup>3</sup> | 9lbs<br>(4.1kg) |
| M1000-W  | 8" (203mm)<br>Dual Cone | 10oz<br>(283g) | 97dB Peak,<br>94dB Average | 100Hz - 10kHz      | .25, .5, 1, 2,<br>4W and 8Ω | 11.57" x 11.57" x 5.5"<br>(294mm x 294mm x 140mm) | 734 in <sup>3</sup> | 9lbs<br>(4.1kg) |
| M1000R-W | 8" (203mm)<br>Dual Cone | 10oz<br>(283g) | 97dB Peak,<br>94dB Average | 100Hz - 10kHz      | .25, .5, 1, 2<br>and 4W     | 12.99" dia. x 3.94"<br>(330mm dia. x 100mm)       | 382 in <sup>3</sup> | 9lbs<br>(4.1kg) |

**WARNING:** To prevent injury, this apparatus must be securely attached to the floor / wall / ceiling in accordance with installation instructions.

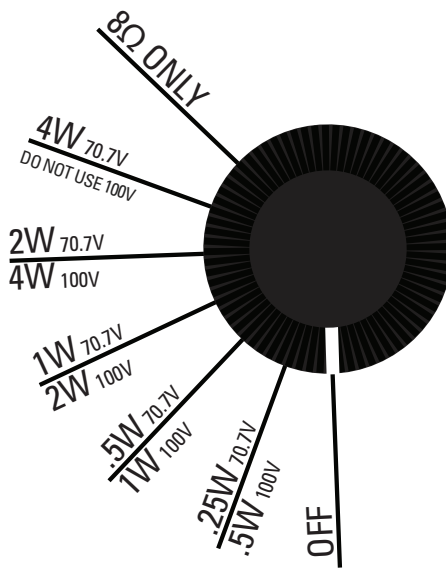


MCHAIN72 hanging chain must be looped through the M1000 hangers and then clipped to the chain again. Do not hang the loudspeaker by the hook only! Use this same "loop" technique at the ceiling mounting point, again do not hang from the hook alone!

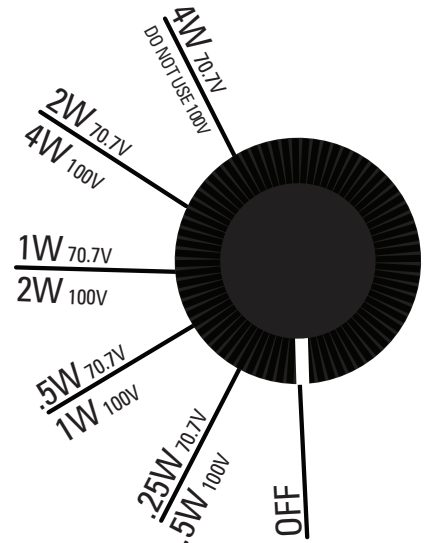
M1000 Tap Selection



M1000-W Tap Selection



M1000R-W Tap Selection



©2020 Atlas Sound L.P. The Atlas "Circle-A", Soundolier, and Atlas Sound are trademarks of Atlas Sound L.P. IED is a Registered Trademark of Innovative Electronic Designs LLC. All rights reserved. All other Trademarks are property of their respective owners. No endorsement is implied. Due to continual product development, specifications are subject to change without notice. ATSO01449 RevE 6/20