

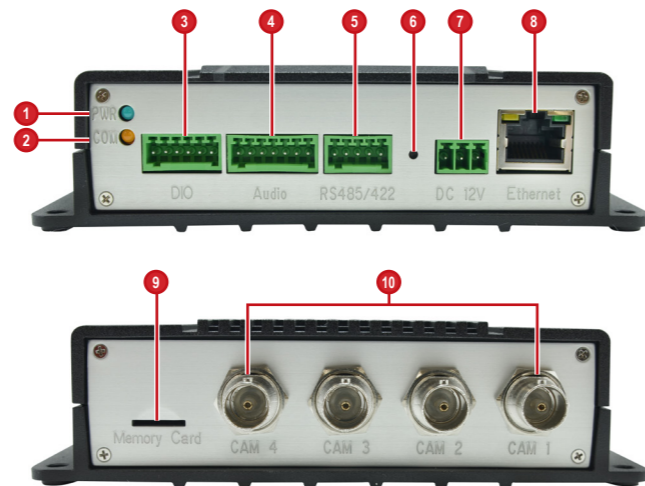
## Device Overview

V21 / V22



1	Power LED	7	Reset Button
2	Serial Port Activity LED	8	DC 12V Power Connector
3	Video In Activity LED	9	Ethernet Port
4	Digital Input / Output Connector	10	Memory Card Slot
5	Audio Input / Output Connector	11	Video Out Connector
6	Serial Port Connector	12	Video In Connector

V23 / V24



1	Power LED	6	Reset Button
2	Serial Port Activity LED	7	DC 12V Power Connector
3	Digital Input / Output Connector	8	Ethernet Port
4	Audio Input / Output Connector	9	Memory Card Slot
5	Serial Port Connector	10	Video In Connectors (1~4)

## Introduction

This guide contains all the information you need to quickly setup the Video Encoder. For detailed information on installations or operations, please refer to the Hardware Manual and Firmware Manual on ACTi website ([www.acti.com](http://www.acti.com)).

## Step 1: Unpack the Device

Check if the package comes with the following items:



Video Encoder



Mounting Screw Pack



Terminal Blocks

- Power
- Audio
- Digital Input/Output
- Serial Communication

## Step 2: Mount the Device

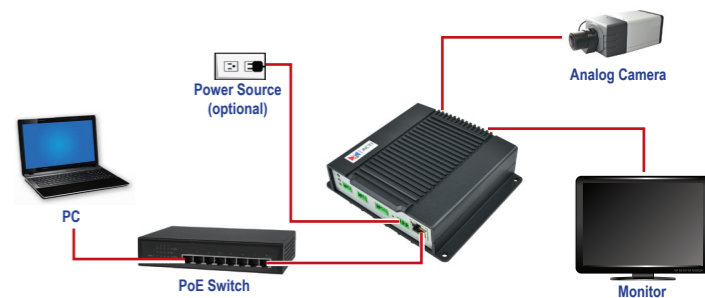
The device can be directly mounted on a surface, such as walls.

Attach the 4 supplied screws to secure the device.

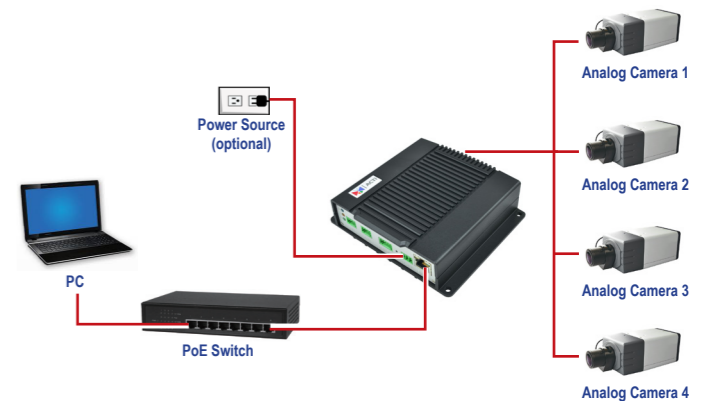


## Step 3: Connect the Device

V21 / V22 Basic Connection Example



V23 / V24 Basic Connection Example



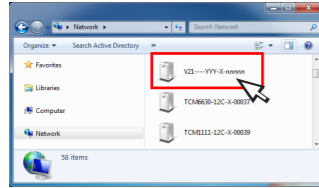
## Step 4: Access the Device

### On Network with DHCP Server / Router (Automatic IP)

1. Connect the device and the PC within the same network segment. Once connected, an IP address will be assigned to the Encoder.
2. Find the Encoder via **Windows Explorer** or **IP Utility**.

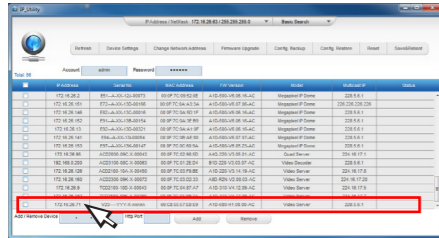
#### By Windows Explorer

- a. Go to **Start > My Computer > Network**.
- b. Double-click on the device name.



#### By IP Utility

- a. Download **IP Utility** from our website ([www.acti.com](http://www.acti.com)).
- b. Run **IP Utility** to start searching for network devices.
- c. Click the IP address of the Encoder.



3. The **Web Configurator** appears with the IP address of the Encoder on the URL bar. Login to access the Encoder.

**Note:** For full functionality, it is recommended to use Microsoft Internet Explorer®. When using non-IE browsers, free 3<sup>rd</sup> party software plug-ins may be required. Refer to the device Firmware Manual for more information.

### On Network without DHCP Server (Default IP)

1. If necessary, configure the IP settings of your PC to match with the network segment of the Encoder.

**Encoder Defaults**

IP Address: **192.168.0.100**  
Subnet: **255.255.255.0**

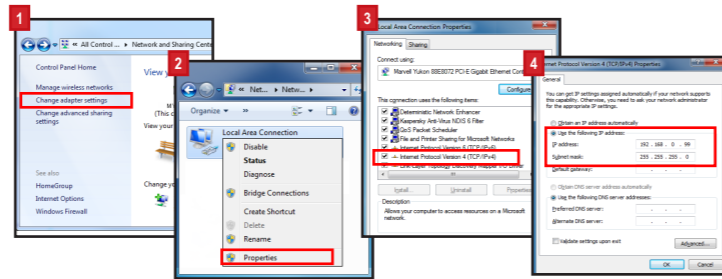
→

**PC can be assigned with**

IP Address: **192.168.0.99** or **192.168.0.101** or **192.168.0.102** and so on  
Subnet: **255.255.255.0**

#### How to configure the PC IP address?

Click **Start > Control Panel > Network and Sharing Center > Change adapter settings**. Then follow the steps below:



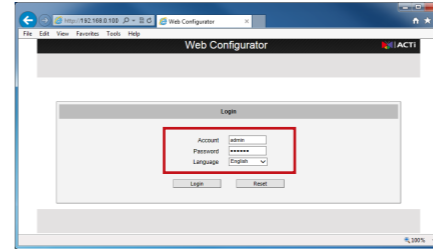
2. Open a web browser and type **192.168.0.100** on the URL address bar. The **Web Configurator** appears. Login to access the Encoder.

**Note:** For full functionality, it is recommended to use Microsoft Internet Explorer®. When using non-IE browsers, free 3<sup>rd</sup> party software plug-ins may be required. Refer to the device Firmware Manual for more information.

## Step 5: Log-in

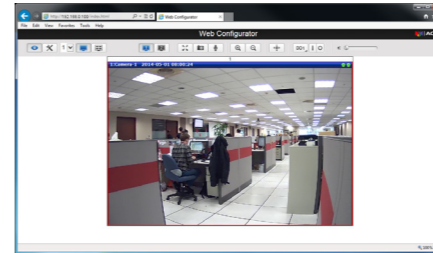
1. On the Login page, type the **Account** and **Password**.

**Default**  
Account: **admin**  
Password: **123456**



2. Select **Language**, if necessary.
3. Click **Login**.

The **Live View** screen appears.



4. Click to access the **Setup** menu to modify the Encoder settings.

**For more detailed instructions, please refer to the "Firmware Manual" downloadable from the website ([www.acti.com](http://www.acti.com)).**

ACTi Connecting Vision and its logo are registered trademarks of ACTi Corporation. Microsoft® and Windows® are registered trademarks of Microsoft Corporation. All other products or company names mentioned in this document are trademarks or registered trademarks of their respective owners.

Copyright © 2014, ACTi Corporation All Rights Reserved

## Quick Installation Guide V2x Series Encoder



V21 / V22 (1-Channel)  
V23 / V24 (4-Channel)