

NVR 3 Corporate

ACTi Network Video Recorder

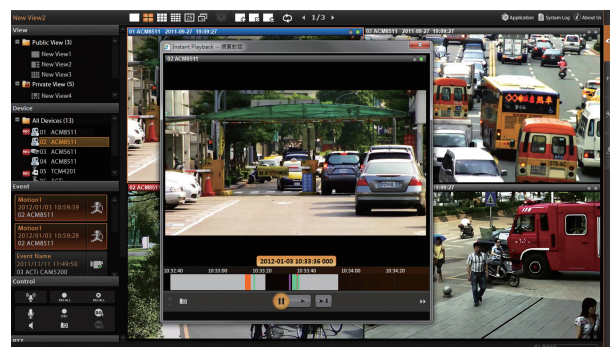
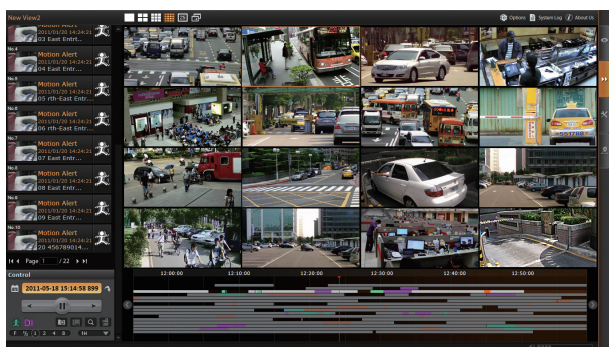


- Manage up to 100 cameras or video encoders (Expandable to unlimited cameras via CMS)
- Recording up to 100 Channels
- Live view local up to 64 Channels, remote up to 64 Channels
- Integrate with POS systems, access control and network I/O
- Synchronized playback local up to 64 Channels
- Redundancy Server mode for backup automatically
- Event trigger, response and notification
- Mobile Client, Web Client, Workstation
- Location-based management with eMap
- Non-ACTi camera support via licensed camera Device Pack

SPECIAL FEATURES

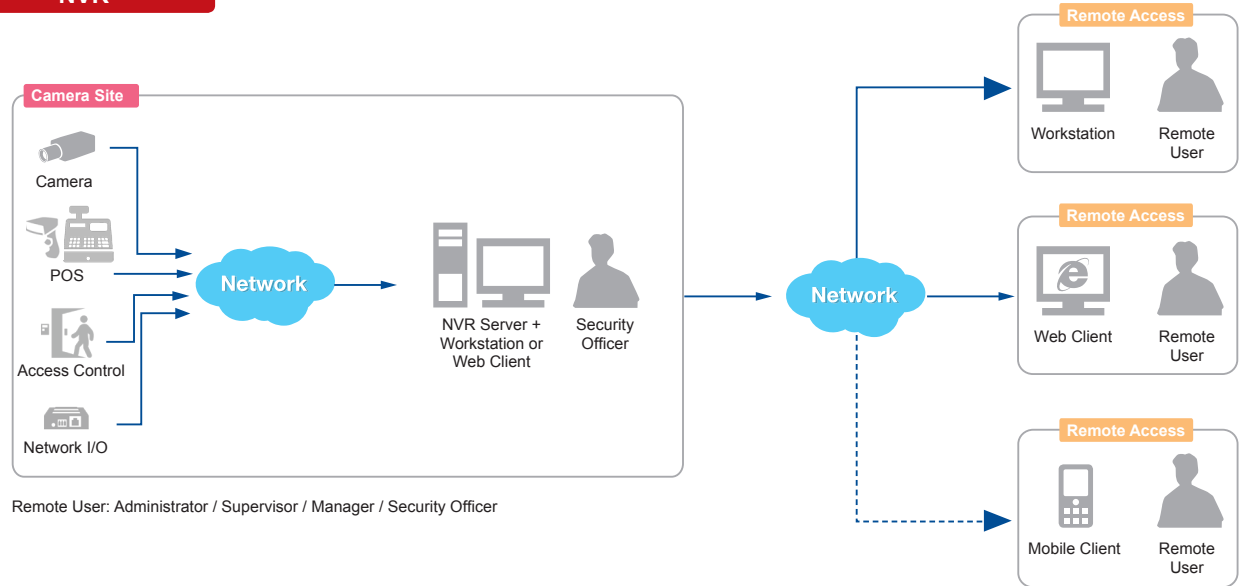
Up to 64 channels synchronized playback

Instant playback in live view window



SOLUTION ARCHITECTURE

NVR



NVR 3 Corporate

PRODUCT SPECIFICATION

NVR 3 Corporate

• General	
Full Name	ACTi Network Video Recorder 3 Corporate
Maximum Number of Clients	1 local, unlimited remote (recommended up to 5)
Maximum Number of Cameras	100 (Expandable to unlimited cameras via CMS)
Maximum Number of POS Devices	100
Maximum Number of Access Control and Network I/O Devices	100
Free License	1 channel for ACTi device, 1 channel for third-party device
Compression Mode	H.264, MPEG-4, MJPEG
	NVR 3 Server; Redundancy Server (See page 3)
• Live View	
Display Layout Mode	1, 4, 5, 6, 8, 9, 10, 12, 16, 18, 24, 25, 35, 36, 48, 49, 64
View Manager	An interface to define display layouts and the pre-set cameras within layout in the public or private view
View Patrol	Automatic switch between different views or devices
View Panel	Contains the list of pre-defined views for quick launch
Device Panel	Drag and drop video source from device panel into display layout; display camera status
Digital Zoom	Zoom in/out digitally by mouse scroll wheel or by zoom control buttons
Manual Recording / Snapshot	Instant recording upon mouse click / Instant snapshot upon mouse click or hot key
Event Panel	Display event status upon alarm or upon connection loss or recovery between server and client or when the allocated disk space is full or Point-of-sale (POS), Access control and Network I/O status
Two-way Audio	Audio sound from and to all the audio supported devices; audio broadcast to multiple devices at the same time
Dual Stream Management	Live view of stream 1 or stream 2 of dual stream devices
Instant Playback	Instant playback in live view window
• e-Map	
Layout	Area maps with camera icons, small live view windows; hyperlinked
Setup	e-Map image upload; camera positioning; vision angle and pointed direction of camera; view positioning; source positioning; extended devices for Point-of-sale (POS), Access control and Network I/O
PTZ Mode	Mouse PTZ mode to control e-Map video streams
• PTZ	
Control	Pan, tilt and zoom controls; speed control; both buttons and overlay controls
Preset Points and Tours	Create preset points; create auto tours between preset points
Number of Preset Points	32
Joystick	USB based joystick supported
Support Protocol	Auto-detect camera's PTZ protocol. Available protocols: ACTi, Pelco-P, Pelco-D, Dynacolor, Visca
• Recording	
Scheduled Recording	Record video with user defined schedule
Event Recording	Record video when the alarm event is triggered, including the pre-event buffered video clip
Speed Up	Different recording frame rate settings for non-event and triggered event
Manual Recording	Instant recording upon mouse click
Pre-Event Recording	User-defined time period to record before event occurs, and the maximum buffer is 60 seconds (default 5 seconds)
Post-Event Recording	User-defined time period to record after event occurs, and the maximum buffer is 3600 seconds (default 30 seconds)
Dual Stream Management	Recording of stream 1 or stream 2 of dual stream devices
• Search & Playback	
Recording Search	Search video recordings by time, event, channel, bookmark and listed as clickable thumbnails for full-size view and snapshot download
Playback Control	Continuous forward and backward playback with speeds 1x/2x/4x/8x or frame-by-frame; pause; stop
Synchronized Playback	64 channels
Manual Snapshot	Instant snapshot from playback upon mouse click
Digital Zoom	Zoom in/out digitally by PiP (Picture-in-Picture)
Video Export	Export video clips in AVI or RAW format; text overlay and Point-of-sale (POS) transaction data supported
• Event Management	
Event Trigger	Video motion detection; Passive IR sensor; External device through digital input; Video loss and recovery; Network loss and recovery; Server loss and recovery; Disk full; Disk not found; Disk is available; Schedule service start/stop; Bookmark; GPS positioning/reception loss; Point-of-sale (POS) status; Network I/O status; Access control allowed/denied
Event Response	Record video; Pop-up window with live video; Switch to hotspot window; Play beep sound; Activate external device through digital output; Upload snapshot to FTP server; Execute system command to activate other programs; E-mail notification with snapshots; Command a PTZ device to go to a preset point
Manual Event	Manually activate external devices through digital output via live view monitor
Event Handling	Define the schedule of event manager
• Video Analytics	
Smart Search	Smart search of recorded video by Motion Detection and Tamper
• System	
Permission Control	Unlimited number of users, Active Directory, Customizable permissions for user groups, Playback password protected, Password validity period
Language	Multi-language support
Language Import/Export	Possibility to import or export language packs for convenient local language management
Customizable User Interface	Define the layout of user interface for live view and playback
Quick Setup	Configure basic settings of NVR
GPS Position	Manual setting
• Remote Access	
PC Client Program	User interface program (Workstation) with live view, PTZ, playback, e-Map, event management, setup
PC Web Browser	Microsoft Internet Explorer with live view, PTZ, playback, e-Map, event management, setup
Mobile Client Program	Mobile device application (Active Mobile Client) supports live view, PTZ control, event or time based search and playback Supported devices: iPhone, iPad, iTouch and Android device

* All specifications are subject to change without notice.

* All brand names and registered trademarks are the property of their respective owners.

www.acti.com



NVR 3 Corporate

PRODUCT SPECIFICATION

• System Requirements*

Display Mode	Live Layout	Minimum	Recommended
Server PC with Local Client	1-16	Intel Core 2 Quad 2.4 GHz, 4GB RAM	Intel i5 2.4 GHz, 4GB RAM
	17-64	Intel i5 2.4 GHz, 4GB RAM	Intel i7-920 2.67 GHz, 4GB RAM
Server PC without Local Client	0	Intel Core 2 Quad 2.4 GHz, 4GB RAM	Intel i5 2.4 GHz, 4GB RAM
Remote Client PC	1-16	Intel Core 2 Quad 2.4 GHz, 4GB RAM	Intel i5 2.4 GHz, 4GB RAM
	17-64	Intel i5 2.4 GHz, 4GB RAM	Intel i7-920 2.67 GHz, 4GB RAM
PC Operating System	Windows 7, Windows 8, Windows Server 2008, Windows Server 2012		
PC Web Browser	Internet Explorer 10, Internet Explorer 11		

• Integration

Unified Solution	Fully compatible with ACTi cameras, encoders, central management system, TV wall and intelligent video surveillance software
Open Platform Solution	Support ONVIF compliant devices
ISV CMS Integration	Software Development Kit (SDK) available
Third-Party Integration	Point-of-sale (POS), Access control, Network I/O

Compliant Third-Party Integration Devices	Type	Brand	Devices
	Point-of-sale (POS)	pcAmerica NCR	pcAmerica Aloha Restaurant
	IP Door Control	Eterna	HID Arמוש
	Network I/O	Advantech	ADAM-6060 ADAM-6066

Licensing Part Numbers	Description	Free Channel Bundled	Maximum Number of Channels	Part Number
	ACTi video device license	1	100	LNVR3003
	Third-party video device integration license	1		LCDP1003
	POS device integration license	0	100	LPOS3000
	Access control and network I/O device integration license	0	100	LEXD3000

* These specifications are based on following camera settings:
 Single stream mode: 1280x1024, 3Mbps, 18fps, MPEG-4;
 Dual stream mode: Stream 1 - 1280x1024, 3Mbps, 18fps, H.264 / Stream 2 - 640x480, High Quality, 18fps, MJPEG
 For more details about system requirements, please refer to Project Planner on www.acti.com

Redundancy Server

• General

Maximum Number of NVRs	16
Concurrent Recording NVRs	1

• Failover Service

NVR Status Monitoring	Check NVRs' status every 5 seconds
Failover Initiation Time	Minimum 10 seconds
Data Auto Synchronization	As soon as the failed NVR is recovered, the recorded video data will be transferred to the NVR immediately

• Supported NVR Functions

Live View	
PTZ	Yes
Recording	Yes
Event Management	Yes
Search & Playback	Yes
Video Analytics	Yes
Remote Access	Yes

• Integration

Licensing Part Numbers	Description	Free Channel Bundled	Maximum Number of Channels	Part Number
	NVR 3 Server license	0	16	LRDS3000

• Solution Architecture

Redundancy Server

