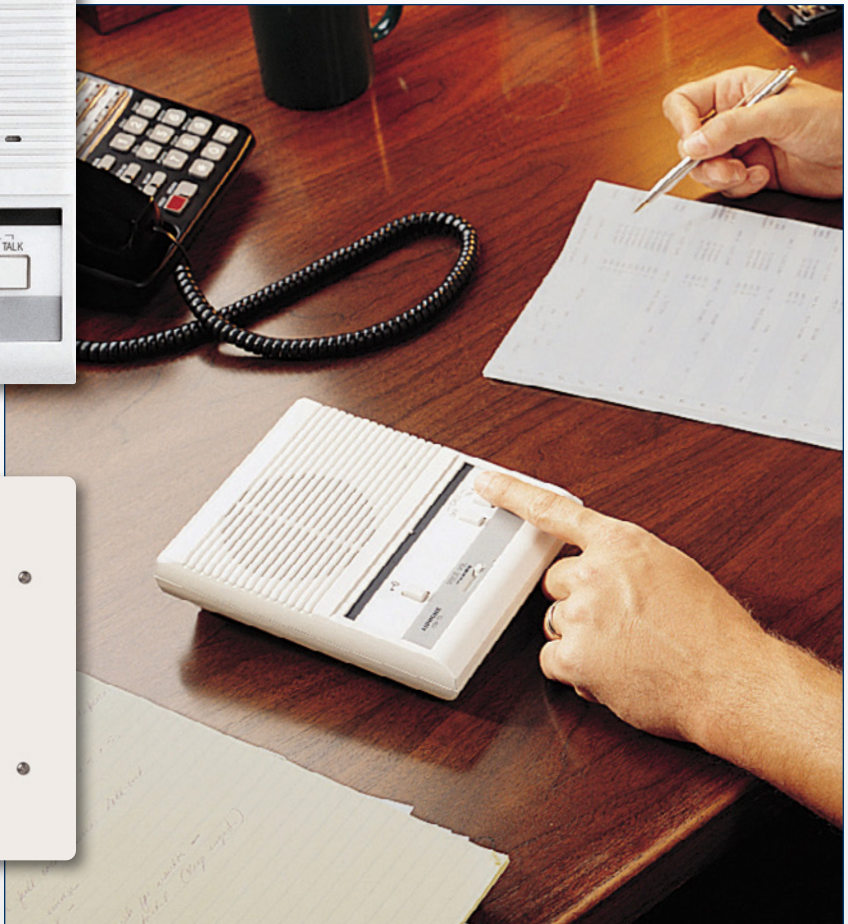
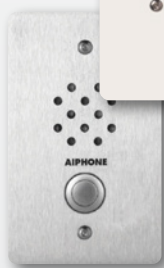




LEM-1DL Series Communication and Entry Security System



Commercial | Educational | Industrial | Residential

Components

Box Set (select if LE-D is the desired door station – up to three additional master stations can be installed for door answering)



LEM-1DLS

Box Set

(includes one LE-D door station, one LEM-1DL master station, and one PT-1210NA power supply)

Master Stations: select up to 4



LEM-1DL

Audio Master Station
(included with LEM-1DLS box set – requires one DAK-2S per every two LEM-1DL master stations in the system)

- Door release button
- Surface mount
- 7-1/16" H
- 5-5/8" W
- 2-1/8" D



LEM-1DLC

Audio Master Station

- Multi-master (max. 4)
- Occupied LED
- Door release button
- Surface mount
- 7-1/16" H
- 5-5/8" W
- 2-1/8" D

Door Stations: select 1



LE-D

Audio Door Station

- (included with LEM-1DLS box set)
- Plastic chassis
- Surface mount
- 4-3/4" H
- 3-7/16" W
- 1-1/8" D



LE-SS-1G

Audio Door Station

- Stainless steel panel
- Flush mount (fits 1-gang box)
- 4-1/2" H
- 2-3/4" W
- 2-1/2" D (back box depth)



LE-DA

Audio Door Station

- Stainless steel cover
- Flush mount (fits 2-gang box)
- 4-1/2" H
- 4-9/16" W
- 2-1/2" D (back box depth)



LE-SS/A

Audio Door Station

- Stainless steel panel
- Flush mount (fits 2-gang box)
- 4-3/4" H
- 4-3/4" W
- 2-1/2" D (back box depth)



LE-SSR

Audio Door Station

- Red mushroom call button
- Stainless steel panel
- Flush mount (fits 2-gang box)
- 4-3/4" H
- 4-3/4" W
- 2-1/2" D (back box depth)



LS-NVP/C

Audio Door Station

- Powder-coated steel panel
- Flush mount (fits 3-gang box)
- 7-1/2" H
- 5-1/2" W
- 2-1/2" D (back box depth)

NOTE: Aiphone recommends a 2-1/2" minimum back box depth for all flush mount door stations.

Power Supply
(required for system)



PT-1210NA

12V AC Transformer
(included with LEM-1DLS box set – one required per master station)

Accessories



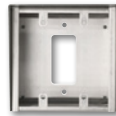
KMB-45

45° Mullion Mounting Bracket for LE-D



SBX-1G

Surface Mount Box for LE-SS-1G



SBX-2G/A

Surface Mount Box for LE-DA, LE-SS/A, or LE-SSR



SBX-NVP/A

Surface Mount Box for LS-NVP/C



EL-12S

Electric Door Strike (requires PT-1210NA)



DAK-2S

Dual Master Adaptor Kit (required per two LEM-1DL master stations – not required for LEM-1DLC master stations)



RY-AC/A

External Signaling Relay (requires shared PS-1208UL with LEM-1DL and DAK-2S or shared PS-1208UL with LEM-1DLC)

Specifications

Power Source	12–16V AC – use PT-1210NA or 12–24V DC – use PS-1208UL
Communication	Push-to-talk (simplex)
Door Release	N/O dry contact, 30V AC/DC, 1A
Wire Type	Door Station to Master Station: 2-cond., overall shield – use Aiphone #822202 or #821802 Between LEM-1DLCs: 3-cond., overall shield – use Aiphone #822203 or #821803
Distance	Door Station to farthest Master Station: 650' (22 AWG) 1,570' (18 AWG)



Aiphone Corporation
HEADQUARTERS
6670 185th Ave NE
Redmond, WA 98052

Aiphone Corp. East
REMOTE OFFICE
535 Route 38 East, #340
Cherry Hill, NJ 08002

Aiphone Corp. Canada
REMOTE OFFICE
400 St. Martin West Blvd., #200
Laval, QC H7M 3Y8

SECURITY COMMUNICATION SOLUTIONS
aiphone.com

Customer Service & Technical Support (800) 692-0200

LEM-1DL Series Brochure | 10/2021

© 2021. All Rights Reserved.
The information in this brochure is subject to change without notice.