

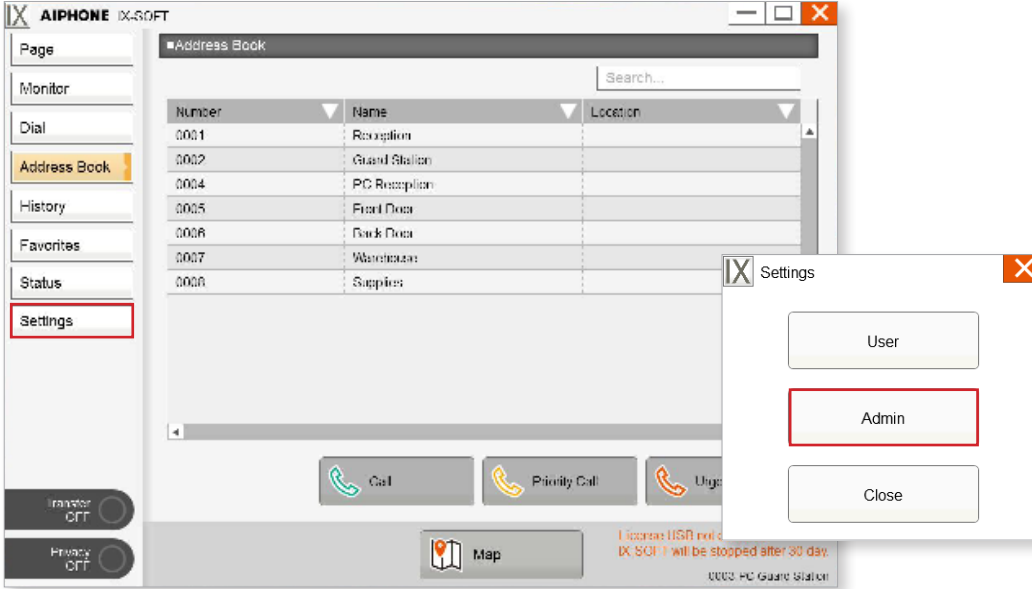
IX-SOFT Map Setting Guide

Getting Started

This guide covers the basic map settings for IX-SOFT and assumes all other programming is completed with basic call functionality. Refer to the IX Quick Start Guide for initial system programming.

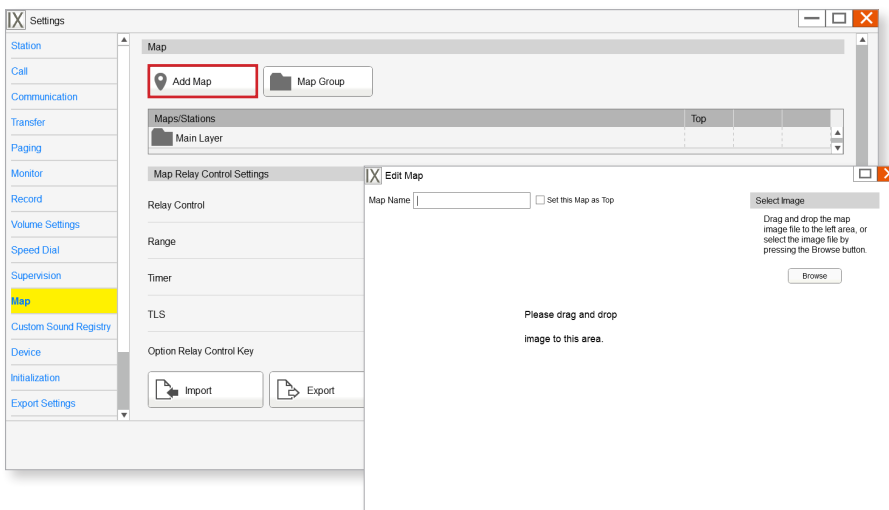
Admin Settings

On the side menu, click **Settings**. Select **Admin** and enter the Admin ID and Password set in the Support Tool. Click **OK**.



Adding a Map

Select **Map** from the side menu, and click **Add Map**. Drag and drop the map image file into the new window or browse to the location of the file using **Browse**.



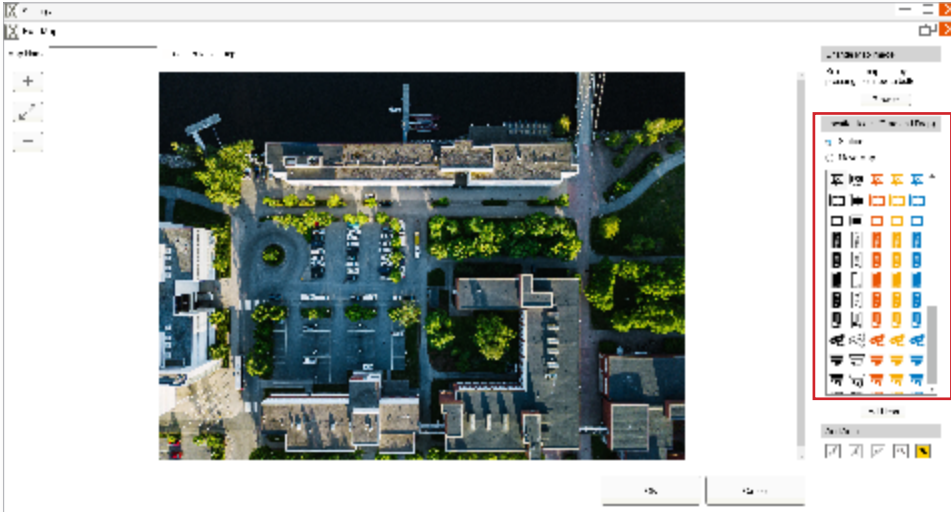
Map Image Supported Files

File format: BMP, PNG, GIF, JPEG, TIFF

Resolution: 3000 (W) × 2000 (H) or less

Map Configuration

Drag and drop the location icons to add IX Series stations to the map. Once an icon has been dropped onto the map, assign a station to the corresponding icon and click **OK**. Once the map has been customized, enter a **Map Name** and click **OK** to save changes.



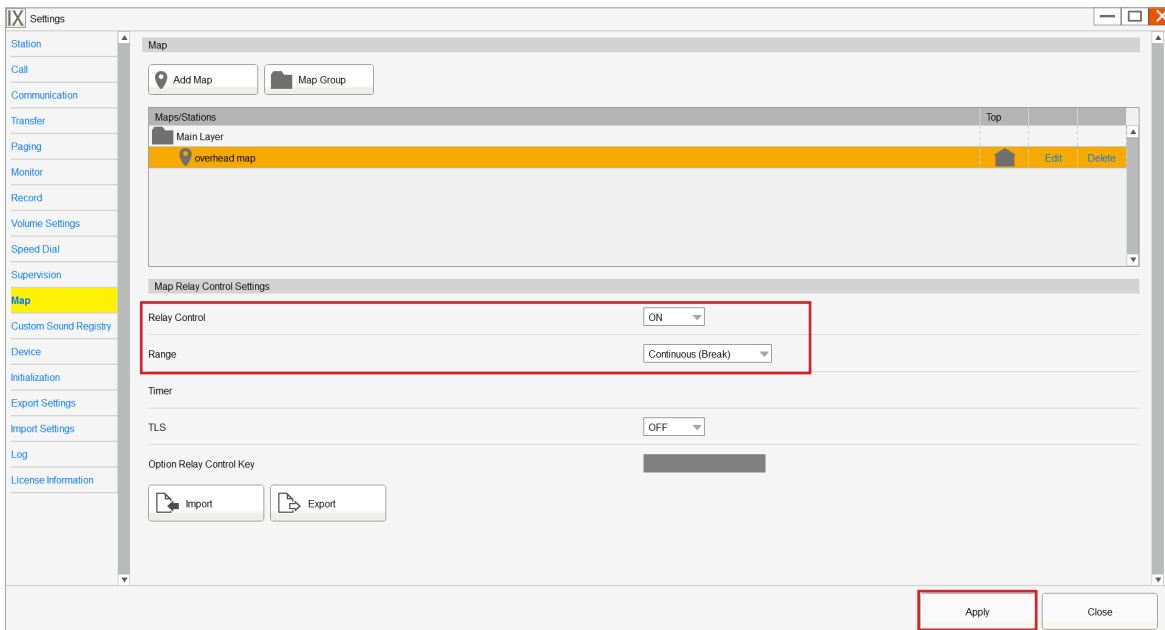
Custom Icon Supported Files

File format: BMP, PNG, GIF, JPEG, TIFF

Resolution: 700 (W) × 700 (H) or less

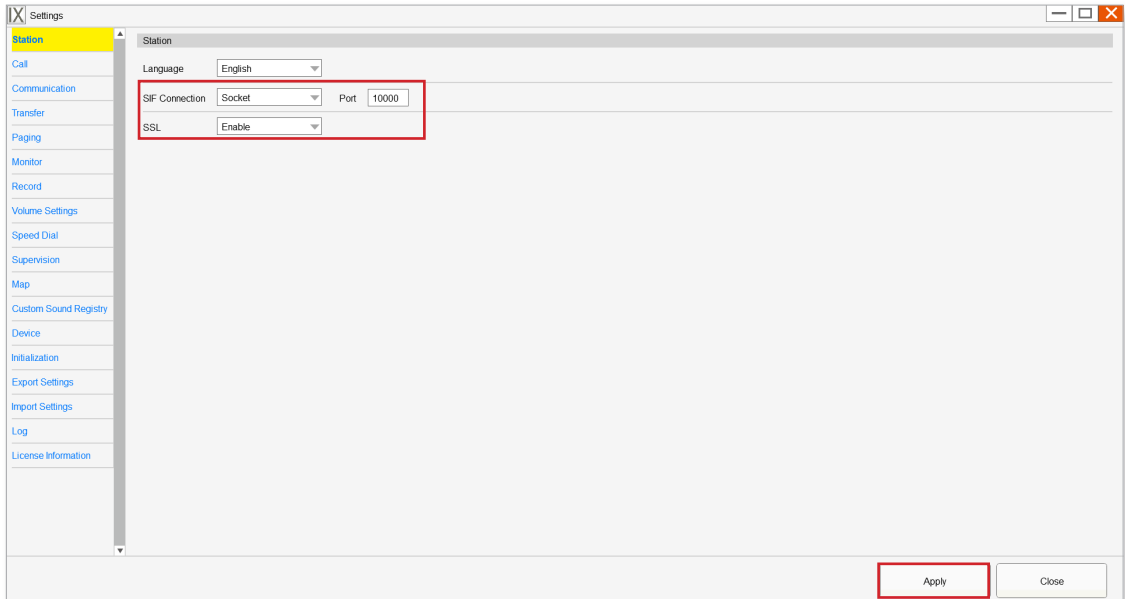
Map Relay Control

To enable the ability to trigger the relay output on a station using the map feature of IX-SOFT, the **Relay Control** drop-down must be set to **ON**. Use the drop-down and select **ON**. Click **Apply** to save changes.



Enabling SIF

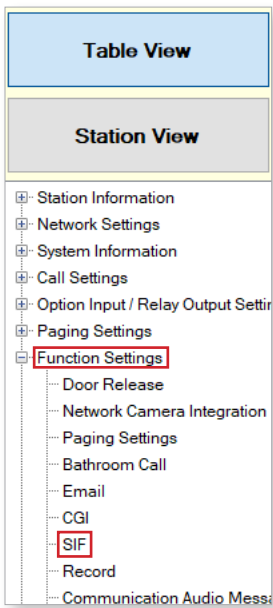
To view real time events on the map, SIF must be enabled for IX-SOFT, as well as the stations communicating with it. Select **Station** from the side menu and use the **SIF Connection** drop-down to select **Socket**. Click **Apply** to save changes.



Enabling SIF (for IX Series Stations)

The SIF settings will also need to be enabled for each station communicating with IX-SOFT. To do this, open IX Support Tool and select the system associated with IX-SOFT. On the left side menu, expand **Function Settings** and select **SIF**. This screen will allow each station's SIF settings to be enabled. Enable **SIF Functionality** and fill out the **Program Type**, **IPv4 Address** of IX-SOFT, **Destination Port**, **SSL**, and **Connection**. For multiple instances of IX-SOFT, use the display-drop down at the top of the screen and select the next available number.

Station Information				Function Settings									
#	Identification			SIF									
	Number	Name	Location	Station Type	SIF Functionality	SIP URI Format	No.01						
							Program Type	IPv4	IPv6	Destination Port	SSL	Connection	
0001	0001	Reception		IX-MV7-*	Enable	Disable	1111	192.168.1.16			10000	Enable	Socket
0002	0002	Guard Station		IX-MV7-*	Enable	Disable	1111	192.168.1.16			10000	Enable	Socket
0003	0004	PC Reception		IX-SOFT	Enable	Disable	1111	192.168.1.16			10000	Enable	Socket
0004	0005	Front Door		IX-DV, IX-DVF(-*)	Enable	Disable	1111	192.168.1.16			10000	Enable	Socket
0005	0006	Back Door		IX-DV, IX-DVF(-*)	Enable	Disable	1111	192.168.1.16			10000	Enable	Socket
0006	0007	Warehouse		IX-SSA(-*)	Enable	Disable	1111	192.168.1.16			10000	Enable	Socket
0007	0008	Supplies		IX-RS-*	Enable	Disable	1111	192.168.1.16			10000	Enable	Socket



Each station will also need a number of transmission triggers enabled.

Triggers to be enabled: "Begin Outgoing Call," "Begin Communication (Source)," "Change Contact," "Begin Transfer," "End Transfer," "Begin Incoming Call," "End Incoming Call."

Program Type
Set a four digit number for Program Type with the exception of "0000," "0001," "0011."

SSL
Either enable or disable SSL. Setting must match IX-SOFT SSL setting.

Click **Update** to save the changes.

Setting File Upload

From the top menu bar, click **File(F)** and select **Upload Settings to Station**.

Setting File Upload

Select the station(s) to upload the Setting File(s):

Station List					
Select	Number	Name	Location	Station Type	Status
<input checked="" type="checkbox"/>	0001	Reception		IX-MV7-*	-
<input checked="" type="checkbox"/>	0002	Guard Station		IX-MV7-*	-
<input checked="" type="checkbox"/>	0004	PC Reception		IX-SOFT	-
<input checked="" type="checkbox"/>	0005	Front Door		IX-DV, IX-DVF(-*)	-
<input checked="" type="checkbox"/>	0006	Back Door		IX-DV, IX-DVF(-*)	-
<input checked="" type="checkbox"/>	0007	Warehouse		IX-SSA(-*)	-
<input checked="" type="checkbox"/>	0008	Supplies		IX-RS-*	-

Select Station by Type:

All ▾

Select

Unselect

Select file type to be uploaded

Settings

Sounds

Schedule

Select Stations
Use the drop-down menu under **Select Station by Type** and chose **All**, then click **Select** .

Settings
Click **Settings** to upload the configuration settings to each station.

Sounds
Click **Sounds** to upload the sound files to each station.

Schedule
Click **Schedule** to upload the created schedules to each station.

Setting File Export

From the top menu bar, click **File(F)** and select **IX Support Tool Export System Configuration**.

Export Settings

The system has been successfully configured.
Aiphone recommends to export and back up the system configuration files and leave them on-site with the end user.
This backup can be imported into the IX Support Tool and used to modify the system.

Export

Finish

Export
Click **Export** to select a location to save the system's setting file.

Select Folder
Select location to save the file then click **OK**.

Finish
Once the setting file has been saved, click **Finish**.